

# FOR WAYLAND ARMS SLAB REPAIR & SEISMIC UPGRADE RFQ

<b>Project Name:</b>	Wayland Arms Apartments - Settlement Monitoring	<b>Report:</b> 001	
<b>GeoDesign # :</b>	KCHA-13-04	<b>Date:</b> 01/09/2024	
<b>Reports with Unresolved Nonconformance Issues:</b>		<b>Permit:</b>	
<b>Distribution:</b>	Heath MacCoy <HeathM@kcha.org>		
	<b>Weather:</b>	<b>Arrival/Departure:</b>	<b>Prepared By:</b> <i>Ken J. Lamb</i>
<b>Attachments:</b>	<input checked="" type="checkbox"/> Site Plan(s)	<input type="checkbox"/> Density Test Summary	<b>Signature:</b>
	<input type="checkbox"/> Installation Records	<input type="checkbox"/> Other	<b>Reviewed By:</b> <i>Ken J. Lamb</i>

## SUMMARY OF CRACK MONITORING GAGE INSTALLATION:

### ***Dec 7, 2023***

Installed 5 crack monitoring gages at Wayland Arms Apartments in Auburn at the following locations and as shown on Figure 1.

MP-1 - Suite 100 central wall opposite interior hallway between floor and wall stud. Wall studs are hanging from 2nd floor joist and there is an existing gap between the floor slab and base plate.

MP-2 - Mechanical room central wall opposite interior hallway, between floor and cinder block wall.

MP-3 - Mechanical Room north wall behind fire water pipes between floor slab and cinder block wall.

MP-4 - Mechanical Room south wall west of boiler behind 6-inch metal ducting pipe, between floor slab and wall.

MP-5 - Water Tank room, west side of building just north of mechanical room accessed through exterior doors.

### ***Jan 23, 2024***

Returned to site to check gages and remove alignment pins. Images of gages recorded and provided on Figures 2 through 6.

### ***Recommendation***

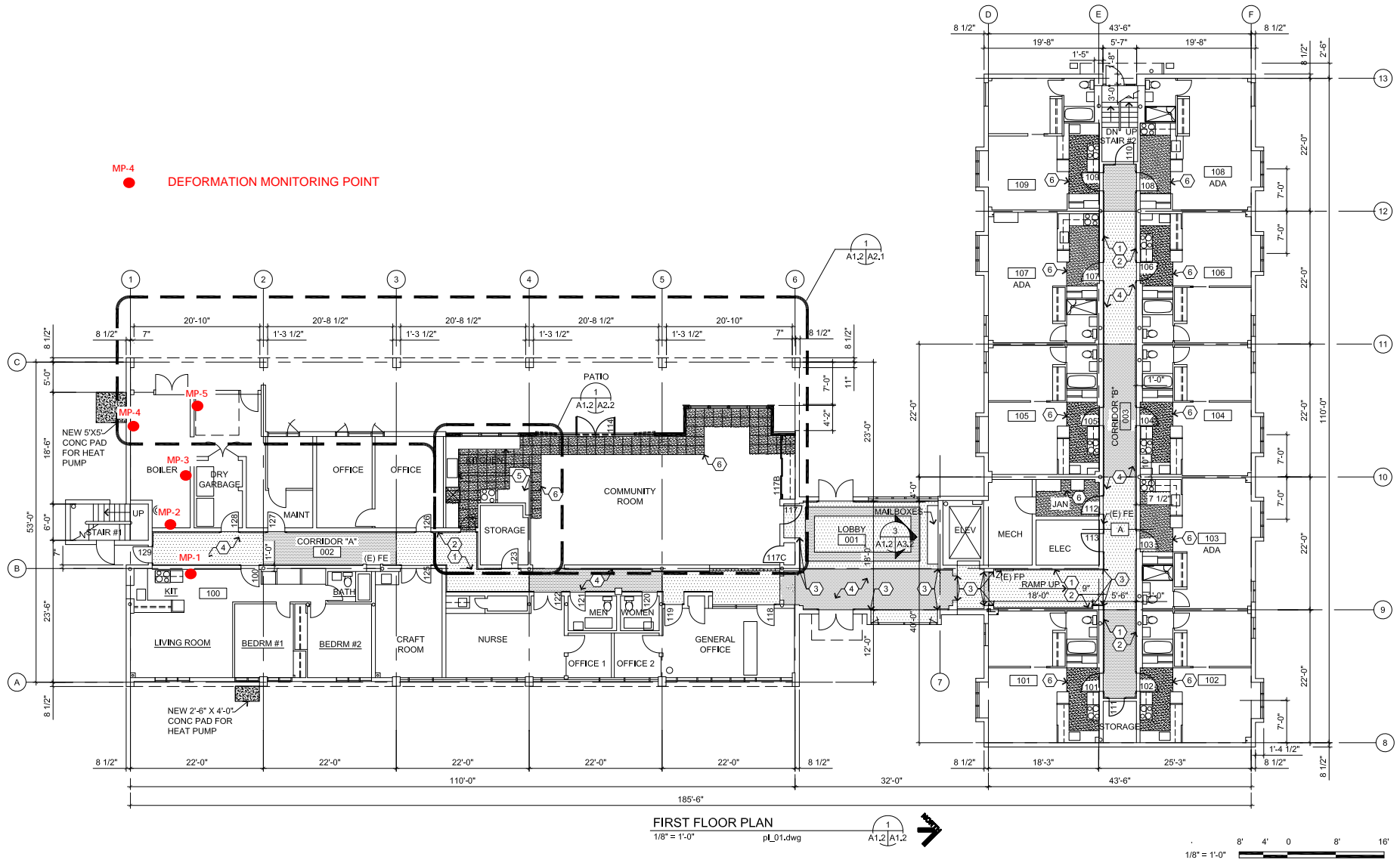
We recommend reading them on a 3-month interval for first year and revise monitoring interval based on past readings.

This report presents opinions formed as a result of our observation of activities relating to geotechnical engineering or environmental services. We rely on the contractor to comply with the plans and specifications throughout the duration of the project irrespective of the presence of our representative. Our work does not include supervision or direction of the contractor, the contractor's employees or agents. Our firm is not responsible for site safety. This field report is a DRAFT representation of our field observations, testing, and preliminary recommendations. The report can only be considered final upon review of the GeoDesign project manager, as indicated by initials in the "Reviewed By" section.

22122 20th Avenue SE, suite H-159 | Bothell, WA 98021 | 206.858.9900

2502 Jefferson Avenue | Tacoma, WA 98402 | 253.203.0095

# FOR WAYLAND ARMS SLAB REPAIR & SEISMIC UPGRADE RFQ



N|V|5

KCHA-13-04

JANUARY 2024

MONITORING POINT LOCATIONS

WAYLAND ARMS APARTMENTS  
AUBURN, WA

FIGURE 1

FOR WAYLAND ARMS SLAB REPAIR & SEISMIC UPGRADE RFQ



KCHA-13-04

MONITORING POINT LOCATION - MP1

JANUARY 2024

WAYLAND ARMS APARTMENTS  
AUBURN, WA

FIGURE 2



FOR WAYLAND ARMS SLAB REPAIR & SEISMIC UPGRADE RFQ



N|V|5

KCHA-13-04

JANUARY 2024

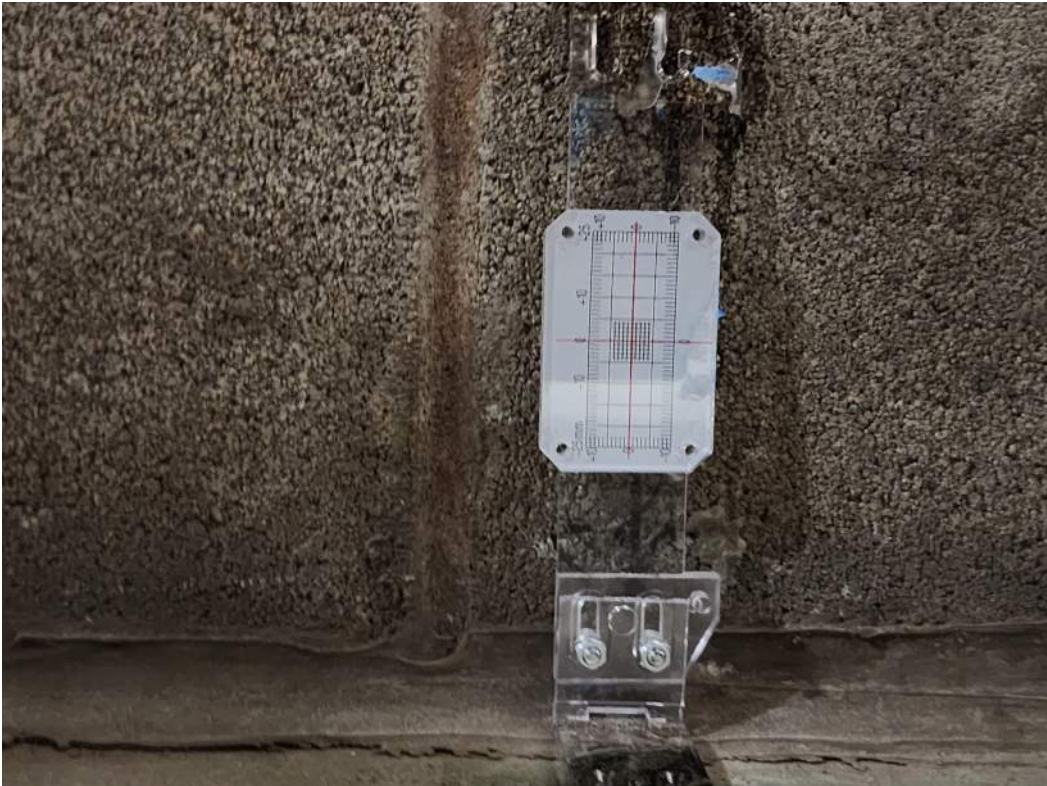
MONITORING POINT LOCATION - MP2


WAYLAND ARMS APARTMENTS  
AUBURN, WA

FIGURE 3



FOR WAYLAND ARMS SLAB REPAIR & SEISMIC UPGRADE RFQ



	KCHA-13-04	MONITORING POINT LOCATION - MP3	
	JANUARY 2024	WAYLAND ARMS APARTMENTS AUBURN, WA	FIGURE 4



FOR WAYLAND ARMS SLAB REPAIR & SEISMIC UPGRADE RFQ



N|V|5

KCHA-13-04

JANUARY 2024

MONITORING POINT LOCATION - MP4

WAYLAND ARMS APARTMENTS  
AUBURN, WA

FIGURE 5

FOR WAYLAND ARMS SLAB REPAIR & SEISMIC UPGRADE RFQ



N|V|5

KCHA-13-04

MONITORING POINT LOCATION - MP5

JANUARY 2024

WAYLAND ARMS APARTMENTS  
AUBURN, WA

FIGURE 6