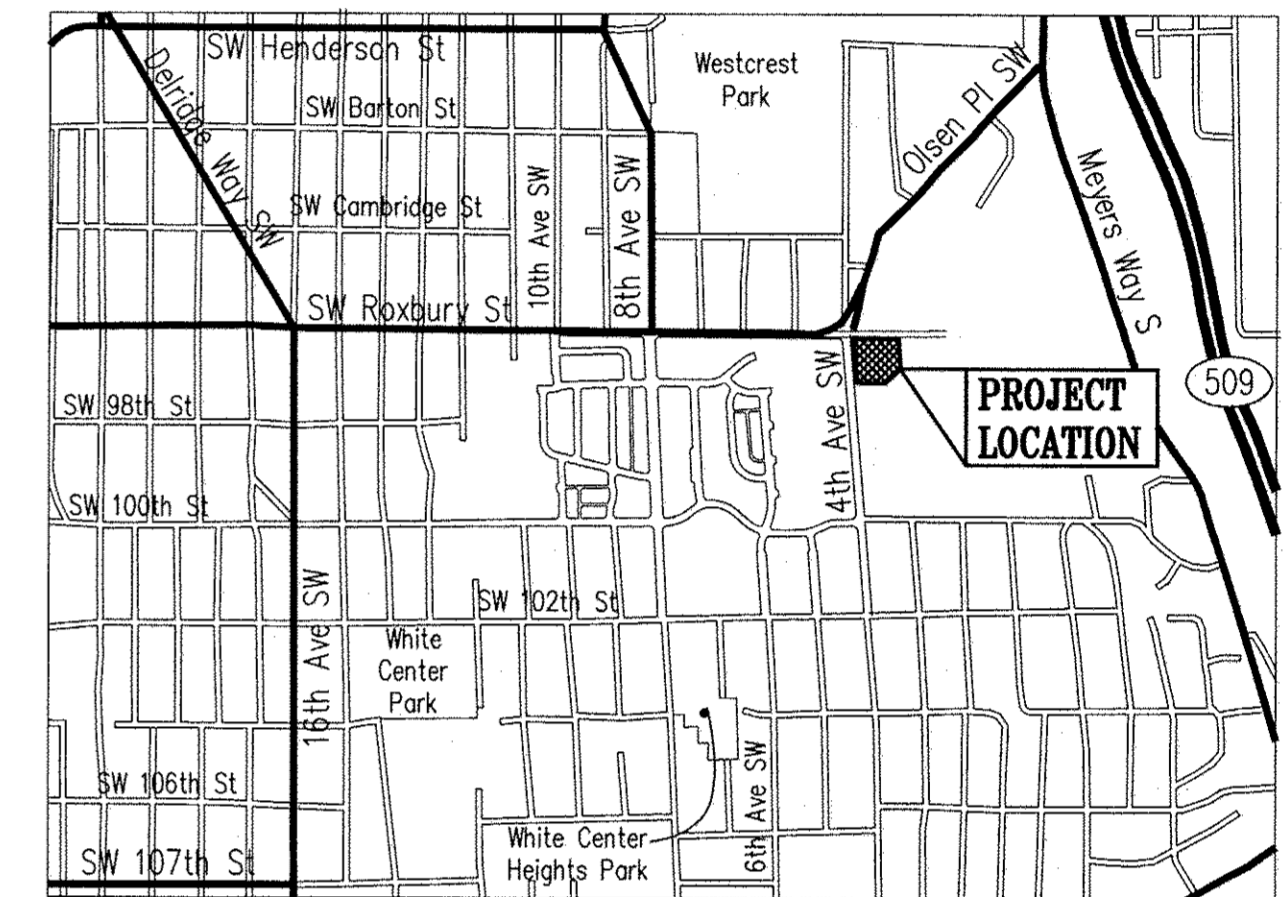


WIND ROSE INFRASTRUCTURE SANITARY SEWER IMPROVEMENT PLANS

SEC. 6, T.23 N., R.4E., W.M.
King County, Washington
JANUARY 2017
PERMIT SUBMITTAL



VICINITY MAP
N.T.S. 

Contract No.

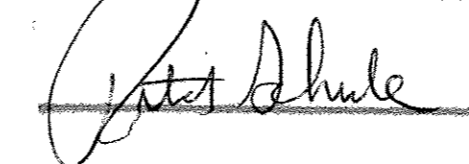
PROJECT DEVELOPER

KING COUNTY HOUSING AUTHORITY
600 ANDOVER PARK WEST
SEATTLE, WA. 98188-3326
TELEPHONE: (206) 574-1196
CONTACT PERSON : JOHN ELIASON

PROJECT ENGINEER

KPFF CONSULTING ENGINEERS
1601 FIFTH AVENUE, SUITE 1600
SEATTLE, WASHINGTON 98101
TELEPHONE: (206) 622-5822

SOUTHWEST SUBURBAN SEWER DISTRICT
APPROVED FOR CONSTRUCTION



kpff

1601 5th Avenue, Suite 1600
Seattle, WA 98101
206.622.5822
www.kpff.com



GENERAL NOTES

- A COPY OF THE APPROVED PLAN SHALL BE ON SITE WHENEVER CONSTRUCTION IS IN PROGRESS.
- THE CONTRACTOR SHALL OBTAIN ALL PERMITS REQUIRED FOR WORK WITHIN THE PUBLIC RIGHT OF WAY.
- PRIOR TO ANY CONSTRUCTION ACTIVITY, THE CONTRACTOR SHALL SCHEDULE AND ATTEND A PRE-CONSTRUCTION CONFERENCE WITH SOUTHWEST SUBURBAN SEWER DISTRICT. THE CONTRACTOR SHALL NOTIFY THE OWNER'S PROFESSIONAL ENGINEERING CONSULTANT OF THE PRECONSTRUCTION MEETING TIME AND LOCATION.
- VERTICAL DATUM:**
VERTICAL DATUM: NAVD 88

BENCHMARK "B": SOUTHERLY TOP FLANGE BOLT BETWEEN THE LETTERS "E" AND "L" IN THE WORD MULLER ON FIRE HYDRANT AT SOUTHWEST CORNER OF 8TH AVENUE SW AND SW 102ND STREET. ELEVATION = 407.61 FEET.

BENCHMARK "C": CHISELED SQUARE AT INTERSECTION OF BACK OF CONCRETE WALKS AND BACK OF CURBS AT THE NORTHEAST CORNER OF 4TH AVENUE SW AND SW 102ND STREET. ELEVATION = 423.37 FEET.
- ALL LOCATIONS OF EXISTING UTILITIES SHOWN HEREON HAVE BEEN ESTABLISHED BY FIELD SURVEY OR OBTAINED FROM AVAILABLE RECORDS AND SHOULD THEREFORE BE CONSIDERED APPROXIMATE ONLY AND NOT NECESSARILY COMPLETE. IT IS THE SOLE RESPONSIBILITY OF THE CONTRACTOR TO INDEPENDENTLY VERIFY THE ACCURACY OF ALL UTILITY LOCATIONS SHOWN AND TO FURTHER DISCOVER AND AVOID ANY OTHER UTILITIES NOT SHOWN HEREON WHICH MAY BE AFFECTED BY THE IMPLEMENTATION OF THIS PLAN.
- THE CONTRACTOR SHALL LOCATE AND PROTECT ALL CASTINGS AND UTILITIES DURING CONSTRUCTION AND SHALL CONTACT THE UNDERGROUND UTILITIES LOCATOR SERVICE (1-800-424-5555) AT LEAST 48 HOURS PRIOR TO CONSTRUCTION.
- THE CONTRACTOR SHALL ADJUST ALL EXISTING MANHOLE RIMS, DRAINAGE STRUCTURE LIDS, VALVE BOXES, AND UTILITY ACCESS STRUCTURES TO FINISH GRADE WITHIN AREAS AFFECTED BY THE PROPOSED IMPROVEMENTS.
- THE CONTRACTOR SHALL FIELD VERIFY THE HORIZONTAL AND VERTICAL POSITION OF ALL PROPOSED UTILITY POINTS OF CONNECTION, AND SHALL POTHOLE ALL CROSSINGS WITH EXISTING UTILITIES PRIOR TO THE START OF DEMOLITION AND INSTALLATION OF PROPOSED UTILITIES.

SWSSD GENERAL NOTES

- ALL CONSTRUCTION SHALL CONFORM TO THE REQUIREMENTS OF THE SOUTHWEST SUBURBAN SEWER DISTRICT WHICH ARE CONTAINED IN A BOUND VOLUME ENTITLED, "DEVELOPER PROJECT MANUAL".
- EXISTING UTILITY LOCATIONS SHOWN ARE APPROXIMATE ONLY, AND IT SHALL BE THE SOLE RESPONSIBILITY OF THE CONTRACTOR TO DETERMINE CORRECT UTILITY LOCATIONS AND TO PRESERVE AND PROTECT ALL EXISTING UTILITIES. FOR UTILITY LOCATIONS IN KING COUNTY, CALL 1-800-424-5555 AT LEAST 2 BUSINESS DAYS PRIOR TO CONSTRUCTION. SOUTHWEST SUBURBAN SEWER DISTRICT AND THE ENGINEER, SHALL BE CONTACTED IMMEDIATELY IF A CONFLICT EXISTS. ALL UTILITIES DISTURBED DURING CONSTRUCTION SHALL BE RESTORED TO A CONDITION THAT IS BETTER THAN THAT PRIOR TO THE START OF CONSTRUCTION.
- ALL SIDE SEWER STUBS SHALL BE 6-INCH DIAMETER PIPE CONSTRUCTED AT A MINIMUM SLOPE OF 2.00%, UNLESS OTHERWISE NOTED.
- ALL SIDE SEWER STUBS SHALL EXTEND A MINIMUM OF 5 FEET INSIDE THE PROPERTY LINE AND THE ENDS MARKED AS DESCRIBED IN SWSSD STANDARD DETAIL 10.
- 15-FOOT EASEMENTS: 7-1/2 FEET EACH SIDE OF SANITARY SEWER LINE AND/OR APPURTENANCES SHALL BE FURNISHED BY THE DEVELOPER WHEN THE SEWERS ARE LOCATED ON OTHER THAN PUBLIC RIGHT-OF-WAYS.
- PLAN AND PROFILE INFORMATION AS FURNISHED BY THE DEVELOPER OR HIS ENGINEER.
- MINIMUM SEPARATION OF POTABLE WATER MAINS AND SANITARY SEWER LINES SHALL BE IN ACCORDANCE WITH SECTION C1-9.1 OF THE "CRITERIA FOR SEWAGE WORKS DESIGN" PUBLISHED BY THE WASHINGTON STATE DEPARTMENT OF ECOLOGY AS REVISED DECEMBER 1998.
- A PLUG SHALL BE PLACED IN THE OUTLET PIPE OF THE EXISTING MANHOLE WHICH IS TO BE CONNECTED TO OR THE OUTLET PIPE OF THE FIRST NEW MANHOLE CONSTRUCTED. A TIGHTLINE BYPASS MAY BE REQUIRED IN PLACE OF THE PLUG. THIS PLUG OR BYPASS SHALL REMAIN IN PLACE AND MAY NOT BE REMOVED WITHOUT THE PERMISSION OF THE SOUTHWEST SUBURBAN SEWER DISTRICT. REMOVAL WILL RESULT IN FORFEITURE OF SYSTEM ISOLATION DEPOSIT.
- ALL PIPES ENTERING/LEAVING MANHOLES SHALL BE ALIGNED WITH THE CENTER OF THE MANHOLE. MANHOLE CHANNELS SHALL BE SHAPED TO ALLOW PLACEMENT AND USE OF THE DISTRICT'S TELEVISION INSPECTION EQUIPMENT. ALL CHANNELS SHALL BE CONSTRUCTED TO THE DEPTH AND DIAMETER OF THE SEWER PIPES.
- FOR CONNECTIONS INTO EXISTING MANHOLES, WALL AND SHELF MUST BE CORE DRILLED..
- THE DEVELOPER SHALL BE RESPONSIBLE FOR ACQUIRING ALL NECESSARY EASEMENTS AND AGREEMENTS PRIOR TO CONSTRUCTION. THE DEVELOPER SHALL BE RESPONSIBLE FOR ACQUIRING ALL EASEMENT RELEASES UPON COMPLETION OF CONSTRUCTION AND PRIOR TO FINAL PROJECT ACCEPTANCE.
- ALL WORK WITHIN THE CITY OR COUNTY RIGHT-OF-WAY SHALL CONFORM WITH ALL APPLICABLE REQUIREMENTS AS SET FORTH BY THE ASSOCIATED AGENCY. EXISTING ASPHALT SHALL BE NEAT LINE CUT PRIOR TO EXCAVATION. ALSO SEE THE RIGHT-OF-WAY CONSTRUCTION PERMIT OBTAINED FOR THIS PROJECT.
- ALL SEWER PIPE INSTALLED SHALL BE TESTED FOR LEAKAGE PER SOUTHWEST SUBURBAN SEWER DISTRICT STANDARDS.
- A PRE-CONSTRUCTION CONFERENCE SHALL BE HELD PRIOR TO THE START OF CONSTRUCTION AND SHALL BE ATTENDED BY THE CONTRACTOR, SWSSD REPRESENTATIVES, AND OTHER INTERESTED AGENCIES.
- AT THE DEVELOPER'S EXPENSE THE DISTRICT SHALL PERFORM VIDEO INSPECTION OF ALL SANITARY SEWER MAINS PRIOR TO FINAL ACCEPTANCE. THE CONTRACTOR SHALL CORRECT ALL DEFICIENCIES FOUND DURING THE INSPECTION.
- ANY CHANGES TO THIS DESIGN SHALL BE APPROVED BY SOUTHWEST SUBURBAN SEWER DISTRICT AND THE ENGINEER PRIOR TO INSTALLATION.
- ALL NEW MANHOLES SHALL HAVE ALL JOINTS ENCAPSULATED USING 12 INCH WIDE STRIP OF BEST SEAL WRAP SEALANT.

LEGEND AND ABBREVIATIONS

	DETAIL REFERENCE NUMBER/SECTION SHEET
	X-X
CL	CENTERLINE
CTR	CENTER
DIP	DUCTILE IRON PIPE
EL/ELEV	ELEVATION
G	GAS
EX, EXIST.	EXISTING
IE	INVERT ELEVATION
PL	PROPERTY LINE
P.O.C.	POINT OF CONNECTION
R/W	RIGHT OF WAY
SS	SANITARY SEWER
STD(S)	STANDARD(S)
SWSSD	SOUTHWEST SUBURBAN SEWER DISTRICT
W/	WITH
	FIRE HYDRANT
	GATE VALVE
	WATER METER
	PROPOSED SANITARY SYSTEM
	EXISTING SANITARY SYSTEM
	PROPOSED SANITARY SEWER MANHOLE
	EXISTING SANITARY SEWER MANHOLE
	FINISHED GRADE 10' CONTOUR
	FINISHED GRADE 2' CONTOUR
	EXISTING CONTOUR
	FRANCHISE UTILITIES
	PROJECT LIMITS

APPROVED FOR CONSTRUCTION
DATE

DRAWING INDEX	
SHEET	DRAWING TITLE
COVER	COVER SHEET
SS-1	SANITARY SEWER NOTES
SS-2	SW 97TH PLACE SANITARY SEWER PLAN AND PROFILE
SS-3	SW 97TH PLACE SANITARY SEWER PLAN AND PROFILE
SS-4	SANITARY SEWER PLAN AND PROFILES
SS-5	SANITARY SEWER PLAN
SS-6	SANITARY SEWER DETAILS
SS-7	SANITARY SEWER DETAILS
SS-8	SANITARY SEWER DETAILS

Z:\14400-114400\114137 (Wind Rose KCH)\Design\SWSSD\SS 01 WF SS-01 NOTES.dwg

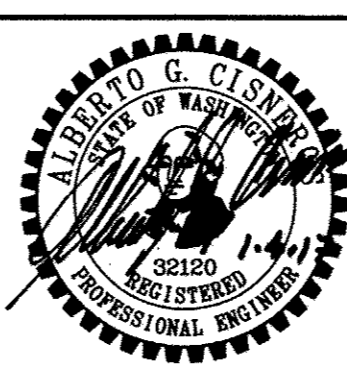
Jan 04, 2017 - 3:09pm kch

NO.	DATE	BY	CHD.	APPR.	REVISION

DRAWN BY TAD	DESIGNED BY BJB
CHECKED BY BJB	APPROVED BY AGC
DATE JANUARY 04, 2017	
JOB No. : 114137.10	



1601 5th Avenue, Suite 1600
Seattle, WA 98101
206.622.5822
www.kpff.com



KING COUNTY HOUSING AUTHORITY
WHITE CENTER, WASHINGTON

WIND ROSE

SANITARY SEWER NOTES

SHEET
SS-1

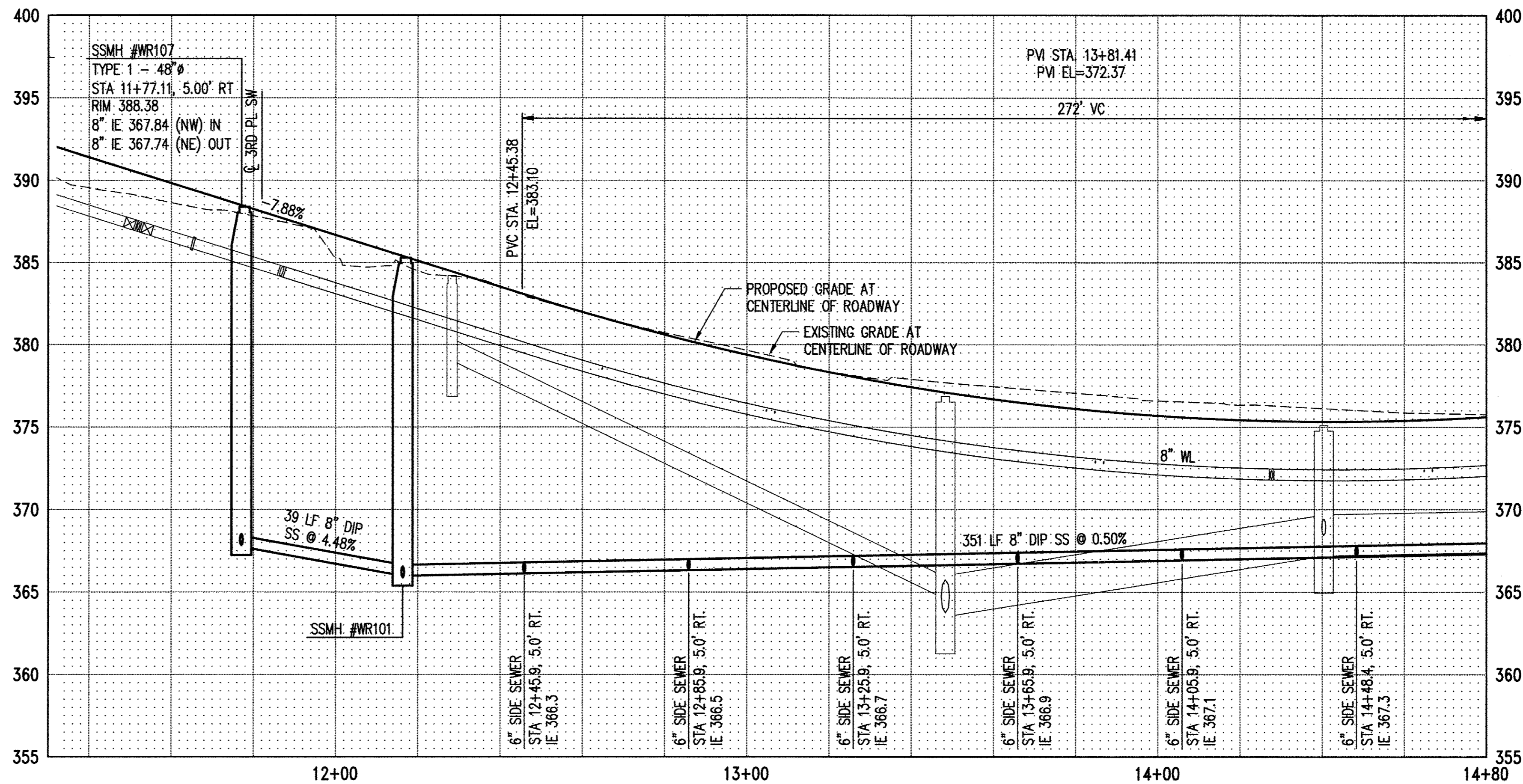
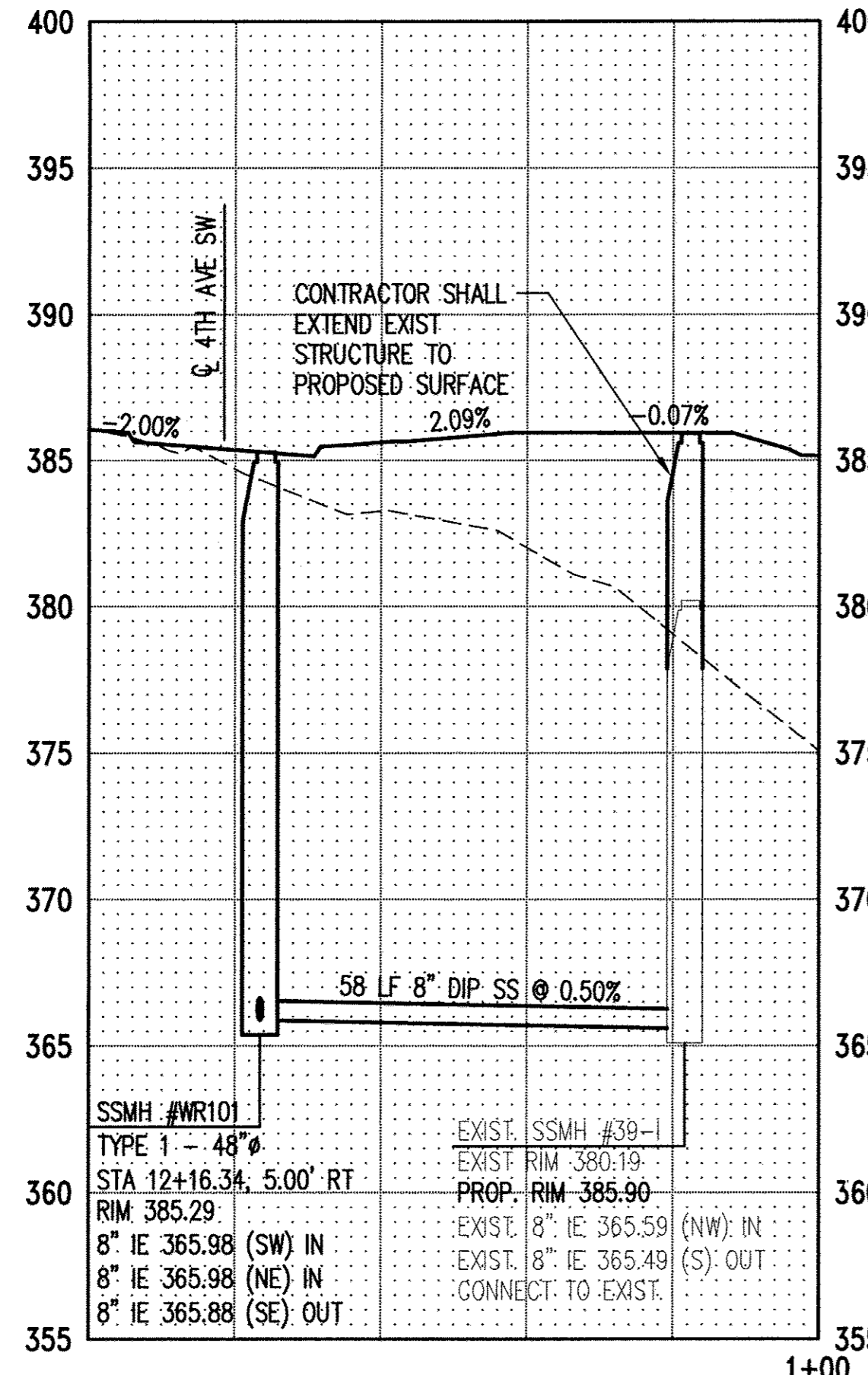
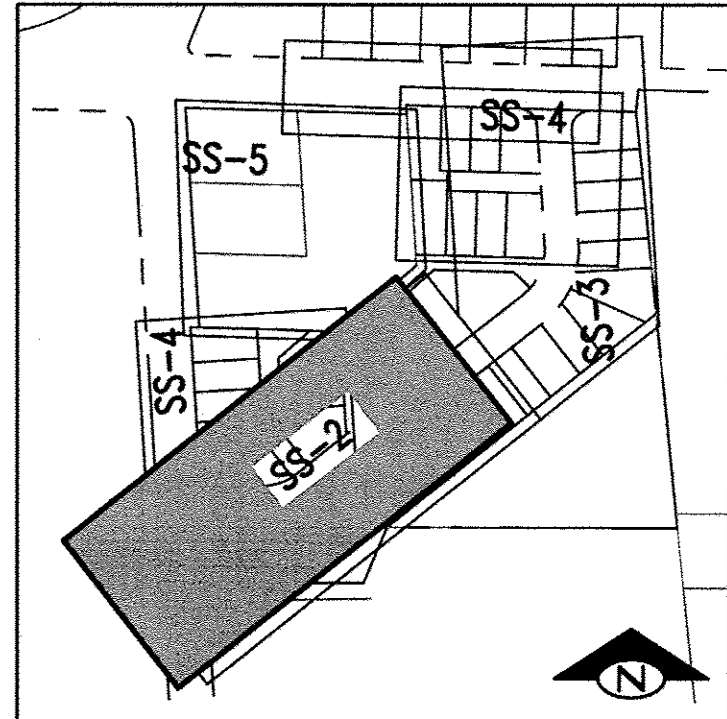
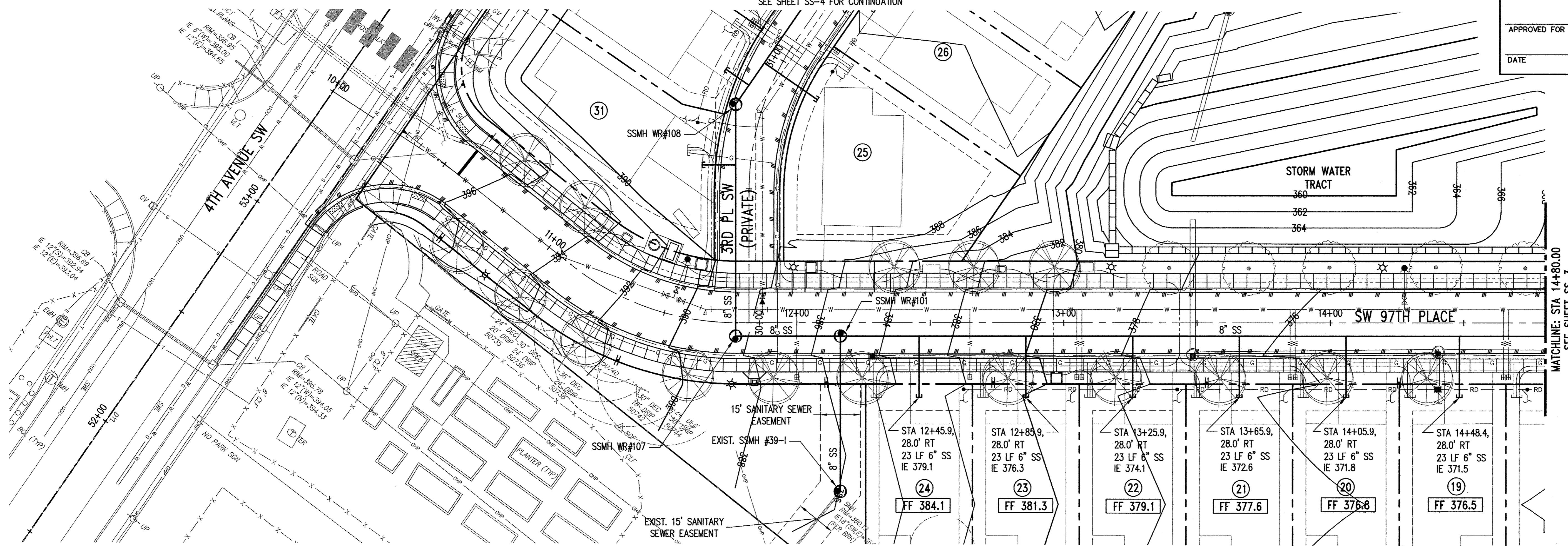
SEC. 6, T.23 N., R.4E., W.M.

SEE SHEET SS-4 FOR CONTINUATION

SOUTHWEST SUBURBAN SEWER DISTRICT

APPROVED FOR CONSTRUCTION

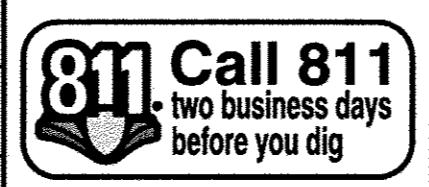
DATE



Z:\114000-114400\114137 (Wind Rose KCPH)\CAD\Design\SPSS\SS 02 WF SS-02.dwg

Jan 04, 2017 - 3:12pm

DRAWN BY TAD
DESIGNED BY BJB
CHECKED BY BJB
APPROVED BY AGC
DATE JANUARY 04, 2017
JOB No.: 114137.10



1601 5th Avenue, Suite 1600
Seattle, WA 98101
206.622.5822
www.kpff.com

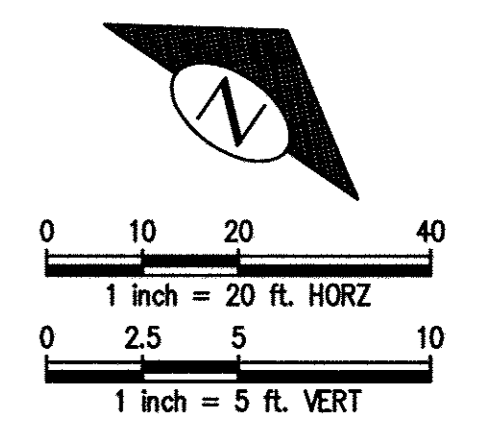


KING COUNTY HOUSING AUTHORITY
WHITE CENTER, WASHINGTON
WIND ROSE
SW 97TH PLACE SANITARY SEWER PLAN AND PROFILE

SHEET

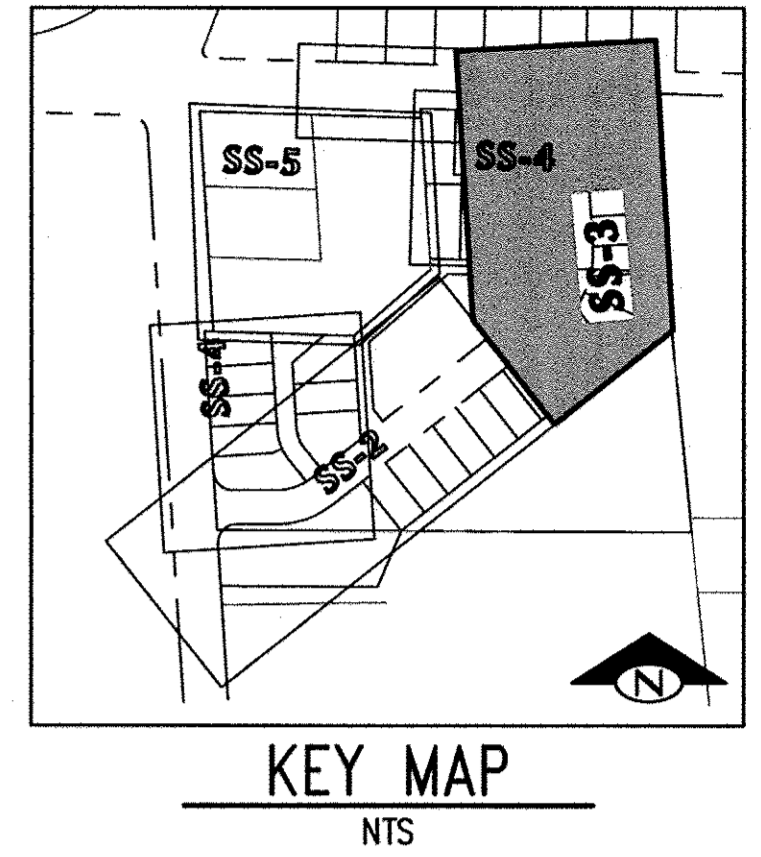
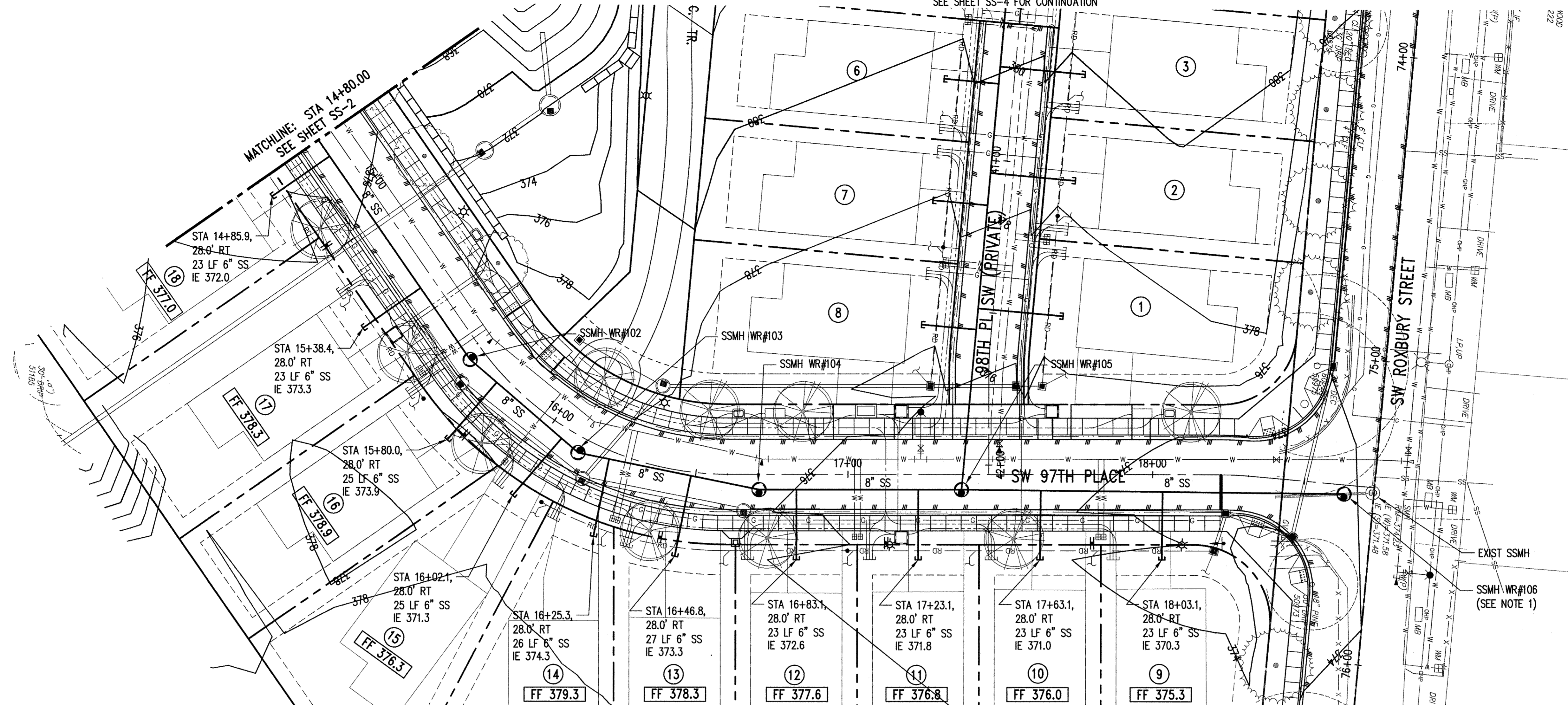
SS-2

NO.	DATE	BY	CHD.	APPR.	REVISION



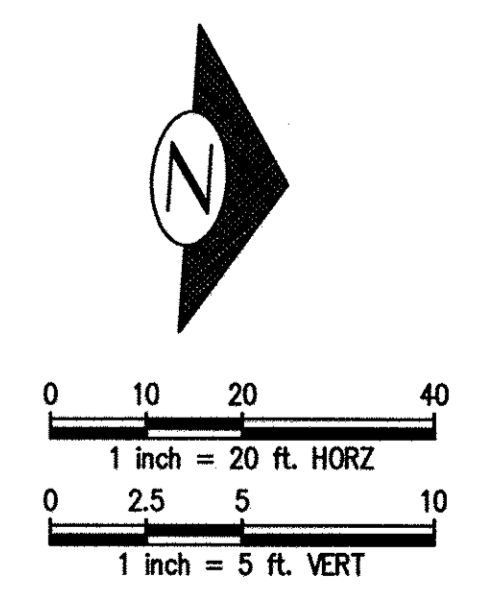
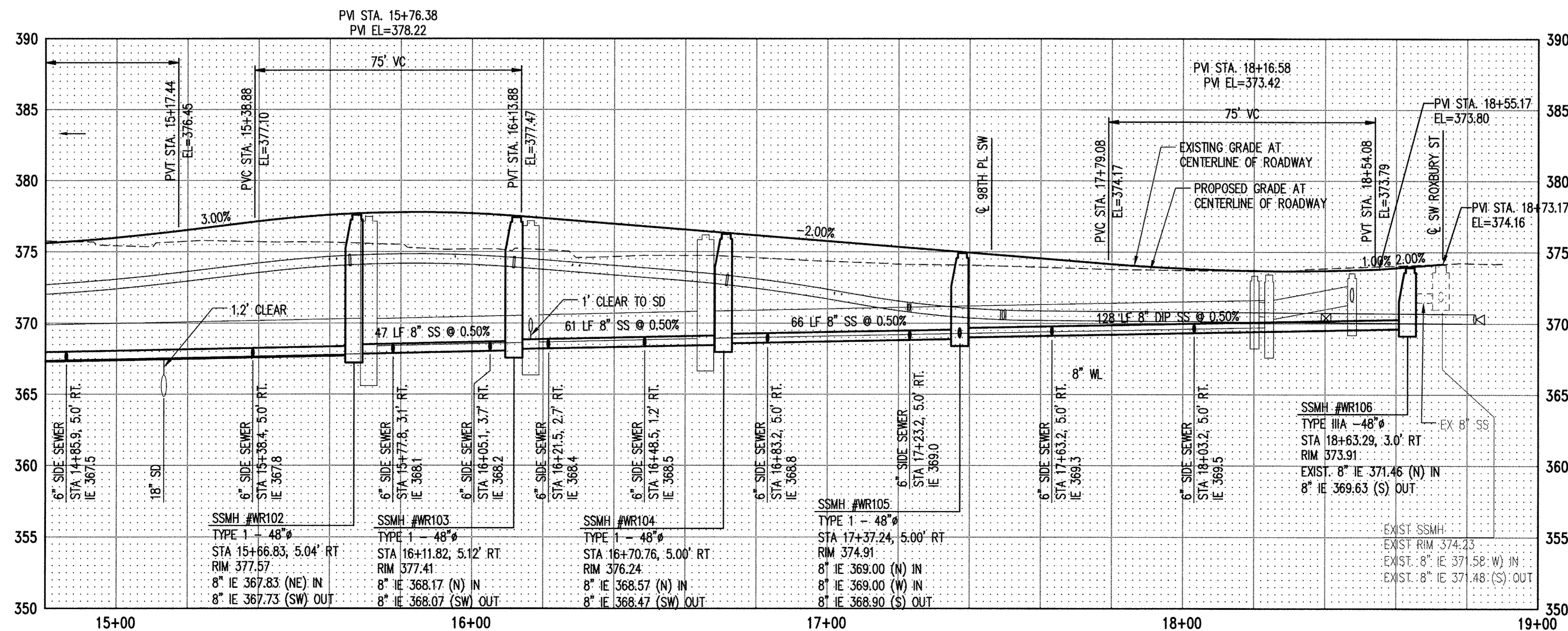
APPROVED FOR CONSTRUCTION

DATE



NOTES

- SSMH #WR106 CONNECTS TO AN EXISTING LIVE SEWER MAIN. CONTRACTOR SHALL PREPARE AND EXECUTE AN INTERIM PLAN TO MAINTAIN SERVICE AT ALL TIMES.



Z:\14400-114400\14137 (Wind Rose K04)\DWG\SS03\SS 02 WR SS-02.dwg
Kerab
Jan 04, 2017 - 3:12pm

NO.	DATE	BY	CHD.	APPR.	REVISION

DRAWN BY TAD
DESIGNED BY BJB
CHECKED BY BJB
APPROVED BY AGC
DATE JANUARY 04, 2017
JOB No. : 114137.10

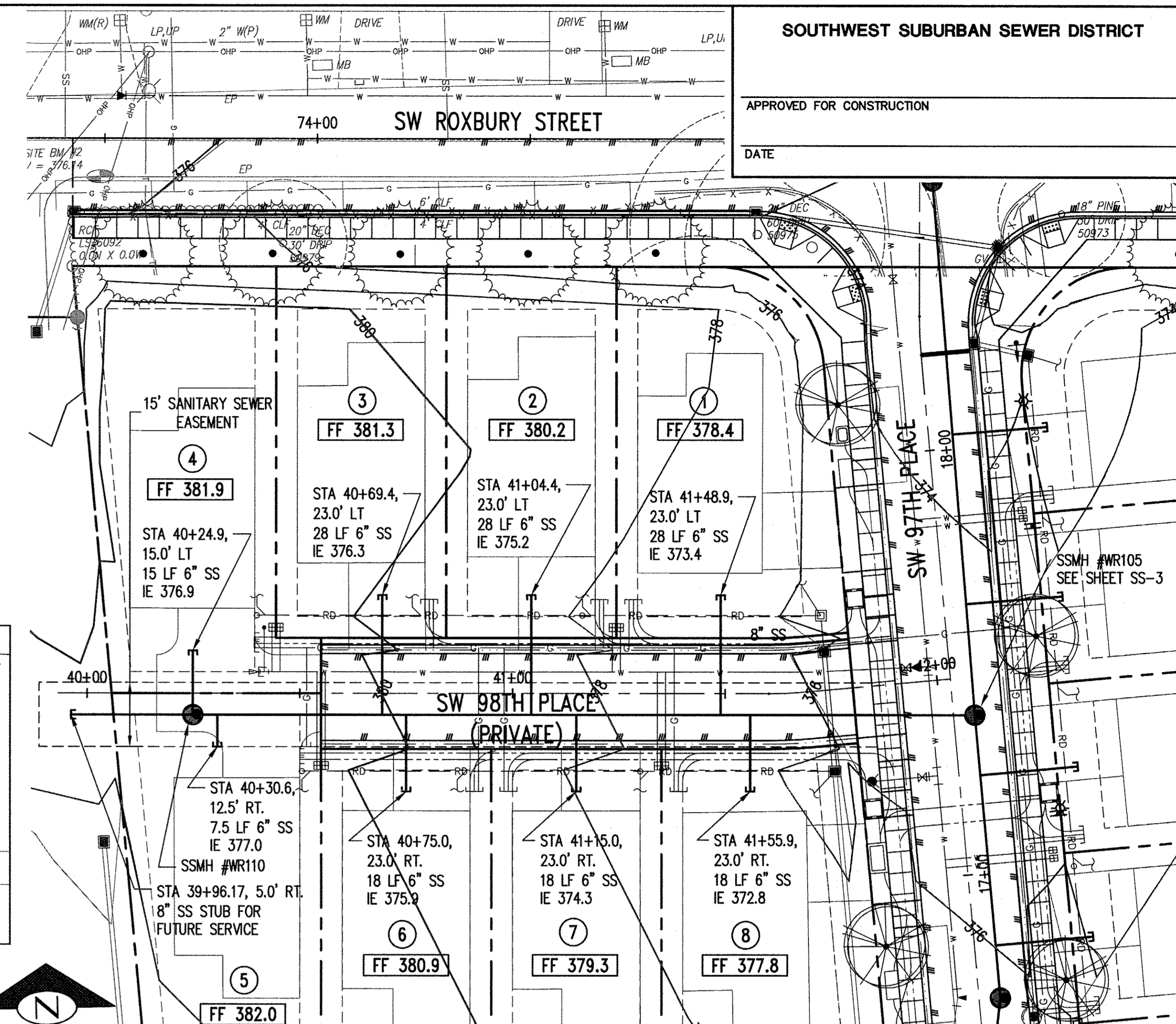
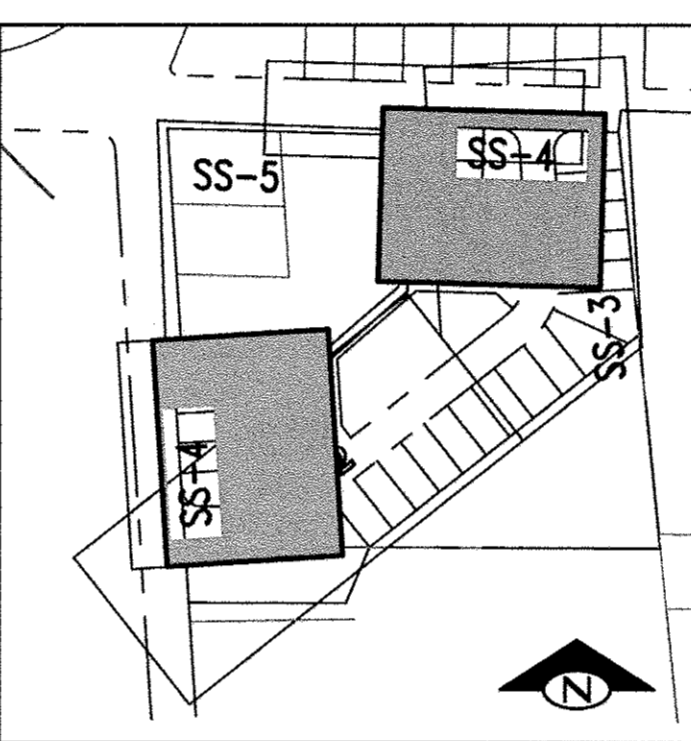
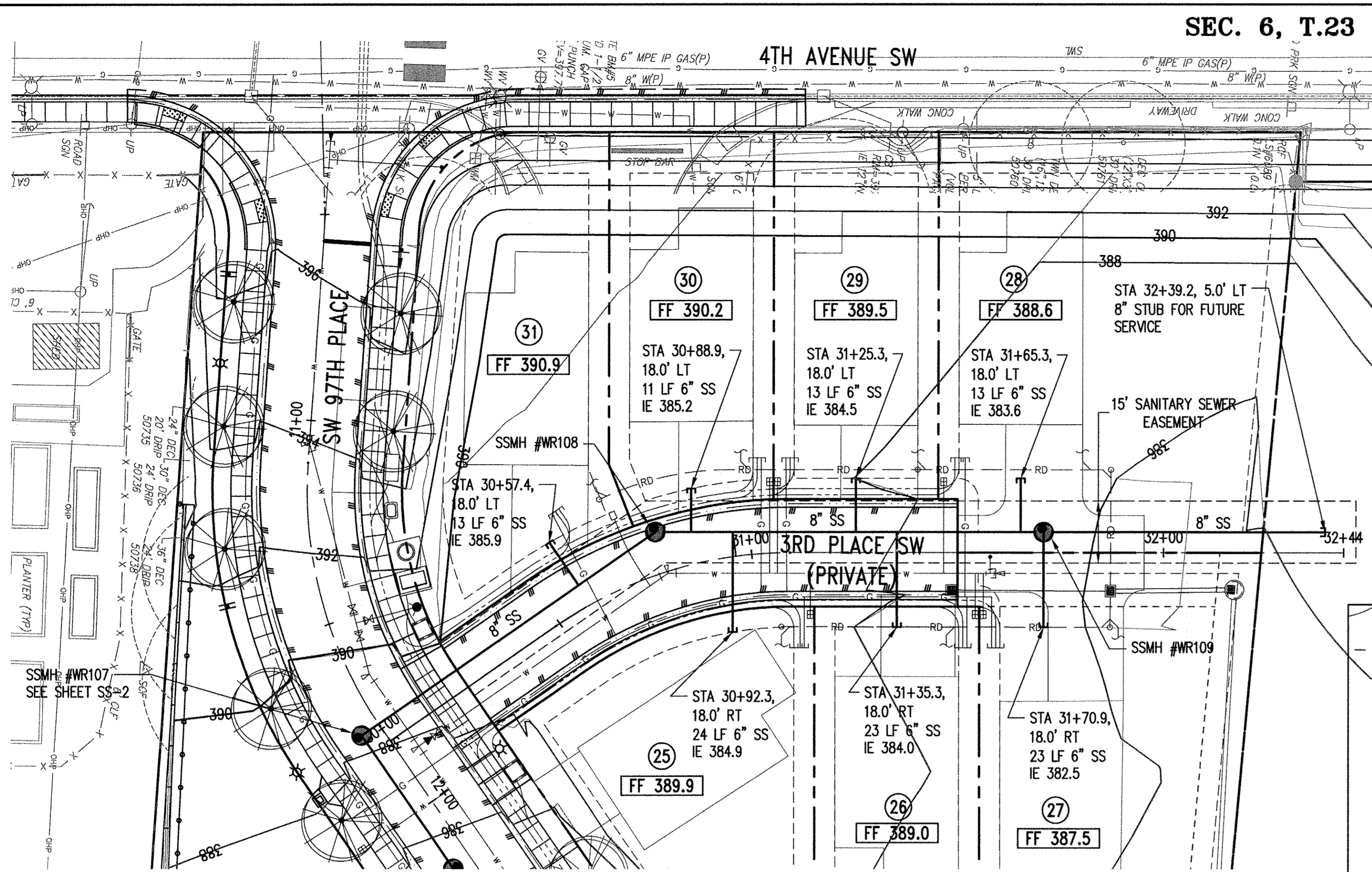


1601 5th Avenue, Suite 1600
Seattle, WA 98101
206.622.5822
www.kpff.com



KING COUNTY HOUSING AUTHORITY
WHITE CENTER, WASHINGTON
WIND ROSE
SW 97TH PLACE SANITARY SEWER PLAN AND PROFILE

SHEET
SS-3



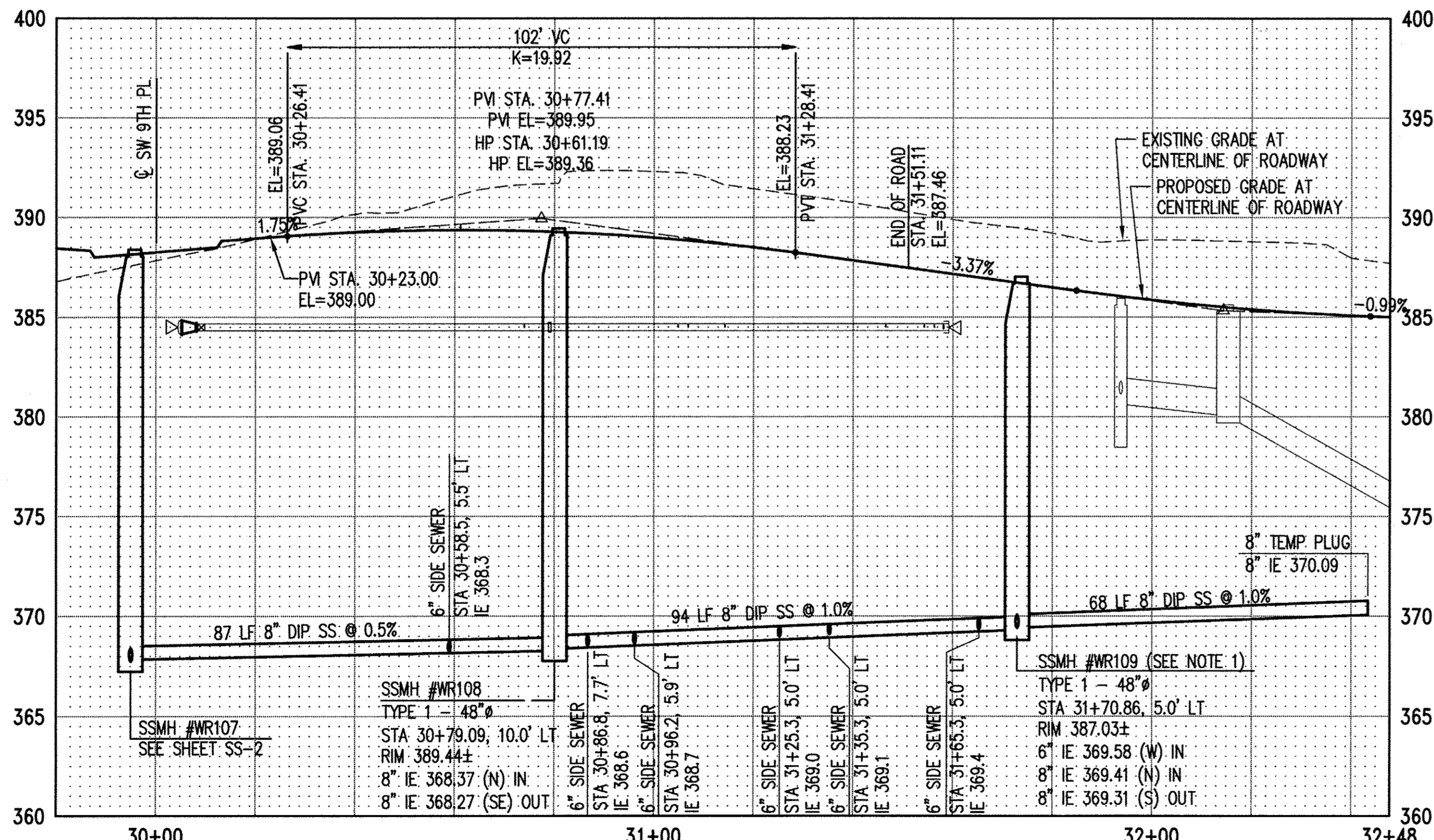
- NOTES**
- CONTRACTOR SHALL ADJUST SSMH RIM TO FINAL GRADE ONCE SHARED DRIVE DESIGN COMPLETED.

SEE SHEET SS-2 FOR CONTINUATION

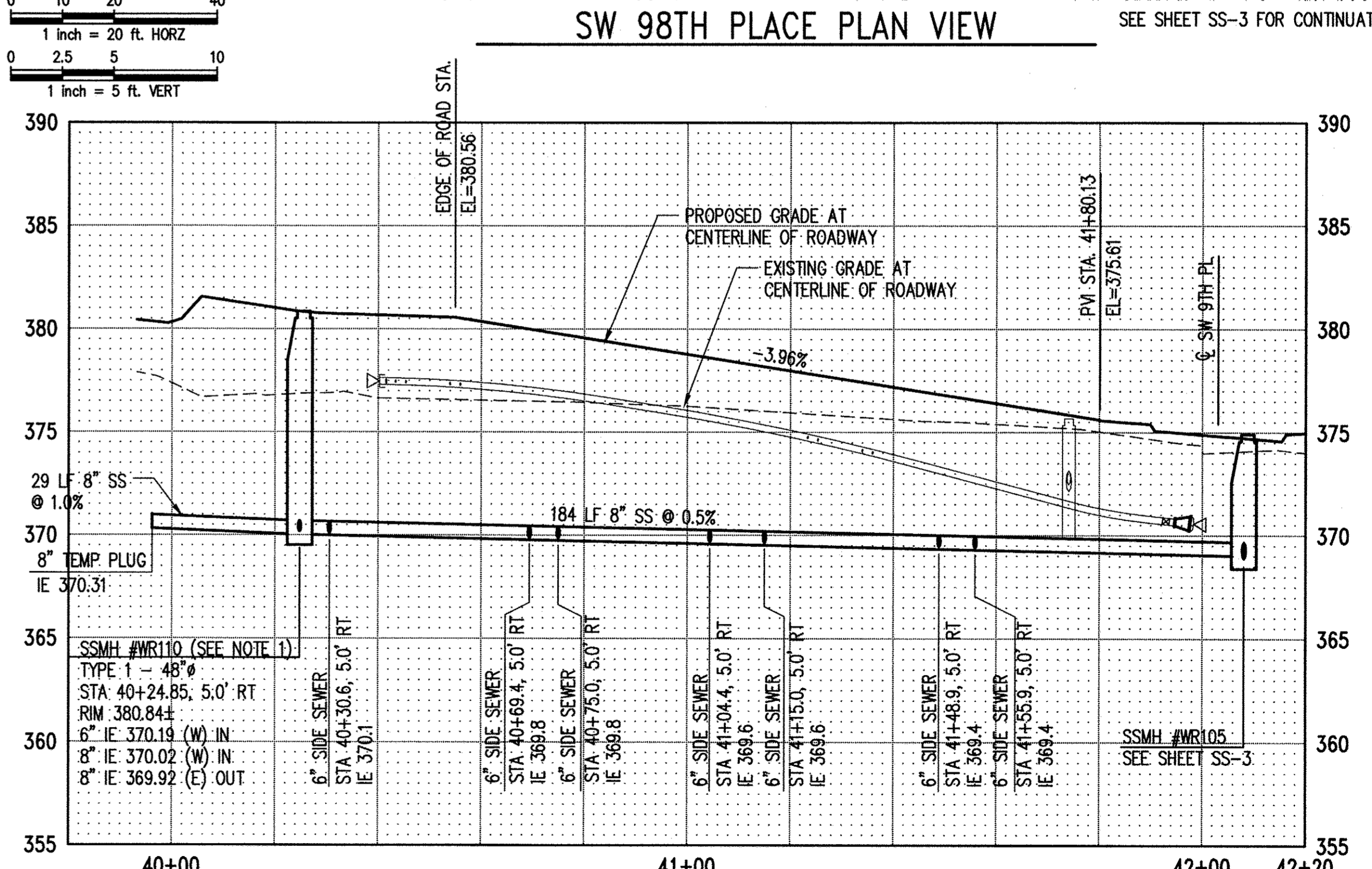
3RD PLACE SW PLAN VIEW

SEE SHEET SS-3 FOR CONTINUATION

SW 98TH PLACE PLAN VIEW



3RD PLACE SW PROFILE



SW 98TH PLACE PROFILE

2/11/2009-14400/114137 (Wind Rose KCSA) CAD (Design SWSSD) SS 03 WR SS-04.dwg

Jan 04, 2017 - 3:16pm

NO.	DATE	BY	CHD.	APPR.	REVISION

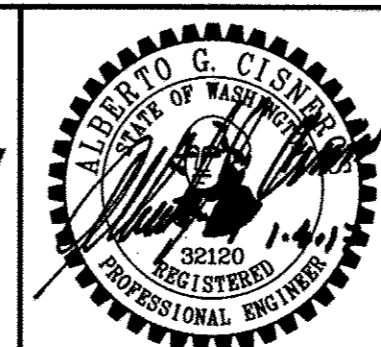
DRAWN BY TAD	DESIGNED BY BJB
CHECKED BY BJB	APPROVED BY ACC
DATE JANUARY 04, 2017	
JOB No. : 114137.10	

811 Call 811
no business days
before you dig

kpff

SCALE:
AS NOTED

1601 5th Avenue, Suite 1600
Seattle, WA 98101
206.622.5822
www.kpff.com



KING COUNTY HOUSING AUTHORITY
WHITE CENTER, WASHINGTON

WIND ROSE

SANITARY SEWER PLAN AND PROFILES

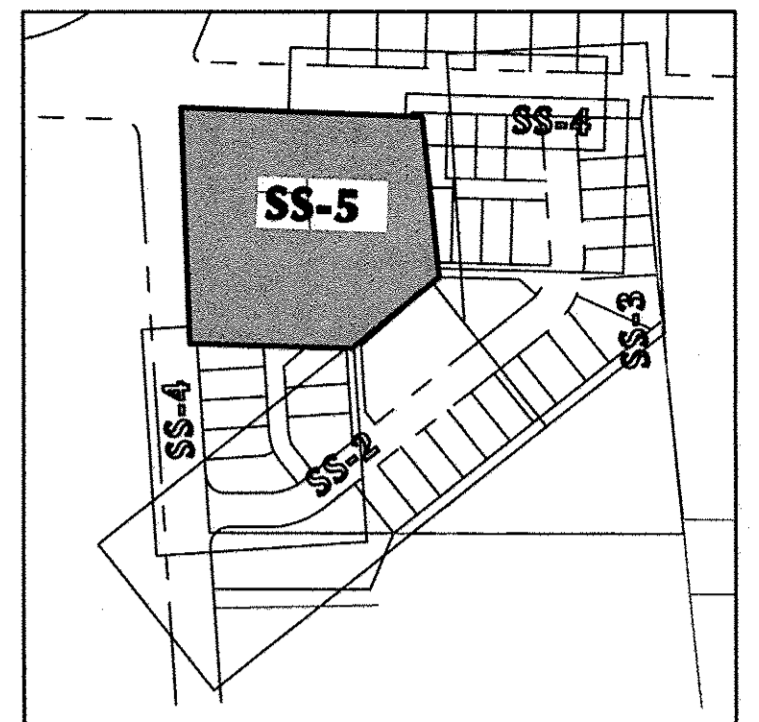
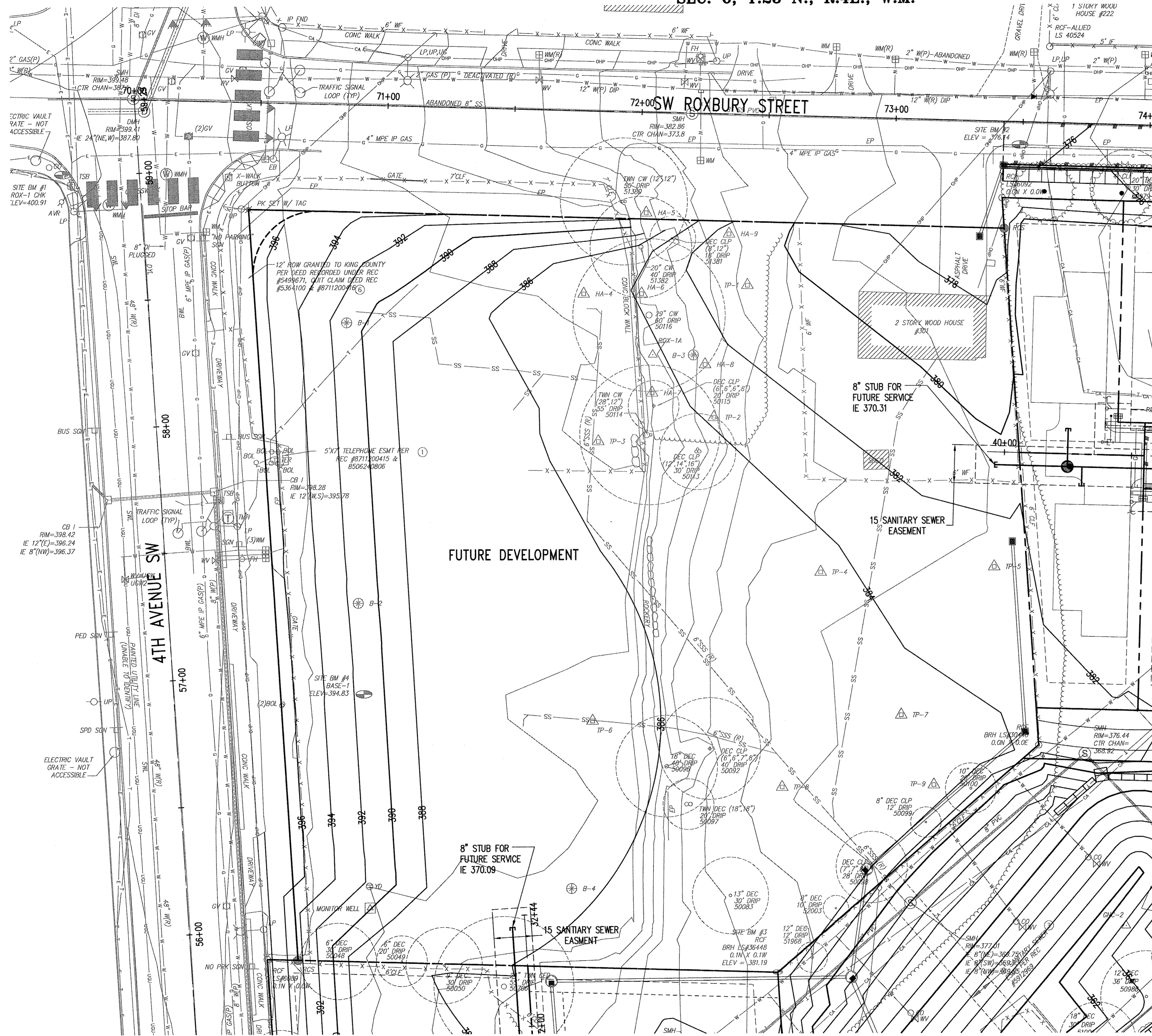
SHEET
SS-4

SEC. 6, T.23 N., R.4E., W.M.

SOUTHWEST SUBURBAN SEWER DISTRICT

APPROVED FOR CONSTRUCTION

DATE



KEY MAP
NTS

Z:\114000-114400\114137 (Wind Rose KCHA)\CAD\Design\SS\SS 04 WR SS-05.dwg

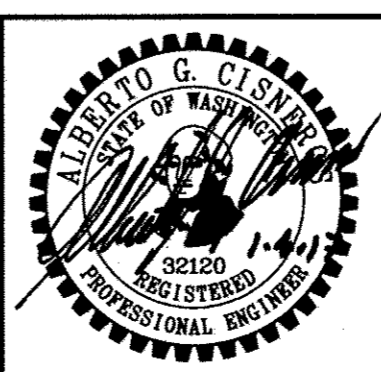
Jan 04, 2017 - 3:18pm KevinB

NO.	DATE	BY	CHD.	APPR.	REVISION

DRAWN BY TAD	DESIGNED BY BJB
CHECKED BY BJB	APPROVED BY ACC
DATE JANUARY 04, 2017	
JOB No. : 114137.10	



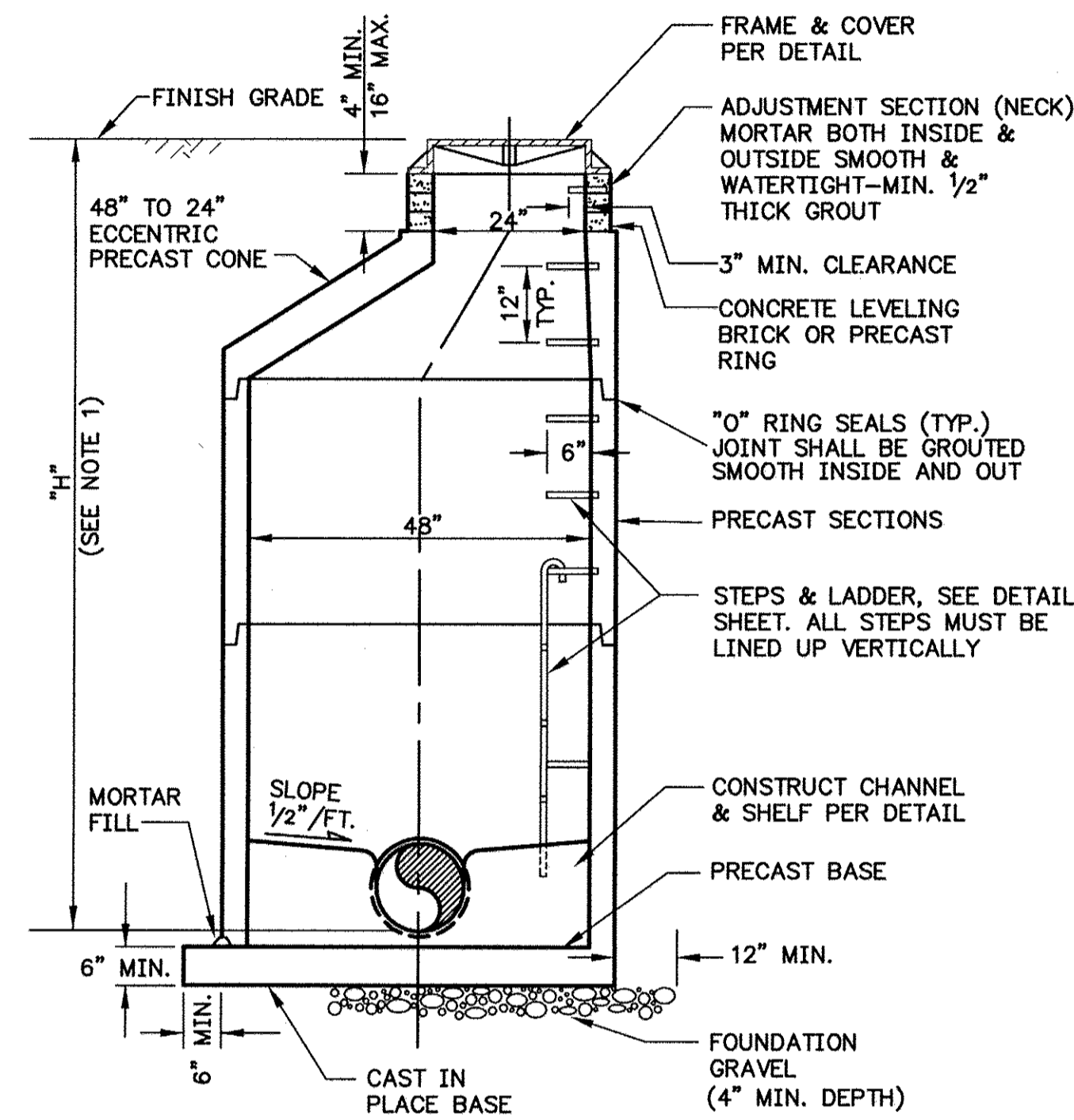
1601 5th Avenue, Suite 1600
Seattle, WA 98101
206.622.5822
www.kpff.com



KING COUNTY HOUSING AUTHORITY
WHITE CENTER, WASHINGTON
WIND ROSE
SANITARY SEWER PLAN

SHEET
SS-5

SCALE:
AS NOTED



NOTES:

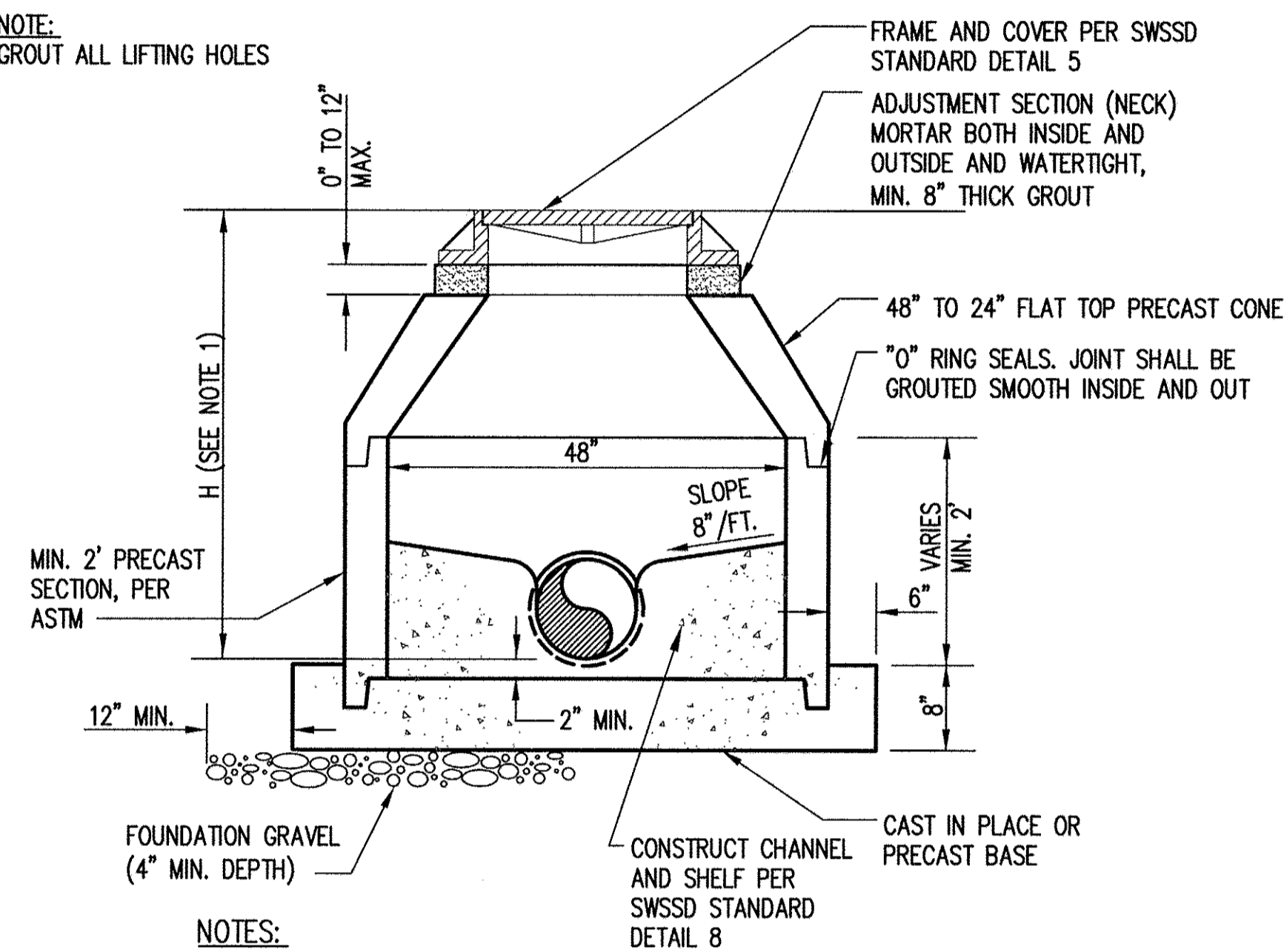
1. WHEN "H" IS LESS THAN 5', USE TYPE IIIA-48" MANHOLE
2. WALL OPENING REQUIREMENTS FOR PIPE:
 - A. HOLE SIZE TO EQUAL PIPE O.D. PLUS MANHOLE WALL THICKNESS
 - B. 8" MINIMUM BETWEEN HOLES
 - C. MAXIMUM PIPE SIZE 12"
 - D. PIPE MANHOLE COLLAR REQUIRED FOR PVC PIPE
3. EXTERNAL MANHOLE JOINTS SHALL BE COMPLETELY ENCAPSULATED WITH A 1 FOOT WIDE STRIP OF "BEST SEAL WRAP" OR EQUAL AS APPROVED BY DISTRICT.

TYPE 1 - 48" MANHOLE

STANDARD MANHOLE DETAIL
SOUTHWEST SUBURBAN SEWER DISTRICT



NOTE:
GROUT ALL LIFTING HOLES

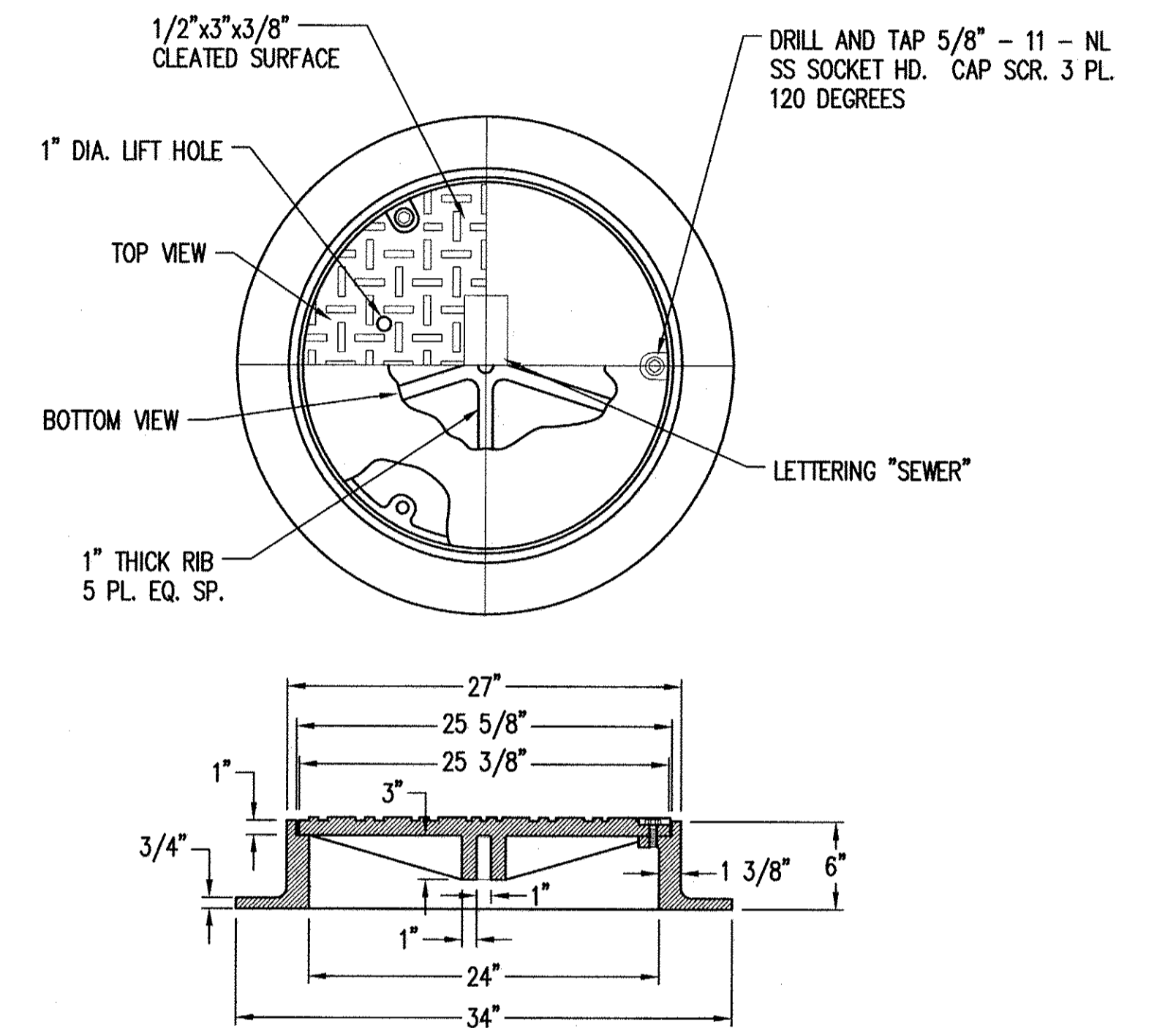
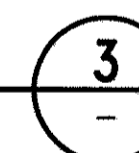


NOTES:

1. MAXIMUM H IS 5'.
2. TO BE USED ONLY WITH PRIOR AUTHORIZATION
3. MAXIMUM PIPE SIZE 12"
4. PIPE MANHOLE COLLAR REQUIRED FOR PVC PIPE
5. EXTERNAL MANHOLE JOINTS AND MANHOLE RINGS SHALL BE COMPLETELY ENCAPSULATED WITH AN 18-INCH WIDE STRIP OF "WRAPID SEAL" OR EQUAL AS APPROVED BY DISTRICT.
6. ALL PIPE OPENINGS SHALL BE BLOCKED OUT AT TIME OF CASTING OR CORE DRILLED.
7. WRAPIDSEAL SHALL NOT BE APPLIED TO MANHOLE FRAME.

TYPE III MANHOLE

SOUTHWEST SUBURBAN SEWER DISTRICT

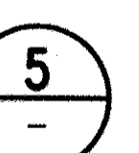


NOTES:

1. ALL FRAMES AND COVERS SHALL BE OLYMPIC FOUNDRY INC. MH 36 D/T OR EQUAL.
2. DRILL LUG HOLES FULL DEPTH.
3. FRAMES WITH OVER BORED HOLES AND WASHERS ON CAP SCREWS TO HOLD DOWN LID NOT ACCEPTABLE.
4. PROVIDE 3/4" Ø X 6" CARRIAGE BOLT AND NUT AND WASHERS FOR LIFT HOLE.
5. SEE SPECIFICATION 02605 FOR ADDITIONAL REQUIREMENTS.

MANHOLE FRAME AND COVER

SOUTHWEST SUBURBAN SEWER DISTRICT



Z:\114000-114400\114137 (Wind Rose KCH) (240) (Design) (SWSSD) SS 05 WF SS-06.dwg

Jan 04, 2017 - 2:29pm KevinB

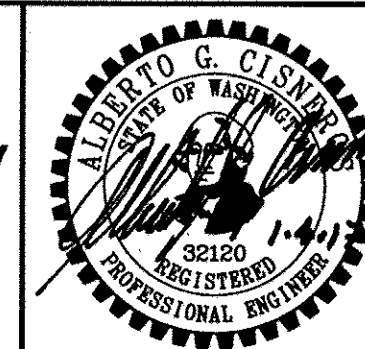
NO.	DATE	BY	CHD.	APPR.	REVISION

DRAWN BY TAD	DESIGNED BY BJB
CHECKED BY BJB	APPROVED BY AGC
DATE JANUARY 04, 2017	
JOB No. : 114137.10	



1601 5th Avenue, Suite 1600
Seattle, WA 98101
206.622.5822
www.kpff.com

SCALE:
AS NOTED

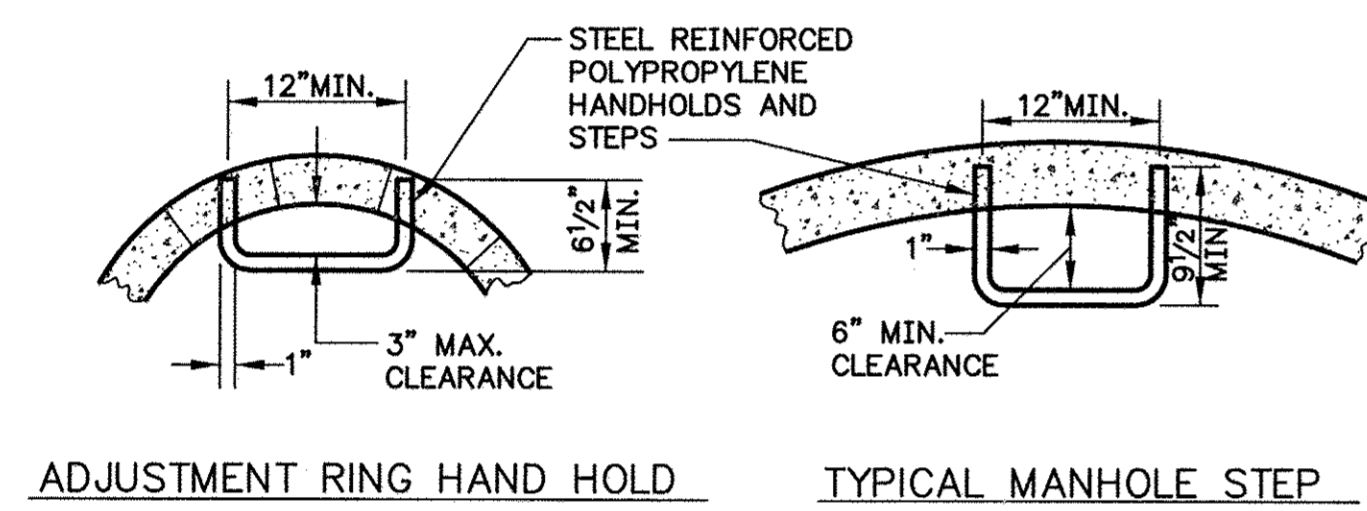


KING COUNTY HOUSING AUTHORITY
WHITE CENTER, WASHINGTON

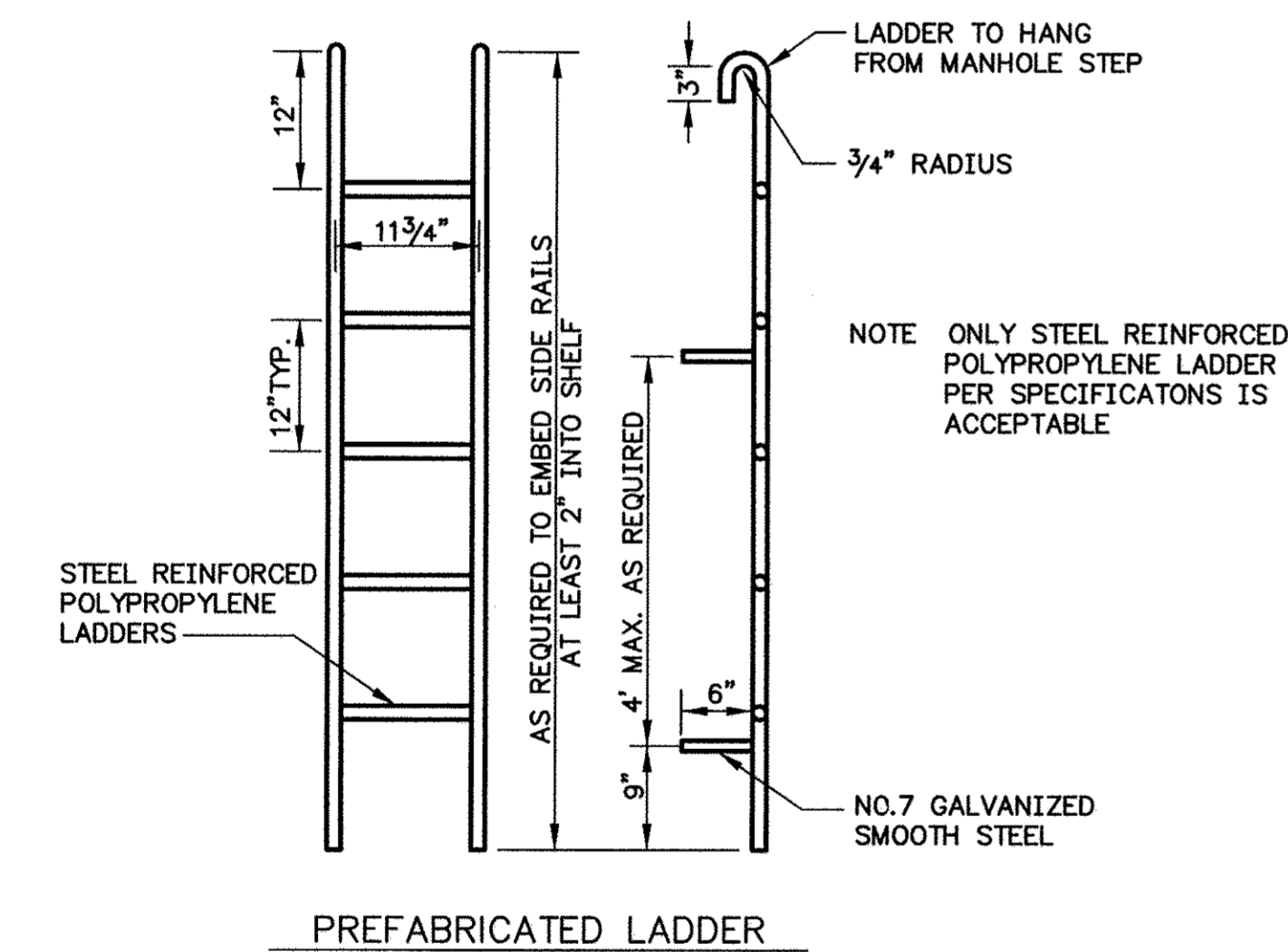
WIND ROSE
SANITARY SEWER DETAILS

SHEET

SS-6

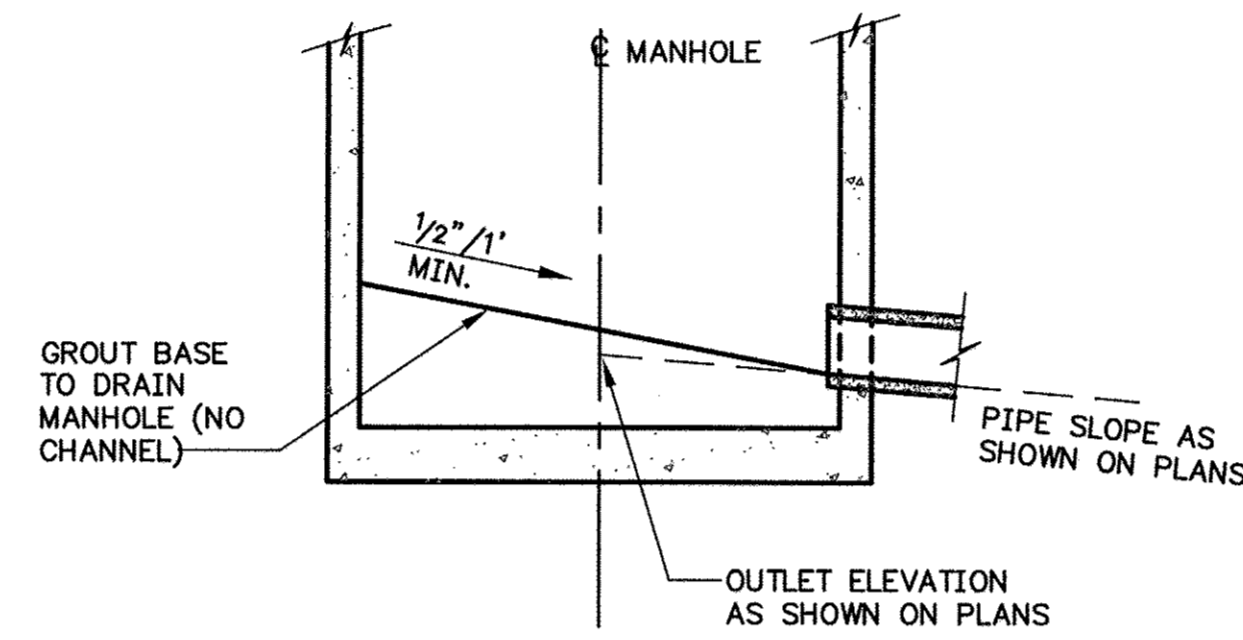


ADJUSTMENT RING HAND HOLD TYPICAL MANHOLE STEP

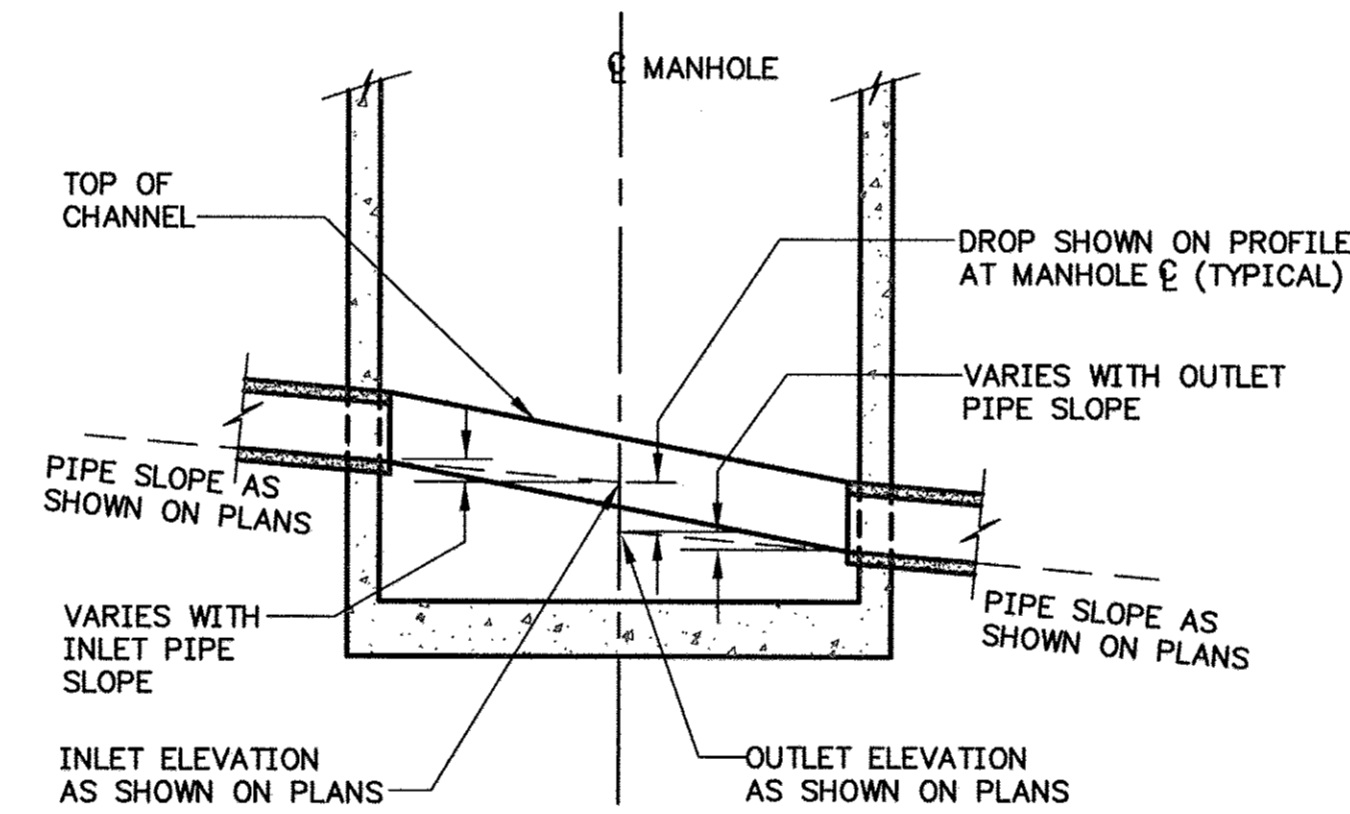


MANHOLE STEPS AND LADDER
SOUTHWEST SUBURBAN SEWER DISTRICT

6



TERMINAL MANHOLE

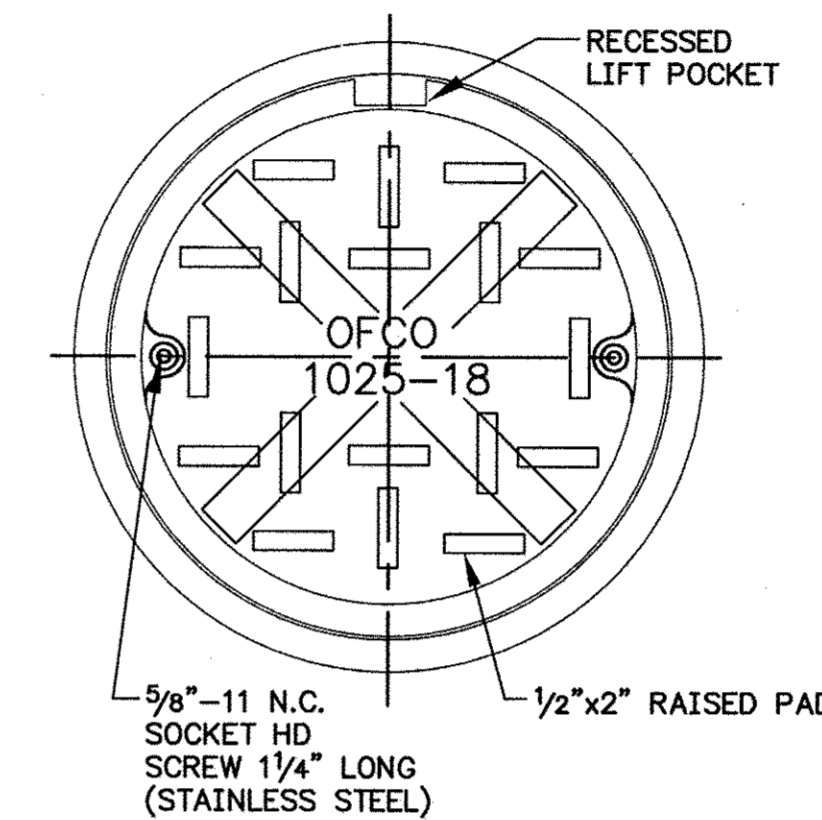


MAIN-LINE MANHOLE

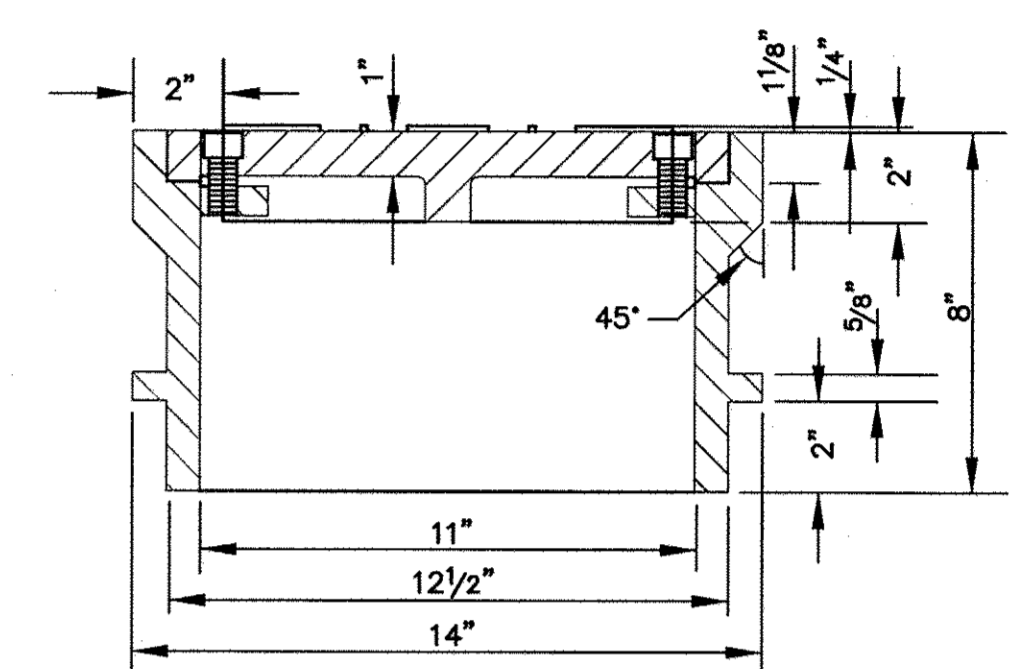
NOTE: CONSTRUCT CHANNEL AND SHELF IN FIELD. SHELF AND CHANNEL TO HAVE PLASTER SMOOTH FINISH. CHANNEL TO BE FULL DIAMETER AND DEPTH OF PIPE.

MANHOLE CHANNELING
SOUTHWEST SUBURBAN SEWER DISTRICT

8



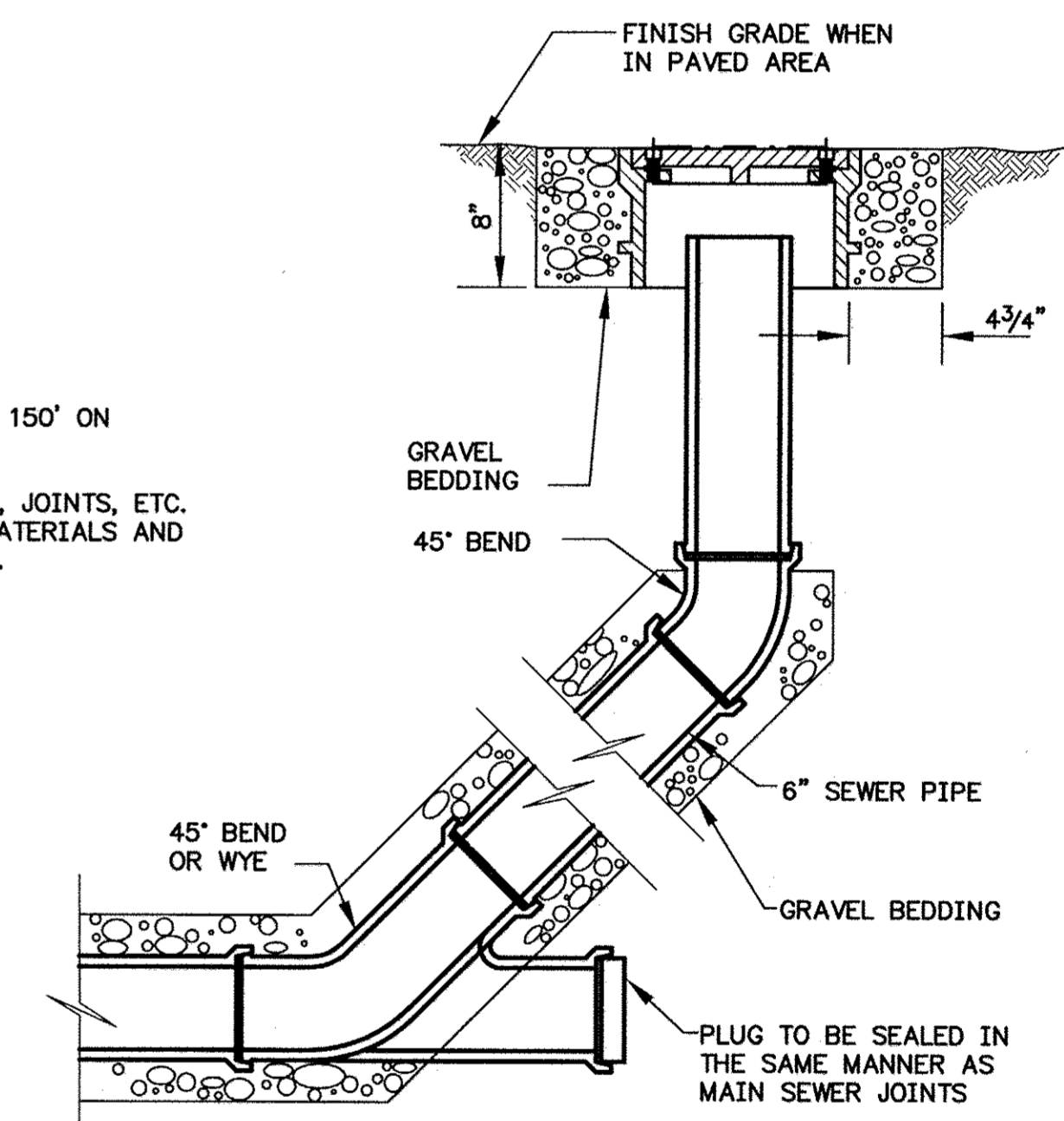
PLAN



ELEVATION
CAST IRON RING AND COVER

NOTES:

1. INSTALL CLEANOUT EVERY 150' ON 6" SEWER RUNS.
2. CLEANOUT PIPE, FITTINGS, JOINTS, ETC. TO CONFORM TO SEWER MATERIALS AND INSTALLATION PER SWSSD.



SEWER CLEANOUT
SOUTHWEST SUBURBAN SEWER DISTRICT

9

2/11/2017 11:13:17 (Mid Rose KCH) CAD (Design) SWSSD SS 05 WF SS-06.dwg
Jan 04, 2017 - 3:20pm
KevinB

NO.	DATE	BY	CHD.	APPR.	REVISION

DRAWN BY TAD	DESIGNED BY BJB
CHECKED BY BJB	APPROVED BY AGC
DATE JANUARY 04, 2017	
JOB No. : 114137.10	

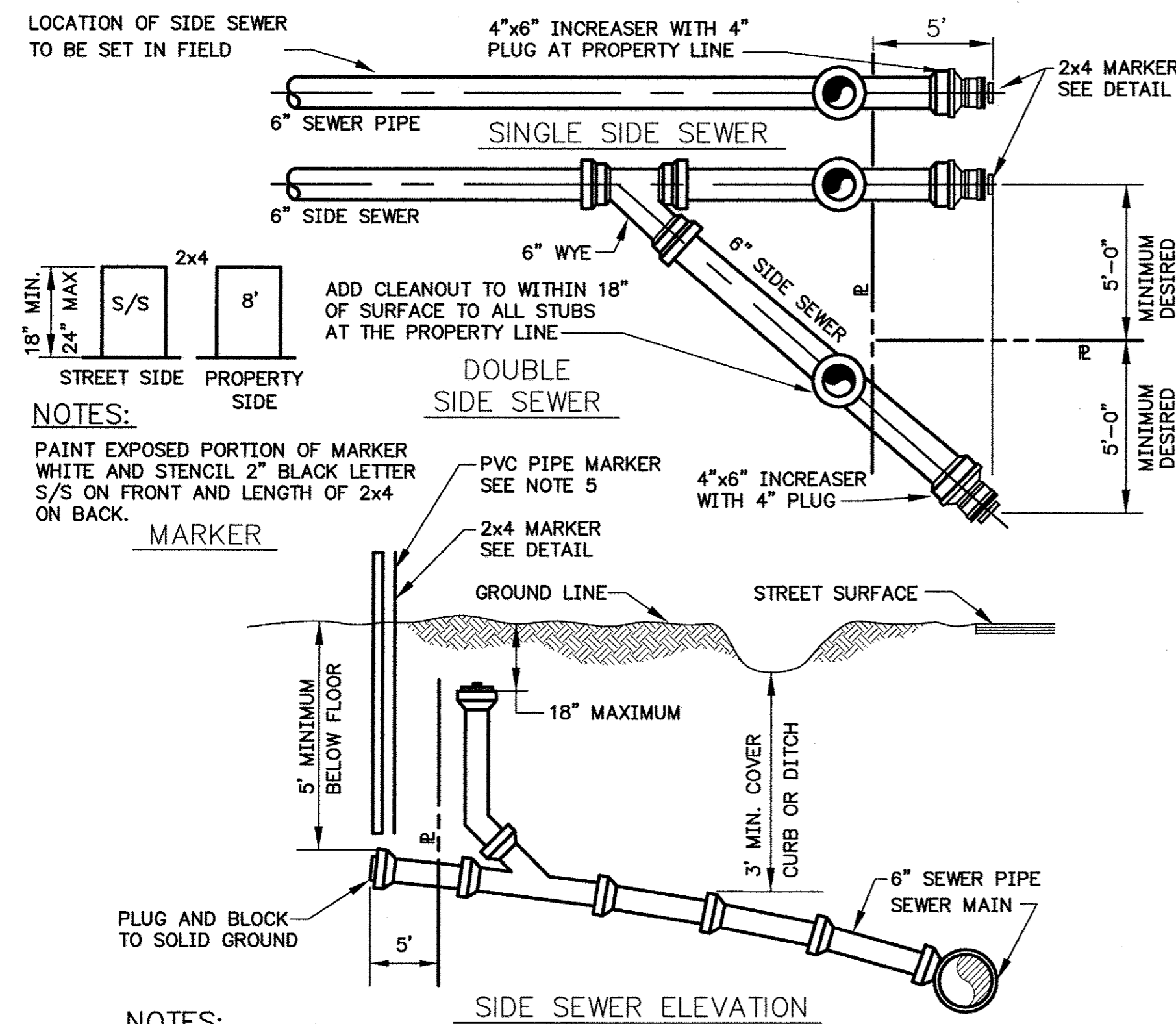


SCALE:
AS NOTED



KING COUNTY HOUSING AUTHORITY
WHITE CENTER, WASHINGTON
WIND ROSE
SANITARY SEWER DETAILS

SHEET
SS-7



NOTES:

PAINT EXPOSED PORTION OF MARKER WHITE AND STENCIL 2" BLACK LETTER S/S ON FRONT AND LENGTH OF 2x4 ON BACK.

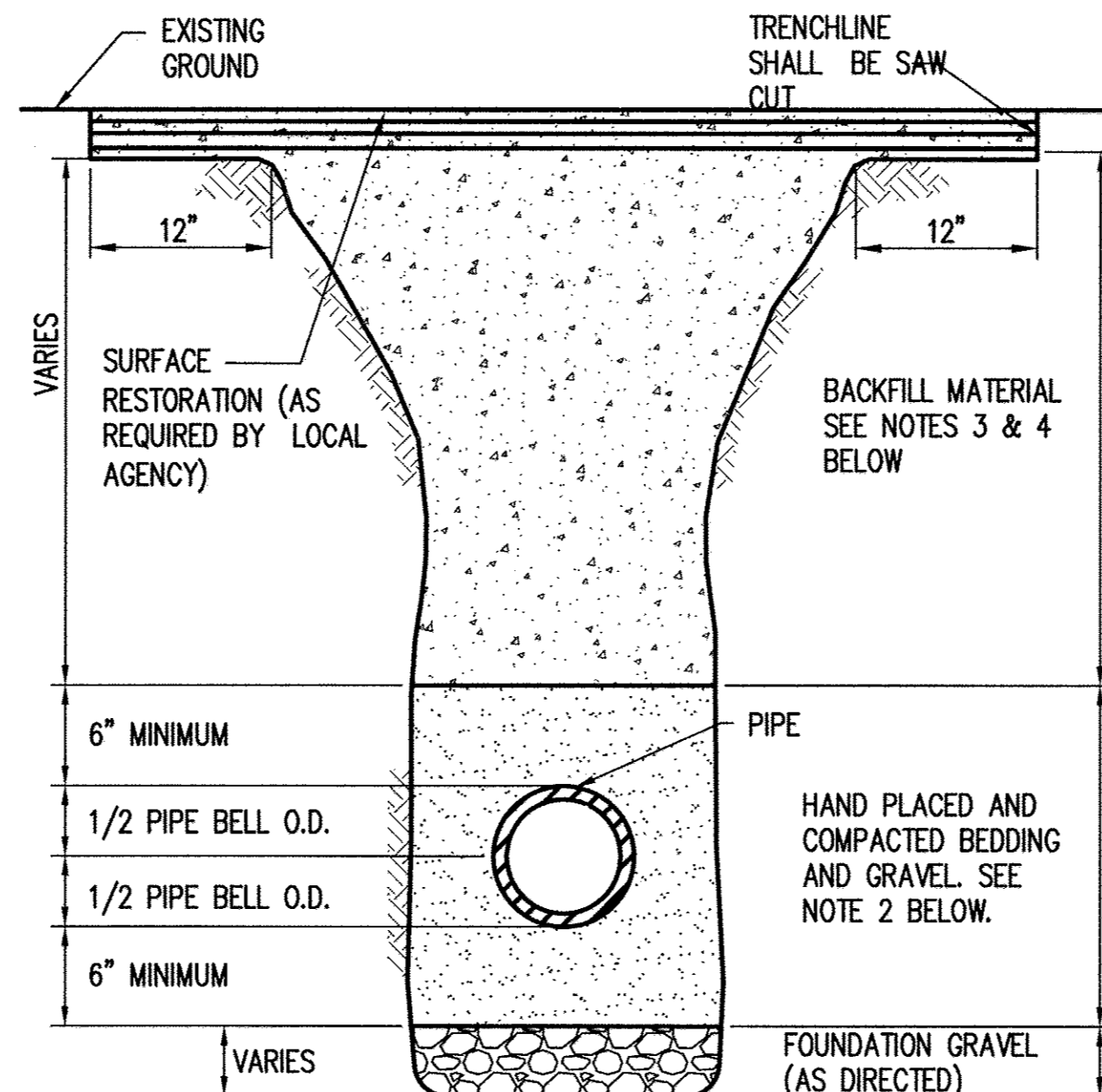
ADD CLEANOUT TO WITHIN 18" OF SURFACE TO ALL STUBS AT THE PROPERTY LINE

NOTES:

- UNLESS OTHERWISE SHOWN ON PLAN, SIDE SEWER SHALL BE SLOPED 2% UP FROM SEWER LINE OR SHALL BE MIN. 5" COVER AT PROPERTY LINE OR 3.5' LOWER THAN THE LOWEST HOUSE ELEVATION, WHICHEVER IS LOWER.
- 6" MINIMUM SIZE PIPE TO PROPERTY LINE. MAXIMUM DEFLECTION PER JOINT IN ACCORDANCE WITH MANUFACTURER'S RECOMMENDATIONS.
- MAXIMUM SLOPE = 2 VERTICAL : 1 HORIZONTAL
- MINIMUM SLOPE = 2%
- A 1 1/4" WHITE PVC PIPE, ASTM 2241 SDR 21 200 PSI SHALL BE PLACED VERTICALLY AT THE END OF EACH STUB AND SHALL RISE TWO FEET ABOVE FINISH GRADE LEVEL OR AS APPROVED BY SWSSD. BOTH ENDS OF THE PVC PIPE SHALL HAVE CAPS GLUED ON AND THE PIPE INTERIOR KEPT CLEAN FOR THE PURPOSE OF FUTURE DEPTH MEASUREMENT.
- PIPE SHALL BE PVC ASTM D3034.

STREET SIDE SEWER
SOUTHWEST SUBURBAN SEWER DISTRICT

10

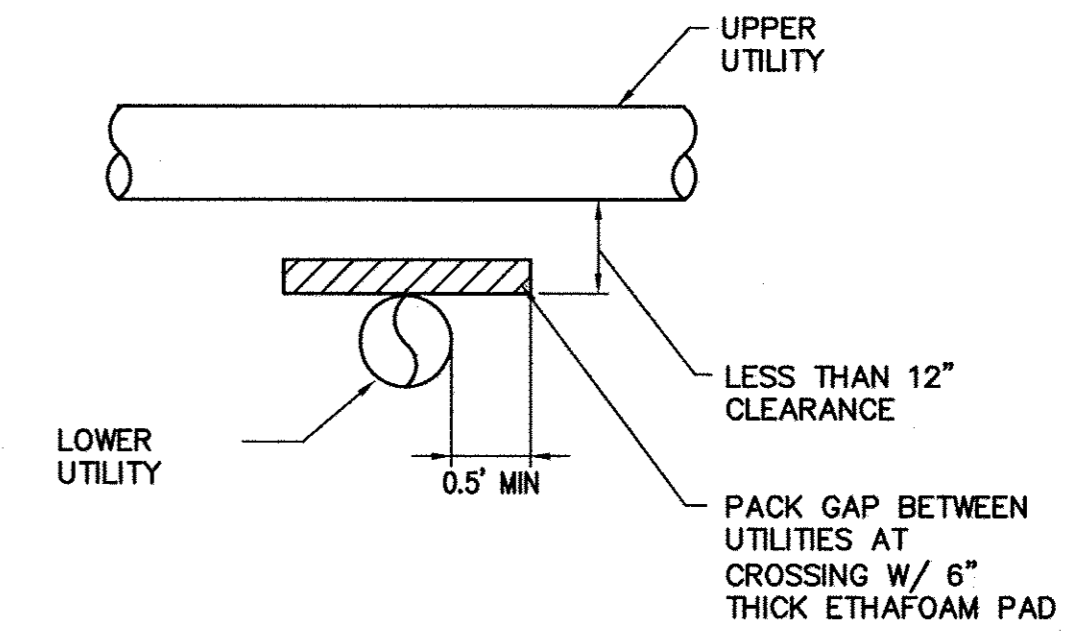


NOTES:

- MINIMUM TRENCH WIDTH SHALL BE: PIPE O.D.+12" (6" ON EACH SIDE OF PIPE). MAXIMUM TRENCH WIDTH SHALL BE: 40" FOR PIPE 18" DIAMETER AND SMALLER (1/2xI.D.)+18" FOR PIPE LARGER THAN 18"
- BEDDING GRAVEL SHALL BE PLACED A MINIMUM OF 6" BELOW AND A MINIMUM OF 6" ABOVE THE PIPE. SEE PROJECT SPECIFICATIONS FOR BEDDING GRAVEL GRADUATION.
- BACKFILL MATERIAL SHALL CONSIST OF IMPORTED GRAVEL MATERIAL AS REQUIRED OR DIRECTED BY SWSSD INSPECTOR. SEE PROJECT SPECIFICATIONS FOR GRADATION. CONTRACTOR SHALL TEST COMPACTION AS LEAST ONCE PER EVERY 300' TO ENSURE 95% COMPACTION.
- CDF MAY BE REQUIRED IN ALL PAVED AREAS.
- TRENCH SECTIONS SHALL BE CONSTRUCTED IN ACCORDANCE WITH THE RIGHT-OF-WAY PERMIT.
- IF USING NON-METALLIC PIPE, METALLIC LOCATOR TAPE SHALL BE BURIED 18-24" ABOVE THE SEWER PIPE. TAPE SHALL READ "CAUTION - BURIED SEWER LINE BELOW".

TYPICAL TRENCH SECTION
SOUTHWEST SUBURBAN SEWER DISTRICT

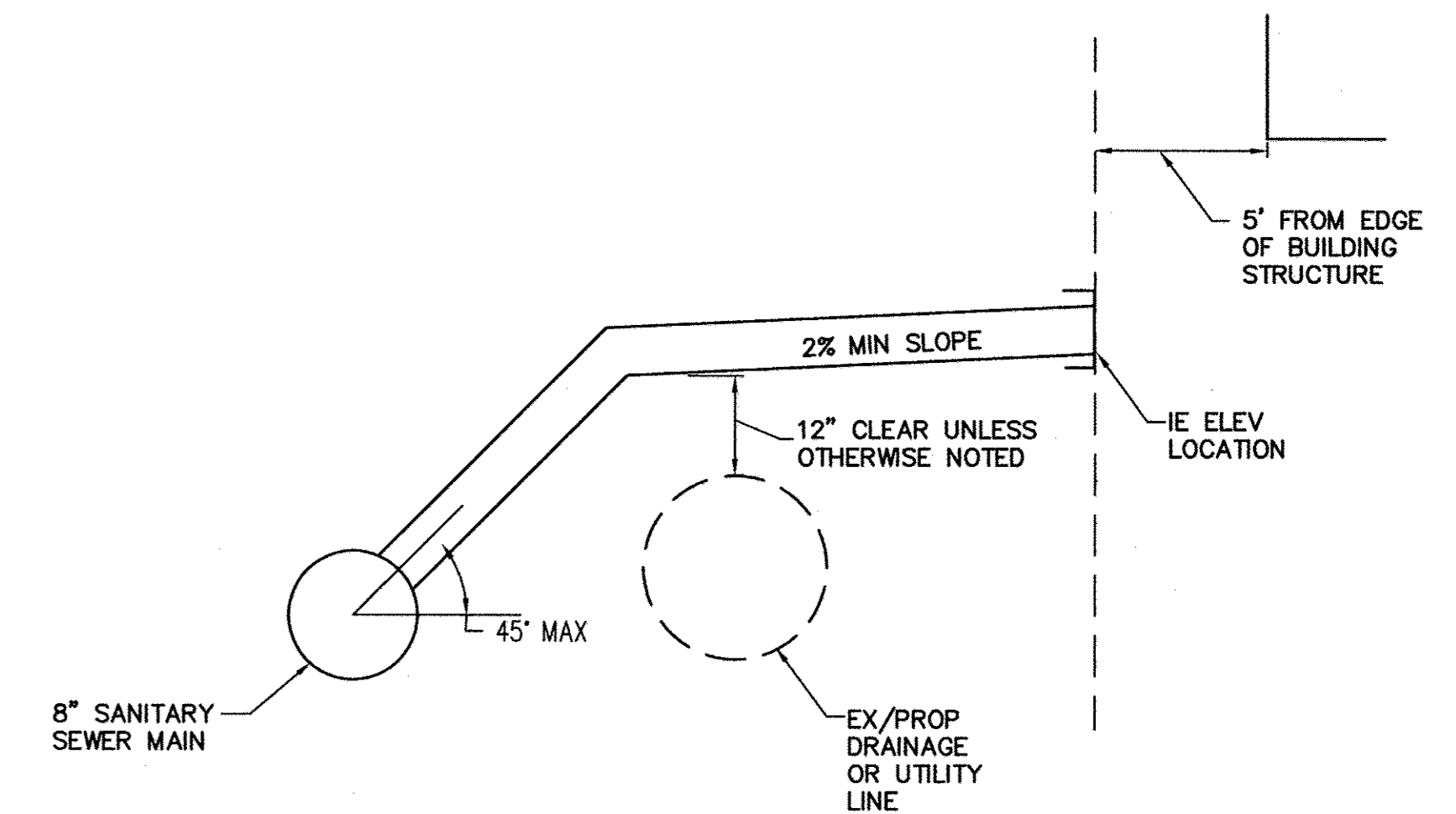
15



ETHAFOAM INSTALLATION DETAIL

NTS

A



SANITARY SIDE SEWER DETAIL

NTS

B

Z:\114000-114400\114137 (Wind Rose KCM)\Design\SWSSD\SS 06 WR SS-06.dwg

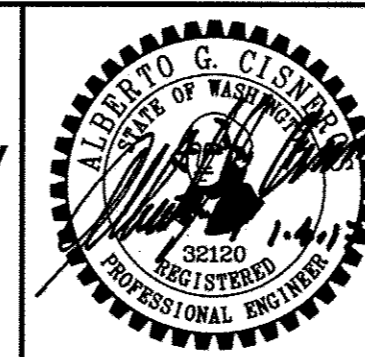
Jan 04, 2017 - 3:10pm KevinB

NO.	DATE	BY	CHD.	APPR.	REVISION

DRAWN BY TAD	DESIGNED BY BJB
CHECKED BY BJB	APPROVED BY AGC
DATE JANUARY 04, 2017	
JOB No. : 114137.10	



1601 5th Avenue, Suite 1600
Seattle, WA 98101
206.622.5822
www.kpff.com



KING COUNTY HOUSING AUTHORITY
WHITE CENTER, WASHINGTON
WIND ROSE
SANITARY SEWER DETAILS

SHEET

SS-8