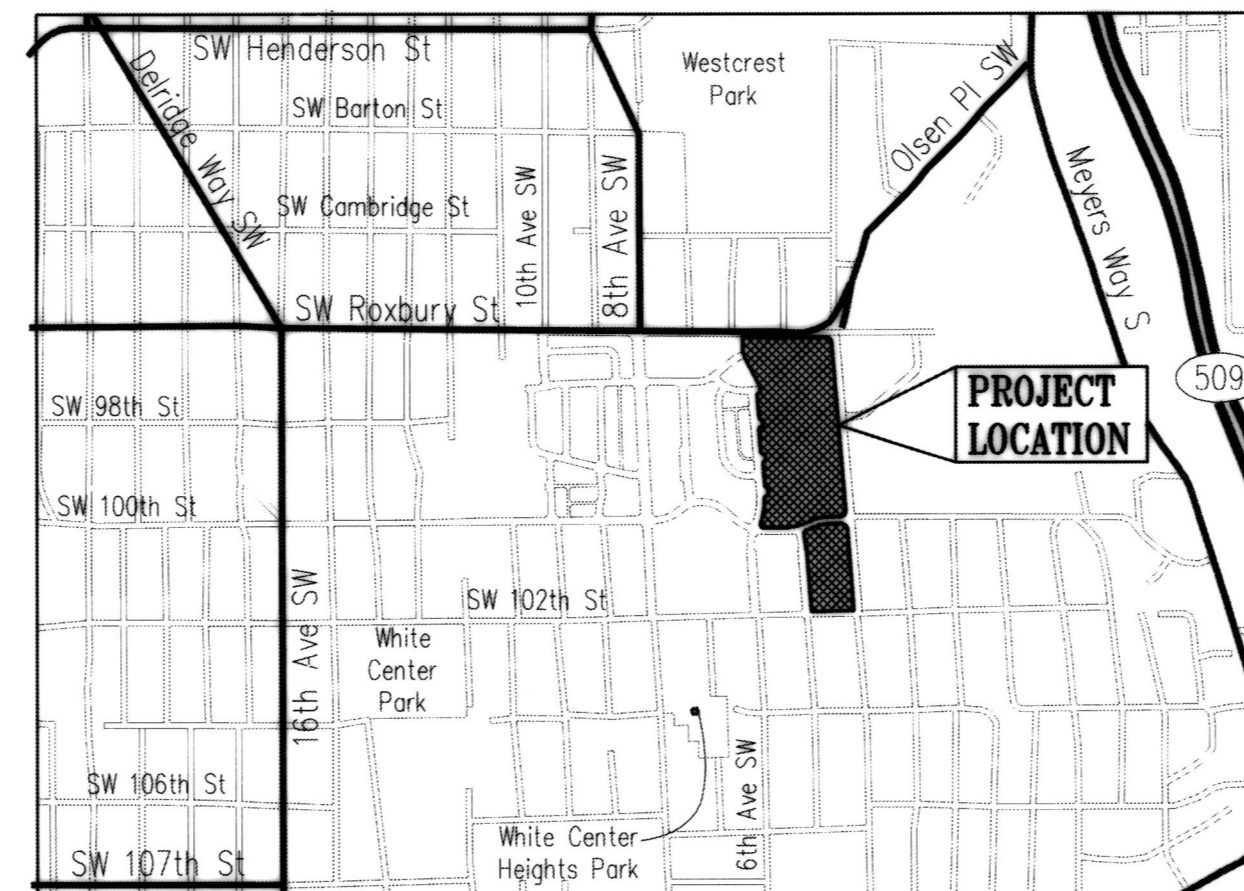


# GREENBRIDGE DIVISION 8

## INFRASTRUCTURE

# SANITARY SEWER IMPROVEMENT PLANS

**SEC. 6, T.23 N., R.4E., W.M.**  
**King County, Washington**  
**NOVEMBER 2018**  
**PERMIT SUBMITTAL**



**VICINITY MAP**  
 N.T.S.

**RECORD DRAWINGS**

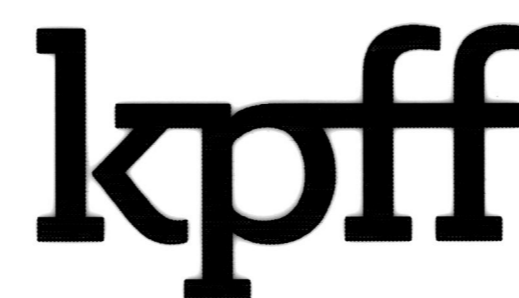
THESE AS-BUILT DOCUMENTS HAVE BEEN PREPARED FROM THE CONTRACTOR'S REDLINED MARK-UPS OF THE CONSTRUCTION DOCUMENTS. THE ENGINEER REVIEWING THESE RECORD DRAWINGS HAS NOT WITNESSED ALL OF THE ELEMENTS OF CONSTRUCTION AND IS NOT RESPONSIBLE FOR ERRORS OR OMISSIONS IN DATA OR CERTIFY THE ACCURACY OF THE INFORMATION PROVIDED BY THE CONTRACTOR'S AS-BUILT REDLINES.

**Contract No.**  
**PROJECT DEVELOPER**

**KING COUNTY HOUSING AUTHORITY**  
 600 ANDOVER PARK WEST  
 SEATTLE, WA. 98188-3326  
 TELEPHONE: (206) 574-1196  
 CONTACT PERSON : JOHN ELIASON

**PROJECT ENGINEER**

**KPFF CONSULTING ENGINEERS**  
 1601 FIFTH AVENUE, SUITE 1600  
 SEATTLE, WASHINGTON 98101  
 TELEPHONE: (206) 622-5822



1601 5th Avenue, Suite 1600  
 Seattle, WA 98101  
 206.622.5822  
 www.kpff.com



APPROVED *R. R. Schulz*  
DATE 1-15-2019

GENERAL NOTES

- A COPY OF THE APPROVED PLAN SHALL BE ON SITE WHENEVER CONSTRUCTION IS IN PROGRESS.
- THE CONTRACTOR SHALL OBTAIN ALL PERMITS REQUIRED FOR WORK WITHIN THE PUBLIC RIGHT OF WAY.
- PRIOR TO ANY CONSTRUCTION ACTIVITY, THE CONTRACTOR SHALL SCHEDULE AND ATTEND A PRE-CONSTRUCTION CONFERENCE WITH SOUTHWEST SUBURBAN SEWER DISTRICT. THE CONTRACTOR SHALL NOTIFY THE OWNER'S PROFESSIONAL ENGINEERING CONSULTANT OF THE PRECONSTRUCTION MEETING TIME AND LOCATION.
- VERTICAL DATUM:**  
VERTICAL DATUM: NAVD 88  
  
BENCH MARK "B" SOUTHERLY TOP FLANGE BOLT BETWEEN THE LETTERS E & L IN THE WORD MUELLER, ON FIRE HYDRANT AT S.W. CORNER OF 8TH AVE S.W. & S.W. 102ND ST. ELEVATION = 407.61'  
  
BENCH MARK "C" CHISELED SQUARE AT INTERSECTION OF BACK OF CONCRETE WALKS AND BACK OF CURBS AT N.E. CORNER 4TH AVE. S.W. & S.W. 102ND ST. ELEVATION = 423.37'
- ALL LOCATIONS OF EXISTING UTILITIES SHOWN HEREON HAVE BEEN ESTABLISHED BY FIELD SURVEY OR OBTAINED FROM AVAILABLE RECORDS AND SHOULD THEREFORE BE CONSIDERED APPROXIMATE ONLY AND NOT NECESSARILY COMPLETE. IT IS THE SOLE RESPONSIBILITY OF THE CONTRACTOR TO INDEPENDENTLY VERIFY THE ACCURACY OF ALL UTILITY LOCATIONS SHOWN AND TO FURTHER DISCOVER AND AVOID ANY OTHER UTILITIES NOT SHOWN HEREON WHICH MAY BE AFFECTED BY THE IMPLEMENTATION OF THIS PLAN.
- THE CONTRACTOR SHALL LOCATE AND PROTECT ALL CASTINGS AND UTILITIES DURING CONSTRUCTION AND SHALL CONTACT THE UNDERGROUND UTILITIES LOCATOR SERVICE (1-800-424-5555) AT LEAST 48 HOURS PRIOR TO CONSTRUCTION.
- THE CONTRACTOR SHALL ADJUST ALL EXISTING MANHOLE RIMS, DRAINAGE STRUCTURE LIDS, VALVE BOXES, AND UTILITY ACCESS STRUCTURES TO FINISH GRADE WITHIN AREAS AFFECTED BY THE PROPOSED IMPROVEMENTS.
- THE CONTRACTOR SHALL FIELD VERIFY THE HORIZONTAL AND VERTICAL POSITION OF ALL PROPOSED UTILITY POINTS OF CONNECTION, AND SHALL POTHOLE ALL CROSSINGS WITH EXISTING UTILITIES PRIOR TO THE START OF DEMOLITION AND INSTALLATION OF PROPOSED UTILITIES.
- SURVEY PREPARED BY GOLDSMITH LAND DEVELOPMENT SERVICES, 1215 114TH AVE SE, BELLEVUE, WA. PH# (425)-462-1080

SWSSD GENERAL NOTES

- ALL CONSTRUCTION SHALL CONFORM TO THE REQUIREMENTS OF THE SOUTHWEST SUBURBAN SEWER DISTRICT WHICH ARE CONTAINED IN A BOUND VOLUME ENTITLED, "DEVELOPER PROJECT MANUAL".
- EXISTING UTILITY LOCATIONS SHOWN ARE APPROXIMATE ONLY, AND IT SHALL BE THE SOLE RESPONSIBILITY OF THE CONTRACTOR TO DETERMINE CORRECT UTILITY LOCATIONS AND TO PRESERVE AND PROTECT ALL EXISTING UTILITIES. FOR UTILITY LOCATIONS IN KING COUNTY, CALL 1-800-424-5555 AT LEAST 2 BUSINESS DAYS PRIOR TO CONSTRUCTION. SOUTHWEST SUBURBAN SEWER DISTRICT AND THE ENGINEER, SHALL BE CONTACTED IMMEDIATELY IF A CONFLICT EXISTS. ALL UTILITIES DISTURBED DURING CONSTRUCTION SHALL BE RESTORED TO A CONDITION THAT IS BETTER THAN THAT PRIOR TO THE START OF CONSTRUCTION.
- ALL SIDE SEWER STUBS SHALL BE 6-INCH DIAMETER PIPE CONSTRUCTED AT A MINIMUM SLOPE OF 2.00%, UNLESS OTHERWISE NOTED.
- ALL SIDE SEWER STUBS SHALL EXTEND A MINIMUM OF 5 FEET INSIDE THE PROPERTY LINE AND THE ENDS MARKED AS DESCRIBED IN SWSSD STANDARD DETAIL 10.
- 15-FOOT EASEMENTS: 7-1/2 FEET EACH SIDE OF SANITARY SEWER LINE AND/OR APPURTENANCES SHALL BE FURNISHED BY THE DEVELOPER WHEN THE SEWERS ARE LOCATED ON OTHER THAN PUBLIC RIGHT-OF-WAYS.
- PLAN AND PROFILE INFORMATION AS FURNISHED BY THE DEVELOPER OR HIS ENGINEER.
- MINIMUM SEPARATION OF POTABLE WATER MAINS AND SANITARY SEWER LINES SHALL BE IN ACCORDANCE WITH SECTION C1-9.1 OF THE "CRITERIA FOR SEWAGE WORKS DESIGN" PUBLISHED BY THE WASHINGTON STATE DEPARTMENT OF ECOLOGY AS REVISED DECEMBER 1998.
- A PLUG SHALL BE PLACED IN THE OUTLET PIPE OF THE EXISTING MANHOLE WHICH IS TO BE CONNECTED TO OR THE OUTLET PIPE OF THE FIRST NEW MANHOLE CONSTRUCTED. A TIGHTLINE BYPASS MAY BE REQUIRED IN PLACE OF THE PLUG. THIS PLUG OR BYPASS SHALL REMAIN IN PLACE AND MAY NOT BE REMOVED WITHOUT THE PERMISSION OF THE SOUTHWEST SUBURBAN SEWER DISTRICT. REMOVAL WILL RESULT IN FORFEITURE OF SYSTEM ISOLATION DEPOSIT.
- ALL PIPES ENTERING/LEAVING MANHOLES SHALL BE ALIGNED WITH THE CENTER OF THE MANHOLE. MANHOLE CHANNELS SHALL BE SHAPED TO ALLOW PLACEMENT AND USE OF THE DISTRICT'S TELEVISION INSPECTION EQUIPMENT. ALL CHANNELS SHALL BE CONSTRUCTED TO THE DEPTH AND DIAMETER OF THE SEWER PIPES.
- FOR CONNECTIONS INTO EXISTING MANHOLES, WALL AND SHELF MUST BE CORE DRILLED..
- THE DEVELOPER SHALL BE RESPONSIBLE FOR ACQUIRING ALL NECESSARY EASEMENTS AND AGREEMENTS PRIOR TO CONSTRUCTION. THE DEVELOPER SHALL BE RESPONSIBLE FOR ACQUIRING ALL EASEMENT RELEASES UPON COMPLETION OF CONSTRUCTION AND PRIOR TO FINAL PROJECT ACCEPTANCE.
- ALL WORK WITHIN THE CITY OR COUNTY RIGHT-OF-WAY SHALL CONFORM WITH ALL APPLICABLE REQUIREMENTS AS SET FORTH BY THE ASSOCIATED AGENCY. EXISTING ASPHALT SHALL BE NEAT LINE CUT PRIOR TO EXCAVATION. ALSO SEE THE RIGHT-OF-WAY CONSTRUCTION PERMIT OBTAINED FOR THIS PROJECT.
- ALL SEWER PIPE INSTALLED SHALL BE TESTED FOR LEAKAGE PER SOUTHWEST SUBURBAN SEWER DISTRICT STANDARDS.
- A PRE-CONSTRUCTION CONFERENCE SHALL BE HELD PRIOR TO THE START OF CONSTRUCTION AND SHALL BE ATTENDED BY THE CONTRACTOR, SWSSD REPRESENTATIVES, AND OTHER INTERESTED AGENCIES.
- AT THE DEVELOPER'S EXPENSE THE DISTRICT SHALL PERFORM VIDEO INSPECTION OF ALL SANITARY SEWER MAINS PRIOR TO FINAL ACCEPTANCE. THE CONTRACTOR SHALL CORRECT ALL DEFICIENCIES FOUND DURING THE INSPECTION.
- ANY CHANGES TO THIS DESIGN SHALL BE APPROVED BY SOUTHWEST SUBURBAN SEWER DISTRICT AND THE ENGINEER PRIOR TO INSTALLATION.
- ALL NEW MANHOLES SHALL HAVE ALL JOINTS ENCAPSULATED USING 12 INCH WIDE STRIP OF BEST SEAL WRAP SEALANT.

LEGEND AND ABBREVIATIONS

	DETAIL REFERENCE NUMBER SECTION SHEET
B/W	BACK OF WALK
CL	CENTERLINE
CTR	CENTER
EL/ELEV	ELEVATION
G	GAS
GD	GREEN DRAINAGE
EX, EXIST.	EXISTING
IE	INVERT ELEVATION
RL	PROPERTY LINE
P.O.C.	POINT OF CONNECTION
R/W	RIGHT OF WAY
SCL	SEATTLE CITY LIGHT
SD	STORM DRAINAGE
SL	SLEEVE
SS	SANITARY SEWER
STD(S)	STANDARD(S)
SWSSD	SOUTHWEST SUBURBAN SEWER DISTRICT
TB	THRUST BLOCK
WL	WATER LINE
W/	WITH
	FIRE HYDRANT
	WATER METER
	PROPOSED WATER SYSTEM
	EXISTING WATER SYSTEM
	PROPOSED SANITARY SEWER MANHOLE
	EXISTING SANITARY SEWER MANHOLE
	FINISHED GRADE 10' CONTOUR
	FINISHED GRADE 2' CONTOUR
	EXISTING CONTOUR
	FRANCHISE UTILITIES

DRAWING INDEX

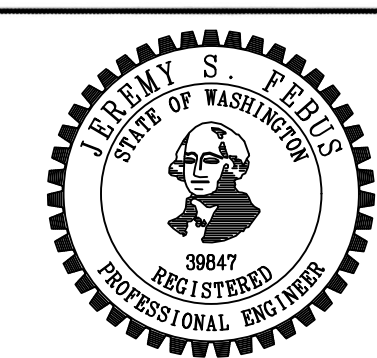
SHEET	DRAWING TITLE
SS-1	SANITARY SEWER NOTES
SS-1A	OVERALL PLAN
SS-2	SW 96TH PLACE PLAN AND PROFILE
SS-3	5TH AVENUE SW PLAN AND PROFILE
SS-4	5TH AVENUE SW PLAN AND PROFILE
SS-5	SW 99TH PLACE PLAN AND PROFILE
SS-6	SW 97TH PLACE PLAN AND PROFILE
SS-7	SW 98TH STREET PLAN AND PROFILE
SS-8	SW 98TH PLACE PLAN AND PROFILE
SS-9	TRACT A-801 PLAN AND PROFILE
SS-10	TRACT A-802 PLAN AND PROFILE
SS-11	TRACT A-803 PLAN AND PROFILE
SS-12	TRACT A-804 PLAN AND PROFILE
SS-13	TRACT A-805 PLAN AND PROFILE
SS-14	TRACT A-806 PLAN AND PROFILE
SS-15	TRACT A-806 PLAN AND PROFILE
SS-16	TRACT A-806 PLAN AND PROFILE
SS-17	SW 101ST PLACE AND 5TH PLACE SW PLAN AND PROFILE
SS-18	5TH PLACE SW AND SW 102ND PLACE PLAN AND PROFILE
SS-19	5TH AVENUE SW PLAN AND PROFILE
SS-20	SANITARY SEWER DETAILS
SS-21	SANITARY SEWER DETAILS

RECORD DRAWINGS

THESE AS-BUILT DOCUMENTS HAVE BEEN PREPARED FROM THE CONTRACTOR'S REDLINED MARK-UPS OF THE CONSTRUCTION DOCUMENTS. THE ENGINEER REVIEWING THESE RECORD DRAWINGS HAS NOT WITNESSED ALL OF THE ELEMENTS OF CONSTRUCTION AND IS NOT RESPONSIBLE FOR ERRORS OR OMISSIONS IN DATA OR CERTIFY THE ACCURACY OF THE INFORMATION PROVIDED BY THE CONTRACTOR'S AS-BUILT REDLINES.

NO.	DATE	BY	CHD.	APPR.	REVISION
4	09/13/21	BJB	JCG	JF	FINAL CORRECTED PLANS - PHASE 1
3	11/20/18	BJB	BJB	MAV	MYLAR SUBMITTAL
2	10/31/17	BJB	BJB	AGC	REVISED PER SWSSD COMMENTS
1	4/5/17	BJB	BJB	AGC	ORIGINAL SUBMITTAL

DRAWN BY BJB, TAD	DESIGNED BY BJB
CHECKED BY BJB	APPROVED BY AGC
DATE NOVEMBER 20, 2018	
J O B No. : 1600206	



**KING COUNTY HOUSING AUTHORITY**  
WHITE CENTER, WASHINGTON

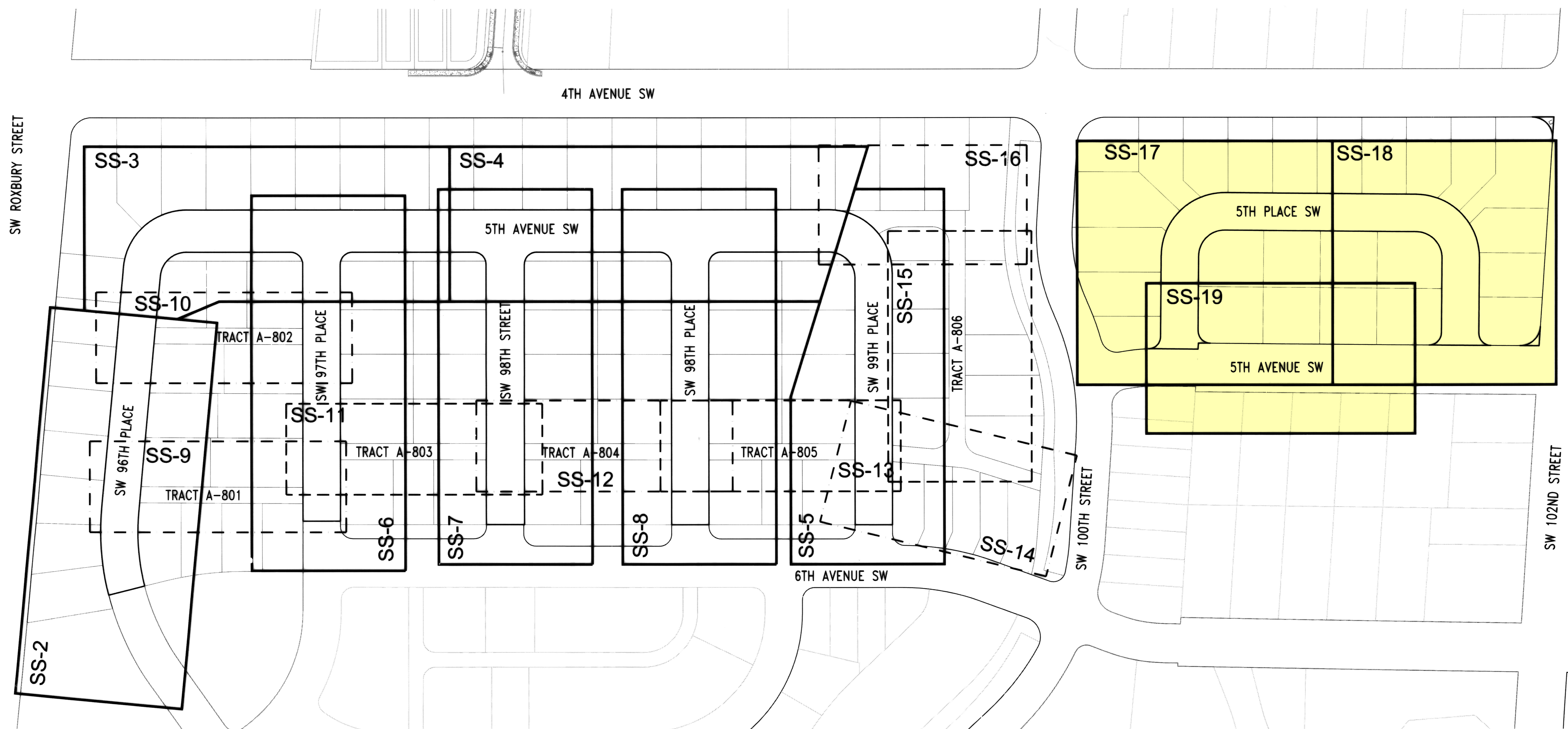
**GREENBRIDGE DIVISION 8**

**SANITARY SEWER NOTES**

SHEET  
**SS-1**

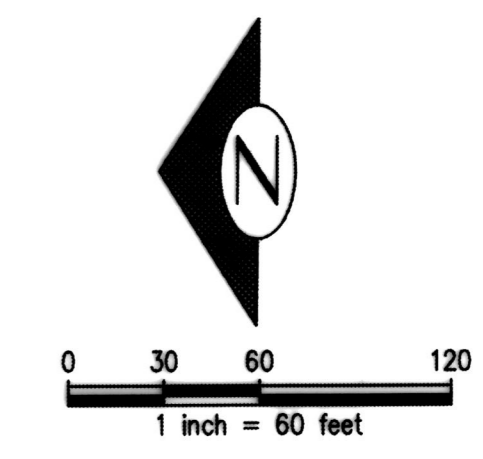
Z:\1600001-1600999 (Greenbridge) CAD\Design\02-Design Development\SSSD\01-08 SS 1 NOTES.dwg Nov 20, 2018 10:00am brianb

APPROVED *Rich Schule*  
DATE 1-15-2019



**RECORD DRAWINGS**

THESE AS-BUILT DOCUMENTS HAVE BEEN PREPARED FROM THE CONTRACTOR'S REDLINED MARK-UPS OF THE CONSTRUCTION DOCUMENTS. THE ENGINEER REVIEWING THESE RECORD DRAWINGS HAS NOT WITNESSED ALL OF THE ELEMENTS OF CONSTRUCTION AND IS NOT RESPONSIBLE FOR ERRORS OR OMISSIONS IN DATA OR CERTIFY THE ACCURACY OF THE INFORMATION PROVIDED BY THE CONTRACTOR'S AS-BUILT REDLINES.



Z:\1600206-1600989\1600206 (Greenbridge)\CAD\Design Development\SSD\02-08 SS to Overall PLAN.dwg Nov 20, 2018 - 1:09pm bjoab

NO.	DATE	BY	CHD.	APPR.	REVISION
4	09/13/21	BJB	JCG	JF	FINAL CORRECTED PLANS - PHASE 1
3	11/20/18	BJB	BJB	MAV	MYLAR SUBMITTAL
2	10/31/17	BJB	BJB	AGC	REVISED PER SWSSD COMMENTS
1	4/5/17	BJB	BJB	AGC	ORIGINAL SUBMITTAL

DRAWN BY BJB, TAD  
DESIGNED BY BJB  
CHECKED BY BJB  
APPROVED BY AGC  
DATE NOVEMBER 20, 2018  
JOB No. : 1600206

**811 Call 811**  
two business days before you dig

SCALE: AS NOTED

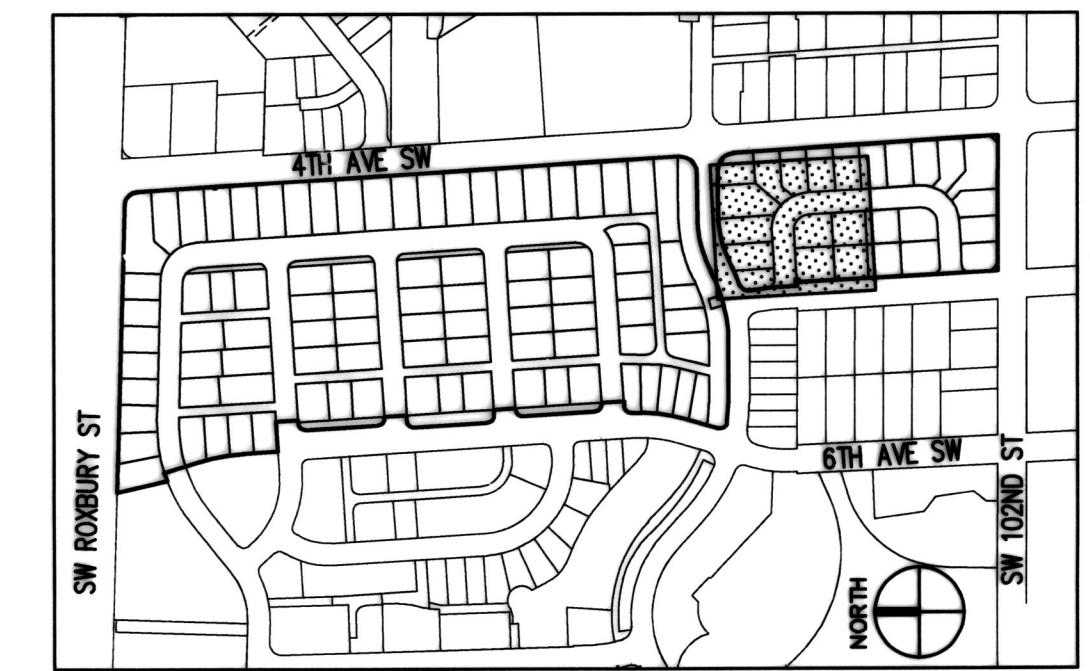
**kpff**  
1601 5th Avenue, Suite 1600  
Seattle, WA 98101  
206.622.5822  
www.kpff.com

**Greenbridge**  
King County Housing Authority

**KING COUNTY HOUSING AUTHORITY**  
WHITE CENTER, WASHINGTON  
**GREENBRIDGE DIVISION 8**  
OVERALL PLAN

SHEET  
**SS-1A**

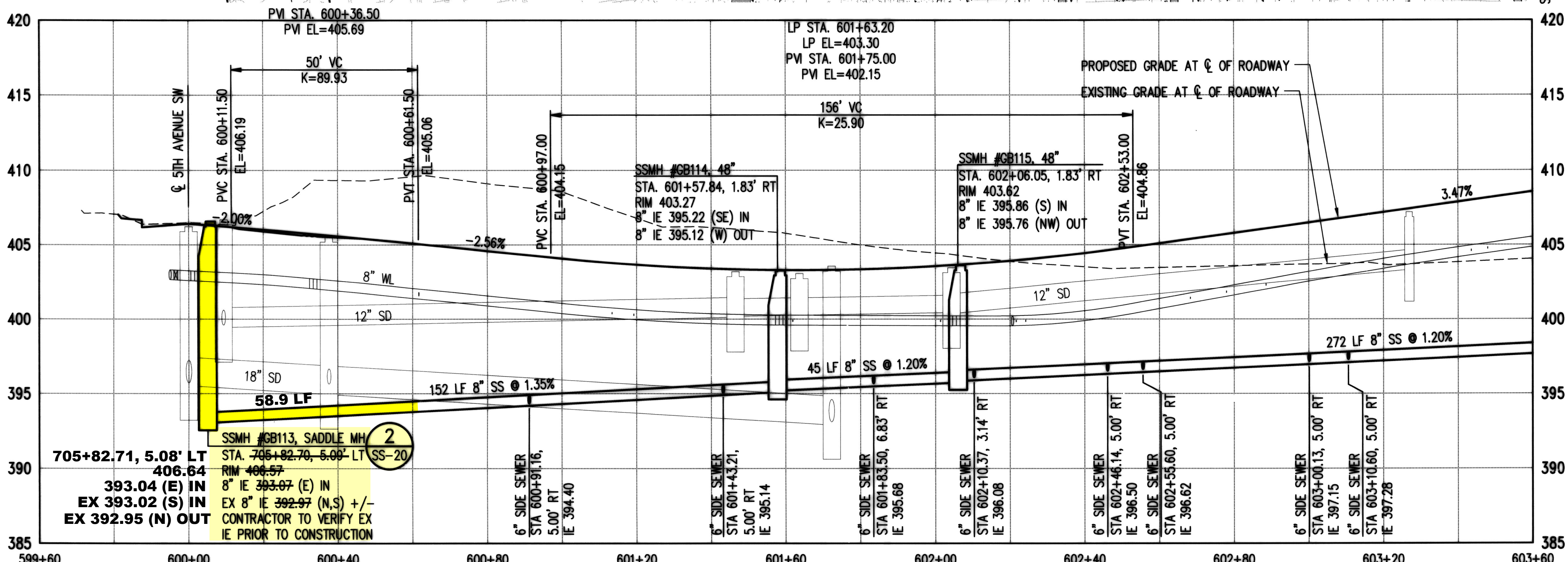
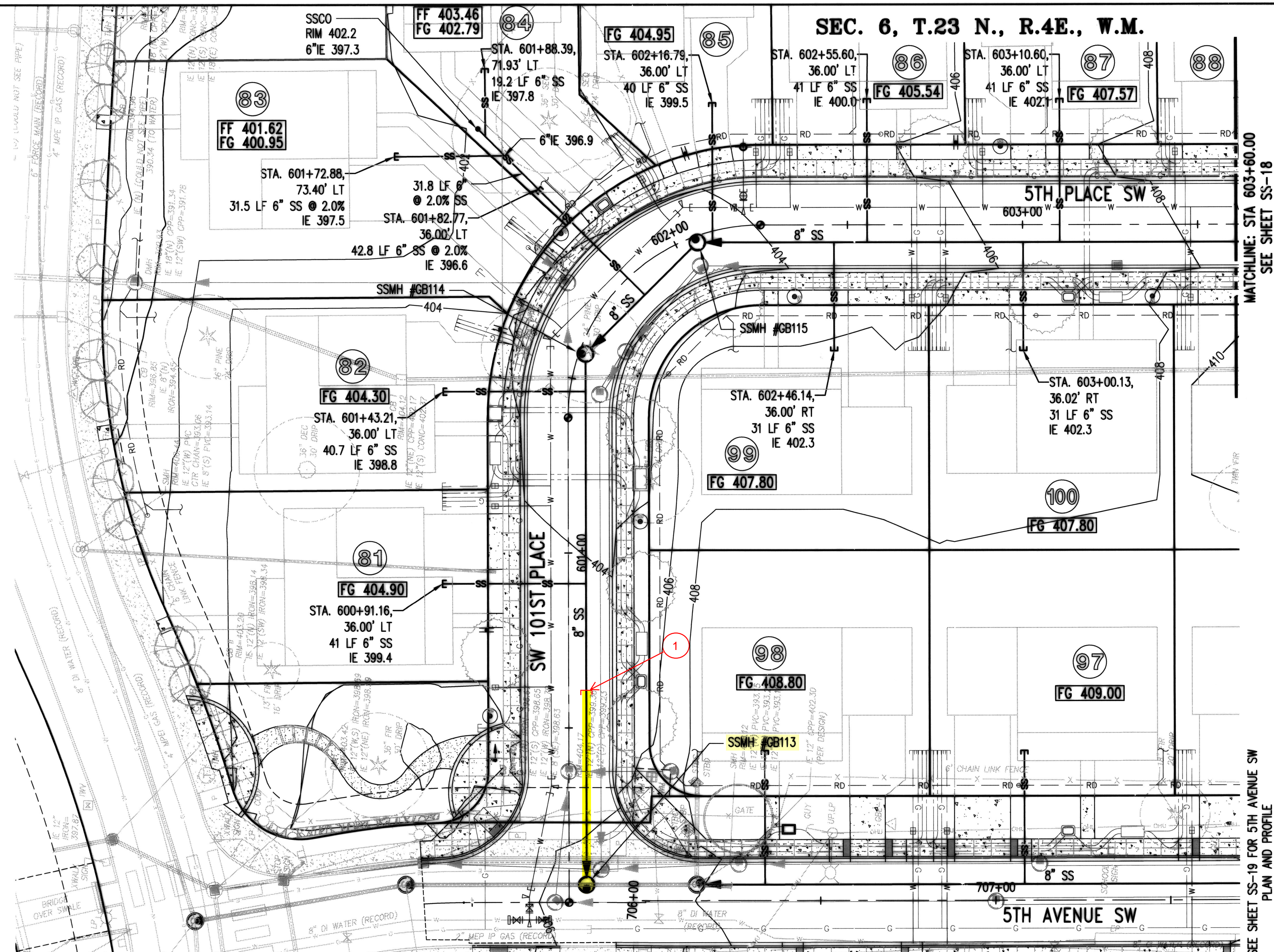
APPROVED: *R. R. Schule*  
DATE: 1-15-2019



KEY MAP  
NTS

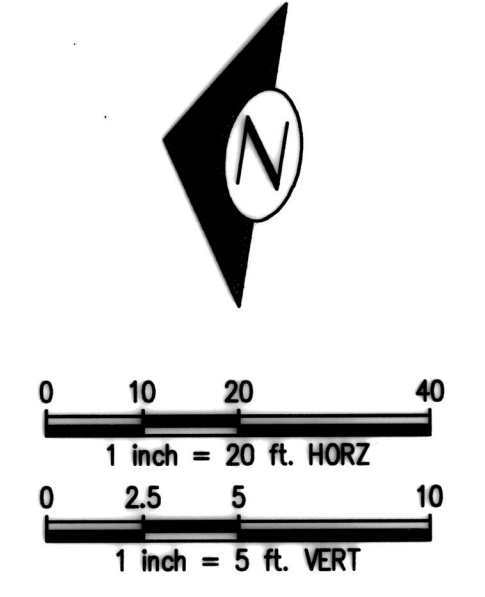
705+83.97, 63.96' LT

- 1 STA 600+85, 5' RT.
- 1- 8" CAP
- 1- 2"x 4" MARKER AT STUB PER PROJECT SPECIFICATIONS



RECORD DRAWINGS

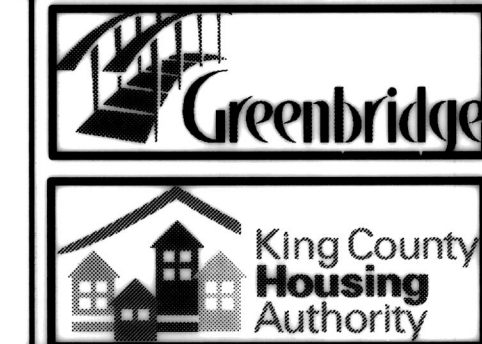
THESE AS-BUILT DOCUMENTS HAVE BEEN PREPARED FROM THE CONTRACTOR'S REDLINED MARK-UPS OF THE CONSTRUCTION RECORDS. THE ENGINEER REVIEWING THESE RECORD DRAWINGS HAS NOT WITNESSED ALL OF THE ELEMENTS OF CONSTRUCTION AND IS NOT RESPONSIBLE FOR ERRORS OR OMISSIONS IN DATA OR CERTIFY THE ACCURACY OF THE INFORMATION PROVIDED BY THE CONTRACTOR'S AS-BUILT REDLINES.



Nov 20, 2018 - 2:23pm  
Z:\1600001-1600000 (Construction)\CAD\Design Development\SSD\14-CB SS 17 ROAD E-N.dwg

NO.	DATE	BY	CHD.	APPR.	REVISION
4	09/13/21	BJB	JCG	JF	FINAL CORRECTED PLANS - PHASE 1
3	11/20/18	BJB	BJB	MAV	MYLAR SUBMITTAL
2	10/31/17	BJB	BJB	AGC	REVISED PER SWSSD COMMENTS
1	4/5/17	BJB	BJB	AGC	ORIGINAL SUBMITTAL

DRAWN BY: BJB, TAD  
DESIGNED BY: BJB  
CHECKED BY: BJB  
APPROVED BY: AGC  
DATE: NOVEMBER 20, 2018  
JOB No.: 1600206



**KING COUNTY HOUSING AUTHORITY**  
WHITE CENTER, WASHINGTON

**GREENBRIDGE DIVISION 8**

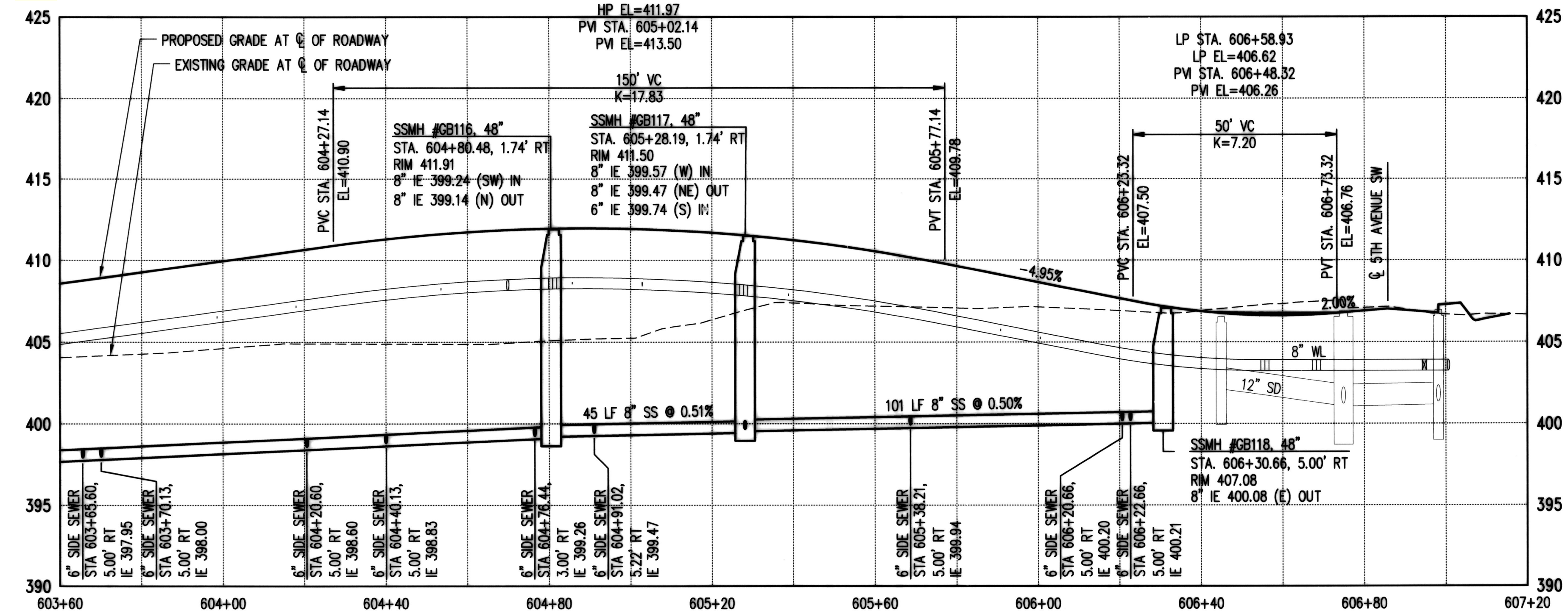
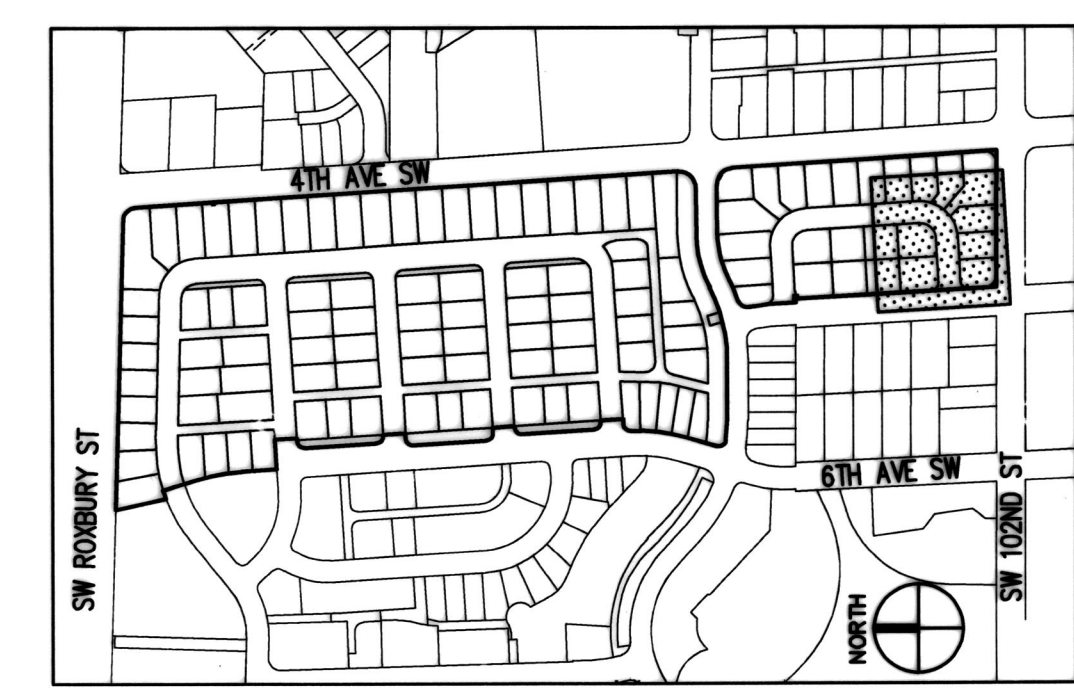
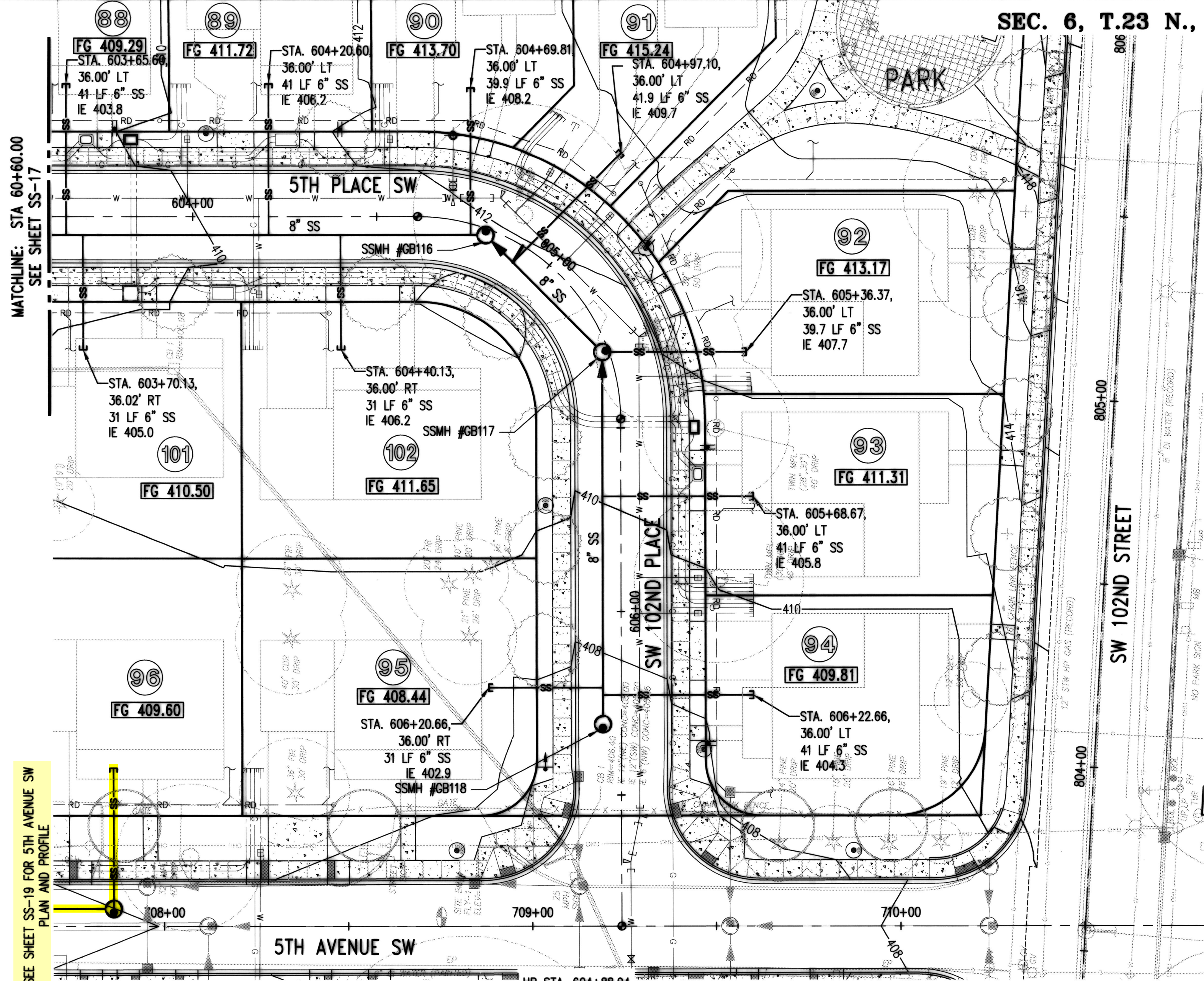
SW 101ST PLACE AND 5TH PLACE SW PLAN AND PROFILE

SHEET  
**S-17**

SEC. 6, T.23 N., R.4E., W.M.

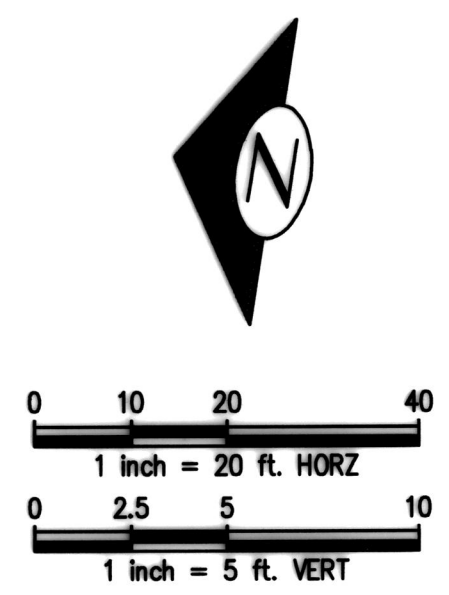
SOUTHWEST SUBURBAN SEWER DISTRICT  
RECORD DRAWINGS

APPROVED *M. Patel, Schude*  
DATE 1-15-2019



**RECORD DRAWINGS**

THESE AS-BUILT DOCUMENTS HAVE BEEN PREPARED FROM THE CONTRACTOR'S REDLINED MARK-UPS OF THE CONSTRUCTION DOCUMENTS. THE ENGINEER REVIEWING THESE RECORD DRAWINGS HAS NOT WITNESSED ALL OF THE ELEMENTS OF CONSTRUCTION AND IS NOT RESPONSIBLE FOR ERRORS OR OMISSIONS IN DATA OR CERTIFY THE ACCURACY OF THE INFORMATION PROVIDED BY THE CONTRACTOR'S AS-BUILT REDLINES.



Nov 20, 2018 2:24pm Z:\160001-1600099\1600206 (Greenbridge) (CAD) (Design) (2 - Design Development) (SSD) 14-08 SS 17 ROAD E-M.dwg

NO.	DATE	BY	CHD.	APPR.	REVISION
4	09/13/21	BJB	JCG	JF	FINAL CORRECTED PLANS - PHASE 1
3	11/20/18	BJB	BJB	MAV	MYLAR SUBMITTAL
2	10/31/17	BJB	BJB	AGC	REVISED PER SWSSD COMMENTS
1	4/5/17	BJB	BJB	AGC	ORIGINAL SUBMITTAL

DRAWN BY BJB, TAD  
DESIGNED BY BJB  
CHECKED BY BJB  
APPROVED BY AGC  
DATE NOVEMBER 20, 2018  
JOB No.: 1600206



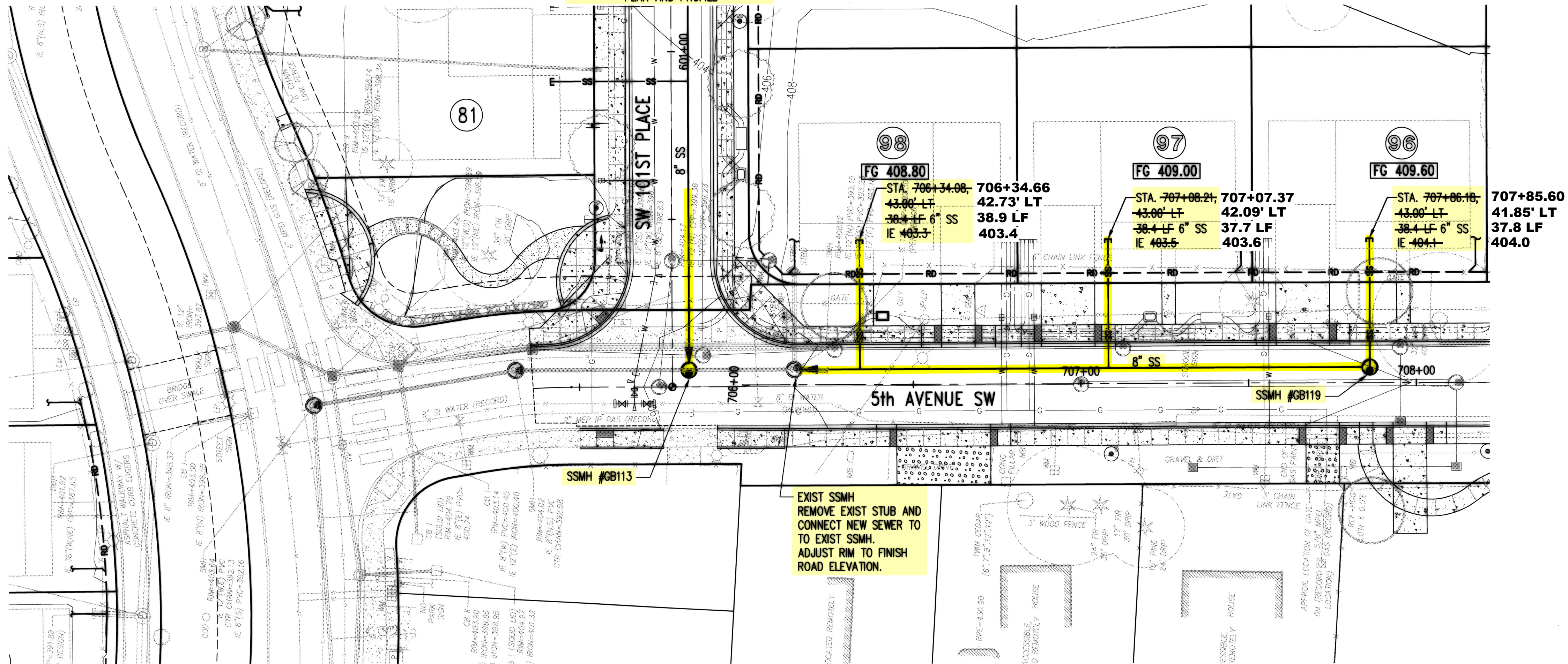
**KING COUNTY HOUSING AUTHORITY**  
WHITE CENTER, WASHINGTON  
**GREENBRIDGE DIVISION 8**

5TH PLACE SW AND SW 102ND PLACE PLAN AND PROFILE

SHEET  
**SS-18**

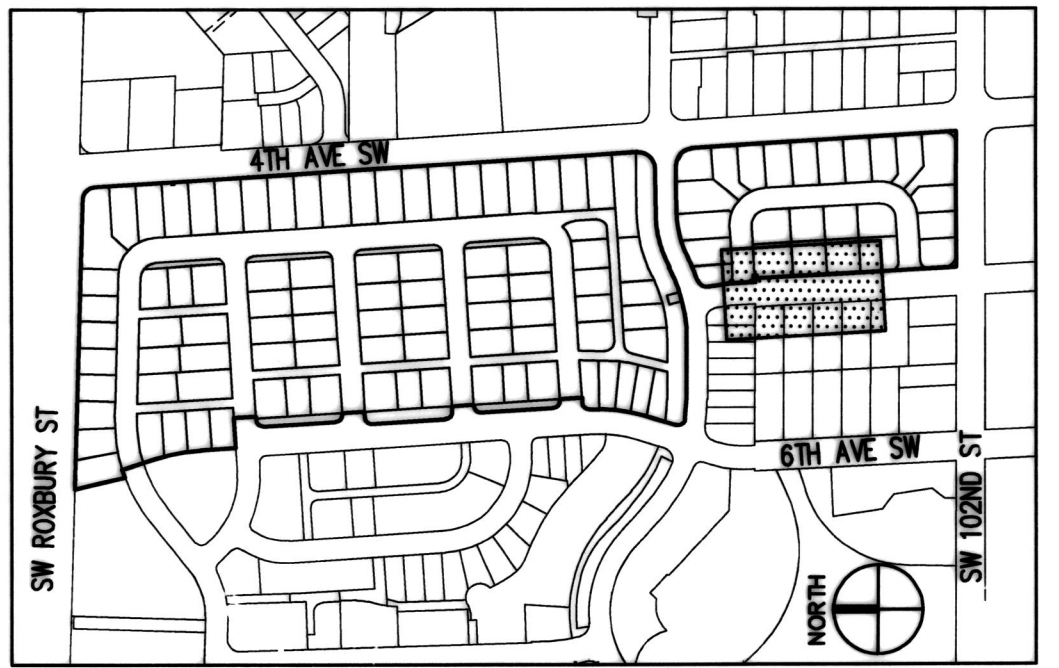
SEC. 6, T.23 N., R.4E., W.M.

SEE SHEET SS-17 FOR SW 101ST PLACE  
PLAN AND PROFILE

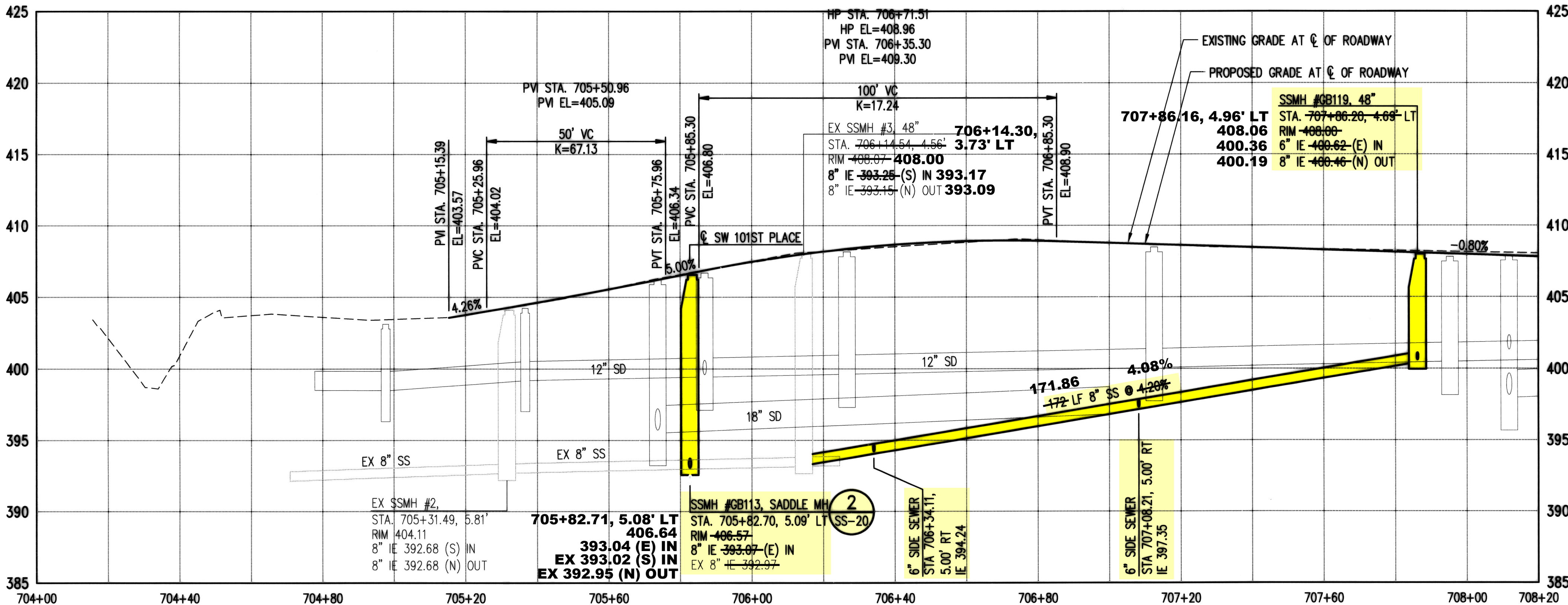


SOUTHWEST SUBURBAN SEWER DISTRICT  
RECORD DRAWINGS

APPROVED \_\_\_\_\_  
DATE \_\_\_\_\_

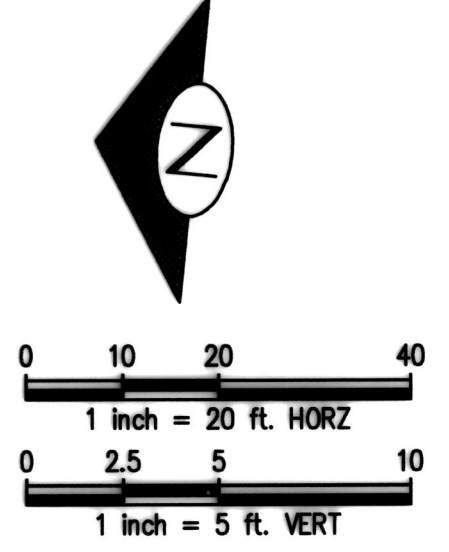


KEY MAP  
NTS



**RECORD DRAWINGS**

THESE AS-BUILT DOCUMENTS HAVE BEEN PREPARED FROM THE CONTRACTOR'S REDLINED MARK-UPS OF THE CONSTRUCTION DOCUMENTS. THE ENGINEER REVIEWING THESE RECORD DRAWINGS HAS NOT WITNESSED ALL OF THE ELEMENTS OF CONSTRUCTION AND IS NOT RESPONSIBLE FOR ERRORS OR OMISSIONS IN DATA OR CERTIFY THE ACCURACY OF THE INFORMATION PROVIDED BY THE CONTRACTOR'S AS-BUILT REDLINES.



Nov 20, 2018 - 2:29pm  
Z:\1600001-1600099 (Greenbridge) CAD (Design) (2-Design Development) (SSD) 15-08 SS 19 5TH AVE SW.dwg  
brand

NO.	DATE	BY	CHD.	APPR.	REVISION
4	09/13/21	BJB	JCG	JF	FINAL CORRECTED PLANS - PHASE 1
3	11/20/18	BJB	BJB	MAV	MYLAR SUBMITTAL
2	10/31/17	BJB	BJB	AGC	REVISED PER SWSSD COMMENTS
1	4/5/17	BJB	BJB	AGC	ORIGINAL SUBMITTAL

DRAWN BY BJB, TAD  
DESIGNED BY BJB  
CHECKED BY BJB  
APPROVED BY AGC  
DATE NOVEMBER 20, 2018  
JOB No.: 1600206

**Call 811**  
two business days before you dig

**kpff**  
1601 5th Avenue, Suite 1600  
Seattle, WA 98101  
206.622.5822  
www.kpff.com

**Greenbridge**  
King County Housing Authority



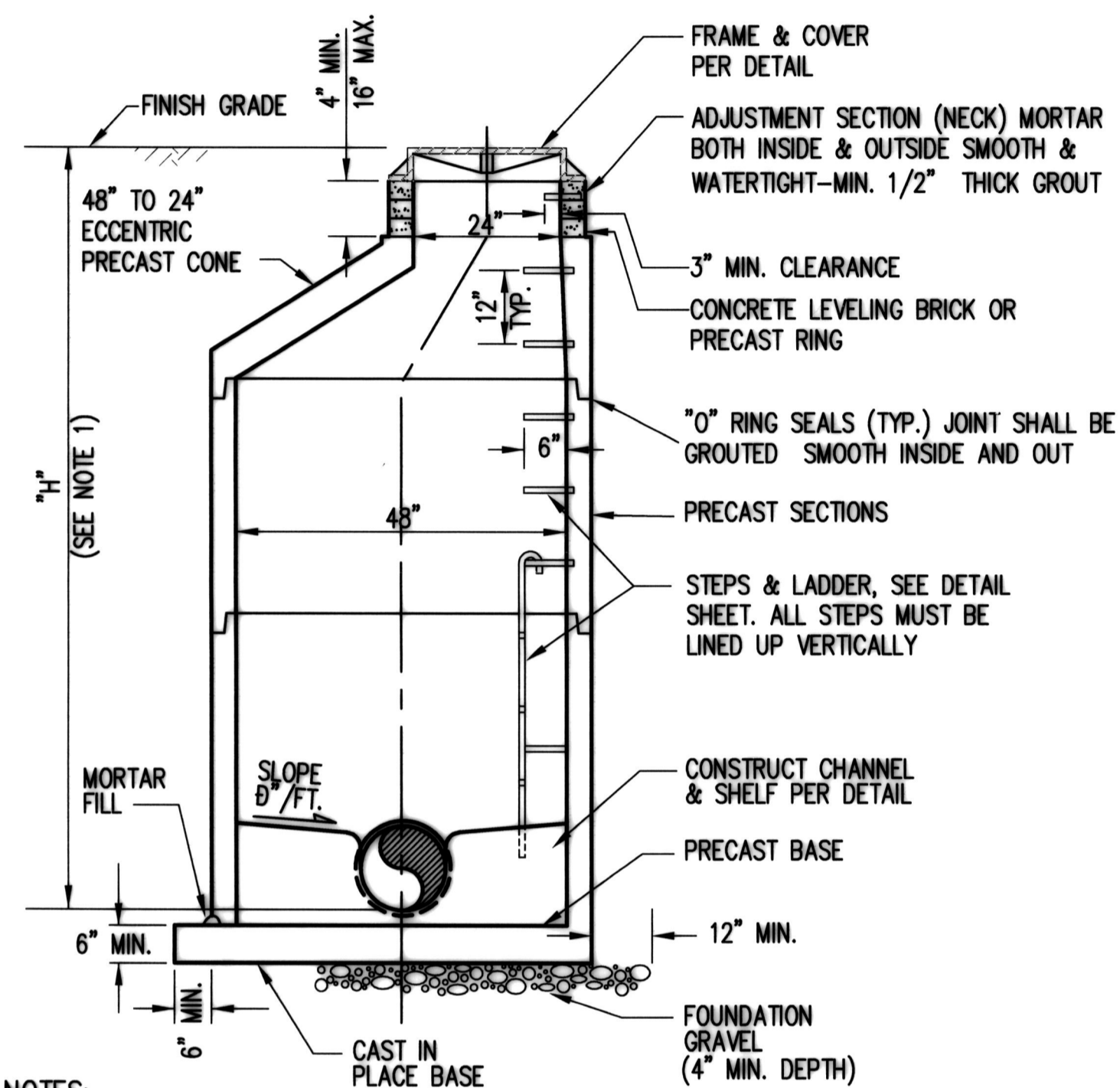
**KING COUNTY HOUSING AUTHORITY**  
WHITE CENTER, WASHINGTON  
**GREENBRIDGE DIVISION 8**  
5TH AVENUE SW PLAN AND PROFILE

SHEET  
**SS-19**

APPROVED *R. P. Schule*

DATE 1-15-2019

DATE

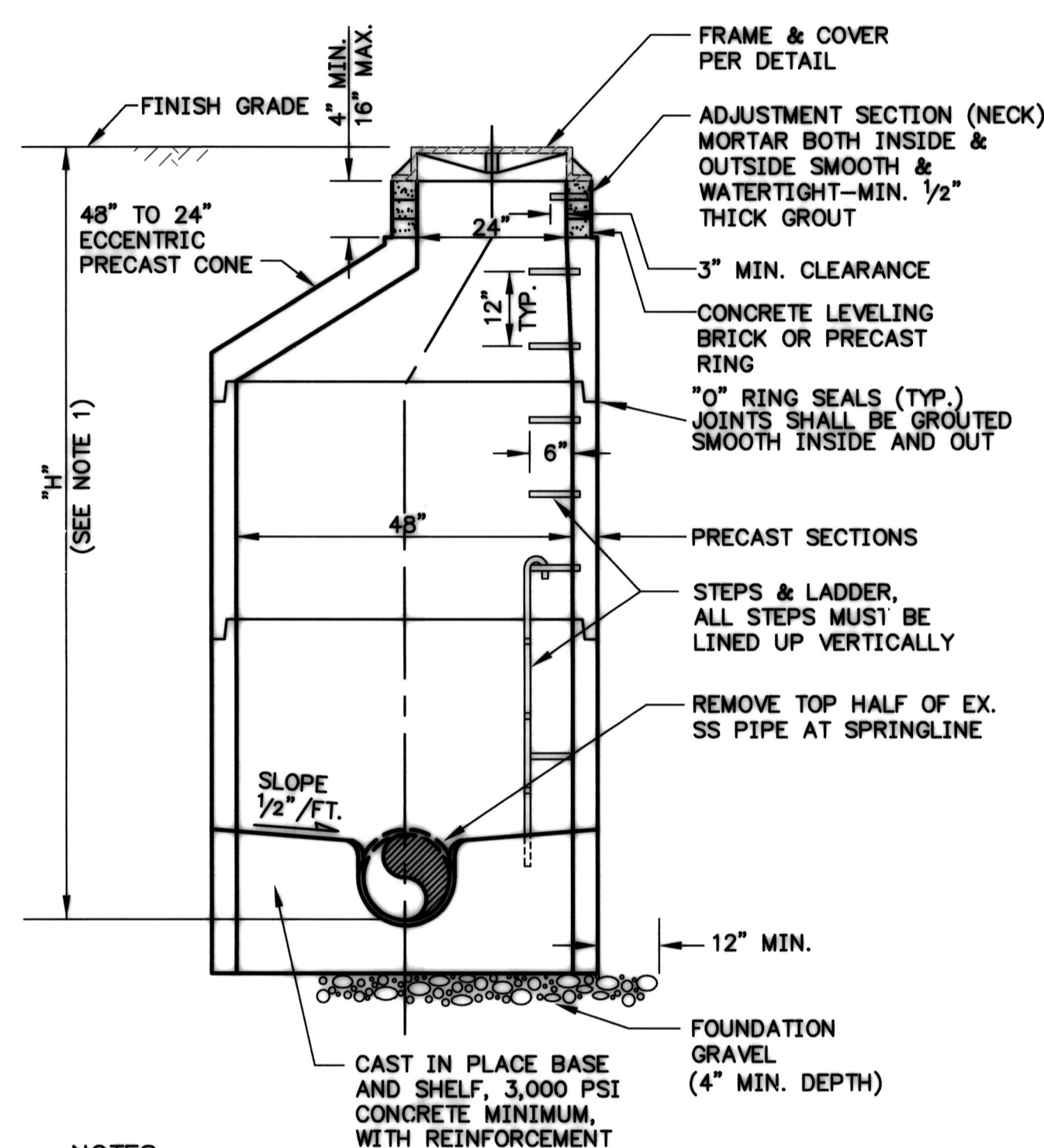


NOTES:

- WHEN "H" IS LESS THAN 5', USE TYPE IIIA-48" MANHOLE
- WALL OPENING REQUIREMENTS FOR PIPE:
  - HOLE SIZE TO EQUAL PIPE O.D. PLUS MANHOLE WALL THICKNESS
  - 8" MINIMUM BETWEEN HOLES
  - MAXIMUM PIPE SIZE 12"
  - PIPE MANHOLE COLLAR REQUIRED FOR PVC PIPE
- EXTERNAL MANHOLE JOINTS SHALL BE COMPLETELY ENCAPSULATED WITH A 1 FOOT WIDE STRIP OF "BEST SEAL WRAP" OR EQUAL AS APPROVED BY DISTRICT.

**TYPE 1 - 48" MANHOLE**

STANDARD MANHOLE DETAIL  
SOUTHWEST SUBURBAN SEWER DISTRICT

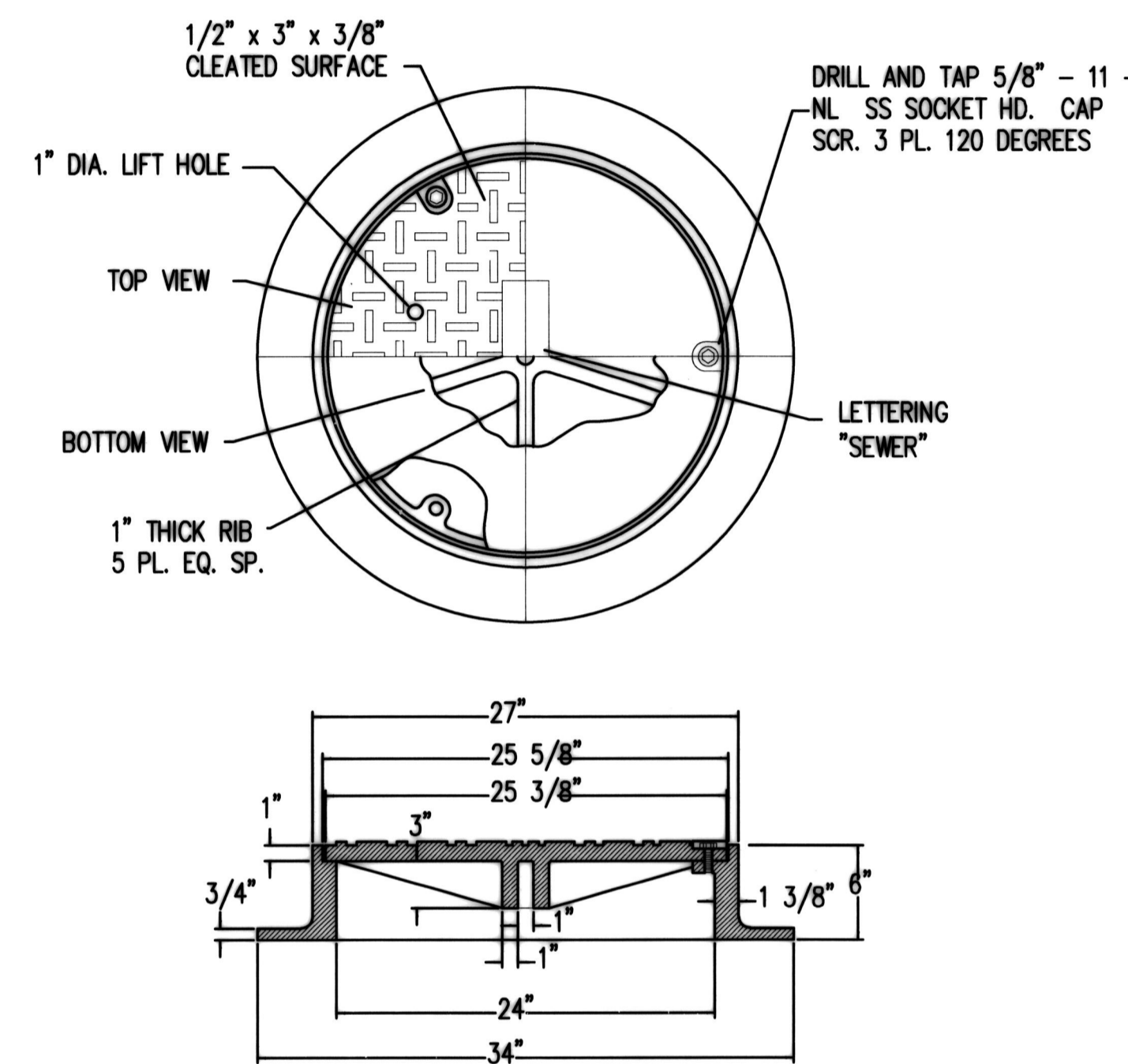


NOTES:

- WHEN "H" IS LESS THAN 5', USE TYPE IIIA-48" MANHOLE
- ADDITIONAL WALL OPENING REQUIREMENTS:
  - HOLE SIZE TO EQUAL PIPE O.D. PLUS MANHOLE WALL THICKNESS
  - 8" MINIMUM BETWEEN HOLES
  - MAXIMUM PIPE SIZE 12"
  - PIPE MANHOLE COLLAR REQUIRED FOR PVC PIPE
- SHELF TO HAVE SMOOTH PLASTER FINISH MEETING FLUSH WITH EX. SS PIPE.
- EXTERNAL MANHOLE JOINTS SHALL BE COMPLETELY ENCAPSULATED WITH A 1 FOOT WIDE STRIP OF "BEST SEAL WRAP" OR EQUAL AS APPROVED BY DISTRICT.

**TYPE 1 SADDLE MANHOLE**

SOUTHWEST SUBURBAN SEWER DISTRICT

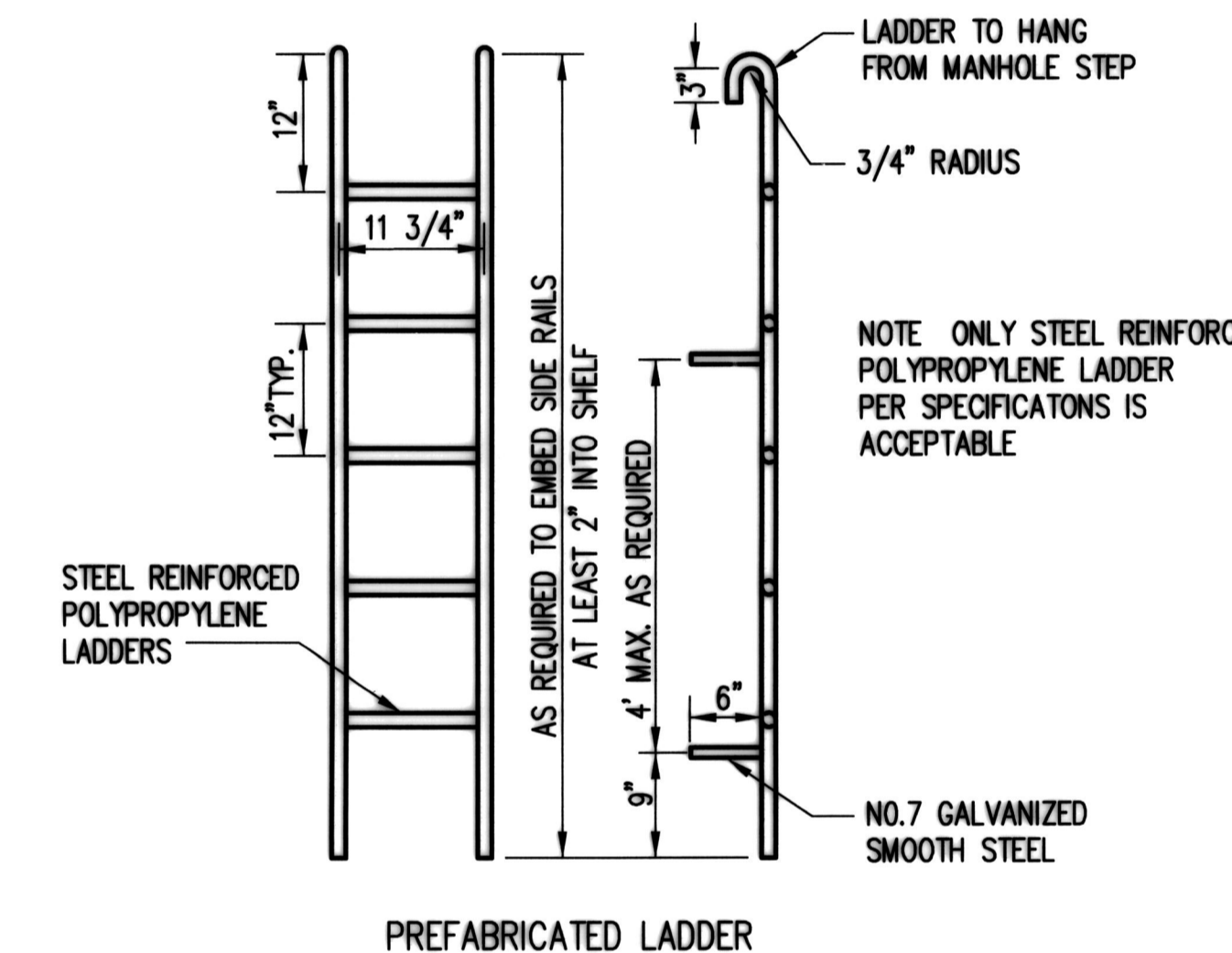
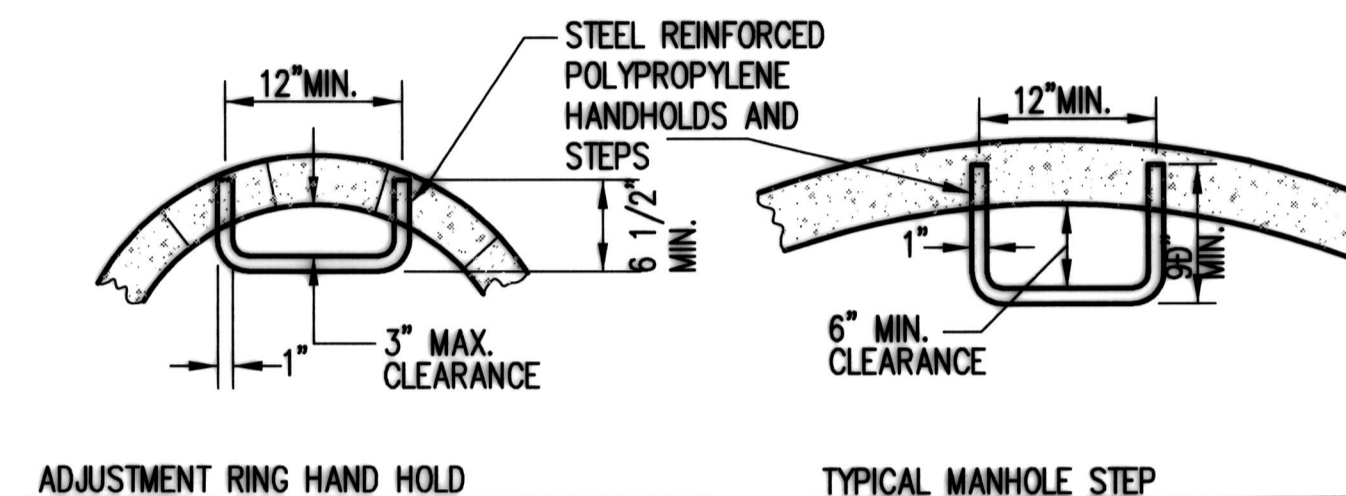


NOTES:

- ALL FRAMES AND COVERS SHALL BE OLYMPIC FOUNDRY INC. MH 36 D/T OR EQUAL.
- DRILL LUG HOLES FULL DEPTH.
- FRAMES WITH OVER BORED HOLES AND WASHERS ON CAP SCREWS TO HOLD DOWN LID NOT ACCEPTABLE.
- PROVIDE 3/4" x 6" CARRIAGE BOLT AND NUT AND WASHERS FOR LIFT HOLE. 5. SEE SPECIFICATION 02605 FOR ADDITIONAL REQUIREMENTS.

**MANHOLE FRAME AND COVER**

SOUTHWEST SUBURBAN SEWER DISTRICT



**MANHOLE STEPS AND LADDER**

SOUTHWEST SUBURBAN SEWER DISTRICT



RECORD DRAWINGS

THESE AS-BUILT DOCUMENTS HAVE BEEN PREPARED FROM THE CONTRACTOR'S REDLINED MARK-UPS OF THE CONSTRUCTION DOCUMENTS. THE ENGINEER REVIEWING THESE RECORD DRAWINGS HAS NOT WITNESSED ALL OF THE ELEMENTS OF CONSTRUCTION AND IS NOT RESPONSIBLE FOR ERRORS OR OMISSIONS IN DATA OR CERTIFY THE ACCURACY OF THE INFORMATION PROVIDED BY THE CONTRACTOR'S AS-BUILT REDLINES.

Z:\1600001-1600001 (Greenbridge) (CAD) (Design Development) (SSD) 16-08 SS 20 DTLSS.dwg Nov 20, 2018 - 2:27pm brcab

NO.	DATE	BY	CHD.	APPR.	REVISION
4	09/13/21	BJB	JCG	JF	FINAL CORRECTED PLANS - PHASE 1
3	11/20/18	BJB	BJB	MAV	MYLAR SUBMITTAL
2	10/31/17	BJB	BJB	AGC	REVISED PER SWSD COMMENTS
1	4/5/17	BJB	BJB	AGC	ORIGINAL SUBMITTAL

DRAWN BY BJB, TAD	DESIGNED BY BJB
CHECKED BY BJB	APPROVED BY AGC
DATE NOVEMBER 20, 2018	
JOB No.: 1600206	

**811 Call 811**  
two business days before you dig

**SCALE:**  
AS NOTED

**kpff**  
1601 5th Avenue, Suite 1600  
Seattle, WA 98101  
206.522.5822  
www.kpff.com

**Greenbridge**

**King County Housing Authority**

**ALICIA S. PERDIS**  
LICENSED PROFESSIONAL ENGINEER  
NO. 38847

**KING COUNTY HOUSING AUTHORITY**  
WHITE CENTER, WASHINGTON

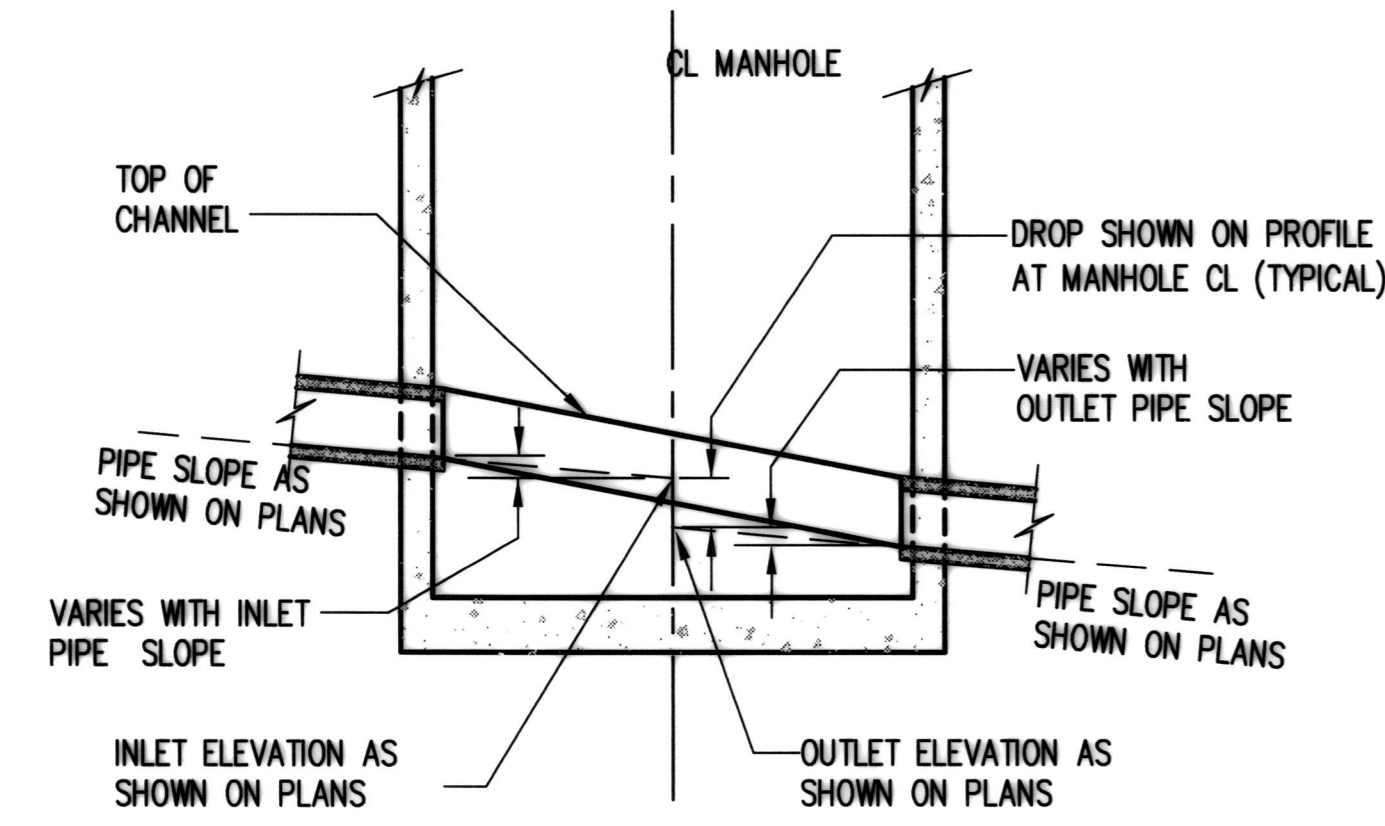
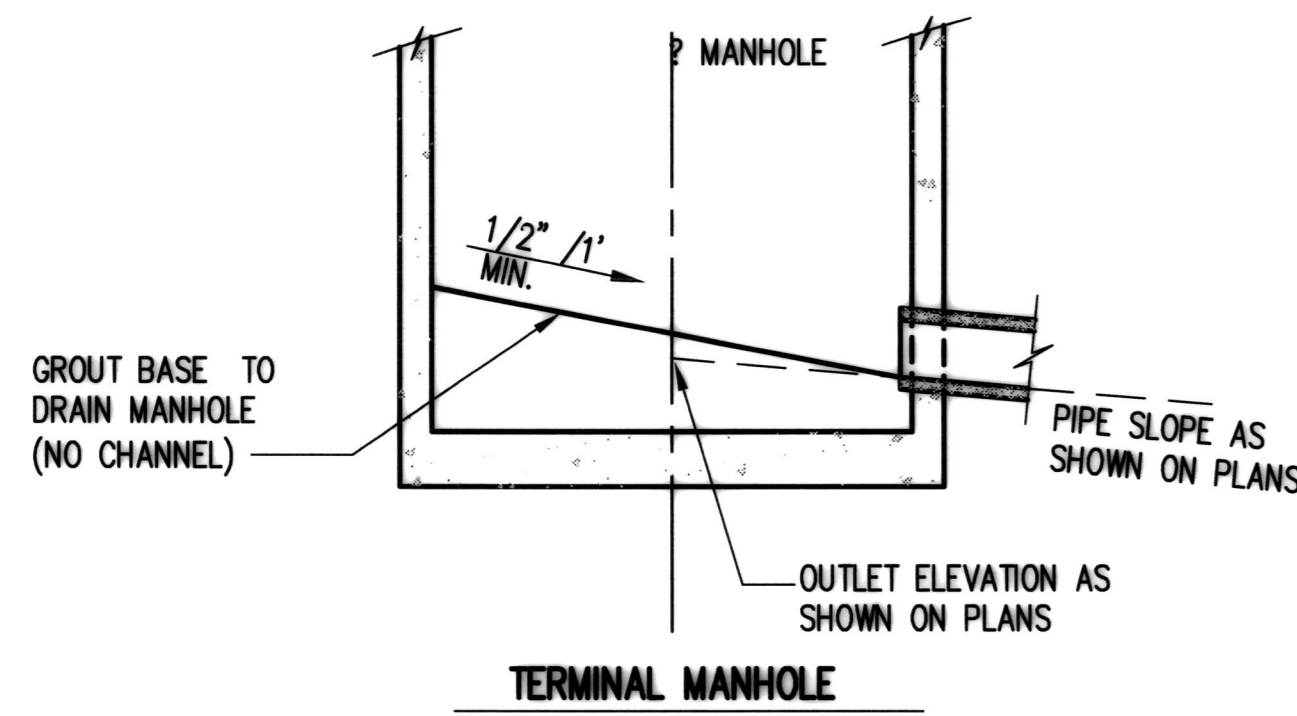
**GREENBRIDGE DIVISION 8**

**SANITARY SEWER DETAILS**

SHEET

**SS-20**

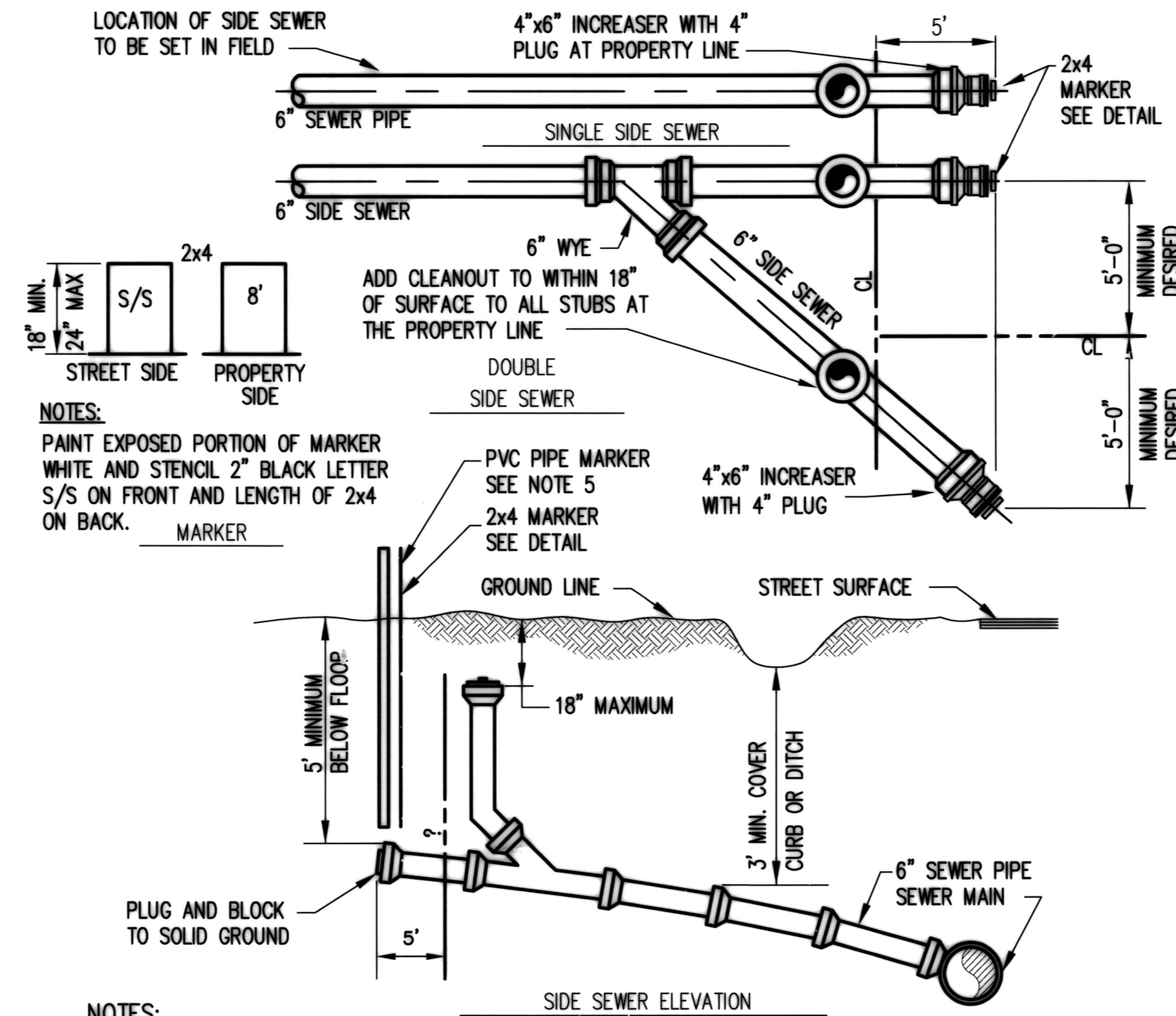
APPROVED: *Ritch Schule*  
DATE: 1-23-2019



NOTE: CONSTRUCT CHANNEL AND SHELF IN FIELD. SHELF AND CHANNEL TO HAVE PLASTER SMOOTH FINISH. CHANNEL TO BE FULL DIAMETER AND DEPTH OF PIPE.

**MANHOLE CHANNELING**  
SOUTHWEST SUBURBAN SEWER DISTRICT

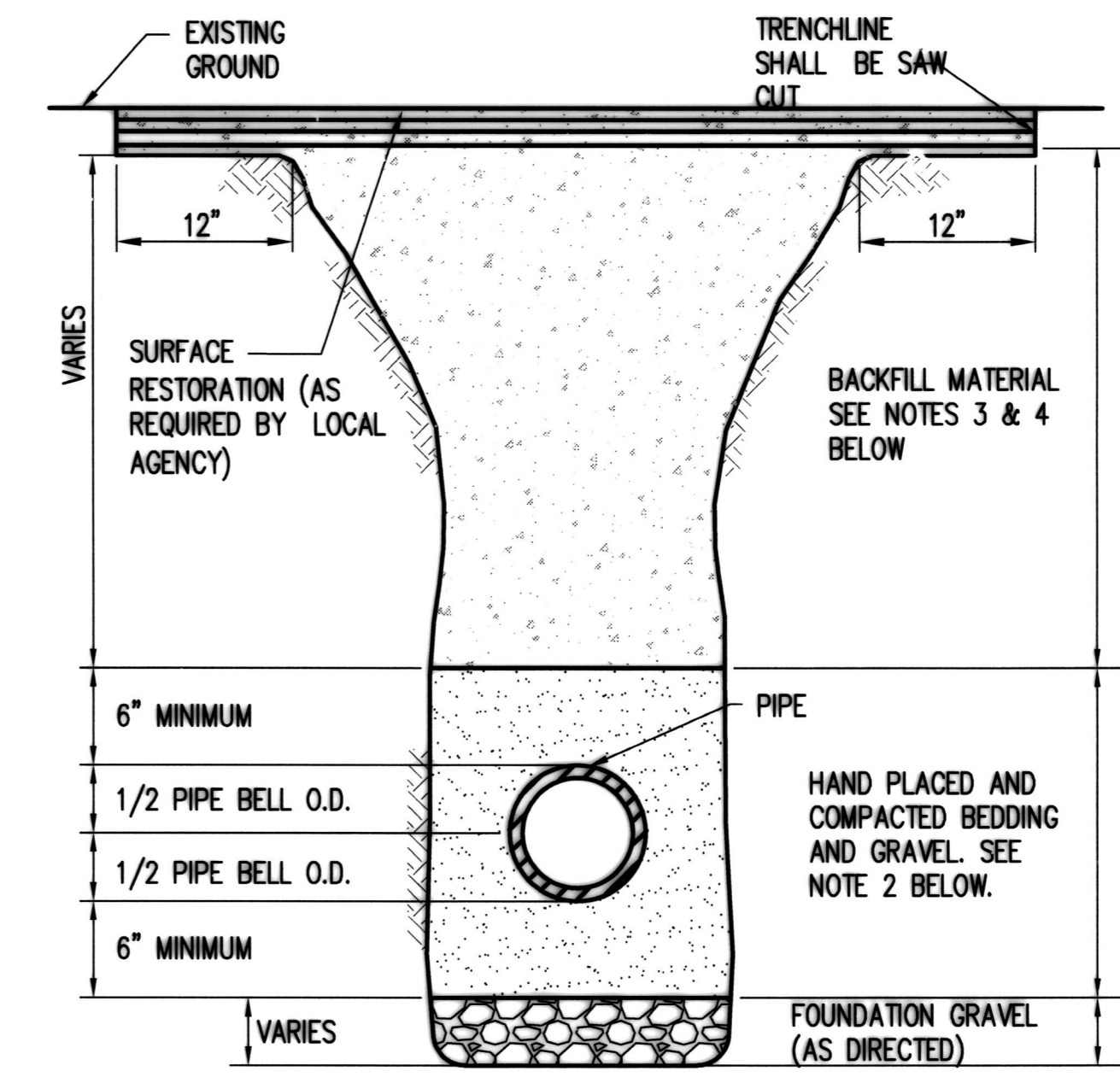
8



- NOTES:**
- UNLESS OTHERWISE SHOWN ON PLAN, SIDE SEWER SHALL BE SLOPED 2% UP FROM SEWER LINE OR SHALL BE MIN. 5' COVER AT PROPERTY LINE OR 3.5' LOWER THAN THE LOWEST HOUSE ELEVATION, WHICHEVER IS LOWER.
  - 6" MINIMUM SIZE PIPE TO PROPERTY LINE. MAXIMUM DEFLECTION PER JOINT IN ACCORDANCE WITH MANUFACTURER'S RECOMMENDATIONS.
  - MAXIMUM SLOPE = 2 VERTICAL : 1 HORIZONTAL.
  - MINIMUM SLOPE = 2%
  - A 1 1/4" WHITE PVC PIPE, ASTM 2241 SDR 21 200 PSI SHALL BE PLACED VERTICALLY AT THE END OF EACH STUB AND SHALL RISE TWO FEET ABOVE FINISH GRADE LEVEL OR AS APPROVED BY SWSSD. BOTH ENDS OF THE PVC PIPE SHALL HAVE CAPS GLUED ON AND THE PIPE INTERIOR KEPT CLEAN FOR THE PURPOSE OF FUTURE DEPTH MEASUREMENT.
  - PIPE SHALL BE PVC ASTM D3034.

**STREET SIDE SEWER**  
SOUTHWEST SUBURBAN SEWER DISTRICT

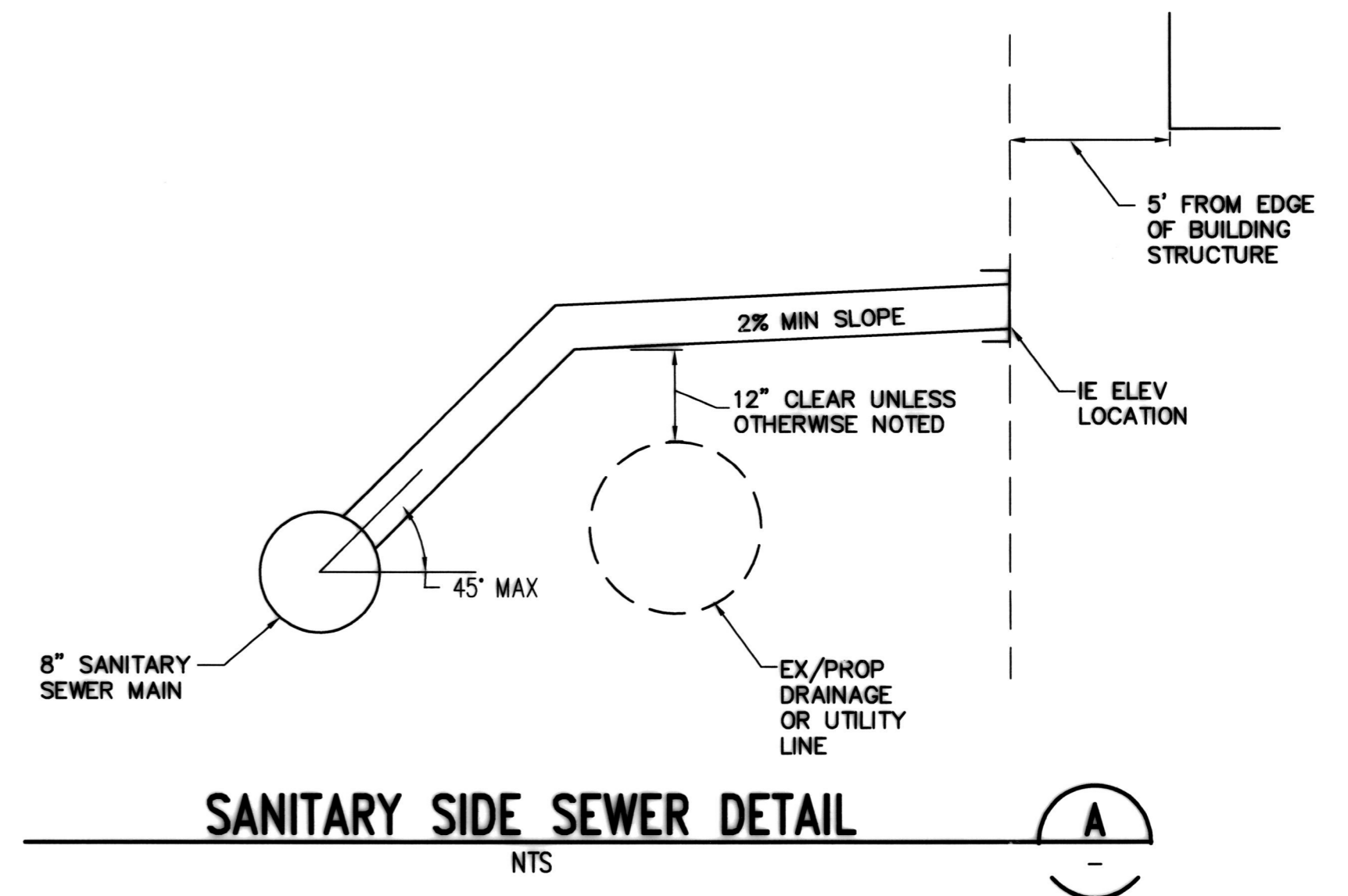
10



- NOTES:**
- MINIMUM TRENCH WIDTH SHALL BE: PIPE O.D.+12" (6" ON EACH SIDE OF PIPE). MAXIMUM TRENCH WIDTH SHALL BE: 40" FOR PIPE 18" DIAMETER AND SMALLER (1/2xI.D.)+18" FOR PIPE LARGER THAN 18"
  - BEDDING GRAVEL SHALL BE PLACED A MINIMUM OF 6" BELOW AND A MINIMUM OF 6" ABOVE THE PIPE. SEE PROJECT SPECIFICATIONS FOR BEDDING GRAVEL GRADUATION.
  - BACKFILL MATERIAL SHALL CONSIST OF IMPORTED GRAVEL MATERIAL AS REQUIRED OR DIRECTED. SEE PROJECT SPECIFICATIONS FOR GRADATION. CONTRACTOR SHALL TEST COMPACTION AS LEAST ONCE PER EVERY 300' TO ENSURE 95% COMPACTION.
  - CDF MAY BE REQUIRED IN ALL PAVED AREAS.
  - TRENCH SECTIONS SHALL BE CONSTRUCTED IN ACCORDANCE WITH THE RIGHT-OF-WAY PERMIT.
  - IF USING NON-METALLIC PIPE, METALLIC LOCATOR TAPE SHALL BE BURIED 18"-24" ABOVE THE SEWER PIPE. TAPE SHALL READ "CAUTION - BURIED SEWER LINE BELOW".

**TYPICAL TRENCH SECTION**  
SOUTHWEST SUBURBAN SEWER DISTRICT

15



**SANITARY SIDE SEWER DETAIL**  
NTS

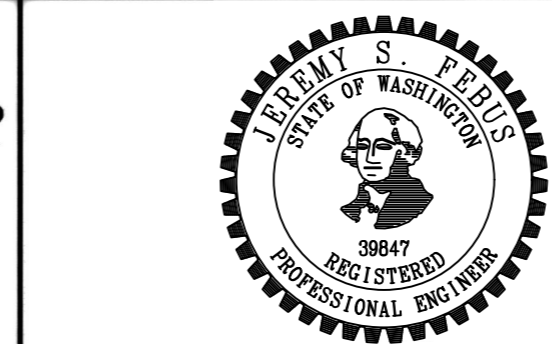
A

**RECORD DRAWINGS**

THESE AS-BUILT DOCUMENTS HAVE BEEN PREPARED FROM THE CONTRACTOR'S REDLINED MARK-UPS OF THE CONSTRUCTION DOCUMENTS. THE ENGINEER REVIEWING THESE RECORD DRAWINGS HAS NOT WITNESSED ALL OF THE ELEMENTS OF CONSTRUCTION AND IS NOT RESPONSIBLE FOR ERRORS OR OMISSIONS IN DATA OR CERTIFY THE ACCURACY OF THE INFORMATION PROVIDED BY THE CONTRACTOR'S AS-BUILT REDLINES.

NO.	DATE	BY	CHD.	APPR.	REVISION
4	09/13/21	BJB	JCG	JF	FINAL CORRECTED PLANS - PHASE 1
3	11/20/18	BJB	BJB	MAV	MYLAR SUBMITTAL
2	10/31/17	BJB	BJB	AGC	REVISED PER SWSSD COMMENTS
1	4/5/17	BJB	BJB	AGC	ORIGINAL SUBMITTAL

DRAWN BY: BJB, TAD  
DESIGNED BY: BJB  
CHECKED BY: BJB  
APPROVED BY: AGC  
DATE: NOVEMBER 20, 2018  
J O B No. : 1600206



**KING COUNTY HOUSING AUTHORITY**  
WHITE CENTER, WASHINGTON  
**GREENBRIDGE DIVISION 8**  
**SANITARY SEWER DETAILS**

SHEET  
**SS-21**

Nov 20, 2018 - 2:27pm  
Z:\1600001-1600006 (Cambridge) (CAD) (Design Development) (SSD) (16-08 SS 20 DTL) (DWG)  
briand