

ADDENDUM:

1

TODAY'S DATE:

06.02.23

PROJECT NAME: Glenview Heights Exterior Upgrades

CONTACT / TITLE: Amy Kurtz

PROJECT MANAGER

PHONE / EMAIL: 206.574.1283

AmyK@kcha.org

This Addendum is used to Identify Items in the Original Documents with Action as Follows:

☒ **BID**

☐ **RFQ**

☐ **RFP**

☒ **CLARIFY**

☒ **CHANGE**

☒ **DELETE**

☒ **ADD**

☐ **SUBSTITUTE**

8

Page(s) Total for this Addenda including this page.

CLARIFY

Existing interior base trim removed for door installation, to be replaced with flat stock base trim to match door from corner of wall to door both directions.

CHANGE

Specification Section 122116 Window Coverings- with "12116 ADDENDUM #1"

Door 002- (A402 Door Legend #2)

Change door legend with new drawing labeled 002. Add integrated blinds to all 002 doors.

Door 004 (A103, A203, A402)

Change swing from RH to LH. Location of wall infill to be opposite of what drawings show.

Door 005 (A103)

Change to read door 006 (Laundry room door)

DELETE

A5/A301 (Privacy Wall) – REPLACE WITH ASK-01 DETAIL

ADD:

ADD: Contractor responsible for reconnecting all attic vents.

ADD: Detail for Eve Condition Typ and Nickel Gap Siding and trim detail

ADD: Electrical Page E001 "For Reference Only"

ADD: Contractor to verify all door swings with KCHA prior to ordering.



PART 1 GENERAL

1.1 SUMMARY

- A. Section includes vertical slat louver blinds at windows and operating hardware.

1.2 REFERENCES

- A. Reference Standards: Editions current as of date of Project Manual.

1.3 SUBMITTALS

- A. Product Data:
 - 1. Description and specifications for components, features and assembly.
 - 2. Opening size limitations, method of attachment and operation specific to work of this Section.
 - 3. Backing requirements and method of attachment.
- B. Manufacturer's Instructions:
 - 1. Installation requirements, tolerances and clearances required for installation.
 - 2. Installation for different openings and mounting substrates.
- C. Samples:
 - 1. One (1) sixteen (16") inch wide fully functional vertical headrail.
 - 2. Manufacturer's complete fabric and color selection on actual material.
 - 3. Manufacturer's color selection for exposed metal components.

1.4 QUALITY ASSURANCE

- A. Installer:
 - 1. Specializing in fabricating and installing work of this Section.
 - 2. Able to document minimum three (3) years' experience for projects of equivalent or greater scope and quality.
 - 3. Authorized as qualified to perform work of this Section by manufacturer.
- B. Field Verify: Opening sizes, method of attachment, operation, and interface with adjacent construction, tolerances, and clearances required for installation prior to fabrication.

1.5 DELIVERY, STORAGE AND HANDLING

- A. Conform to provisions of Section 01 60 00 and manufacturer's instructions.
- B. Deliver materials in manufacturer's protective packaging with manufacturer's product identification clearly labeled.
- C. Store materials in dry area maintained at building's operating temperature and humidity.

1.6 PROJECT CONDITIONS

- A. Building: Fully enclosed, with wet and dust-creating work complete and dry, environmental controls in place, maintaining temperatures between 60 and 90 degrees F, and relative humidity maintained at maximum eight (80%) percent.

1.7 WARRANTY

- A. Manufacturer:
 - 1. Standard Lifetime Warranty for headrail including operating components.
 - 2. Standard three (3) year Warranty for fabrics.

ADDENDUM #1

PART 2 PRODUCTS

2.1 MANUFACTURERS

- A. Vertical blinds:
1. Graber,
 2. Hunter Douglas,
 3. Levolor Inc,
 4. Or accepted equal.

2.2 VERTICAL BLINDS AT WINDOWS

- A. Headrail:
1. Basis of Design: Graber Super-Vue (G-71).
 2. Include covered end caps.
- B. Carrier: Track and carriage traversing system on self-lubricating wheels.
- C. Wand: Pultruded fiberglass to rotate louvers and transverse louvers. Include clutch to prevent damage from over-rotation.
- D. Vertical blinds:
1. Solid PVC louvers.
 2. Color: White.
 3. Stain and fade resistant.
 4. Not less than 3/8-inch overlap when vanes are rotated fully closed.
 5. Nominal 3 1/2-inch width.
 6. Weighted at bottom. **Chains not accepted.**
- E. Wall and ceiling mounts as applicable to installation. Zinc-plated, heat-treated spring steel. Provide brackets at ends and at intervals as instructed by manufacturer.
- F. Fasteners: Corrosion-resistant, coated to match metal components and as instructed by manufacturer.

2.3 FABRICATION

- A. Fabricate blinds to fill each opening completely from jamb to jamb and from head to sill.
- B. Determine sizes by field measurement.
- C. Locate blind divisions at mullions and perimeter framed openings.

PART 3 EXECUTION

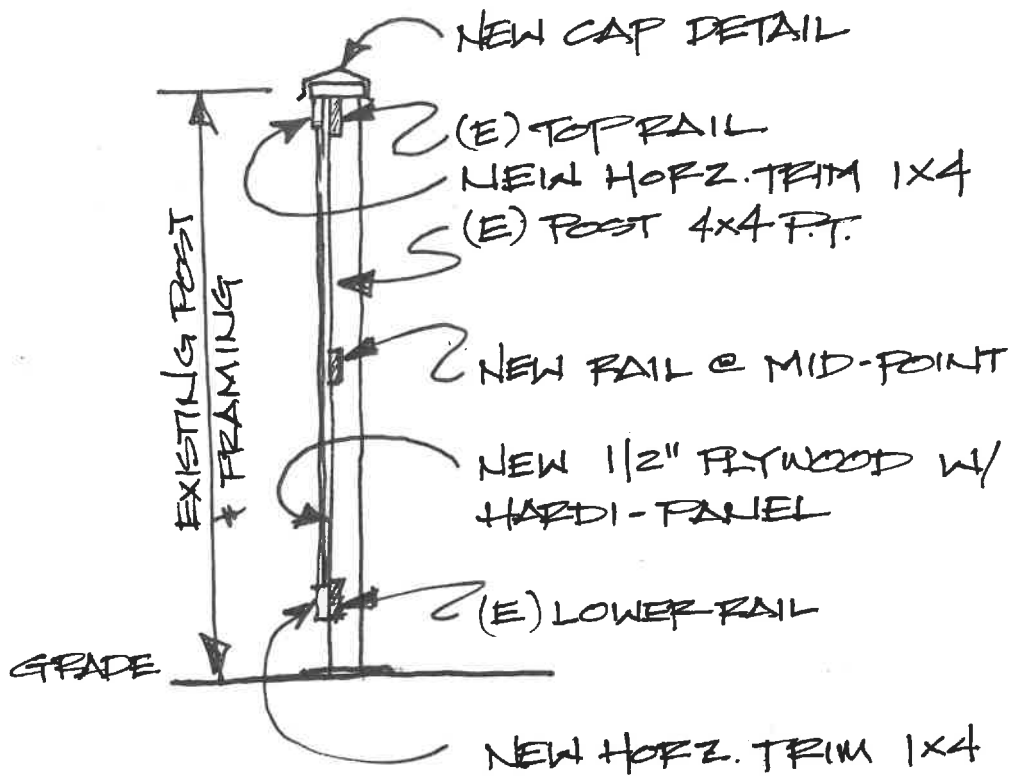
3.1 INSTALLATION

- A. Conform to manufacturer's installation instructions and provisions of Contract Documents.
- B. Install with sufficient brackets to prevent deflection of headrail.
- C. Located and adjust to be plumb, level.
- D. Allow for necessary clearances for operating hardware.

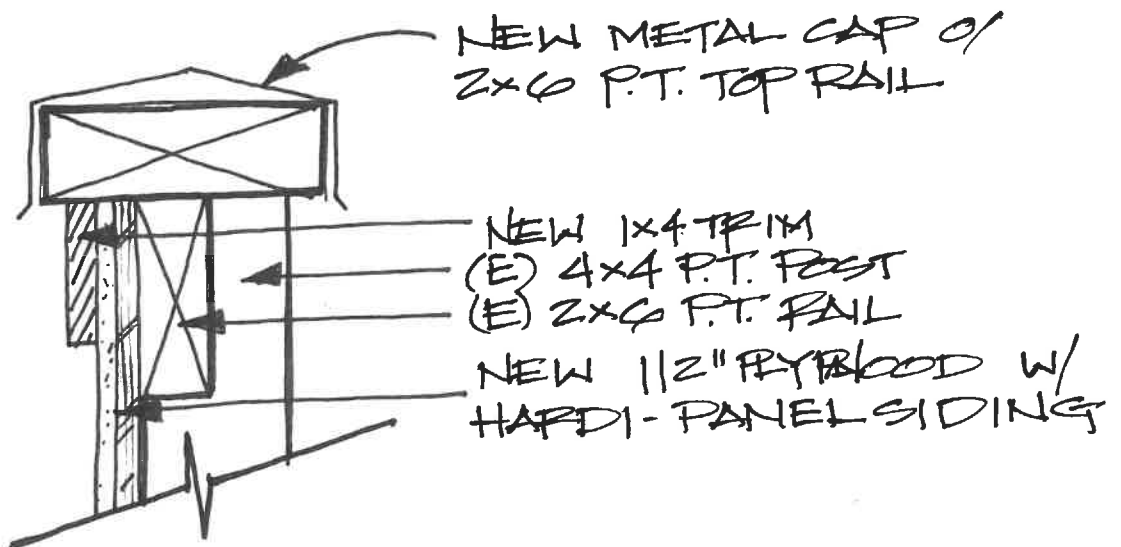
3.2 ADJUSTING

- A. Adjust blinds for smooth operation.
- B. Replace defective and damaged units.

END OF SECTION

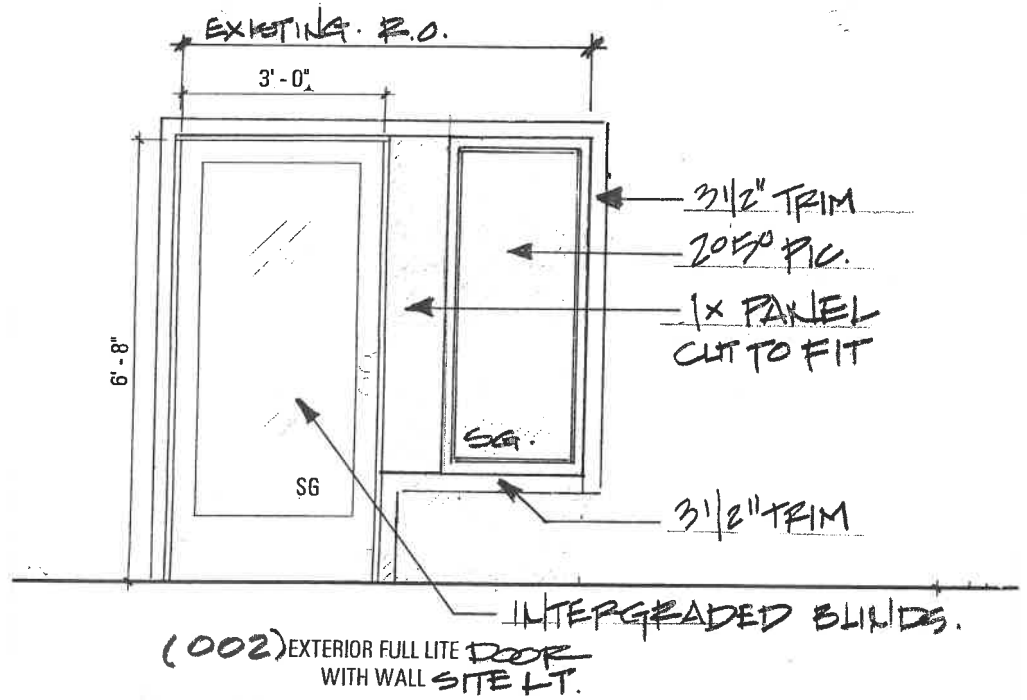


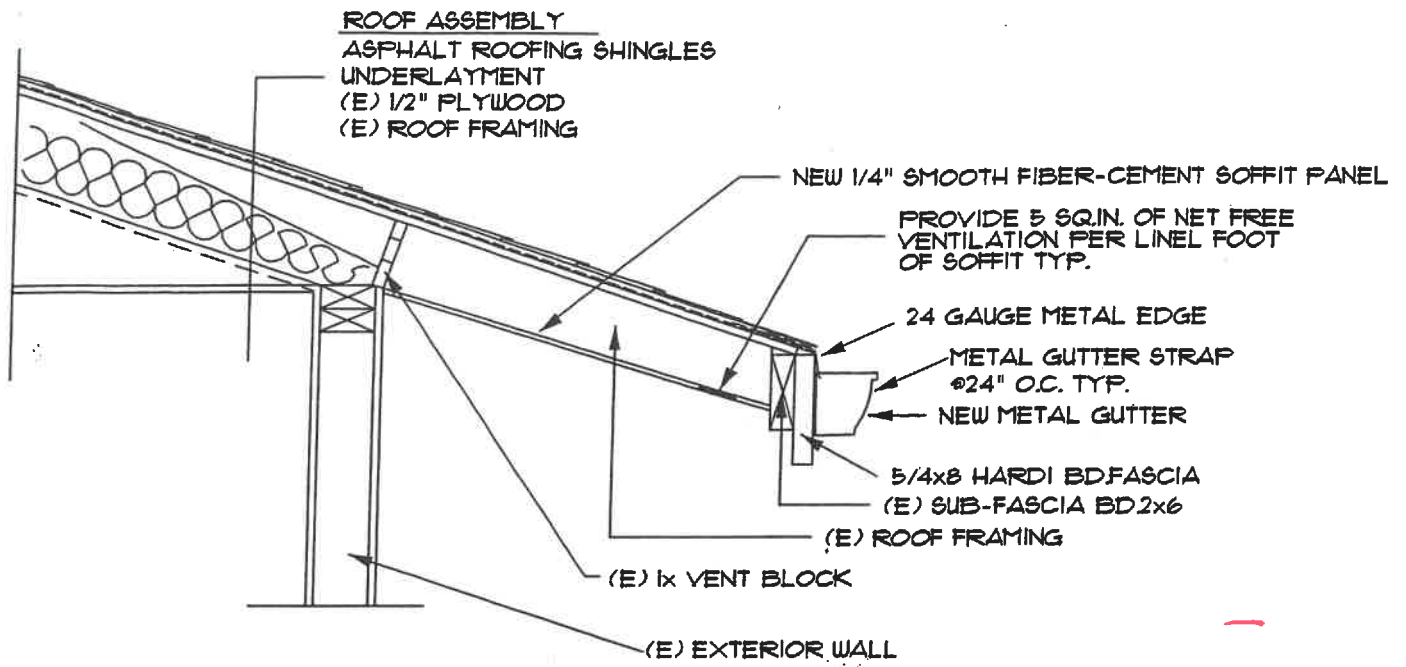
RAIL / POST DETAIL NTS.



RAIL CAP DETAIL NTS

ASK-01



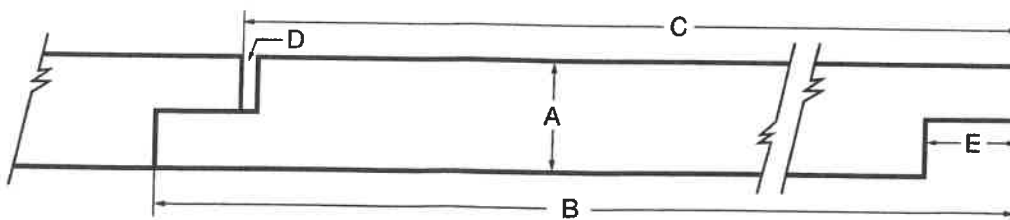


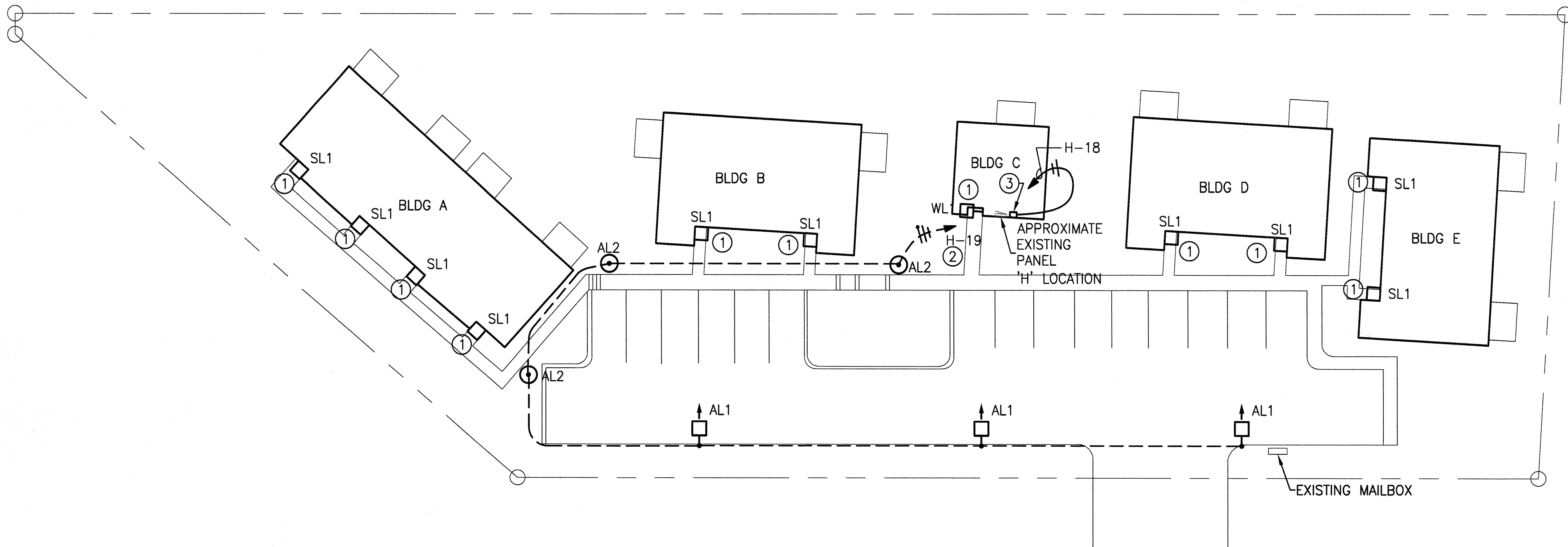
EAVE CONDITION TYP.

TruExterior Siding & Trim

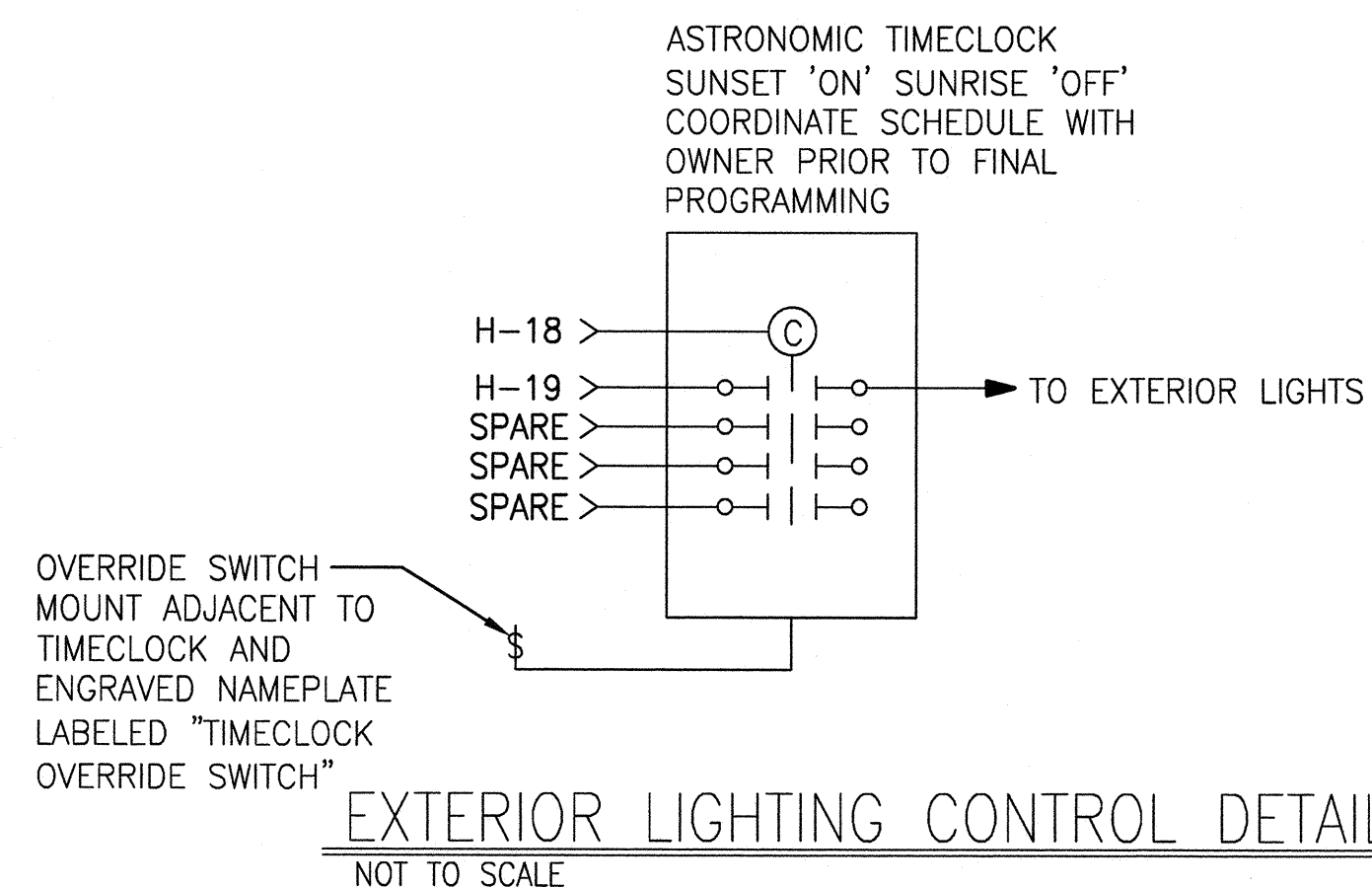
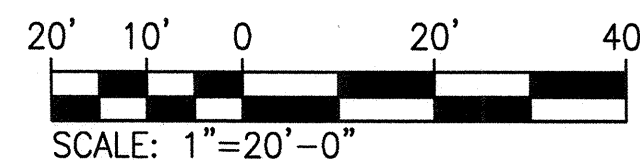
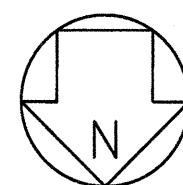
Nickel Gap Side

Nominal Size ◆	Actual Thickness (A) ◆	Actual Width (B) ◆	Reveal (C) ◆	Gap (D) ◆	Tongue (E) ◆
1x4	11/16"	3-1/2"	3-5/64"	5/64"	13/32"
1x6	11/16"	5-1/2"	5-5/64"	5/64"	13/32"
1x8	11/16"	7-1/4"	6-53/64"	5/64"	13/32"
1x10	11/16"	9-1/4"	8-53/64"	5/64"	13/32"





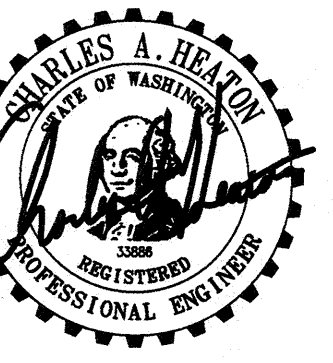
1 ELECTRICAL SITE PLAN
SCALE: 1"= 20'-0"



FOR REFERENCE ONLY



bce engineers, inc.
p: (253) 922-0446
f: (253) 922-0896
6021 12th street east, suite 200, fife, wa 98424



REUSE OF DOCUMENTS
ALL MATERIAL HEREIN CONSTITUTES THE
ORIGINAL AND UNPUBLISHED WORK OF THE
ENGINEER AND MAY NOT BE USED, DUPLICATED
OR DISCLOSED WITHOUT THE WRITTEN CONSENT
OF THE ENGINEER. COPYRIGHT © 2007
BY BCE ENGINEERS, INC. ALL RIGHTS RESERVED.

GLENVIEW HEIGHTS
SITE LIGHTING
10405 S.E. 172nd St.,
Renton, WA 98055

ELECTRICAL SITE PLAN

DRAWN BY: SW/KH

CHECKED BY: CH

REVISIONS:

DRAWING No. of

E-100

DATE: 08-29-13
CONSTRUCTION
PROJECT No. 213-215

END OF ADDENDA # 1