



KCHA Board of Commissioners

- Jerry Lee, Chair
- Richard Jackson
- Neal Black
- Tina Keys
- Regina Elmi

President/CEO — Robin Walls

INVITATION TO BID

Asphalt Replacement
at Multiple Locations

April 8, 2026

ADDENDUM NO. 1

This addendum is used to clarify, change, delete, add to or substitute items in the original contract documents.

BID DATE: April 15, 2026, at 11:00 am

QUESTIONS DEADLINE: Wednesday, April 8, 2026, by 9:00 am

NUMBER OF PAGES: 3

ATTACHMENTS: 2 Updated Maps

CONTRACT NUMBER: AW2600531

NOTICE TO BIDDERS: Bidders are hereby notified of the following changes and/or clarifications to the Contract Documents for this project.

CHANGES:

1. WOODSITE EAST ESTIMATED SQUARE FOOTAGE:
 - A. 14,300sf has changed to 8,500sf. (see Attachment 1)
2. CARRINGTON LAYOUT:
 - A. Location of new asphalt changed from parking along 145th PI SE to the corner of 148th AVE SE. (see Attachment #2)

QUESTIONS:

All other provisions of the Contract Documents remain unchanged.

END OF ADDENDUM NO. 1

Attachment 1

Mobilization	1
Square Feet	14,300sf 8,500sf (Addendum #1)
Wheel Stops	9
Speed Bump	1
Stripe Per Existing Design	
Demo Extruded Curb and do NOT reinstall	



DO NOT SCALE 

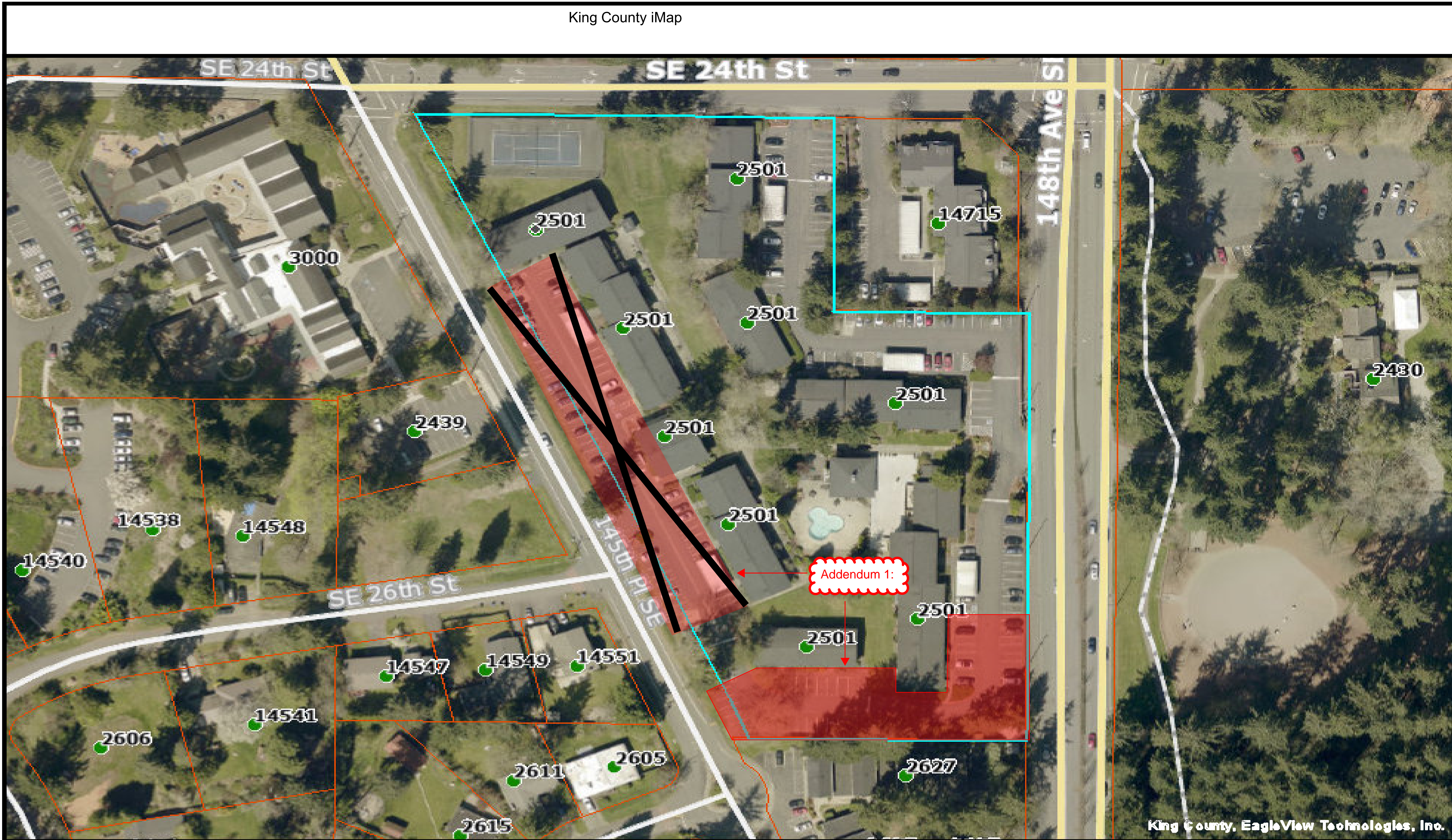
WOODSIDE EAST APARTMENTS
 16240 NE 14TH STREET, BELLEVUE, WA 98008
ASPHALT REPLACEMENT

Date: **March 22, 2023**
 Revisions:

Drawn: **Darrell Westlake**

SITE PLAN L9.0

King County iMap



King County, EagleView Technologies, Inc.

The information included on this map has been compiled by King County staff from a variety of sources and is subject to change without notice. King County makes no representations or warranties, express or implied, as to accuracy, completeness, timeliness, or rights to the use of such information. This document is not intended for use as a survey product. King County shall not be liable for any general, special, indirect, incidental, or consequential damages including, but not limited to, lost revenues or lost profits resulting from the use or misuse of the information contained on this map. Any sale of this map or information on this map is prohibited except by written permission of King County.

Date: 12/15/2023

Notes:



Mobilization	1
Square Feet	11,800sf
Wheel Stops	15
Speed Bump	1
Stripe As Is	
Demo Extruded Curb at Sidewalks and do NOT reinstall	

Do Not Scale

CARRINGTON APARTMENTS

2501 148TH AVE SE, BELLEVUE, WA 98007

ASPHALT PAVING

Date: JANUARY 3, 2024

Revisions:

Drawn: Darrell Westlake

PLAN A1.0