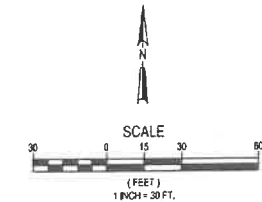
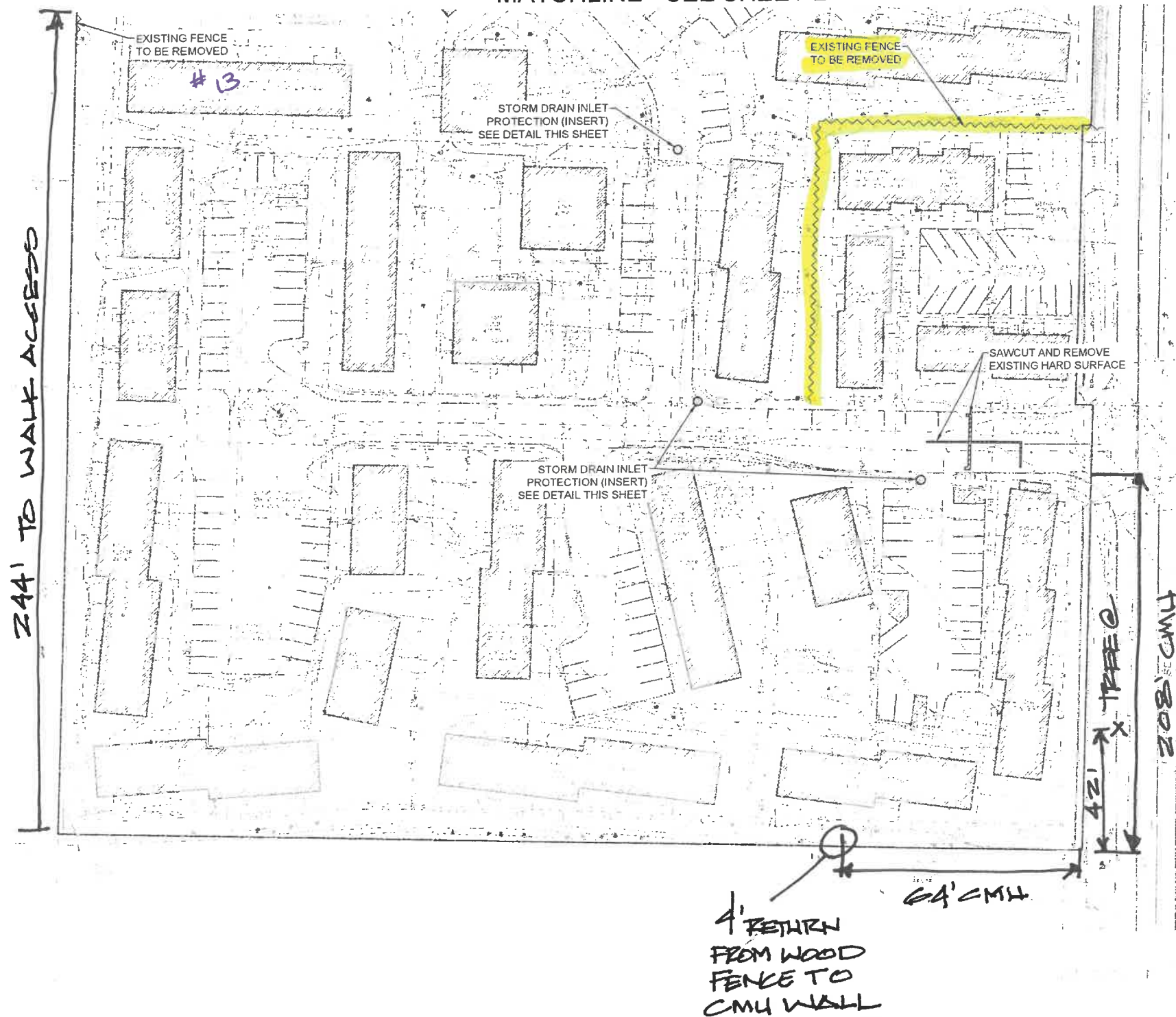


A PORTION OF THE NW 1/4 OF SW 1/4 SEC 17, TWP. 22N., RGE 05E., W.M.

MATCHLINE - SEE SHEET 2



DAVID EVANS AND ASSOCIATES INC.
 20300 Woodville Southampton Road NE
 Woodinville, WA 98072
 Phone 425.415.2000

VALLI KEE APARTMENTS - 23401 104TH AVENUE SE, KENT WA 98031
 FENCING PLANS

KING COUNTY HOUSING AUTHORITY
 TESC-DEMO PLAN

WASHINGTON

KENT

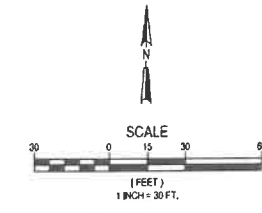


CAUTION
 LOCATION OF EXISTING UTILITIES SHOWN IS APPROXIMATE AND MAY NOT BE ACCURATE OR ALL INCLUSIVE. IT IS THE CONTRACTOR'S RESPONSIBILITY TO FIELD VERIFY LOCATION OF UTILITIES PRIOR TO PROCEEDING WITH CONSTRUCTION. YOU MUST CALL 1-800-424-5555 NOT LESS THAN TWO FULL BUSINESS DAYS BEFORE BEGINNING EXCAVATION WHERE ANY UNDERGROUND UTILITIES MAY BE LOCATED. EXISTING UTILITIES TO BE LOCATED, PROTECTED, AND REPAIRED IN ACCORDANCE WITH RCW 19.122.

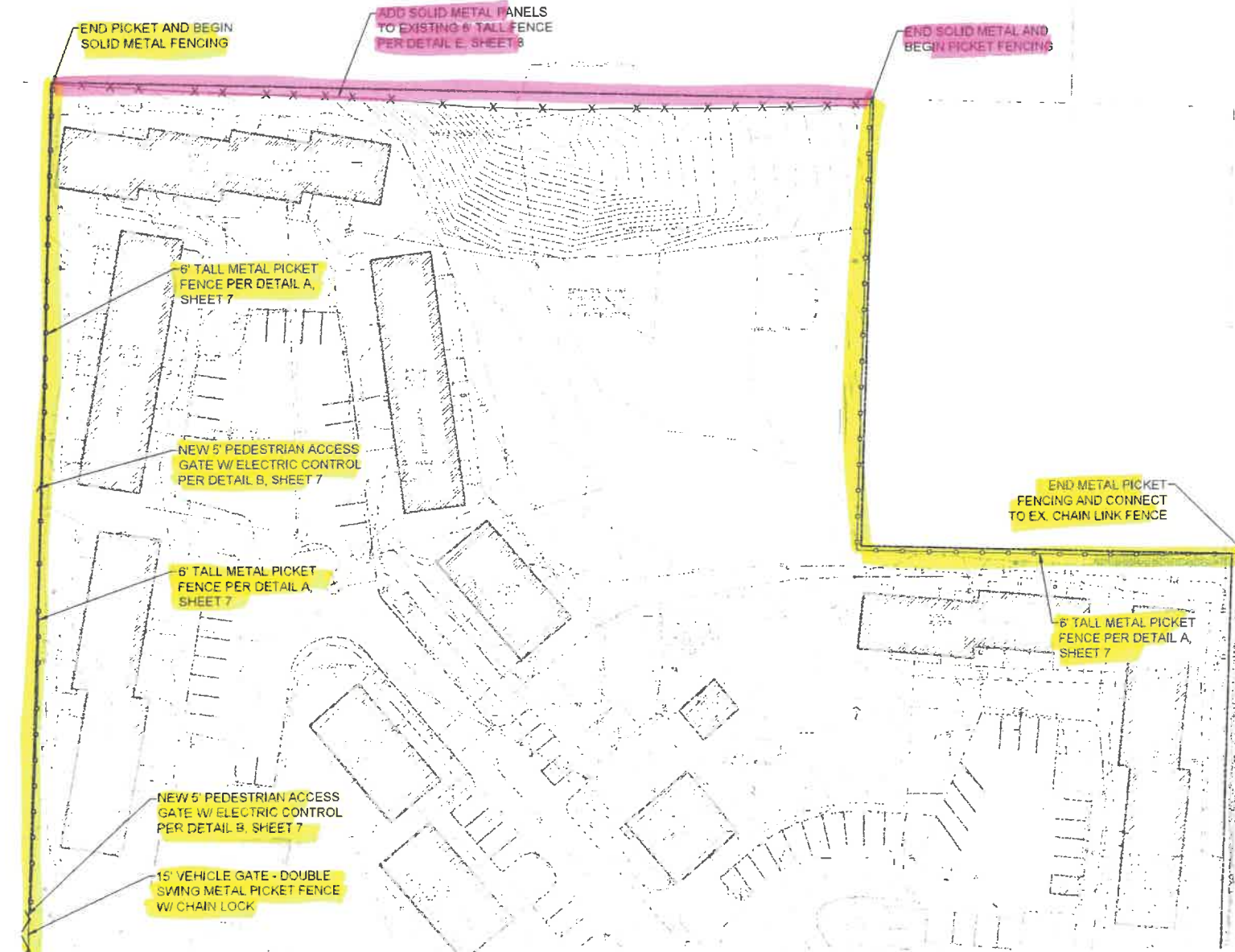
CHECKED BY: TWV
 DESIGNED BY: TWV
 DRAWN BY: MAR
 FIRST SUBMITAL DATE: 10/20/20
 PROJECT NO.: KCHA00006068
 SHEET NO.: 3 OF 8

Plot Date: 11/17/2023 12:42 PM
 Rev Date: 11/17/2023 11:07 AM
 By: Misha V. Williams
 D: Misha V. Williams
 File Path: P:\KCHA\00006068\KCHA00006068\DESIGN\KCHA00006068\TESC-DEMO\KCHA00006068.dwg

A PORTION OF THE NW 1/4 OF SW 1/4 SEC 17, TWP. 22N., RGE 05E., W.M.



DAVID EVANS AND ASSOCIATES INC.
20300 Woodville Station Road NE
Woodville, WA 98072
Phone 425.415.2000



MATCHLINE - SEE SHEET 5

PLT 016, 11/02/23 12:47 PM By: Malcom Williams
Saw Date: 11/02/23 11:12 AM By: Vira P. KWC:K:\A000000000\A000000000\KCHAS000000000.dwg

VALLI KEE APARTMENTS - 23401 104TH AVENUE SE, KENT WA 98031
FENCING PLANS
KING COUNTY HOUSING AUTHORITY
FENCING PLAN

REVIEWED BY	DATE	BY	CHK
NO			
DATE			
REVISION			

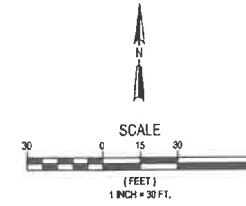
CHECKED BY: TWV
DESIGNED BY: TWV
DRAWN BY: MAM
FIRST SUBMITTAL DATE: 10/00/00
PROJECT NO.: KCHA00006068
SHEET NO.: 4 OF 8

CAUTION
LOCATION OF EXISTING UTILITIES SHOWN IS APPROXIMATE AND MAY NOT BE ACCURATE OR ALL INCLUSIVE. IT IS THE CONTRACTOR'S RESPONSIBILITY TO FIELD VERIFY LOCATION OF UTILITIES PRIOR TO PROCEEDING WITH CONSTRUCTION. YOU MUST CALL 1-800-424-5555 NOT LESS THAN TWO FULL BUSINESS DAYS BEFORE BEGINNING EXCAVATION WHERE ANY UNDERGROUND UTILITIES MAY BE LOCATED. EXISTING UTILITIES TO BE LOCATED, PROTECTED, AND REPAIRED IN ACCORDANCE WITH RCW 19.122

WASHINGTON

KENT

A PORTION OF THE NW 1/4 OF SW 1/4 SEC 17, TWP. 22N., RGE 05E., W.M.



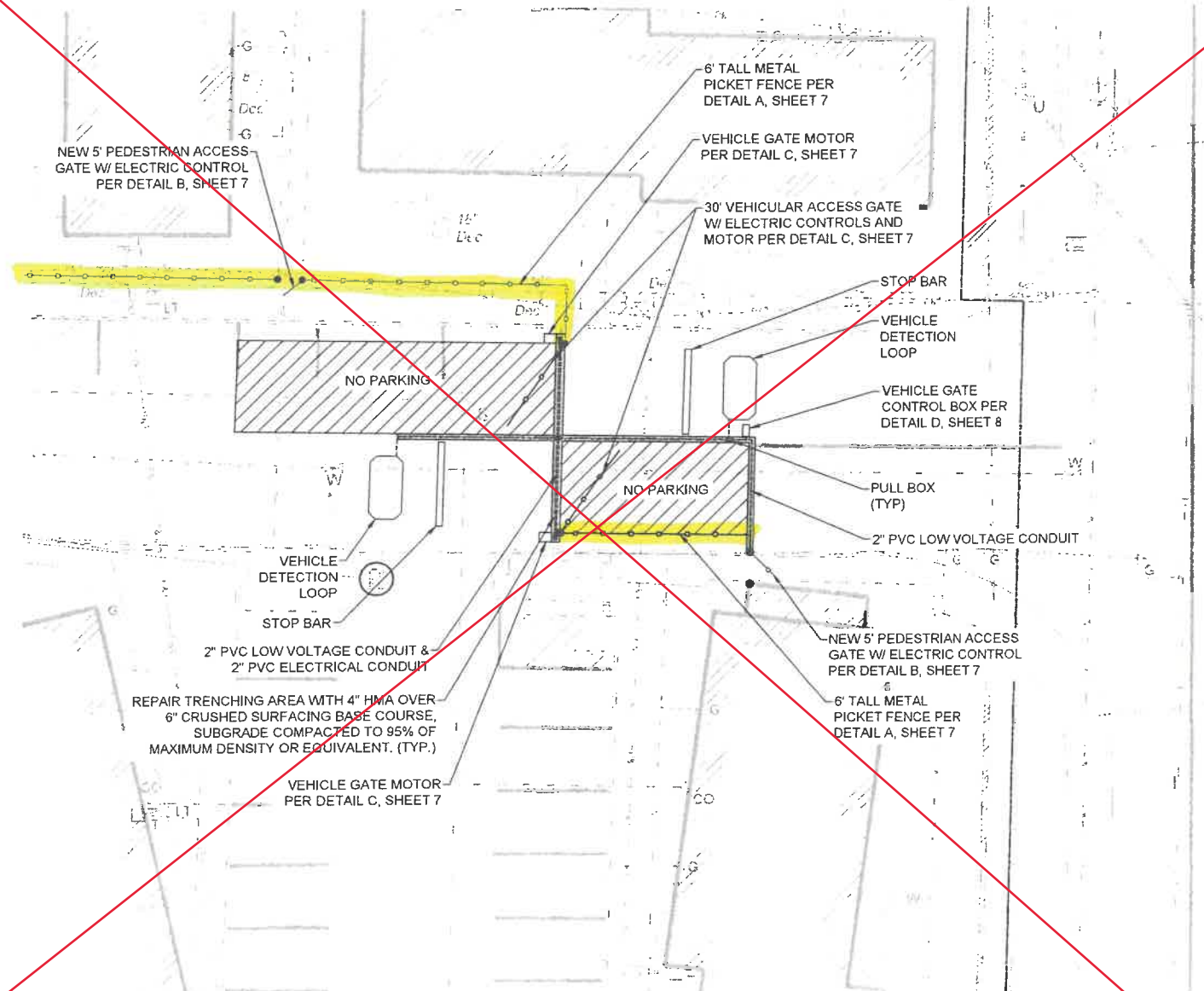
DAVID EVANS AND ASSOCIATES INC.
20300 Woodville Snohomish Road NE
Woodinville, WA 98072
Phone: 425.415.2000

WASHINGTON

VALLI KEE APARTMENTS - 23401 104TH AVENUE SE, KENT WA 98031

FENCING PLANS
KING COUNTY HOUSING AUTHORITY
FENCING PLAN

KENT



SOUTHERN VEHICLE ACCESS GATE

SCALE 1" = 10'

Plot Date: 11/27/2023 12:41 PM
By: [Redacted]
Sheet Name: 11/27/2023 12:41 PM

CAUTION
LOCATION OF EXISTING UTILITIES SHOWN IS APPROXIMATE AND MAY NOT BE ACCURATE OR ALL INCLUSIVE. IT IS THE CONTRACTOR'S RESPONSIBILITY TO FIELD VERIFY LOCATION OF UTILITIES PRIOR TO PROCEEDING WITH CONSTRUCTION. YOU MUST CALL 1-800-424-5555 NOT LESS THAN TWO FULL BUSINESS DAYS BEFORE BEGINNING EXCAVATION WHERE ANY UNDERGROUND UTILITIES MAY BE LOCATED. EXISTING UTILITIES TO BE LOCATED, PROTECTED AND REPAIRED IN ACCORDANCE WITH RCW 19.122

CHECKED BY: TWW
DESIGNED BY: TWW
DRAWN BY: MAR
FIRST SUBMITTAL DATE: 10/06/23
PROJECT NO.: **KCHA00006068**
SHEET NO.: **6 of 8**

REVISIONS

NO.	DATE	REVISION

A PORTION OF THE NW 1/4 OF SW 1/4 SEC 17, TWP. 22N., RGE 05E., W.M.

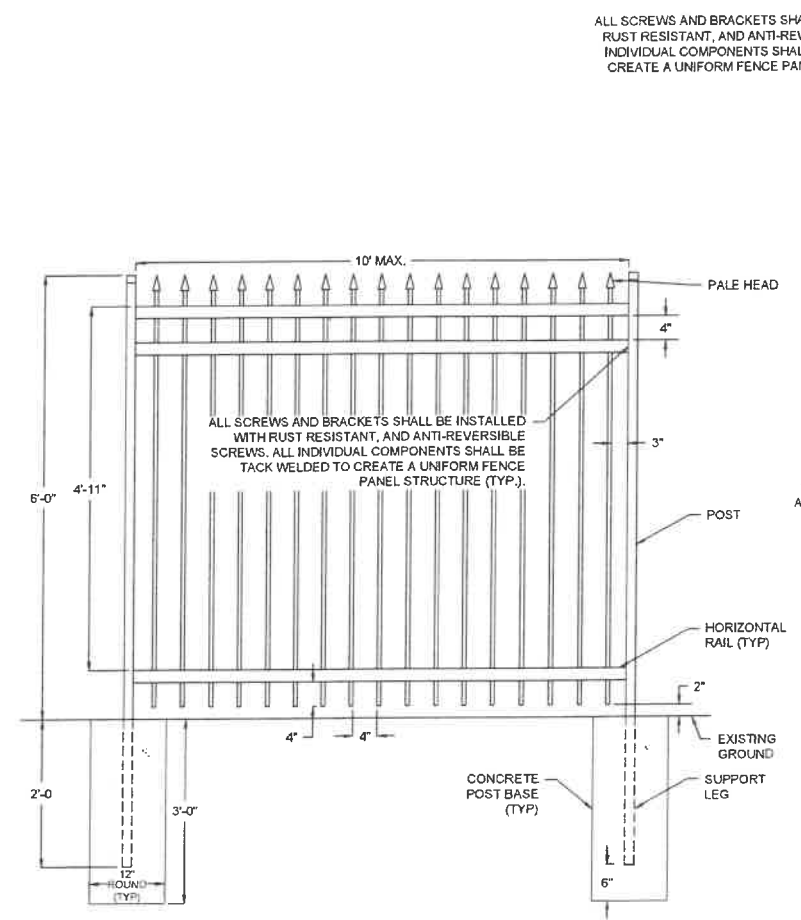
DAVID EVANS AND ASSOCIATES INC.
 2030 Woodville Station Road NE
 Woodinville, WA 98072
 Phone 425.415.2000

VALLI KEE APARTMENTS - 23401 104TH AVENUE SE, KENT WA 98031

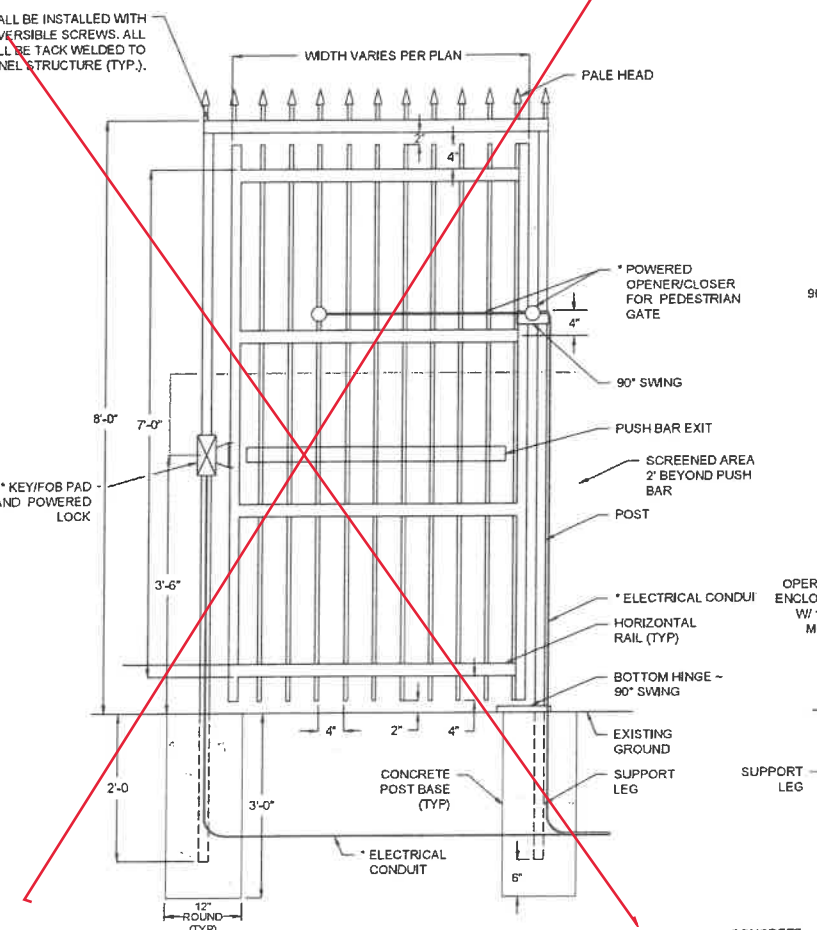
FENCING PLANS
 KING COUNTY HOUSING AUTHORITY
 FENCE DETAILS

WASHINGTON

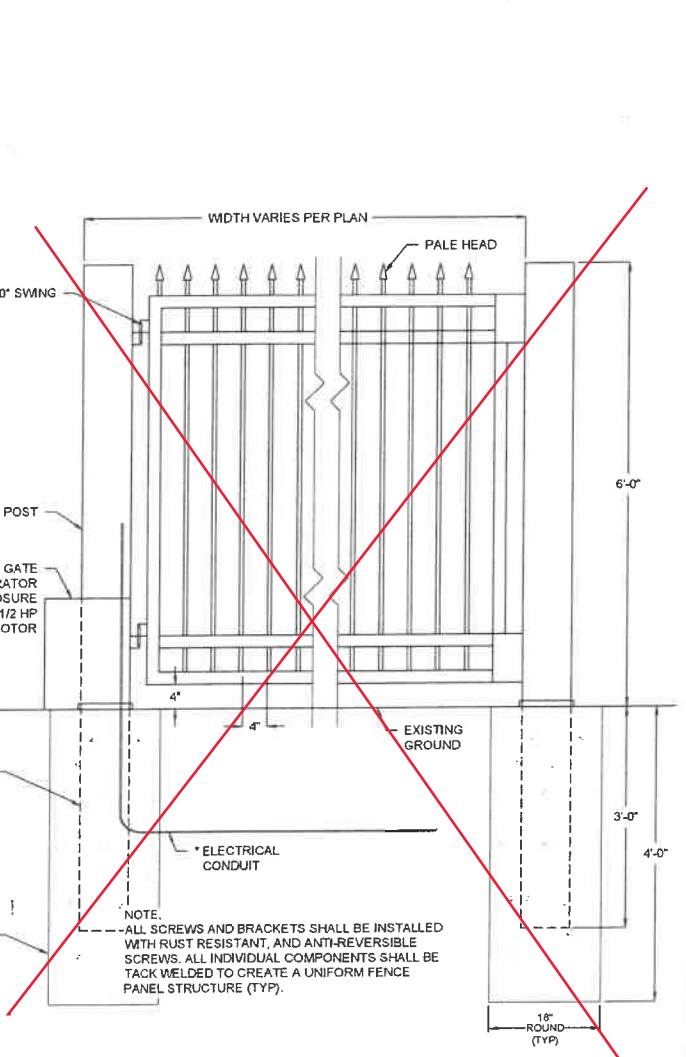
KENT



DETAIL A - 6' TALL THREE RAIL METAL FENCE
 NOT TO SCALE



DETAIL B - PEDESTRIAN ACCESS GATE
 NOT TO SCALE



DETAIL C - VEHICULAR ACCESS GATE
 NOT TO SCALE

GENERAL NOTE:
 * LIGHTING, CAMERA, CONTROLS, MONITORING, AND OTHER SECURITY SYSTEMS TO BE COORDINATED LATER.

GENERAL NOTE:
 * LIGHTING, CAMERA, CONTROLS, MONITORING, AND OTHER SECURITY SYSTEMS TO BE COORDINATED LATER.

NOTES FOR DETAILS A, B AND C

- ALL CONCRETE POST BASES SHALL BE 12" (IN) DIAMETER AND CONSIST OF PORTLAND CEMENT CONCRETE CLASS 4000 (MIN).
1. DETAILS ARE ILLUSTRATIVE AND SHALL NOT LIMIT HARDWARE DESIGN.
 2. CONTRACTOR SHALL COORDINATE WITH SUPPLIER TO PROVIDE APPROPRIATE FENCING DETAILS FOR REVIEW.
 3. ALL SCREWS AND BRACKETS SHALL BE INSTALLED WITH RUST RESISTANT, AND ANTI-REVERSIBLE SCREWS. ALL INDIVIDUAL COMPONENTS SHALL BE TACK WELDED TO CREATE A UNIFORM FENCE PANEL STRUCTURE (TYP.).

CAUTION
 LOCATION OF EXISTING UTILITIES SHOWN IS APPROXIMATE AND MAY NOT BE ACCURATE OR ALL INCLUSIVE. IT IS THE CONTRACTOR'S RESPONSIBILITY TO FIELD VERIFY LOCATION OF UTILITIES PRIOR TO PROCEEDING WITH CONSTRUCTION. YOU MUST CALL 1-800-424-5555 NOT LESS THAN TWO FULL BUSINESS DAYS BEFORE BEGINNING EXCAVATION WHERE ANY UNDERGROUND UTILITIES MAY BE LOCATED. EXISTING UTILITIES TO BE LOCATED, PROTECTED, AND REPAIRED IN ACCORDANCE WITH RCW 19.122.

REVIEWED BY: []
 DATE: []

CHECKED BY: TWV
 DESIGNED BY: TWV
 DRAWN BY: MAR

FIRST SUBMITTAL DATE: 10/02/23

PROJECT NO:
KCHA00006068

SHEET NO.

Pdf Date: 11/07/2023 12:42 PM
 Save Date: 10/27/2023 1:26 PM
 By: Admin
 File Path: P:\WORK\14000000000000000000\DCAD\DCAD\FINAL\SHRETS\01-F-KCHA00006068.dwg

A PORTION OF THE NW 1/4 OF SW 1/4 SEC 17, TWP. 22N., RGE 05E., W.M.

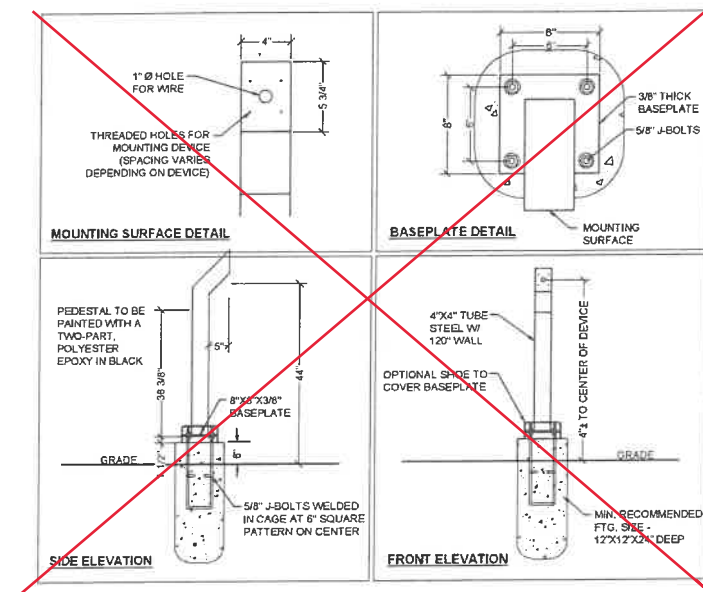
DAVID EVANS & ASSOCIATES INC.
 2000 Woodville Spokane Road NE
 Woodinville, WA 98072
 Phone 425 415 2000

VALLI KEE APARTMENTS - 23401 104TH AVENUE SE, KENT WA 98031

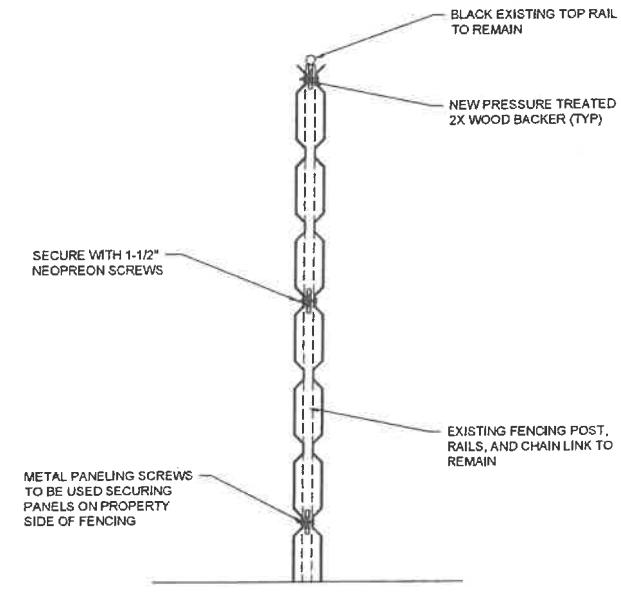
FENCING PLANS
 KING COUNTY HOUSING AUTHORITY
 FENCE DETAILS

WASHINGTON

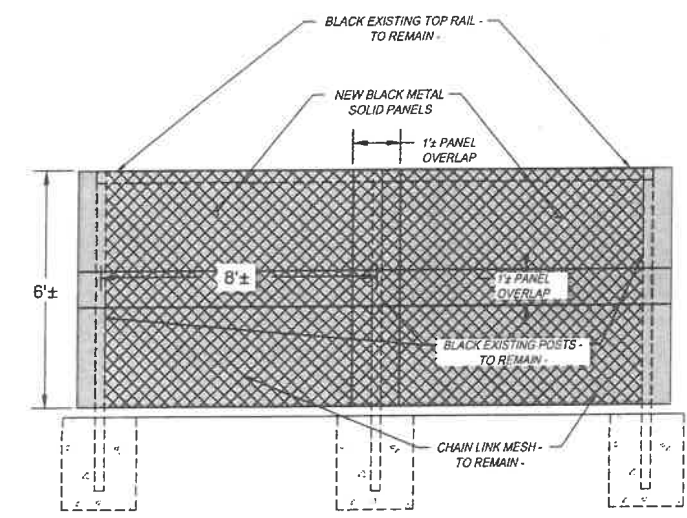
KENT



~~DETAIL D - VEHICLE GATE CONTROL BOX PEDESTAL~~
 NOT TO SCALE



SECTION VIEW
 DETAIL E - METAL SOLID PANELS
 NOT TO SCALE



PLAN VIEW

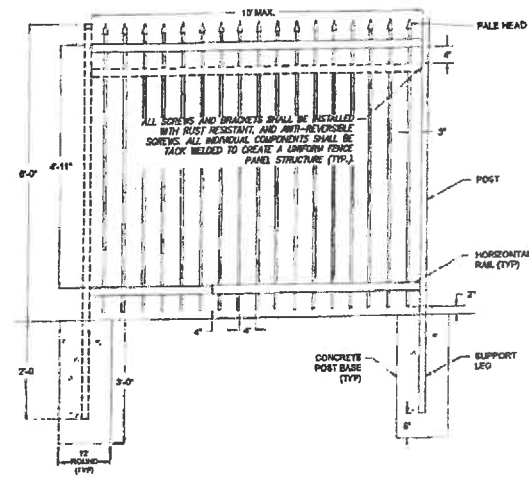
CAUTION
 LOCATION OF EXISTING UTILITIES SHOWN IS APPROXIMATE AND MAY NOT BE ACCURATE OR ALL INCLUSIVE. IT IS THE CONTRACTOR'S RESPONSIBILITY TO FIELD VERIFY LOCATION OF UTILITIES PRIOR TO PROCEEDING WITH CONSTRUCTION. YOU MUST CALL 1-800-424-5555 NOT LESS THAN TWO FULL BUSINESS DAYS BEFORE BEGINNING EXCAVATION WHERE ANY UNDERGROUND UTILITIES MAY BE LOCATED. EXISTING UTILITIES TO BE LOCATED, PROTECTED, AND REPAIRED IN ACCORDANCE WITH RCW 19.122.

CHECKED BY: TWW
 DESIGNED BY: TWW
 DRAWN BY: MAR
 FIRST SUBMITTAL DATE: 8/28/23
 PROJECT NO.: KCHA00006068
 SHEET NO.: 8 OF 8

Plot Date: 11/7/2023 12:42 PM
 Saw Date: 10/7/2023 1:26 PM
 By: Marlene Williams
 File: P:\WORK\HARDWARE\KCHA\KCHA00006068\KCHA00006068.DWG

NOTES

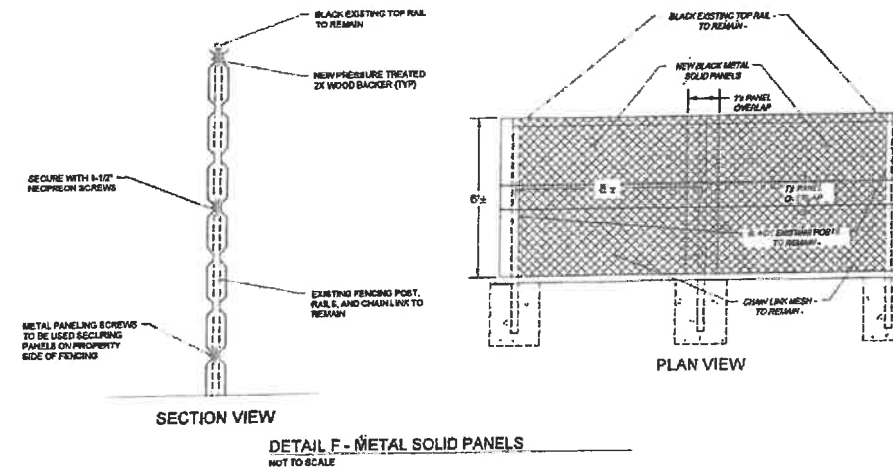
1. ALL CONCRETE POST BASES SHALL BE 10" (Ø) DIAMETER AND CONSIST OF PORTLAND CEMENT CONCRETE CLASS 4000 (MIN.).
2. DETAILS ARE ILLUSTRATIVE AND SHALL NOT LIMIT HARDWARE DESIGN. CONTRACTOR SHALL COORDINATE WITH SUPPLIER TO PROVIDE APPROPRIATE FENCING DETAILS FOR REVIEW.
3. ALL SCREWS AND BRACKETS SHALL BE INSTALLED WITH RUST RESISTANT AND AIR-REPELLENT. ALL METAL COMPONENTS SHALL BE TACK WELDED TO CREATE A UNIFORM FENCE PANEL STRUCTURE (TYP.).



DETAIL A - 6' TALL THREE RAIL METAL FENCE
NOT TO SCALE

Picket Fence Specifications:

1. Ameristar Montage II Industrial Ornamental Steel Fence
2. Pickets: Classic 1"sq x14ga Rails (3): 1.75"x1.75" x 12ga Posts: 2.5"sq x 12ga
3. Rakeable Panels, Standard bottom Rail, 6ft Height



DETAILS

EXHIBIT A.1



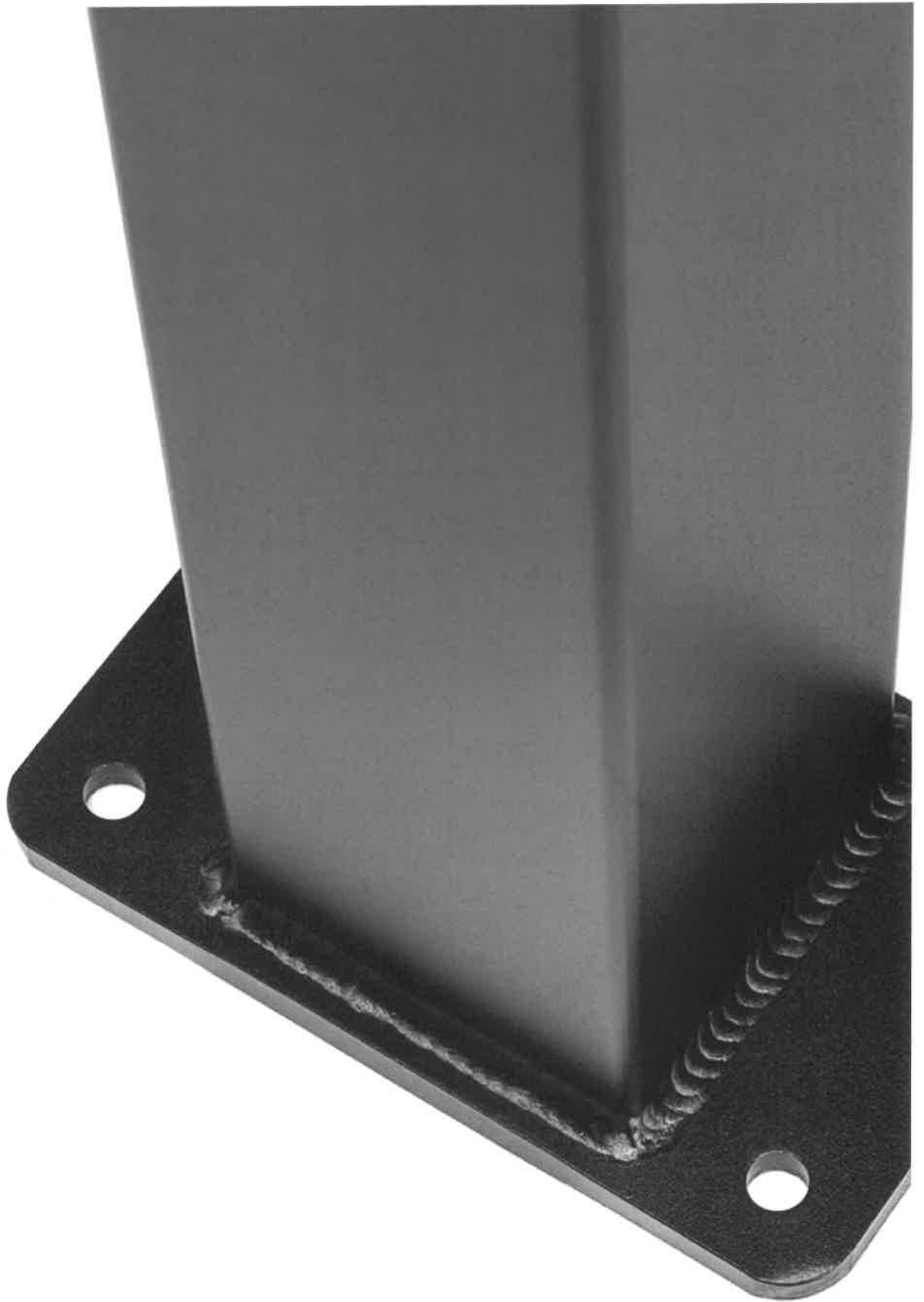


EXHIBIT A 2



**Metal Sales
 Manufacturing Corporation**

This specification data sheet is provided by Metal Sales Manufacturing Corporation as a technical support tool incident to the sale of its IC72-Panel, 7/8" Corrugated and PBR-Panel metal panel products. Contact Metal Sales for more information on these and other products.
 Telephone: 800.406.7387
 metalsales.us.com

Section 07 42 13 - METAL WALL PANELS

1. PRODUCT NAMES

IC72-Panel, 7/8" Corrugated and PBR-Panel metal wall panels.

2. MANUFACTURER

Metal Sales Manufacturing Corporation
 545 South 3rd Street, Suite 200
 Louisville, KY 40202
 Toll Free: 800.406.7387
 Phone: 502.855.4300
 Fax: 502.855.4200
 Web: metalsales.us.com
 E-Mail: rgage@metalsales.us.com

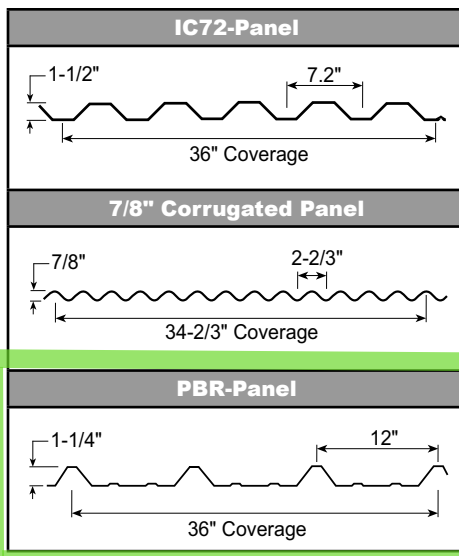
3. PRODUCT DESCRIPTION

Basic Use

For more than 55 years, Metal Sales has earned a reputation as the premier provider of metal building components and accessories. Metal Sales maintains the industry's largest professional sales and service team, supported by 21 branches located throughout the United States and offers a full line of high quality metal roof and wall panels for agricultural, commercial, architectural, industrial and residential projects of every shape and size for both new construction and retrofit applications. Metal Sales is dedicated to leading the metal building component industry, by setting new standards for operating efficiency, product design, active service management and lasting value.

Manufacturer Memberships and Affiliations

CRRC - Cool Roof Rating Council
 MCA - Metal Construction Association
 CSI - Construction Specifications Institute
 NRCA - National Roofing Contractors Association
 ENERGY STAR® Partner



4. TECHNICAL DATA

Applicable Standards

- ASTM A 653 – Standard Specification for Steel Sheet, Zinc-Coated (Galvanized) or Zinc-Iron Alloy-Coated (Galvannealed) by the Hot-Dip Process.
- ASTM A 792 – Standard Specification for Steel Sheet, 55% Aluminum-Zinc Alloy-Coated by the Hot-Dip Process.
- ASTM A 1011 – Standard Specification for Steel, Sheet and Strip, Hot-Rolled, Carbon, Structural, High-Strength Low-Alloy, High-Strength Low-Alloy with Improved Formability, and Ultra-High Strength.
- ASTM D 2244 – Standard Practice for Calculation of Color Tolerances and Color Differences from Instrumentally Measured Color Coordinates.
- ASTM D 4214 – Standard Test Methods for Evaluating the Degree of Chalking of Exterior Paint Films.
- ASTM E 84 – Standard Test Method for Surface Burning Characteristics of Building Materials.
- ASTM E 283 - Standard Test Method for Determining Rate of Air Leakage Through Exterior Windows, Curtain Walls, and Doors Under Specified Pressure Differences Across the Specimen.
- ASTM E 331- Standard Test Method for Water Penetration of Exterior Windows, Skylights, Doors, and Curtain Walls by Uniform Static Air Pressure Difference.

Underwriters Laboratories (UL):

- UL 263 - Fire Tests of Building Construction and Materials.



Silicon Valley Animal Center, Milpitas, CA

Approvals:

2020 State of Florida Building Code:

- Approval 9482.1. (Applies to 7/8" Corrugated product).
- Approval 9482.4. (Applies to PBR-Panel product).

Miami-Dade County Approval: NOA 20-0331.02. (Applies to PBR-Panel product).

ICC-ES Evaluation Report: ESR-2385. (Applies to IC72-Panel product, 7/8" Corrugated product and PBR-Panel product).

Physical Properties:

Test reports are available to design professionals upon request.

Note: Industry designation for material thickness is moving away from "gauge" to decimal thickness in inches. Metal Sales recommends use of a minimum thickness requirement of 0.018-inch (0.46-mm) instead of 26 gauge, 0.0236-inch (0.60-mm) instead of 24 gauge, 0.0296-inch (0.75-mm) instead of 22 gauge, 0.0356 inch (0.904 mm) instead of 20 gauge and 0.0466 inch (1.184 mm) instead of 18 gauge. For Galvalume, specify AZ50 for painted material or AZ55 for unpainted material. For galvanized, specify G90.

Technical Properties for IC72-Panel Products:

- ▶ Panel coverage: 36 inches (914.4 mm).
- ▶ Rib Height: 1-1/2 inches (38.1 mm).
- ▶ Material: Aluminum-zinc alloy-coated or zinc-

coated steel sheet, AZ50, AZ55 or G90 coating designation, structural quality, Grade 50 or Grade 33, 0.0236-inch (0.60-mm), 0.0296-inch (0.75-mm), 0.0356 inch (0.904 mm) and 0.0466 inch (1.164 mm) minimum thickness. Not all thicknesses are produced at all branches.

- ▶ Attachment: Exposed, direct-fastened panel.
- ▶ Application: Designed for application over open framing or solid substrate.
- ▶ Rib Configuration: Trapezoidal.
- ▶ Surface Finish: PVDF (Kynar 500) or Acrylic-Coated Galvalume.
- ▶ Color: Contact Metal Sales for information on color availability.
- ▶ Testing: Fire Resistance Rating: Complies with UL 263.

Air Leakage: 0.0148 cfm/sq. ft. when tested according to ASTM E 283.

Water Penetration: None at 6.24 psf when tested according to ASTM E 331.

- ▶ Approvals: Code and Testing Agency Approvals: ICC-ES Evaluation Report: ESR-2385.

Technical Properties for 7/8" Corrugated Products:

- ▶ Panel coverage: 34-2/3 inches (880.5 mm).
- ▶ Rib Height: 7/8 inch (22.2 mm).
- ▶ Material: Aluminum-zinc alloy-coated or zinc-coated steel sheet, AZ50, AZ55 or G90 coating designation, structural quality, Grade 50 or Grade 33, 0.018-inch (0.46-mm), 0.0236-inch (0.60-mm), 0.0296-inch (0.75-mm) or 0.0356 inch (0.904-mm) minimum thickness.
- ▶ Attachment: Exposed, direct-fastened panel.
- ▶ Application: Designed for application over open framing or solid substrate.
- ▶ Rib Configuration: Sinusoidal.
- ▶ Surface Finish: MS Colorfast45, PVDF (Kynar 500) or Acrylic-Coated Galvalume.
- ▶ Color: Contact Metal Sales for information on color availability.
- ▶ Testing: Fire Resistance Rating: Complies with UL 263.

Air Leakage: 0.004 cfm/sq. ft. when tested according to ASTM E 283.

Water Penetration: None at 12 psf when tested according to ASTM E 331.

- ▶ Approvals: Code and Testing Agency Approvals: Complies with 2020 State of Florida Building Code Approval 9482.1. ICC-ES Evaluation Report: ESR-2385.

Technical Properties for PBR-Panel Products:

- ▶ Panel coverage: 36 inches (914.4 mm).
- ▶ Rib Height: 1-1/4 inches (31.8 mm).
- ▶ Material: Aluminum-zinc alloy-coated or zinc-coated steel sheet, AZ50, AZ55 or G90 coating



Silicon Valley Animal Center, Milpitas, CA

designation, structural quality, Grade 50, 0.018-inch (0.46-mm), 0.0236-inch (0.60-mm) or 0.0296-inch (0.75-mm) minimum thickness.

- ▶ Attachment: Exposed, direct-fastened panel.
- ▶ Application: Designed for application over open framing or solid substrate.
- ▶ Rib Configuration: Trapezoidal.
- ▶ Surface Finish: MS Colorfast45, PVDF (Kynar 500) or Acrylic-Coated Galvalume.
- ▶ Color: Contact Metal Sales for information on color availability.
- ▶ Testing: Fire Resistance Rating: Complies with UL 263.
- ▶ Approvals: Code and Testing Agency Approvals: Complies with Miami-Dade County Approval NOA 20-0331.02. Complies with 2020 State of Florida Building Code Approval: 9482.4. ICC-ES Evaluation Report: ESR-2385.

Environmental Considerations

Construction metals generally are readily recyclable at the end of their service life. The raw materials used in manufacture of metal wall panels also come from recycled sources. Pre-consumer and post-consumer recycled content varies. Consult with manufacturer for more information.

Fire Performance

Flame-Spread Index: 25 or less (Class A) or 200 (Class C).

5. INSTALLATION

Handling and Storage

Handle and store product according to Metal Sales

recommendations. Deliver materials in manufacturer's original, unopened, undamaged containers with identification labels intact. Store materials above ground, under waterproof covering, protected from exposure to harmful weather conditions and at temperature and humidity conditions recommended by manufacturer. Provide proper ventilation of metal panel system to prevent condensation build-up between each panel and trim or flashing component. Tilt stack to drain in wet conditions. Remove strippable plastic film before storage under high-heat conditions. Store products in manufacturer's unopened packaging until just prior to installation. Exercise caution in unloading and handling metal panel system to prevent bending, warping, twisting and surface damage.

Preparation

Install furring, angles, sub-purlins, and other miscellaneous wall panel support members and anchor according to metal wall panel manufacturer's recommendations. Ensure panel support is in-plane. Limit in-plane variance to no more than a total of 1/4 inch (6mm) on 10 feet (3.05 m).

Thermal Insulation Installation

Install polyethylene vapor retarder if required. Install blanket insulation if required, in compliance with installation requirements in Division 07 Section "Thermal Insulation."



SPECIFICATION DATA

Metal Wall Panel Installation

Verify that site conditions are acceptable for installation. Do not proceed with installation until unacceptable conditions are corrected. Comply with panel manufacturer's installation instructions including but not limited to special techniques, interface with other work and integration of systems. Fasten metal wall panels to supports with concealed clips at each standing-seam joint at location, spacing and using proper fasteners as recommended by panel manufacturer. Comply with installation tolerances as required.

Accessory Installation

Install accessories using techniques recommended by manufacturer and which will assure positive anchorage to building and weather tight mounting. Provide for thermal movement. Coordinate installation with flashings and other components. For Flashing and Trim, comply with performance requirements, manufacturer's written installation instructions and the SMACNA "Architectural Sheet Metal Manual." Provide concealed fasteners where possible, and install units to true level. Install work with laps, joints and seams that will be permanently watertight.

Field Quality Control

If requested by Owner, provide manufacturer's field service consisting of product use recommendations and site visits for inspection of product installation in accordance with manufacturer's instructions.

Precautions, Cleaning and Protection

Touch-up paint is used to cover and protect unexpected scratches on the paint finish that may occur during installation of panel. Touch-up paint will not weather as well or at the same rate as the original system. Test in an area that will not be noticeable. Metallic paint colors are available at an additional charge. Minor differences in color and appearance are normal and to be expected.

To minimize possible differences in appearance, an entire project should be painted at one time, from one batch of paint, using the same application equipment. Additionally, fabricated panels, flat sheet, and flashings should be oriented in the same direction.

After installation remove temporary coverings and protection of adjacent work areas. Repair or replace any installed products that have been damaged. Clean installed panels in accordance with manufacturer's instructions prior to Owner's acceptance. Remove and lawfully dispose of construction debris from Project site. Protect installed product and finish surfaces from damage during construction.

Building Codes

Current data on building code requirements and product compliance may be obtained from Metal Sales technical support specialists. Installation must comply with the requirements of authority having jurisdiction.

6. AVAILABILITY AND COST

Availability

Metal Sales products are nationally distributed and supported from 21 convenient locations nationwide, including Alaska. Manufacturer has the ability to ship worldwide. Contact manufacturer for information on local availability.

Cost

Budget installed cost information may be obtained from a local Metal Sales distributor or directly from the manufacturer.

7. WARRANTY

Special Exposed Panel Finish Warranty: Manufacturer's standard form PVDF (Fluorocarbon System) Warranty for film integrity, chalk rating and fade rating in which manufacturer agrees to repair or replace panels that show evidence of deterioration within specified warranty period. Deterioration shall include, but is not limited to, color fading of more than 5 Hunter units when tested according to ASTM D 2244, chalking in excess of a No. 8 rating when tested according to ASTM D 4214 or cracking, checking, peeling or failure of paint to adhere to bare metal. Warranty Period for film integrity is 45 years and for chalk and fade rating is 35 years. Metal Sales warranty excludes surface deterioration due to physical damage and exposure to salt air environments.

Special Exposed Panel Finish Warranty: Manufacturer's standard form (MS Colorfast45) proprietary two coat roll coated System Warranty for film integrity, chalk rating and fade rating in which manufacturer agrees to repair or replace panels that show evidence of deterioration within specified warranty period. Deterioration shall include, but is not limited to, color fading of more than 5 Hunter units on vertical applications or more than 6 Hunter units on non-vertical applications when tested according to ASTM D 2244, chalking in excess of a No. 8 rating on vertical applications or a No. 7 rating on non-vertical applications when tested according to ASTM D 4214, cracking, checking, peeling or failure of paint to adhere to bare metal or perforation. Warranty Period for film integrity is 45 years, chalk and fade rating for 30 years and perforation for 25 years for AZ50 material. Metal Sales warranty excludes surface deterioration due to physical damage and exposure to salt air environments.

8. MAINTENANCE

No specific maintenance is required for properly installed Metal Sales wall panel products. Periodic panel inspection to verify system integrity, drainage functionality and repair of storm damage is advised.

9. TECHNICAL SERVICES

Technical assistance, including more detailed information, product literature, test results, project lists, assistance in preparing project specifications and arrangements for application supervision, is available by contacting Metal Sales.

10. FILING SYSTEMS

Additional product information is available from the manufacturer upon request. Metal Sales product information may be found online metalsales.us.com



Silicon Valley Animal Center, Milpitas, CA

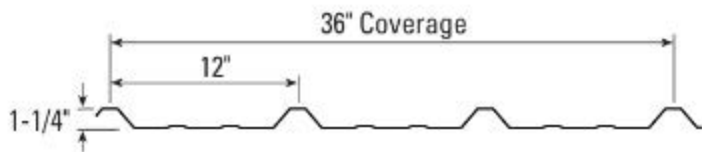
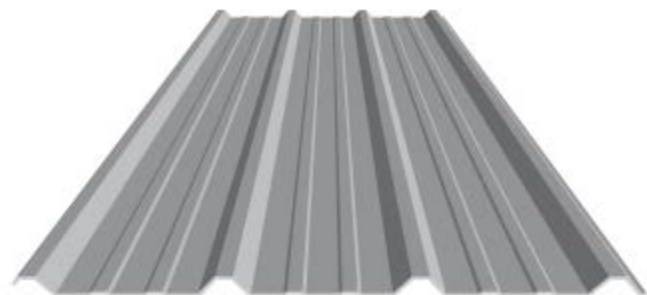
KCHA - VALLI KEE FENCING - EXHIBITS AND SPECS

PBR-PANEL

Liner, Roof, Wall

Panel Coverage: 36"**Rib Height:** 1-1/4"**Rib Features:** 12" centers**Standard Gauges:** 24 ga., 26 ga., 29 ga.**Optional Gauge:** 22 ga.

PBR-Panels are versatile panels. They are used in a wide variety of applications and are suited for open framing support conditions, as well as a solid substrate.

Available Material: Steel**Fasteners:** Exposed**Available Substrates:** Open Framing, Solid Substrate**Standard Finishes:** Acrylic Coated Galvalume®, MS Colorfast45®, PVDF

KCHA - VALLI KEE FENCING - EXHIBITS AND SPECS



Aug 30, 2022 12:16:39 PM
13114 Southeast 277th Place
Kent
King County
Washington

KCHA - VALLI KEE FENCING - EXHIBITS AND SPECS



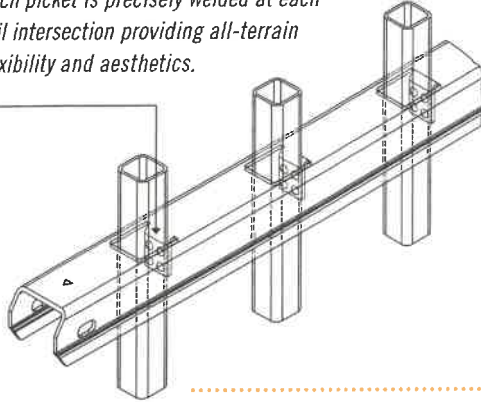
Aug 30, 2022 12:17:35 PM
13118 Southeast 277th Place
Kent
King County
Washington

MONTAGE II®

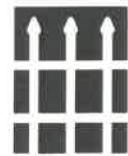
INDUSTRIAL ORNAMENTAL STEEL FENCE

1"sq x 14ga PICKETS | 1.75" x 1.75" x 12ga RAILS | 2.5"sq x 12ga & 3"sq x 12ga POSTS

Each picket is precisely welded at each rail intersection providing all-terrain flexibility and aesthetics.



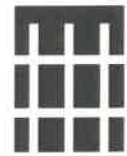
STYLE OPTIONS



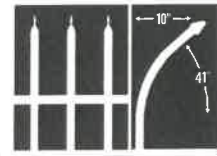
CLASSIC™



MAJESTIC™



GENESIS™



INVINCIBLE™

PROFUSION WELDED STEEL



PROFUSION WELDING

All Montage fence panels are fabricated using Ameristar's ProFusion welding process. This technique combines laser and fusion technology to create a virtually invisible structural connection at every picket to rail intersection. Unlike typical aluminum fence systems that are held together with unsightly screws, the ProFusion weld used with Montage promotes a "good neighbor" profile with sleek lines and no exposed picket to rail fasteners. When compared to aluminum fencing, Montage's welded steel construction is unmatched in strength and durability.



PROTECTED BY E-COAT

E-COAT™ PROTECTIVE FINISH

Montage galvanized steel framework is subjected to a multi-stage pre-treatment/wash (with zinc phosphate), followed by a duplex cathodic electrocoat system consisting of an epoxy primer, which significantly increases corrosion protection, and an acrylic topcoat, which provides the protection necessary to withstand adverse weathering effects. This process results in years of maintenance-free ownership.



20 YEAR LIMITED WARRANTY

The Montage families of fencing products are manufactured from superior quality materials by skilled craftsmen with the highest standards of workmanship in the industry. Ameristar is confident in offering Montage with a 20 year limited warranty.



DOMESTIC MANUFACTURING

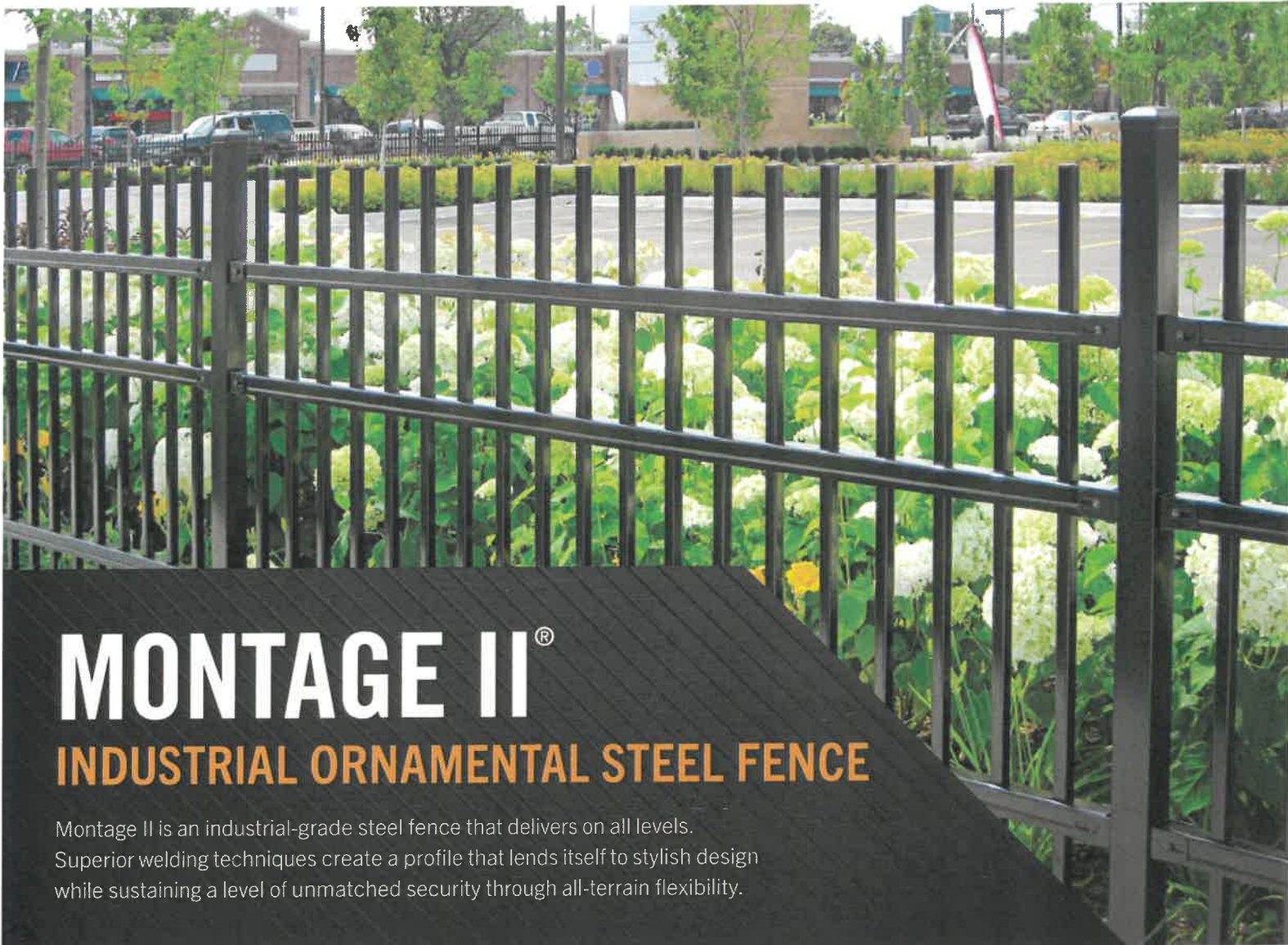
Ameristar is committed to providing products that are manufactured in the USA. We have made significant investments in technology, process improvement, and employee training in an effort to secure American jobs and combat inferior import products.



FENCE PRODUCTS

TO PLACE YOUR ORDER CALL 888-333-3422

VISIT AMERISTARPERIMETER.COM



MONTAGE II[®]

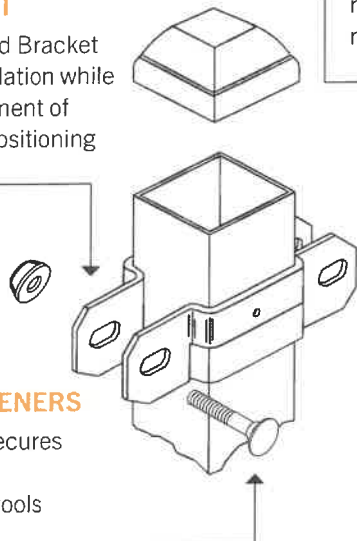
INDUSTRIAL ORNAMENTAL STEEL FENCE

Montage II is an industrial-grade steel fence that delivers on all levels. Superior welding techniques create a profile that lends itself to stylish design while sustaining a level of unmatched security through all-terrain flexibility.

KCHA - VALLI KEE FENCING - EXHIBITS AND SPECS

PANEL BRACKET

Universal Boulevard Bracket enables easy installation while allowing for adjustment of panel height and positioning

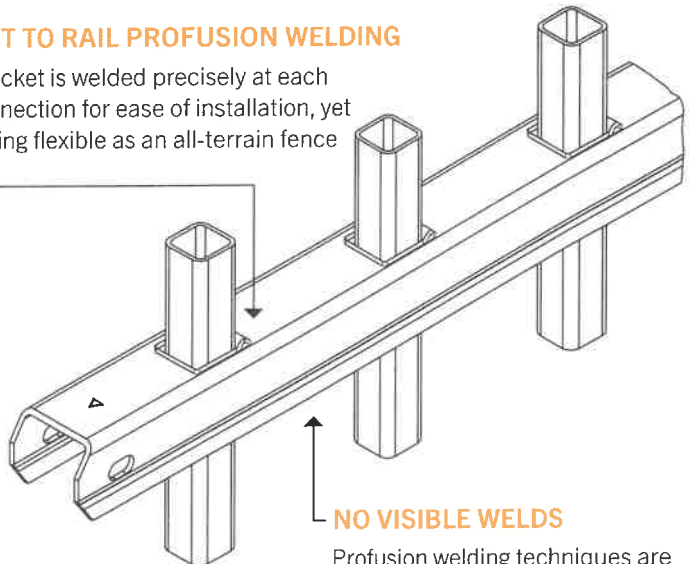


SECURITY FASTENERS

Security fastener secures the rail and deters removal by typical tools

PICKET TO RAIL PROFUSION WELDING

Each picket is welded precisely at each rail connection for ease of installation, yet remaining flexible as an all-terrain fence



NO VISIBLE WELDS

Profusion welding techniques are both strong and hidden from view, providing a good neighbor profile

AMERISTAR® PERIMETER SECURITY USA INC.

Montage II® - Heavy Industrial Steel Ornamental Fence System – Fusion Welded and Rackable

CONSTRUCTION SPECIFICATION - SECTION 32 31 19

PART 1 - GENERAL

1.01 WORK INCLUDED

The contractor shall provide all labor, materials and appurtenances necessary for installation of the welded ornamental steel fence system defined herein at (specify project site).

1.02 RELATED WORK

Section ____ - Earthwork

Section ____ - Concrete

1.03 SYSTEM DESCRIPTION

The manufacturer shall supply a total fence system of Montage II® **Welded and Rackable** (ATF – All Terrain Flexibility) Ornamental Steel (specify Invincible™, Classic™, Majestic™, or Genesis™) design. The system shall include all components (i.e., panels, posts, gates and hardware) required.

1.04 QUALITY ASSURANCE

The contractor shall provide laborers and supervisors who are thoroughly familiar with the type of construction involved and materials and techniques specified.

1.05 REFERENCES

- ASTM A653/A653M - Standard Specification for Steel Sheet, Zinc-Coated (Galvanized) or Zinc-Iron Alloy Coated (Galvannealed) by the Hot-Dip Process.
- ASTM B117 - Practice for Operating Salt-Spray (Fog) Apparatus.
- ASTM D523 - Test Method for Specular Gloss.
- ASTM D714 - Test Method for Evaluating Degree of Blistering in Paint.
- ASTM D822 - Practice for Conducting Tests on Paint and Related Coatings and Materials using Filtered Open-Flame Carbon-Arc Light and Water Exposure Apparatus.
- ASTM D1654 - Test Method for Evaluation of Painted or Coated Specimens Subjected to Corrosive Environments.
- ASTM D2244 - Test Method for Calculation of Color Differences from Instrumentally Measured Color Coordinates.
- ASTM D2794 - Test Method for Resistance of Organic Coatings to the Effects of Rapid Deformation (Impact).
- ASTM D3359 - Test Method for Measuring Adhesion by Tape Test.
- ASTM F2408 – Ornamental Fences Employing Galvanized Steel Tubular Pickets.

1.06 SUBMITTAL

The manufacturer's literature shall be submitted prior to installation.

1.07 PRODUCT HANDLING AND STORAGE

Upon receipt at the job site, all materials shall be checked to ensure that no damage occurred during shipping or handling. Materials shall be stored in such a manner to ensure proper ventilation and drainage, and to protect against damage, weather, vandalism and theft.

1.08 PRODUCT WARRANTY

A. All structural fence components (i.e. rails, pickets, and posts) shall be warranted within specified limitations, by the manufacturer for a period of 20 years from date of original purchase. Warranty shall cover any defects in material finish, including cracking, peeling, chipping, blistering or corroding.

B. Reimbursement for labor necessary to restore or replace components that have been found to be defective under the terms of manufactures warranty shall be guaranteed for five (5) years from date of original purchase.

PART 2 - MATERIALS

2.01 MANUFACTURER

The fence system shall conform to Montage II® **Welded and Rackable** (ATF – All Terrain Flexibility) Ornamental Steel, (specify Invincible™, Classic™, Majestic™, or Genesis™) design, (specify extended picket or flush) bottom rail treatment, (specify 2-Rail, 3-Rail or 4-Rail) style manufactured by Ameristar Fence Products, Inc., in Tulsa, Oklahoma.

2.02 MATERIAL

A. Steel material for fence panels and posts shall conform to the requirements of ASTM A653/A653M, with a minimum yield strength of 45,000 psi (310 MPa) and a minimum zinc (hot-dip galvanized) coating weight of 0.90 oz/ft² (276 g/m²), Coating Designation G-90.

B. Material for pickets shall be 1” square x 14 Ga. tubing. The rails shall be steel channel, 1.75” x 1.75” x .105”. Picket holes in the rail shall be spaced 4.715” o.c. Fence posts and gate posts shall meet the minimum size requirements of Table 1.

2.03 FABRICATION

A. Pickets, rails and posts shall be pre-cut to specified lengths. Rails shall be pre-punched to accept pickets.

B. Pickets shall be inserted into the pre-punched holes in the rails and shall be aligned to standard spacing using a specially calibrated alignment fixture. The aligned pickets and rails shall be joined at each picket-to-rail intersection by Ameristar’s proprietary fusion welding process, thus completing the rigid panel assembly (Note: The process produces a virtually seamless, spatter-free good-neighbor appearance, equally attractive from either side of the panel).

C. The manufactured panels and posts shall be subjected to an inline electrodeposition coating (E-Coat) process consisting of a multi-stage pretreatment/wash, followed by a duplex application of an epoxy primer and an acrylic topcoat. The minimum cumulative coating thickness of epoxy and acrylic shall be 2 mils (0.058 mm). The color shall be Black. The coated panels and posts shall be capable of meeting the performance requirements for each quality characteristic shown in Table 2 (Note: The requirements in Table 2 meet or exceed the coating performance criteria of ASTM F2408).

D. The manufactured fence system shall be capable of meeting the vertical load, horizontal load, and infill performance requirements for Industrial weight fences under ASTM F2408.

E. Swing gates shall be fabricated using 1.75” x 14ga Forerunner double channel rail, 2” sq. x 12ga. gate ends, and 1” sq. x 14ga. pickets. Gates that exceed 6’ in width will have a 1.75” sq. x 14ga. intermediate upright. All rail and upright intersections shall be joined by welding. All picket and rail intersections shall also be joined by welding. Gusset plates will be welded at each upright to rail intersection. Cable kits will be provided for additional trussing for all gates leaves over 6’.

F. Pedestrian swing gates shall be self-closing, having a gate leaf no larger than 48" width. Integrated hinge-closer set (2 qty) shall be ADA compliant that shall include a variable speed and final snap adjustment with compact design (no greater than 5" x 6" footprint). Hinge-closer set (2 qty) shall be tested to a minimum of 500,000 cycles and capable of self-closing gates up to a maximum gate weight of 260 lbs. and maximum weight load capacity of 1,500 lbs. Hinge-closer device shall be externally mounted with tamper-resistant security fasteners, with full range of adjustability, horizontal (.5" - 1.375") and vertical (0 - .5"). Maintenance free hinge-closer set shall be tested to operate in temperatures of negative 20 F to 200 F degrees, and swings to negative 2 degrees to ensure reliable final lock engagement.

PART 3 - EXECUTION

3.01 PREPARATION

All new installation shall be laid out by the contractor in accordance with the construction plans.

3.02 FENCE INSTALLATION

Fence post shall be spaced according to Table 3, plus or minus 1/2". For installations that must be raked to follow sloping grades, the post spacing dimension must be measured along the grade. Fence panels shall be attached to posts with brackets supplied by the manufacturer. Posts shall be set in concrete footers having a minimum depth of 36" (Note: In some cases, local restrictions of freezing weather conditions may require a greater depth). The "Earthwork" and "Concrete" sections of this specification shall govern material requirements for the concrete footer. Posts setting by other methods such as plated posts or grouted core-drilled footers are permissible only if shown by engineering analysis to be sufficient in strength for the intended application.

3.03 FENCE INSTALLATION MAINTENANCE

When cutting/drilling rails or posts adhere to the following steps to seal the exposed steel surfaces; 1) Remove all metal shavings from cut area. 2) Apply zinc-rich primer to thoroughly cover cut edge and/or drilled hole; let dry. 3) Apply 2 coats of custom finish paint matching fence color. Failure to seal exposed surfaces per steps 1-3 above will negate warranty. Ameristar spray cans or paint pens shall be used to prime and finish exposed surfaces; it is recommended that paint pens be used to prevent overspray. Use of non-Ameristar parts or components will negate the manufactures' warranty.

3.04 GATE INSTALLATION

Gate posts shall be spaced according to the manufacturers' gate drawings, dependent on standard out-to-out gate leaf dimensions and gate hardware selected. Type and quantity of gate hinges shall be based on the application; weight, height, and number of gate cycles. The manufacturers' gate drawings shall identify the necessary gate hardware required for the application. Gate hardware shall be provided by the manufacturer of the gate and shall be installed per manufacturer's recommendations.

3.05 CLEANING

The contractor shall clean the jobsite of excess materials; post-hole excavations shall be scattered uniformly away from posts.

Table 1 – Minimum Sizes for Montage II Posts			
<u>Fence Posts</u>	<u>Panel Height</u>		
2-1/2" x 12 Ga.	Up to & Including 6' Height		
3" x 12 Ga.	Over 6' Up to & Including 8' Height		
		<u>Gate Height</u>	
<u>Gate Leaf</u>	<u>Up to & Including 4'</u>	<u>Over 4' Up to & Including 6'</u>	<u>Over 6' Up to & Including 8'</u>

KCHA - VALLI KEE FENCING - EXHIBITS AND SPECS

Up to 4'	2-1/2" x 12 Ga.	3" x 12 Ga.	3" x 12 Ga.
4'1" to 6'	3" x 12Ga.	4" x 11 Ga.	4" x 11 Ga.
6'1" to 8'	3" x 12 Ga.	4" x 11 Ga.	6" x 3/16"
8'1" to 10'	4" x 11 Ga.	6" x 3/16"	6" x 3/16"
10'1" to 12'	4" x 11 Ga.	6" x 3/16"	6" x 3/16"
12'1" to 14'	4" x 11 Ga.	6" x 3/16"	6" x 3/16"
14'1" to 16'	6" x 3/16"	6" x 3/16"	6" x 3/16"

Table 2 – Coating Performance Requirements		
<u>Quality Characteristics</u>	<u>ASTM Test Method</u>	<u>Performance Requirements</u>
Adhesion	D3359 – Method B	Adhesion (Retention of Coating) over 90% of test area (Tape and knife test).
Corrosion Resistance	B117, D714 & D1654	Corrosion Resistance over 1,500 hours (Scribed per D1654; failure mode is accumulation of 1/8" coating loss from scribe or medium #8 blisters).
Impact Resistance	D2794	Impact Resistance over 60 inch lb. (Forward impact using 0.625" ball).
Weathering Resistance	D822 D2244, D523 (60° Method)	Weathering Resistance over 1,000 hours (Failure mode is 60% loss of gloss or color variance of more than 3 delta-E color units).

Table 3 – Montage II – Post Spacing By Bracket Type										
Span	For INVINCIBLE® 8' Nominal (91-1/2" Rail)				For CLASSIC, GENESIS, & MAJESTIC 8' Nominal (92-5/8" Rail)					
	2-1/2"	3"	2-1/2"	3"	2-1/2"	3"	2-1/2"	3"	2-1/2"	3"
Bracket Type	Industrial Flat Mount (BB301)*		Industrial Line 2-1/2" (BB319) 3" (BB320)		Industrial Universal 2.5" (BB302) 3" (BB303)		Industrial Flat Mount (BB301)		Industrial Swivel (BB304)*	
Post Settings ± 1/2" O.C.	94-1/2"	95"	94-1/2"	95"	96"	96-1/2"	96"	96-1/2"	*96"	*96-1/2"

*Note: When using BB304 swivel brackets on either or both ends of a panel installation, care must be taken to ensure the spacing between post and adjoining pickets meets applicable codes. This will require trimming one or both ends of the panel. When using the BB301 flat mount bracket for Invincible style, rail may need to be drilled to accommodate rail to bracket attachment.