

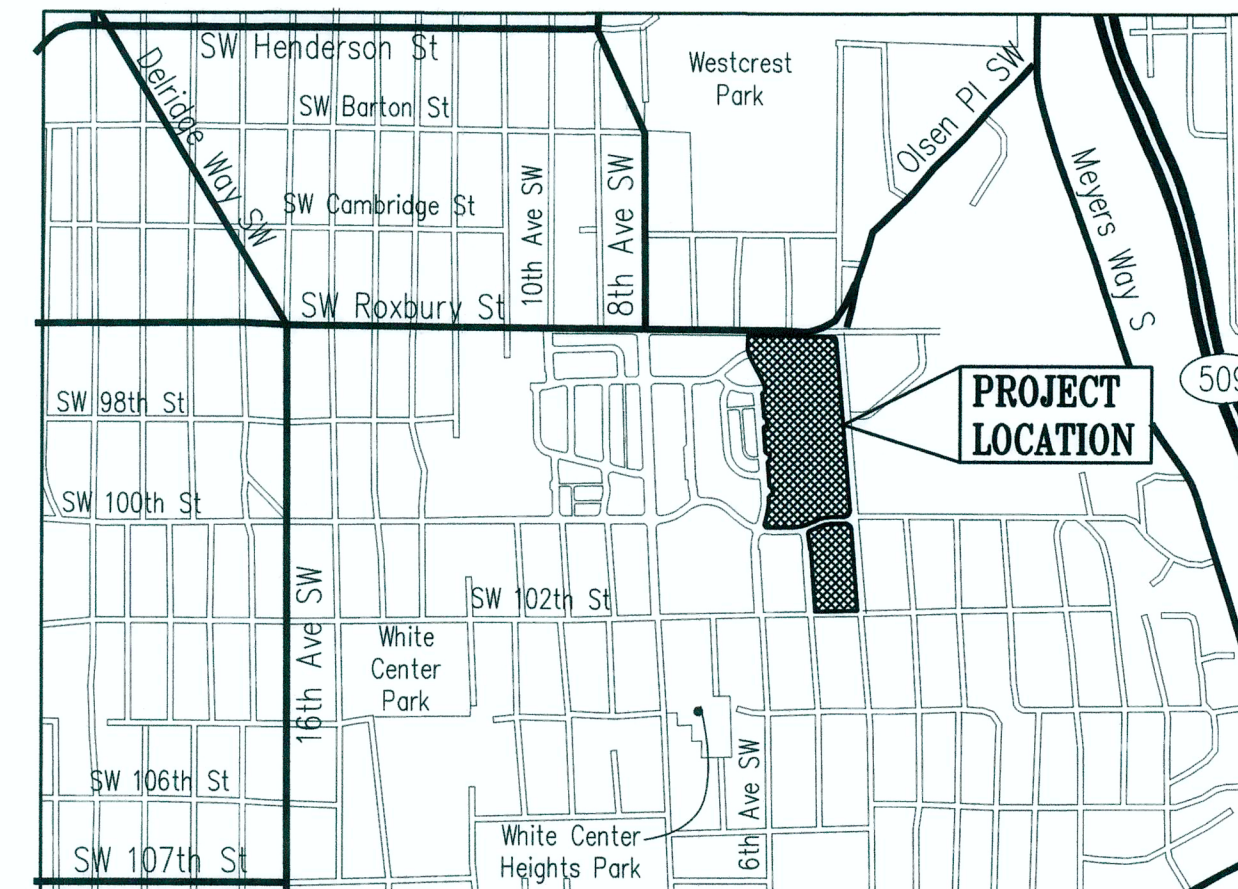
GREENBRIDGE DIVISION 8

INFRASTRUCTURE

WATER IMPROVEMENT PLANS

(KING COUNTY WATER DISTRICT #20)

SEC. 6, T.23 N., R.4E., W.M.
 King County, Washington
 FEBRUARY 2020
 PERMIT SUBMITTAL



VICINITY MAP
 N.T.S.

Contract No.
PROJECT DEVELOPER
 KING COUNTY HOUSING AUTHORITY
 600 ANDOVER PARK WEST
 TUKWILA, WA 98188
 TELEPHONE: (206) 574-1196
 CONTACT PERSON : JOHN ELIASON

PROJECT ENGINEER
 KPFF CONSULTING ENGINEERS
 1601 FIFTH AVENUE, SUITE 1600
 SEATTLE, WA 98101
 TELEPHONE: (206) 622-5822

kpff
 1601 5th Avenue, Suite 1600
 Seattle, WA 98101
 206.622.5822
 www.kpff.com



RECORD DRAWINGS
 THESE AS-BUILT DOCUMENTS HAVE BEEN PREPARED FROM THE CONTRACTOR'S REDLINED MARK-UPS OF THE CONSTRUCTION DOCUMENTS. THE ENGINEER REVIEWING THESE RECORD DRAWINGS HAS NOT WITNESSED ALL OF THE ELEMENTS OF CONSTRUCTION AND IS NOT RESPONSIBLE FOR ERRORS OR OMISSIONS IN DATA OR CERTIFY THE ACCURACY OF THE INFORMATION PROVIDED BY THE CONTRACTOR'S AS-BUILT REDLINES.

Water District ²⁰
 KING COUNTY
 APPROVED CONSTRUCTION DRAWINGS: *[Signature]* DATE: 2/5/20

DEA #000000000

LEGEND AND ABBREVIATIONS

	DETAIL REFERENCE NUMBER/SECTION SHEET		SURVEY MONUMENT	
B/W	BACK OF WALK		FIRE HYDRANT	
CB	CATCH BASIN		HORIZONTAL BEND W/ BLOCKING	
CL	CENTERLINE		GATE VALVE	
CONC	CONCRETE		TEE W/ BLOCKING	
CTR	CENTER		WATER METER	
DI	DUCTILE IRON		WATER MAIN	
DOM	DOMESTIC		SLEEVE	
EL, ELEV.	ELEVATION		EXISTING KCWD#20 WATER MAIN	
EX, EXIST	EXISTING		8" SS	SANITARY SEWER LINE
FL	FLANGE JOINT		12" SD	STORM DRAIN LINE
FH	FIRE HYDRANT		12" GD	GREEN DRAIN LINE
G	GAS			
GD	GREEN DRAINAGE			
GV	GATE VALVE			
EX, EXIST.	EXISTING			
IE	INVERT ELEVATION			
LT	LEFT			
MJ	MECHANICAL JOINT			
PL	PROPERTY LINE			
PE	PLAIN END			
P.O.C.	POINT OF CONNECTION			
R/W, ROW	RIGHT OF WAY			
RT	RIGHT			
RJ	RESTRAINED JOINT			
RS	RESILIENT SEATED			
SCL	SEATTLE CITY LIGHT			
SD	STORM DRAINAGE			
SL	SLEEVE			
SS	SANITARY SEWER			
STD(S)	STANDARD(S)			
SVC	SERVICE			
TB	THRUST BLOCK			
W/	WITH			
KCWD#20	KING COUNTY WATER DISTRICT #20			
WL	WATER LINE			
WTR	WATER			

GENERAL NOTES

- A COPY OF THE APPROVED PLANS, AND KCWD#20 SPECIFICATIONS SHALL BE ON SITE WHENEVER CONSTRUCTION IS IN PROGRESS.
- KCWD#20 SHALL OBTAIN ALL PERMITS REQUIRED FOR WORK WITHIN THE PUBLIC RIGHT OF WAY.
- PRIOR TO ANY CONSTRUCTION ACTIVITY, THE CONTRACTOR SHALL SCHEDULE AND ATTEND A PRE-CONSTRUCTION CONFERENCE WITH THE KCWD#20. THE CONTRACTOR SHALL NOTIFY THE OWNER'S PROFESSIONAL ENGINEERING CONSULTANT OF THE PRE-CONSTRUCTION MEETING TIME AND LOCATION.
- VERTICAL DATUM: NAVD 88

BENCH MARK "B"
SOUTHERLY TOP FLANGE BOLT BETWEEN THE LETTERS E & L IN THE WORD MUELLER, ON FIRE HYDRANT AT S.W. CORNER OF 8TH AVE S.W. & S.W. 102ND ST.
ELEVATION = 407.61'

BENCH MARK "C"
CHISELED SQUARE AT INTERSECTION OF BACK OF CONCRETE WALKS AND BACK OF CURBS AT N.E. CORNER OF 4TH AVE. S.W. & S.W. 102ND ST.
ELEVATION = 423.37'
- THE CONTRACTOR SHALL NOTIFY KING COUNTY FIRE DEPARTMENT DISPATCHER (386-1495) TWENTY-FOUR (24) HOURS IN ADVANCE OF ALL WATER SERVICE INTERRUPTIONS, HYDRANT SHUTOFFS, AND STREET CLOSURES OR OTHER ACCESS BLOCKAGE. THE CONTRACTOR SHALL ALSO NOTIFY THE DISPATCHER OF ALL NEW, RELOCATED, OR ELIMINATED HYDRANTS RESULTING FROM THIS WORK.
- ALL LOCATIONS OF EXISTING UTILITIES SHOWN HEREON HAVE BEEN ESTABLISHED BY FIELD SURVEY OR OBTAINED FROM AVAILABLE RECORDS AND SHOULD THEREFORE BE CONSIDERED APPROXIMATE ONLY AND NOT NECESSARILY COMPLETE. IT IS THE SOLE RESPONSIBILITY OF THE CONTRACTOR TO INDEPENDENTLY VERIFY THE ACCURACY OF ALL UTILITY LOCATIONS SHOWN AND TO FURTHER DISCOVER AND AVOID ANY OTHER UTILITIES NOT SHOWN HEREON WHICH MAY BE AFFECTED BY THE IMPLEMENTATION OF THIS PLAN.
- THE CONTRACTOR SHALL LOCATE AND PROTECT ALL CASTINGS AND UTILITIES DURING CONSTRUCTION AND SHALL CONTACT THE UNDERGROUND UTILITIES LOCATOR SERVICE (1-800-424-5555) AT LEAST 48 HOURS PRIOR TO CONSTRUCTION.
- THE CONTRACTOR SHALL ADJUST ALL EXISTING MANHOLE RIMS, DRAINAGE STRUCTURE LIDS, VALVE BOXES, AND UTILITY ACCESS STRUCTURES TO FINISH GRADE WITHIN AREAS AFFECTED BY THE PROPOSED IMPROVEMENTS.
- ALL WORK PERFORMED BY SEATTLE CITY LIGHT, SPU/WATER DEPARTMENT, KCWD#20, AND OTHER PUBLIC/ PRIVATE UTILITIES TO REMOVE OR RELOCATE EXISTING UTILITIES AT THE DEVELOPER'S EXPENSE, SHALL BE COORDINATED BY THE CONTRACTOR.
- THE CONTRACTOR SHALL FIELD VERIFY THE HORIZONTAL AND VERTICAL POSITION OF ALL PROPOSED UTILITY POINTS OF CONNECTION, AND SHALL POTHOLE ALL CROSSINGS WITH EXISTING UTILITIES PRIOR TO THE START OF DEMOLITION AND INSTALLATION OF PROPOSED UTILITIES.
- SURVEY PREPARED BY GOLDSMITH LAND DEVELOPMENT SERVICES. 1215 114TH AVE SE, BELLEVUE, WA. PH# (425)-462-1080

WATER DISTRICT #20 GENERAL WATER NOTES

- PROJECT TO BE CONSTRUCTED IN ACCORDANCE WITH KING COUNTY WATER DISTRICT NO. 20 STANDARD SPECIFICATIONS.
- PIPE DEFLECTION AT JOINTS NOT TO EXCEED 1/2 OF MANUFACTURER'S RECOMMENDATIONS.
- MAINTAIN A MINIMUM OF 10 FEET HORIZONTAL SEPARATION BETWEEN WATER MAIN AND SANITARY SEWER AT ALL LOCATIONS, EXCEPT AS ALLOWED PER SECTION C1-9.1 OF THE CRITERIA FOR SEWAGE WORKS DESIGN AS PUBLISHED BY THE DEPARTMENT OF ECOLOGY IN DECEMBER 1998.
- NOTIFY THE DISTRICT OFFICE IN WRITING A MINIMUM OF 72 HOURS PRIOR TO PROCEEDING WITH CONSTRUCTION.
- WATER WORKS TESTING
SHUT DOWN VALVE(S) TO EXISTING WATER SYSTEM. PUMP UP MAIN TO 250 P.S.I. AS DETERMINED BY ACCURATE PRESSURE GAUGE ON PUMP AND LET SIT FOR A MINIMUM OF 15 MINUTES. THERE SHALL BE NO APPRECIABLE OR ABRUPT LOSS IN PRESSURE IN THE 15 MINUTES. CONTRACTOR SHALL IDENTIFY AND CORRECT THE PROBLEM IF A PRESSURE DROP GREATER THAN 5 P.S.I. OCCURS. (CONTRACTOR TESTING GAUGE MAY BE COMPARED TO DISTRICT PRESSURE GAUGE FOR ACCURACY)

PRIOR TO CALLING OUT THE DISTRICT TO WITNESS THE PRESSURE TEST, THE CONTRACTOR SHALL HAVE ALL EQUIPMENT SET UP AND COMPLETELY READY FOR OPERATION AND SHALL HAVE SUCCESSFULLY PERFORMED THE TEST TO ASSURE HIMSELF/HERSELF THAT THE PIPE IS IN SATISFACTORY CONDITION.
- THE CONTRACTOR SHALL NOT OPERATE ANY GATE VALVES OR MAKE ANY CONNECTIONS TO THE EXISTING WATER SYSTEM WITHOUT PRIOR WRITTEN APPROVAL FROM THE DISTRICT INSPECTOR OR SUPERINTENDENT.
- WATER SERVICE LOCATIONS ARE SHOWN AT APPROXIMATE LOCATION ONLY. ALL FINAL LOCATIONS SHALL BE FIELD STAKED BY THE DEVELOPER'S ENGINEER AND THEN COORDINATED AND FIELD VERIFIED WITH THE DISTRICT INSPECTOR OR SUPERINTENDENT PRIOR TO INSTALLATION. ALL TAPS TO THE WATERMAIN SHALL BE MADE AT THE SAME HORIZONTAL STATION ALONG THE PIPE THAT THE METER IS PLACED UNLESS OTHER ARRANGEMENTS ARE MADE WITH THE DISTRICT.
- DOUBLE SERVICE } 1-1" (MINIMUM) SERVICE LINE PER METER
SINGLE SERVICE }

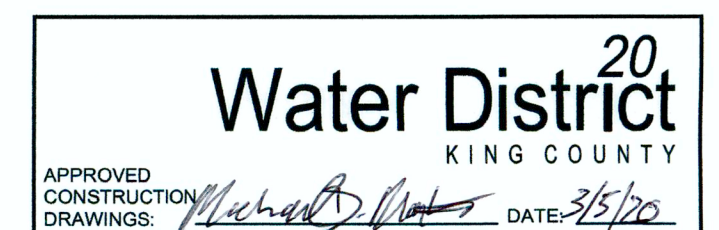
DOUBLE SERVICES SHALL NOT BE LOCATED WHERE THERE WILL BE CONFLICTS WITH OTHER UTILITY BOXES. ANY CHANGES TO THE DESIGN LOCATIONS SHALL BE APPROVED BY DISTRICT MANAGER OR SUPERINTENDENT PRIOR TO INSTALLATION.
- AFTER CLEARING AND A MINIMUM OF 4 WEEKS PRIOR TO WATERLINE INSTALLATION, THE DEVELOPER OR CONTRACTOR SHALL COORDINATE WITH THE DISTRICT SO THAT SOILS TESTING CAN BE COMPLETED BY DEVELOPER AS DETERMINED BY THE DISTRICT. THE DISTRICT WILL DETERMINE WHERE POLYETHYLENE LINING SHALL BE INSTALLED ON THE WATERLINE.

DRAWING INDEX

DRAWING	SHEET	DRAWING TITLE
CVR	1	COVER SHEET
W-1	2	NOTES AND LEGEND
W-1A	3	OVERALL WATER KEY PLAN
W-2	4	SW 97TH STREET PLAN AND PROFILE
W-3	5	5TH LANE SW PLAN AND PROFILE
W-4	6	5TH LANE SW PLAN AND PROFILE
W-5	7	SW 99TH PLACE PLAN AND PROFILE
W-6	8	SW 97TH PLACE PLAN AND PROFILE
W-7	9	SW 98TH STREET PLAN AND PROFILE
W-8	10	SW 98TH PLACE PLAN AND PROFILE
W-9	11	TRACT A-806 PLAN AND PROFILE
W-10	12	SW 100TH PLACE AND 5TH PLACE SW PLAN AND PROFILE
W-11	13	5TH PLACE SW AND SW 101ST PLACE PLAN AND PROFILE
W-12	14	5TH AVENUE SW PLAN AND PROFILE
W-13	15	STANDARD DETAILS
W-14	16	STANDARD DETAILS

RECORD DRAWINGS

THESE AS-BUILT DOCUMENTS HAVE BEEN PREPARED FROM THE CONTRACTOR'S REDLINED MARK-UPS OF THE CONSTRUCTION DOCUMENTS. THE ENGINEER REVIEWING THESE RECORD DRAWINGS HAS NOT WITNESSED ALL OF THE ELEMENTS OF CONSTRUCTION AND IS NOT RESPONSIBLE FOR ERRORS OR OMISSIONS IN DATA OR CERTIFY THE ACCURACY OF THE INFORMATION PROVIDED BY THE CONTRACTOR'S AS-BUILT REDLINES.



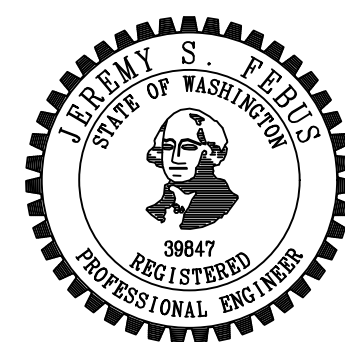
DEA #25270.5

Z:\1600206-1600206 (Greenbridge)\CAD\Design\2-Design Development\W20\01-GB W20 - 1 NOTES.dwg Feb 27, 2020 - 9:57am brianb

NO.	BY	DATE	DESCRIPTION
3		09/13/21	FINAL CORRECTED PLANS - PHASE 1
2		02/27/20	REVISED PER KCWD#20 COMMENTS
1		02/05/20	ORIGINAL SUBMITTAL
REVISIONS			



1601 5th Avenue, Suite 1600
Seattle, WA 98101
206.622.5822
www.kpff.com



KING COUNTY
WATER DISTRICT NO. 20
WATER MAIN EXTENSION



SCALE
HORIZ:
VERT:

DES. F.L.D. BK.
NO.
PG.

CST. F.L.D. BK.
NO.
PG.

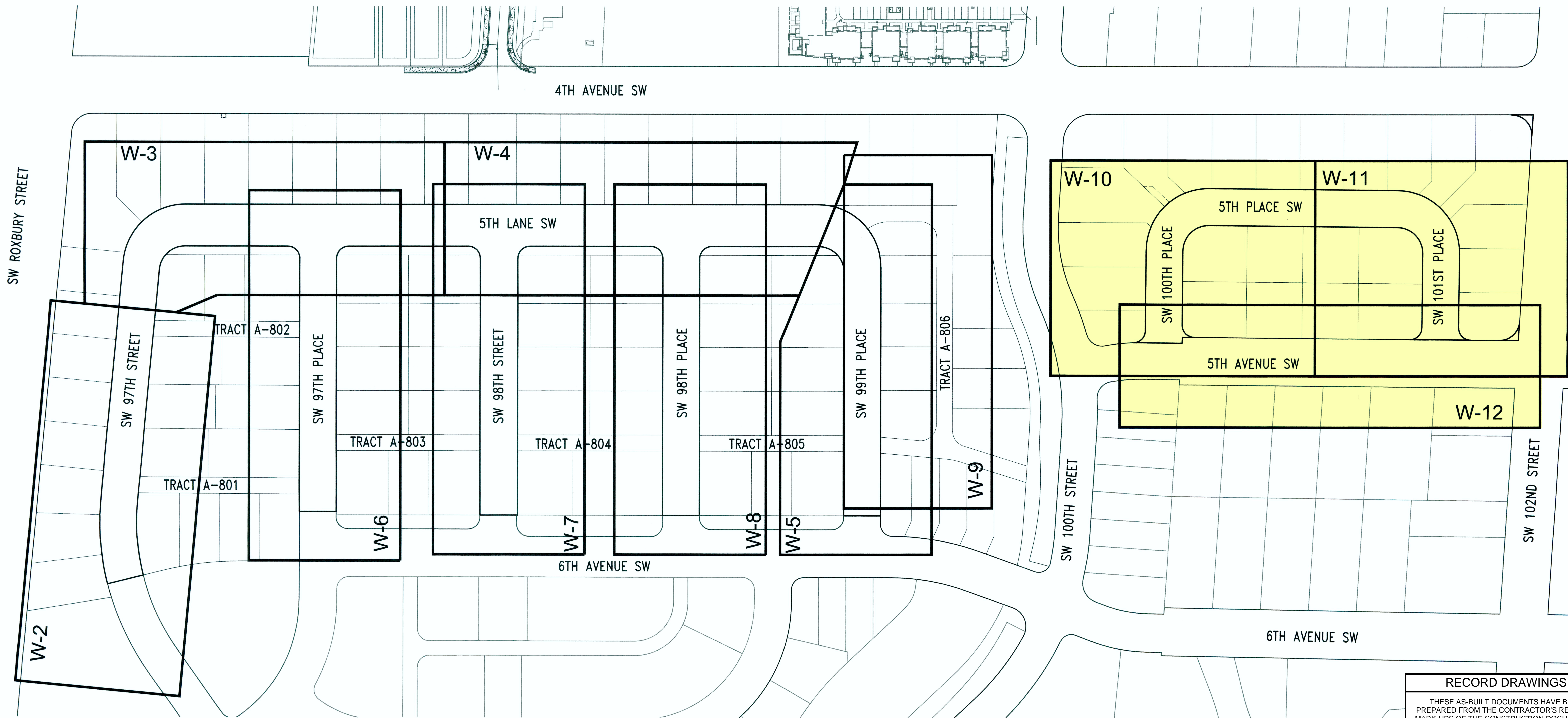
DATE APPROVED	
PRINCIPAL APPROVAL	MAV
DESIGN	BJB
DRAWN	BJB
CHECKED	JCG
JOB NO.	1600206

KING COUNTY HOUSING AUTHORITY

GREENBRIDGE DIVISION 8

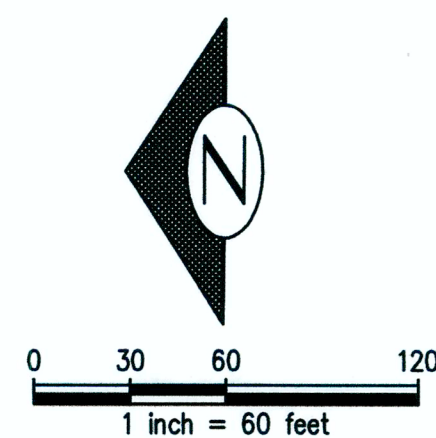
NOTES AND LEGEND

BASE MAP
SHEET 2 OF 16
DRAWING
W-1



RECORD DRAWINGS

THESE AS-BUILT DOCUMENTS HAVE BEEN PREPARED FROM THE CONTRACTOR'S REDLINED MARK-UPS OF THE CONSTRUCTION DOCUMENTS. THE ENGINEER REVIEWING THESE RECORD DRAWINGS HAS NOT WITNESSED ALL OF THE ELEMENTS OF CONSTRUCTION AND IS NOT RESPONSIBLE FOR ERRORS OR OMISSIONS IN DATA OR CERTIFY THE ACCURACY OF THE INFORMATION PROVIDED BY THE CONTRACTOR'S AS-BUILT REDLINES.



Water District 20
KING COUNTY

APPROVED CONSTRUCTION DRAWINGS: *[Signature]* DATE: 7/5/20

DEA #25270.5

Feb 27, 2020 - 9:59am kprdb Z:\1600001-1600999\160206 (Greenbridge)\CAD\Design\02-Design Development\W20\02-08 W20 to OVERALL W.M.s.dwg

NO.	BY	DATE	DESCRIPTION
3		09/13/21	FINAL CORRECTED PLANS - PHASE 1
2		02/27/20	REVISED PER KOMD#20 COMMENTS
1		02/05/20	ORIGINAL SUBMITTAL
REVISIONS			

kpff
1601 5th Avenue, Suite 1600
Seattle, WA 98101
206.622.5822
www.kpff.com



KING COUNTY WATER DISTRICT NO. 20
WATER MAIN EXTENSION



SCALE
HORIZ: _____
VERT: _____

DES. FLD. BK. NO. PG. _____

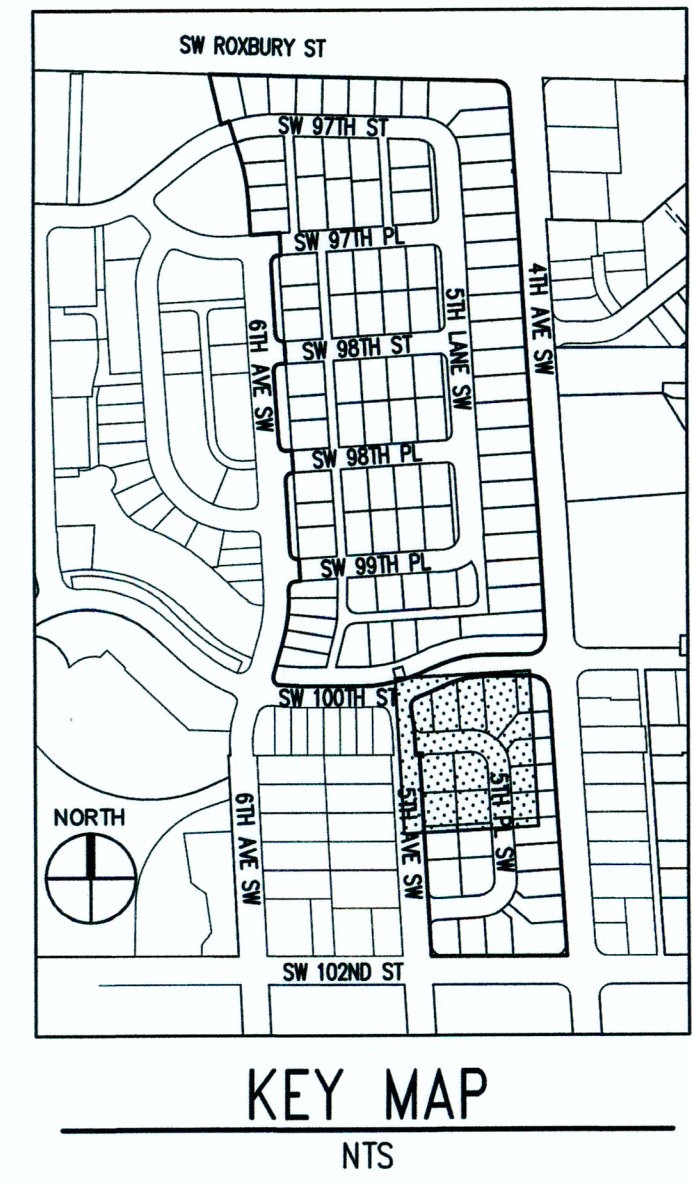
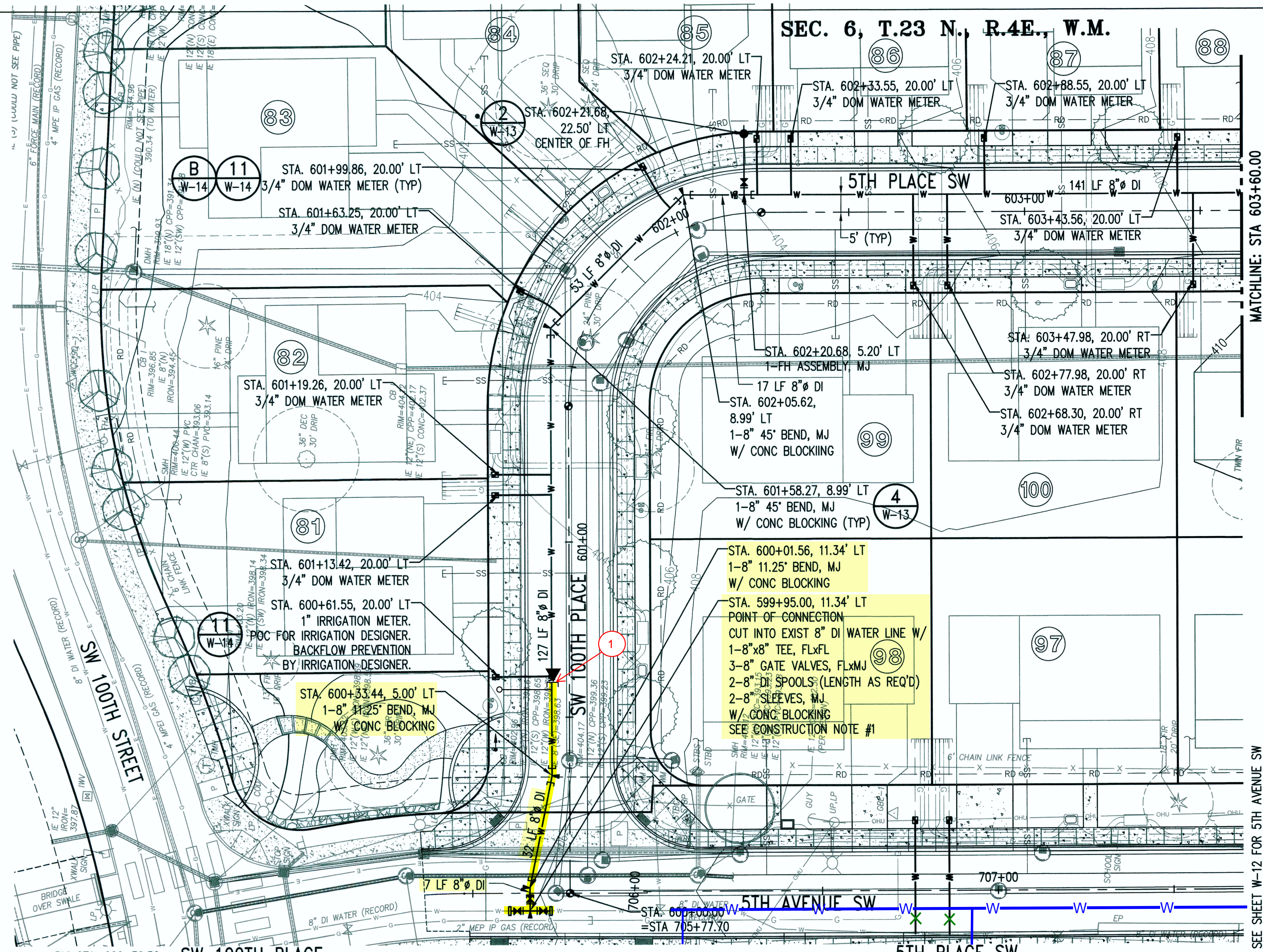
CST. FLD. BK. NO. PG. _____

DATE APPROVED	
PRINCIPAL APPROVAL	MAV
DESIGN	BJB
DRAWN	BJB
CHECKED	JCG
JOB NO.	1600206

KING COUNTY HOUSING AUTHORITY
WHITE CENTER, WASHINGTON
GREENBRIDGE DIVISION 8
OVERALL WATER KEY PLAN

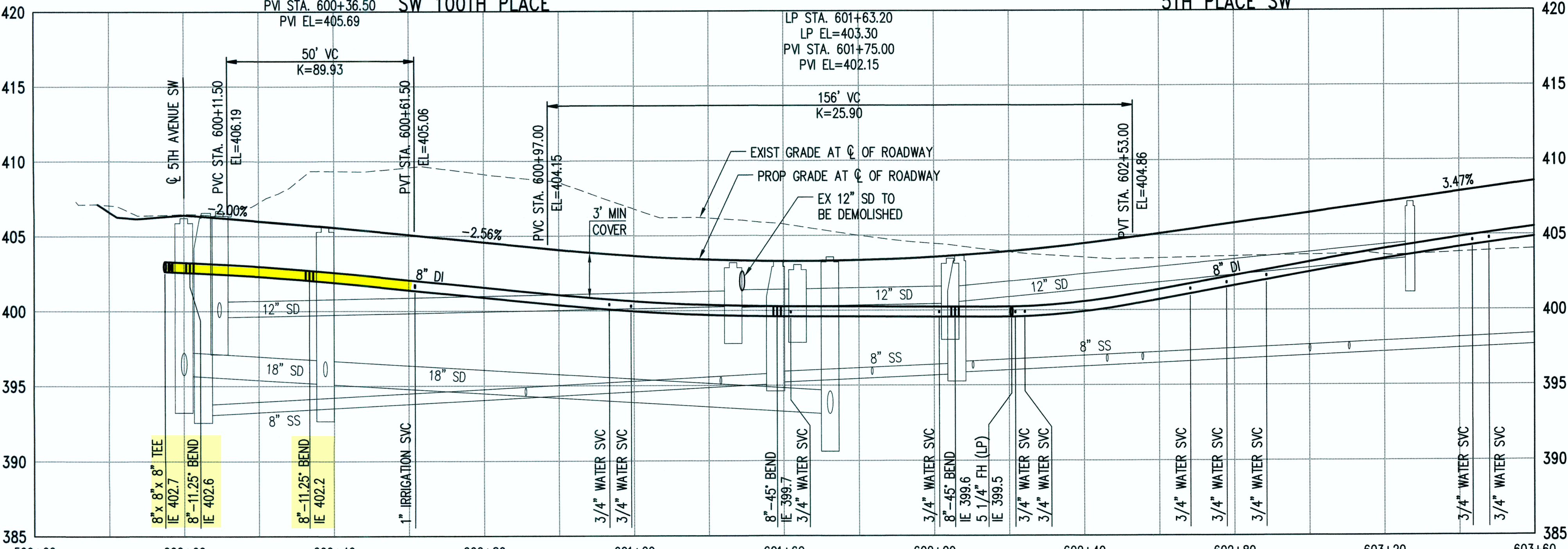
BASE MAP
SHEET 3 OF 16
DRAWING
W-1A

SEC. 6, T.23 N., R.4E., W.M.



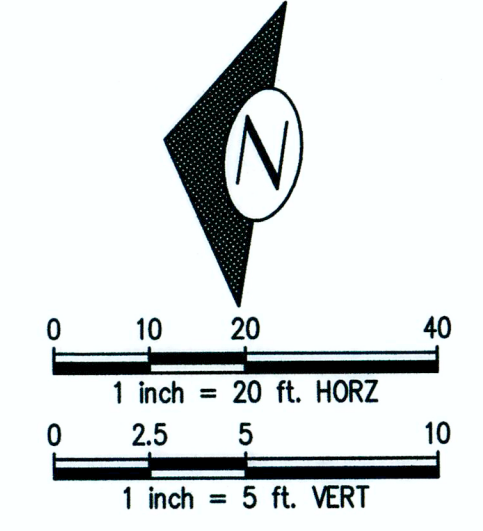
- CONSTRUCTION NOTES:**
1. PRIOR TO CONSTRUCTION, CONTRACTOR SHALL FIELD VERIFY LOCATION, SIZE AND MATERIAL OF EXISTING WATERMAIN IN THE PRESENCE OF WD#20 INSPECTOR. PREPARE A SKETCH REFLECTING SEQUENCE FOR SHUTTING DOWN AND CONNECTING TO EXIST. WATERMAINS FOR APPROVAL BY WD#20 INSPECTOR.
 2. NO CONNECTION TO THE EXISTING SYSTEM SHALL BE MADE UNTIL AFTER PRESSURE AND PURITY TEST ACCEPTANCE AND AUTHORIZATION BY WD#20.
 3. EXISTING FEATURES ARE NOT SHOWN FOR CLARITY. CONTRACTOR SHALL REFER TO THE SURVEY PLANS AND FIELD OBSERVATION FOR UTILITIES AND EXIST. STRUCTURES THAT MAY BE ENCOUNTERED DURING TRENCHING.

1
STA 600+65, 5' LT.
1-8" CAP. MJ W/ CONC BLOCKING
1-MARKER POST PER DETAIL 3, SHT W-13
1-TEMP BLOW OFF ASSEMBLY PER DETAIL 5, SHEET W-13



RECORD DRAWINGS

THESE AS-BUILT DOCUMENTS HAVE BEEN PREPARED FROM THE CONTRACTOR'S REDLINED MARK-UPS OF THE CONSTRUCTION DOCUMENTS. THE ENGINEER REVIEWING THESE RECORD DRAWINGS HAS NOT WITNESSED ALL OF THE ELEMENTS OF CONSTRUCTION AND IS NOT RESPONSIBLE FOR ERRORS OR OMISSIONS IN DATA OR CERTIFY THE ACCURACY OF THE INFORMATION PROVIDED BY THE CONTRACTOR'S AS-BUILT REDLINES.



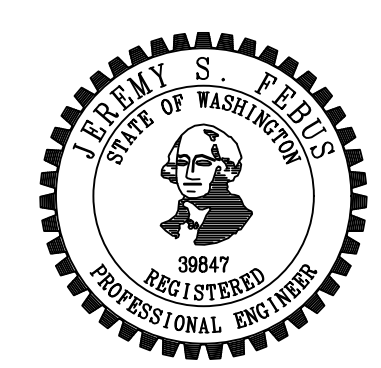
811 Call 811
two business days
before you dig

Water District
KING COUNTY
APPROVED CONSTRUCTION DRAWINGS: *Michael J. ...* DATE: *3/5/20*

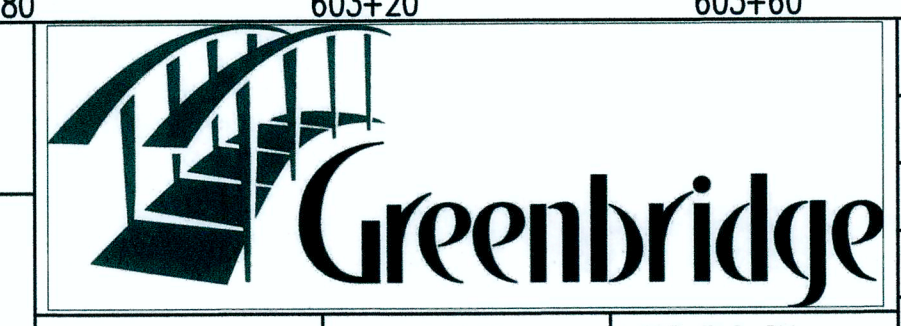
DEA #25270.5

NO.	BY	DATE	DESCRIPTION
3		09/13/21	FINAL CORRECTED PLANS - PHASE 1
2		02/27/20	REVISED PER KING20 COMMENTS
1		02/05/20	ORIGINAL SUBMITTAL

kpff
1601 5th Avenue, Suite 1600
Seattle, WA 98101
206.622.5822
www.kpff.com



KING COUNTY WATER DISTRICT NO. 20
WATER MAIN EXTENSION



SCALE
HORIZ: _____
VERT: _____

DES. FLD. BK. NO. PG. _____

CST. FLD. BK. NO. PG. _____

DATE APPROVED	PRINCIPAL APPROVAL	DESIGN	DRAWN	CHECKED	JOB NO.
	MAV	BJB	BJB	JCG	1600206

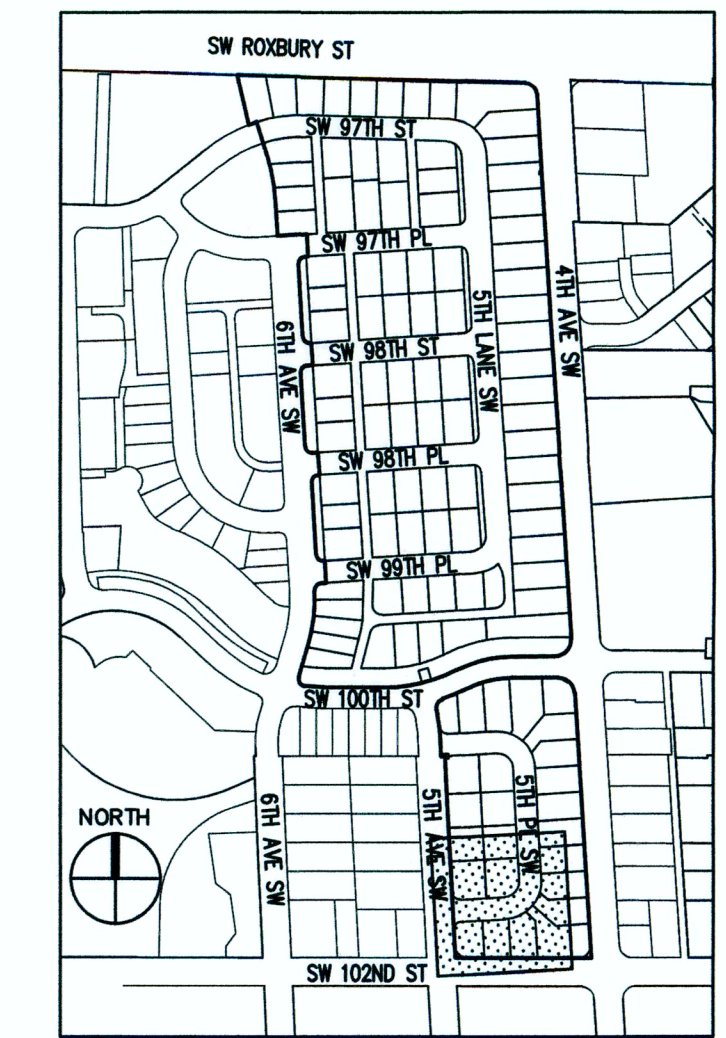
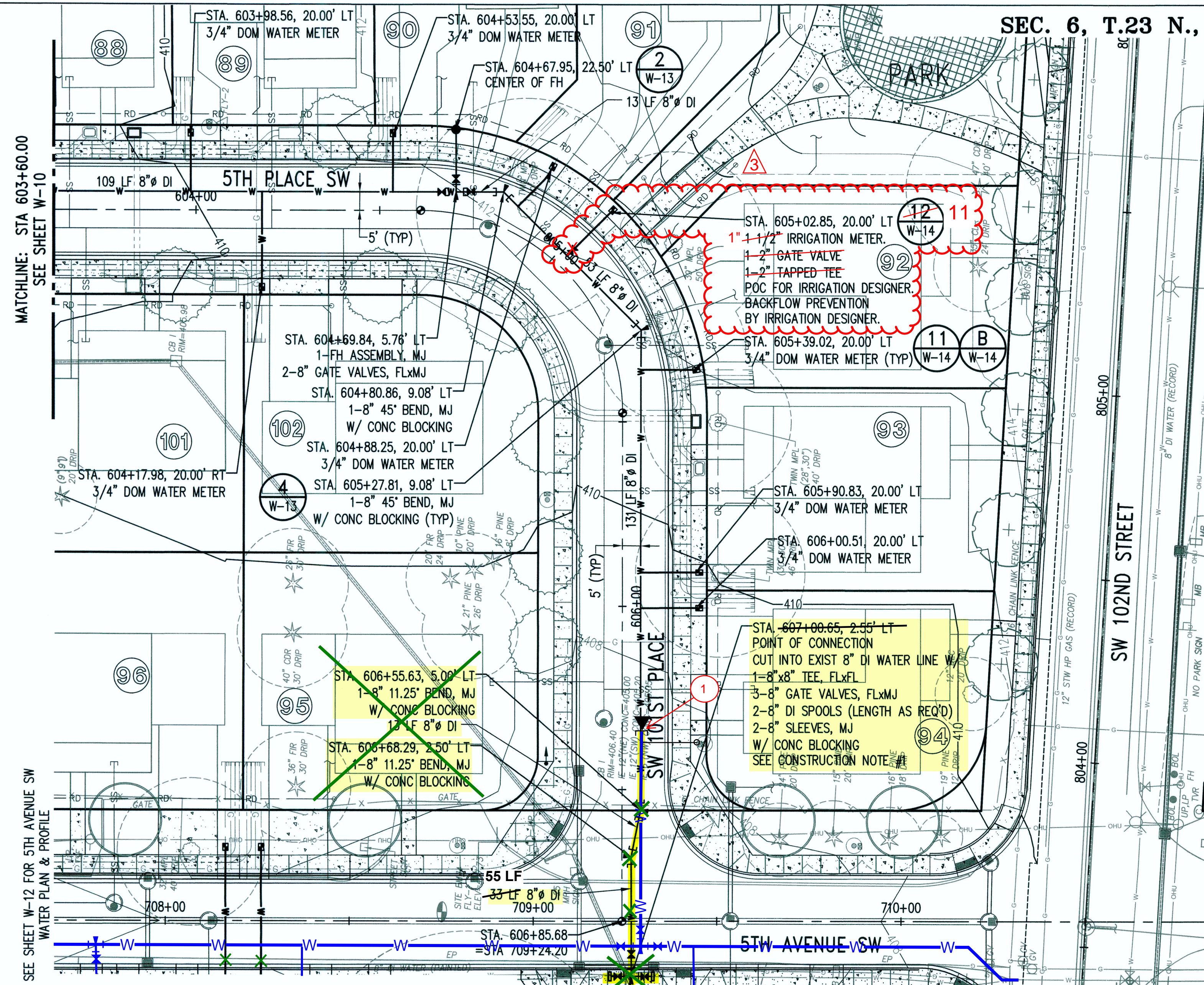
KING COUNTY HOUSING AUTHORITY
WHITE CENTER, WASHINGTON
GREENBRIDGE DIVISION 8
SW 100TH PLACE AND 5TH PLACE SW PLAN AND PROFILE

BASE MAP
SHEET 12 OF 16
DRAWING

W-10

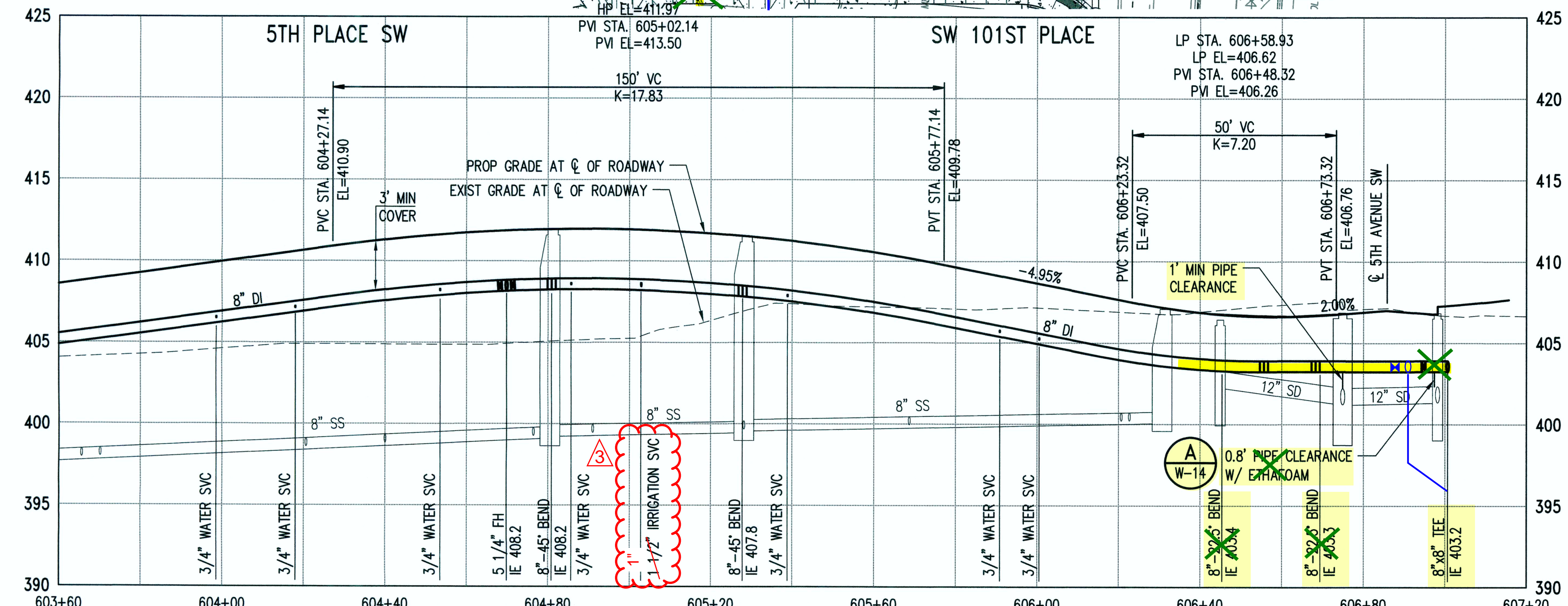
Z:\1600206 (Greenbridge) CAD\Design (2-Design Development)\W20\09-08 W20\11 ROAD E-A.dwg

SEC. 6, T.23 N., R.4E., W.M.



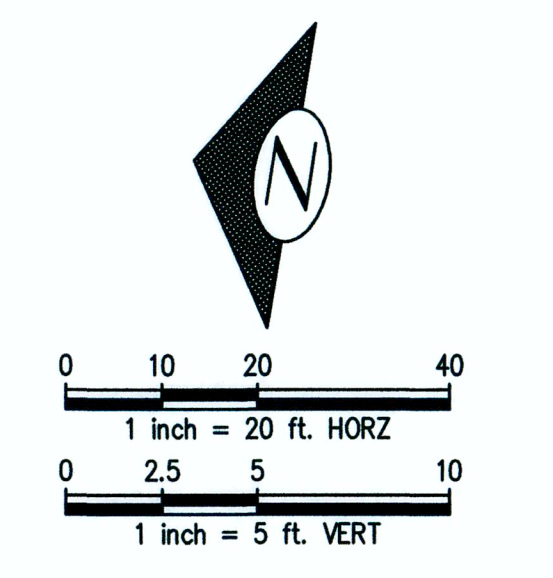
- CONSTRUCTION NOTES:**
- PRIOR TO CONSTRUCTION, CONTRACTOR SHALL FIELD VERIFY LOCATION, SIZE AND MATERIAL OF EXISTING WATERMAIN IN THE PRESENCE OF WD#20 INSPECTOR. PREPARE A SKETCH REFLECTING SEQUENCE FOR SHUTTING DOWN AND CONNECTING TO EXIST. WATERMAINS FOR APPROVAL BY WD#20 INSPECTOR.
 - NO CONNECTION TO THE EXISTING SYSTEM SHALL BE MADE UNTIL AFTER PRESSURE AND PURITY TEST ACCEPTANCE AND AUTHORIZATION BY WD#20.
 - EXISTING FEATURES ARE NOT SHOWN FOR CLARITY. CONTRACTOR SHALL REFER TO THE SURVEY PLANS AND FIELD OBSERVATION FOR UTILITIES AND EXIST. STRUCTURES THAT MAY BE ENCOUNTERED DURING TRENCHING.

① STA 606+14, 5' LT.
1-8" CAP. MJ W/ CONC BLOCKING
1-MARKER POST PER DETAIL 3, SHT W-13
1- TEMP BLOW OFF ASSEMBLY PER DETAIL 5, SHEET W-13



RECORD DRAWINGS

THESE AS-BUILT DOCUMENTS HAVE BEEN PREPARED FROM THE CONTRACTOR'S REDLINED MARK-UPS OF THE CONSTRUCTION DOCUMENTS. THE ENGINEER REVIEWING THESE RECORD DRAWINGS HAS NOT WITNESSED ALL OF THE ELEMENTS OF CONSTRUCTION AND IS NOT RESPONSIBLE FOR ERRORS OR OMISSIONS IN DATA OR CERTIFY THE ACCURACY OF THE INFORMATION PROVIDED BY THE CONTRACTOR'S AS-BUILT REDLINES.



811 Call 811
two business days before you dig

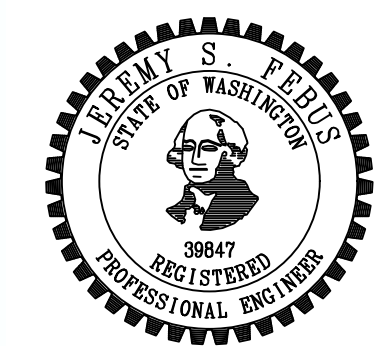
Water District 20
KING COUNTY
APPROVED CONSTRUCTION DRAWINGS: *Michael J. Moore* DATE: 3/5/20

DEA #25270.5

Feb. 27, 2020 - 1:07pm
Z:\16002001-16002006 (Greenbridge)\CAD (Design)\02-Design Development\WDC20\09-08 WDC20 11 ROAD E-N.dwg

NO.	BY	DATE	DESCRIPTION
4		09/13/21	FINAL CORRECTED PLANS - PHASE 1
3		04/27/20	IRRIGATION METER SIZE REVISION
2		02/27/20	REVISED PER KING COUNTY COMMENTS
1		02/05/20	ORIGINAL SUBMITTAL

kpff
1601 5th Avenue, Suite 1600
Seattle, WA 98101
206.622.5822
www.kpff.com



KING COUNTY WATER DISTRICT NO. 20
WATER MAIN EXTENSION

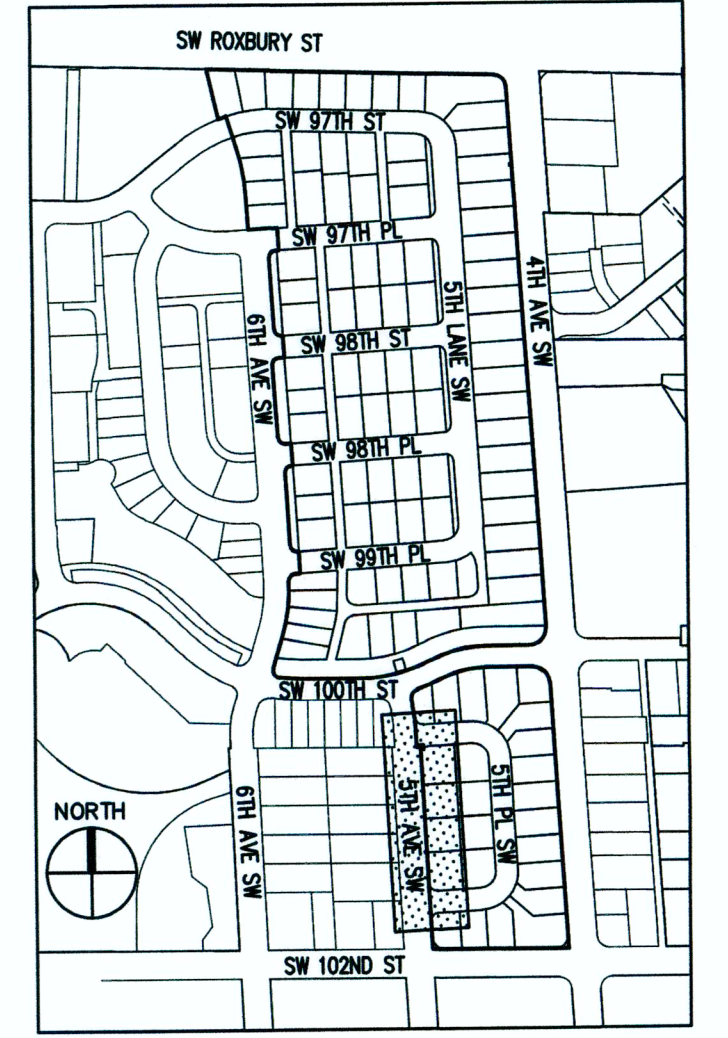
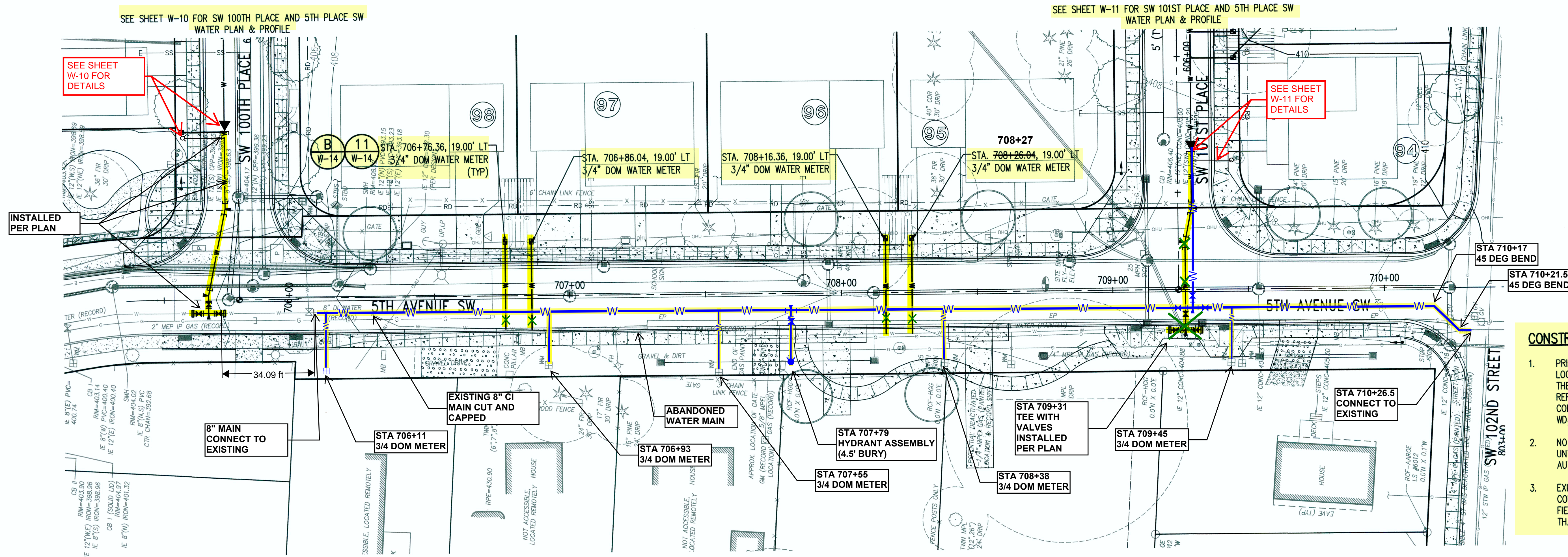


DATE APPROVED	MAV
PRINCIPAL APPROVAL	MAV
DESIGN	BJB
DRAWN	BJB
CHECKED	JCG
JOB NO.	1600206

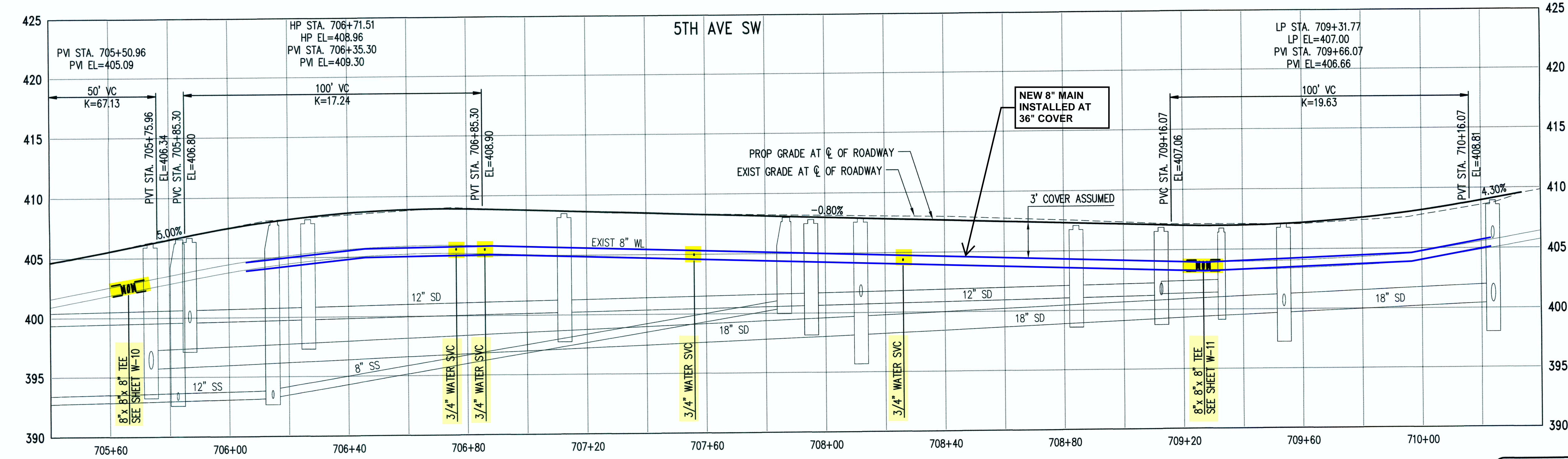
KING COUNTY HOUSING AUTHORITY
WHITE CENTER, WASHINGTON
GREENBRIDGE DIVISION 8
5TH PLACE SW AND SW 101ST PLACE PLAN AND PROFILE

BASE MAP
SHEET 13 OF 16
DRAWING

W-11

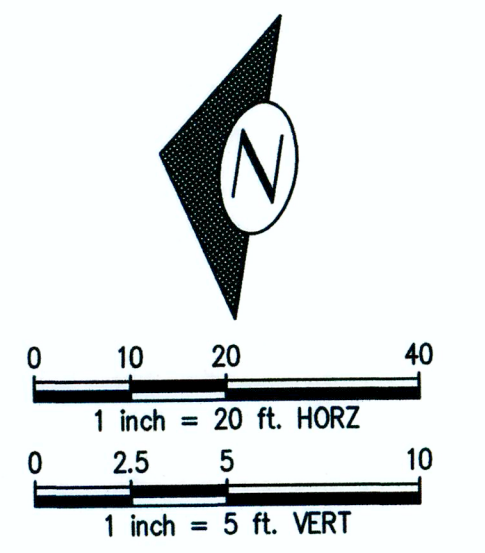


- CONSTRUCTION NOTES:**
- PRIOR TO CONSTRUCTION, CONTRACTOR SHALL FIELD VERIFY LOCATION, SIZE AND MATERIAL OF EXISTING WATERMAIN IN THE PRESENCE OF WD#20 INSPECTOR. PREPARE A SKETCH REFLECTING SEQUENCE FOR SHUTTING DOWN AND CONNECTING TO EXIST. WATERMAINS FOR APPROVAL BY WD#20 INSPECTOR.
 - NO CONNECTION TO THE EXISTING SYSTEM SHALL BE MADE UNTIL AFTER PRESSURE AND PURITY TEST ACCEPTANCE AND AUTHORIZATION BY WD#20.
 - EXISTING FEATURES ARE NOT SHOWN FOR CLARITY. CONTRACTOR SHALL REFER TO THE SURVEY PLANS AND FIELD OBSERVATION FOR UTILITIES AND EXIST. STRUCTURES THAT MAY BE ENCOUNTERED DURING TRENCHING.



RECORD DRAWINGS

THESE AS-BUILT DOCUMENTS HAVE BEEN PREPARED FROM THE CONTRACTOR'S REDLINED MARK-UPS OF THE CONSTRUCTION DOCUMENTS. THE ENGINEER REVIEWING THESE RECORD DRAWINGS HAS NOT WITNESSED ALL OF THE ELEMENTS OF CONSTRUCTION AND IS NOT RESPONSIBLE FOR ERRORS OR OMISSIONS IN DATA OR CERTIFY THE ACCURACY OF THE INFORMATION PROVIDED BY THE CONTRACTOR'S AS-BUILT REDLINES.



811 Call 811 two business days before you dig

Water District 20
KING COUNTY
APPROVED CONSTRUCTION DRAWINGS: *Michael D. Muth* DATE: 3/5/20

DEA #25270.5

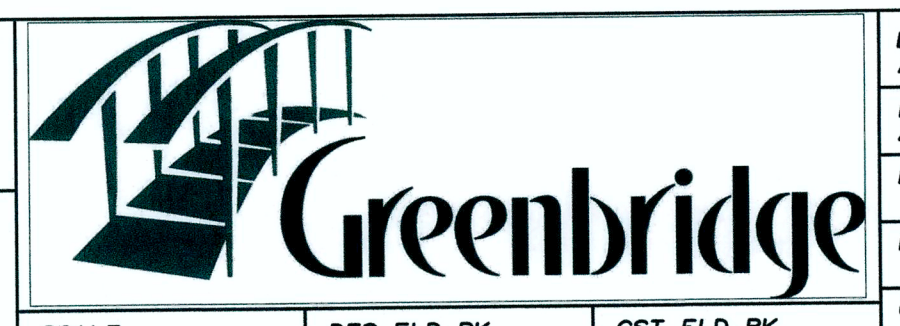
Z:\1602001-1602006 (Greenbridge)\1602006 Design\1602006 Development\1602006-08-WD20 11 ROAD E-N.dwg

NO.	BY	DATE	DESCRIPTION
3		09/13/21	FINAL CORRECTED PLANS - PHASE 1
2		02/27/20	REVISED PER KOM#20 COMMENTS
1		02/05/20	ORIGINAL SUBMITTAL

kpff
1601 5th Avenue, Suite 1600
Seattle, WA 98101
206.622.5822
www.kpff.com



KING COUNTY WATER DISTRICT NO. 20
WATER MAIN EXTENSION

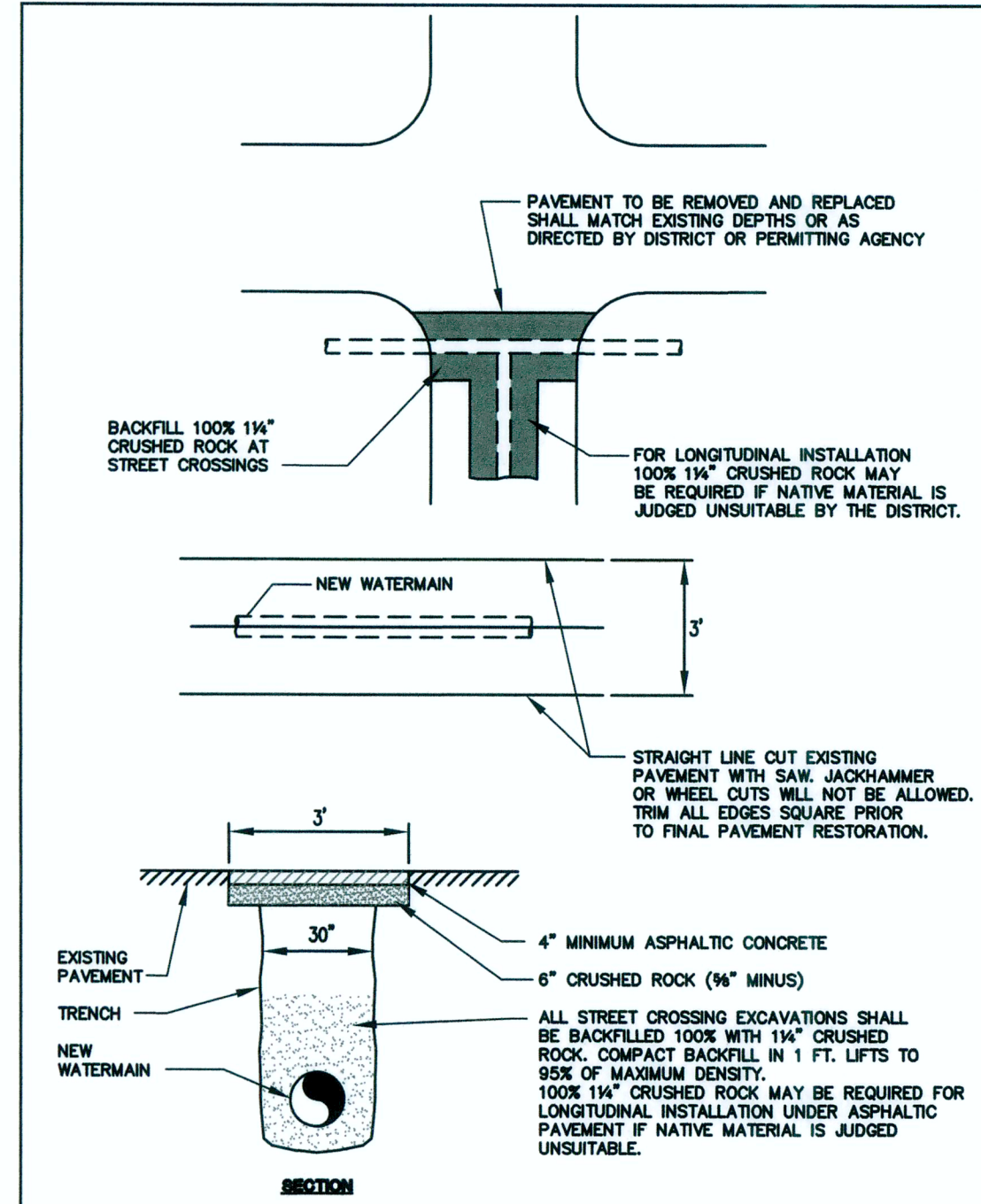


SCALE: HORIZ: VERT: DES. FLD. BK. NO. PG. CST. FLD. BK. NO. PG.

DATE APPROVED	MAV
PRINCIPAL APPROVAL	
DESIGN	BJB
DRAWN	BJB
CHECKED	JCC
JOB NO.	1600206

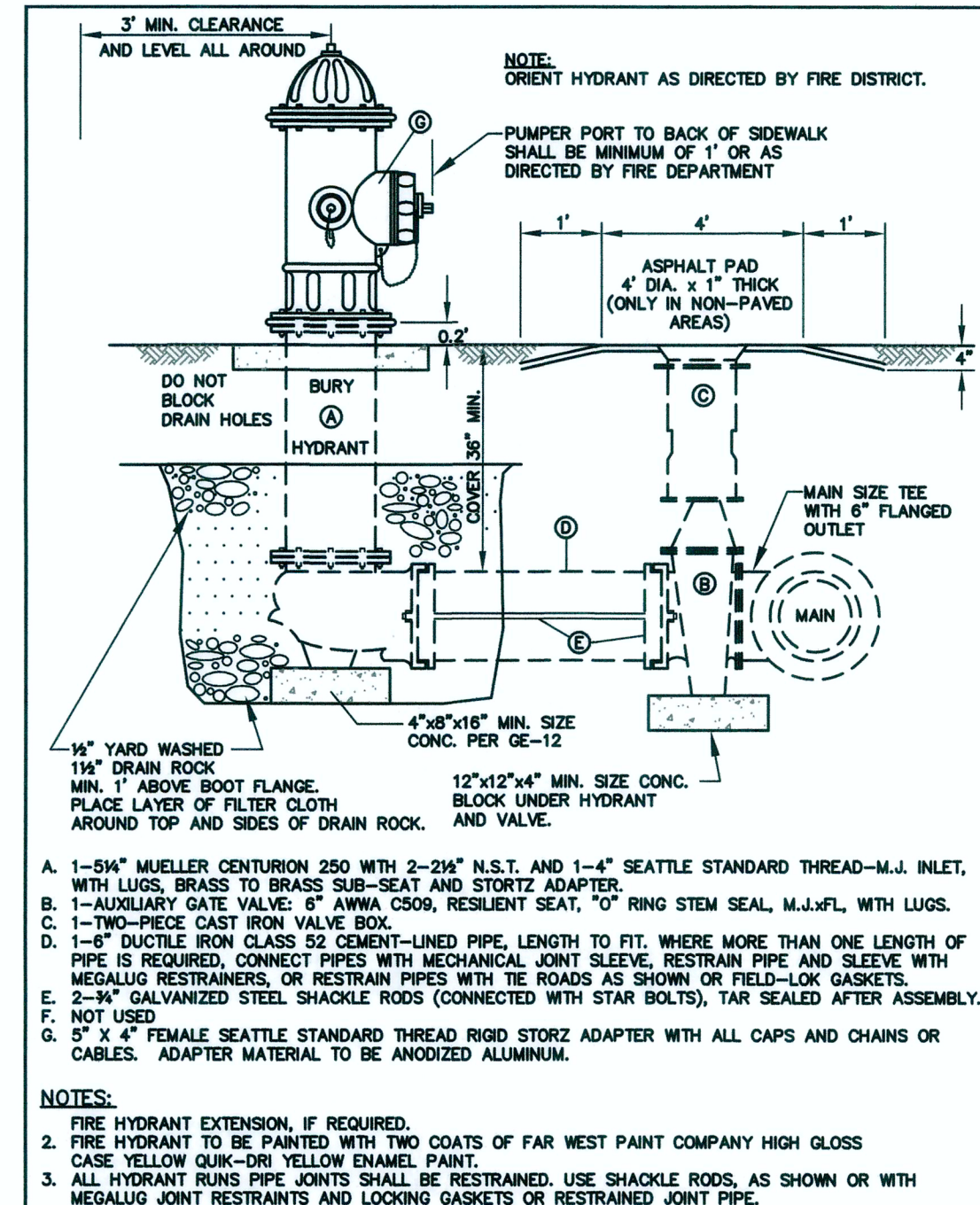
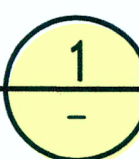
KING COUNTY HOUSING AUTHORITY
WHITE CENTER, WASHINGTON
GREENBRIDGE DIVISION 8
5TH AVENUE SW PLAN AND PROFILE

BASE MAP SHEET 14 OF 16 DRAWING **W-12**



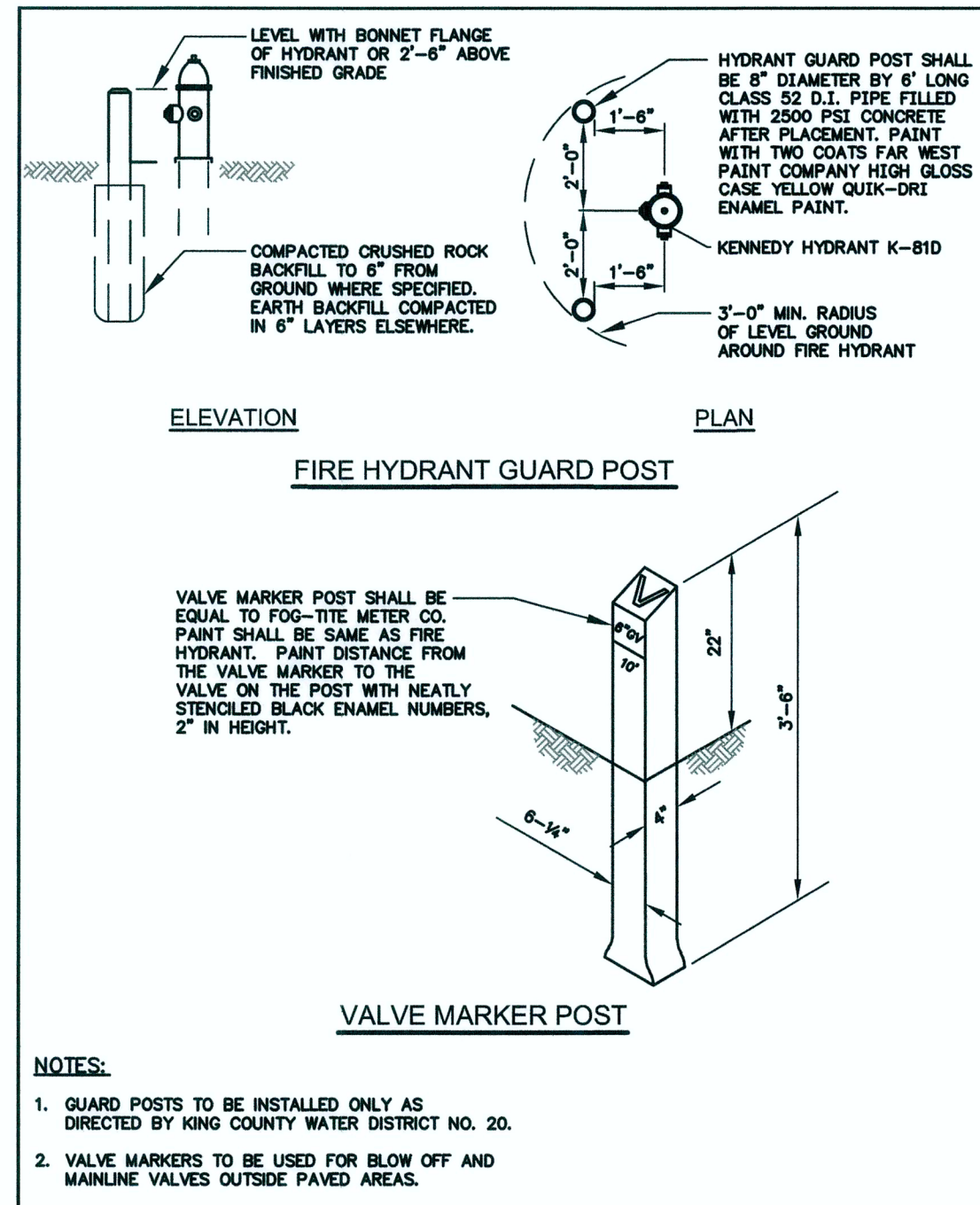
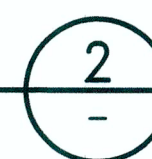
PAGE		STANDARD DETAIL PAVEMENT RESTORATION			
11255 Midland Way, Suite 300 Bellevue, WA 98003 p. 425.827.2014 f. 425.827.5043 cml@structuralplanning.com	11255 Midland Way, Suite 300 Bellevue, WA 98003 p. 425.827.2014 f. 425.827.5043 cml@structuralplanning.com	11255 Midland Way, Suite 300 Bellevue, WA 98003 p. 425.827.2014 f. 425.827.5043 cml@structuralplanning.com	11255 Midland Way, Suite 300 Bellevue, WA 98003 p. 425.827.2014 f. 425.827.5043 cml@structuralplanning.com	11255 Midland Way, Suite 300 Bellevue, WA 98003 p. 425.827.2014 f. 425.827.5043 cml@structuralplanning.com	11255 Midland Way, Suite 300 Bellevue, WA 98003 p. 425.827.2014 f. 425.827.5043 cml@structuralplanning.com

PAVEMENT RESTORATION
NTS



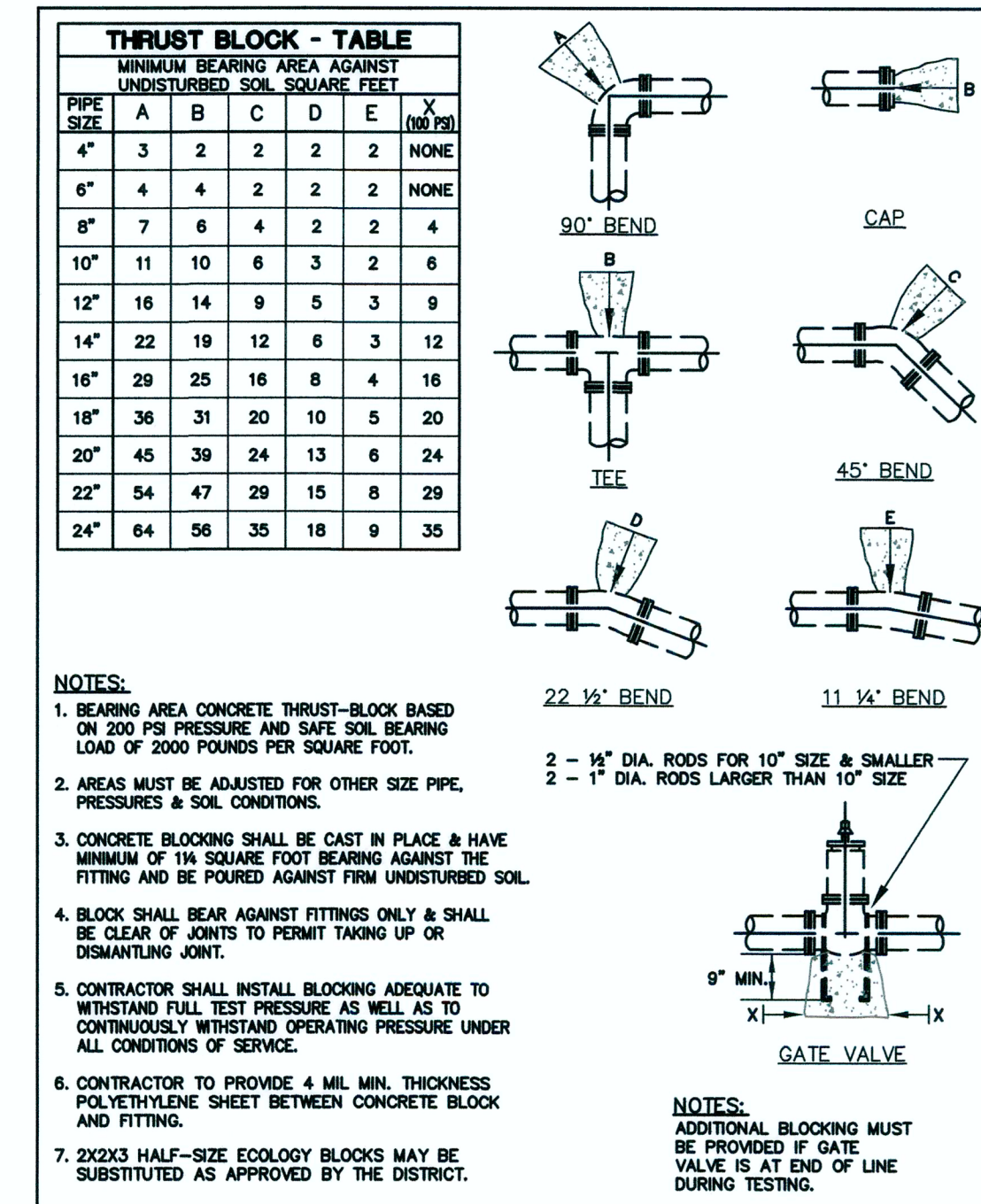
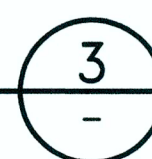
PAGE		STANDARD DETAIL SHORT SIDE FIRE HYDRANT ASSEMBLY			
11255 Midland Way, Suite 300 Bellevue, WA 98003 p. 425.827.2014 f. 425.827.5043 cml@structuralplanning.com	11255 Midland Way, Suite 300 Bellevue, WA 98003 p. 425.827.2014 f. 425.827.5043 cml@structuralplanning.com	11255 Midland Way, Suite 300 Bellevue, WA 98003 p. 425.827.2014 f. 425.827.5043 cml@structuralplanning.com	11255 Midland Way, Suite 300 Bellevue, WA 98003 p. 425.827.2014 f. 425.827.5043 cml@structuralplanning.com	11255 Midland Way, Suite 300 Bellevue, WA 98003 p. 425.827.2014 f. 425.827.5043 cml@structuralplanning.com	11255 Midland Way, Suite 300 Bellevue, WA 98003 p. 425.827.2014 f. 425.827.5043 cml@structuralplanning.com

SHORT SIDE FIRE HYDRANT ASSEMBLY
NTS



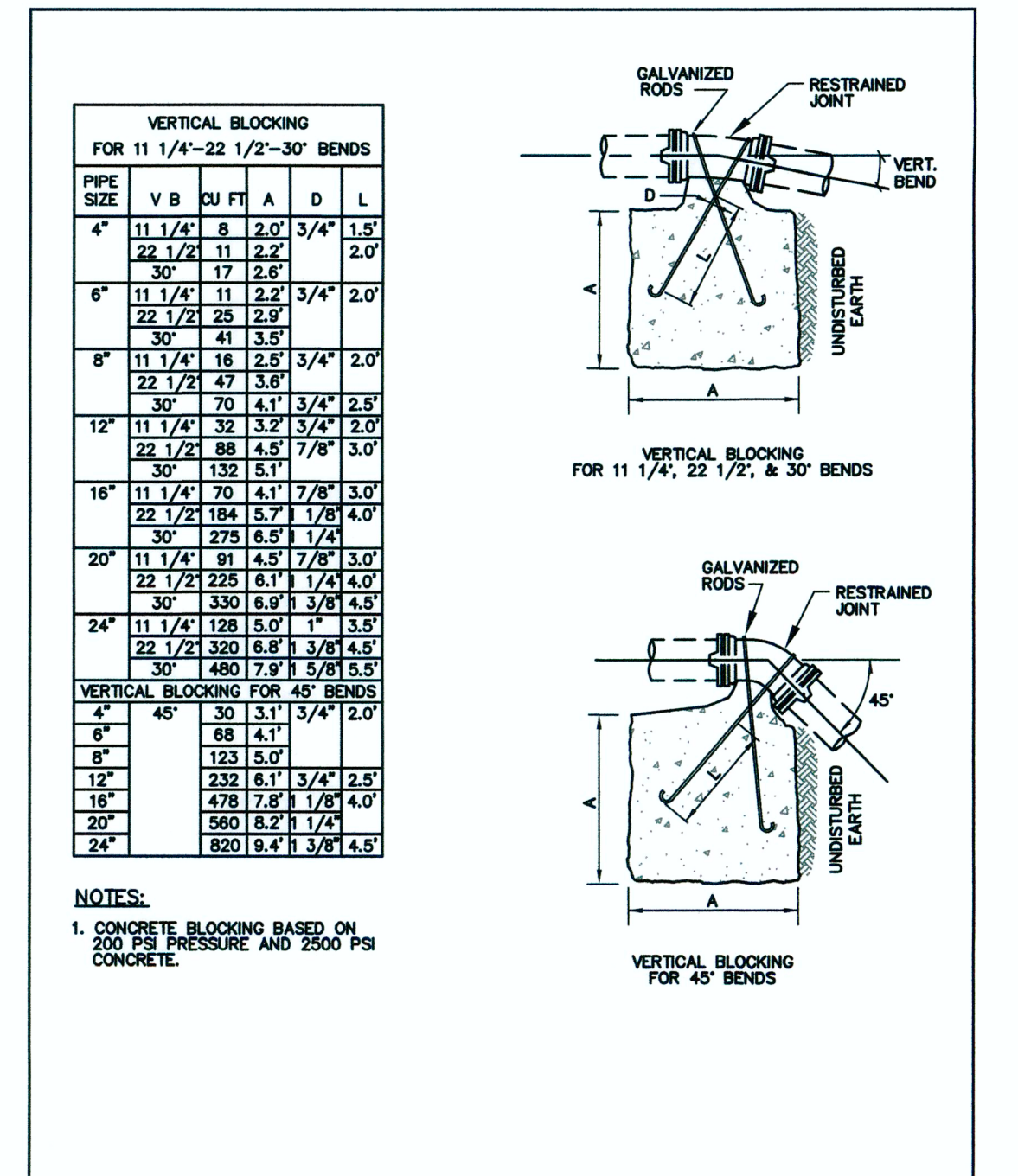
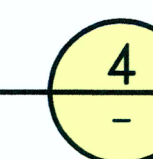
PAGE		STANDARD DETAIL FIRE HYDRANT GUARD POST AND VALVE MARKER POST			
11255 Midland Way, Suite 300 Bellevue, WA 98003 p. 425.827.2014 f. 425.827.5043 cml@structuralplanning.com	11255 Midland Way, Suite 300 Bellevue, WA 98003 p. 425.827.2014 f. 425.827.5043 cml@structuralplanning.com	11255 Midland Way, Suite 300 Bellevue, WA 98003 p. 425.827.2014 f. 425.827.5043 cml@structuralplanning.com	11255 Midland Way, Suite 300 Bellevue, WA 98003 p. 425.827.2014 f. 425.827.5043 cml@structuralplanning.com	11255 Midland Way, Suite 300 Bellevue, WA 98003 p. 425.827.2014 f. 425.827.5043 cml@structuralplanning.com	11255 Midland Way, Suite 300 Bellevue, WA 98003 p. 425.827.2014 f. 425.827.5043 cml@structuralplanning.com

FIRE HYDRANT GUARD POST AND VALVE MARKER POST
NTS



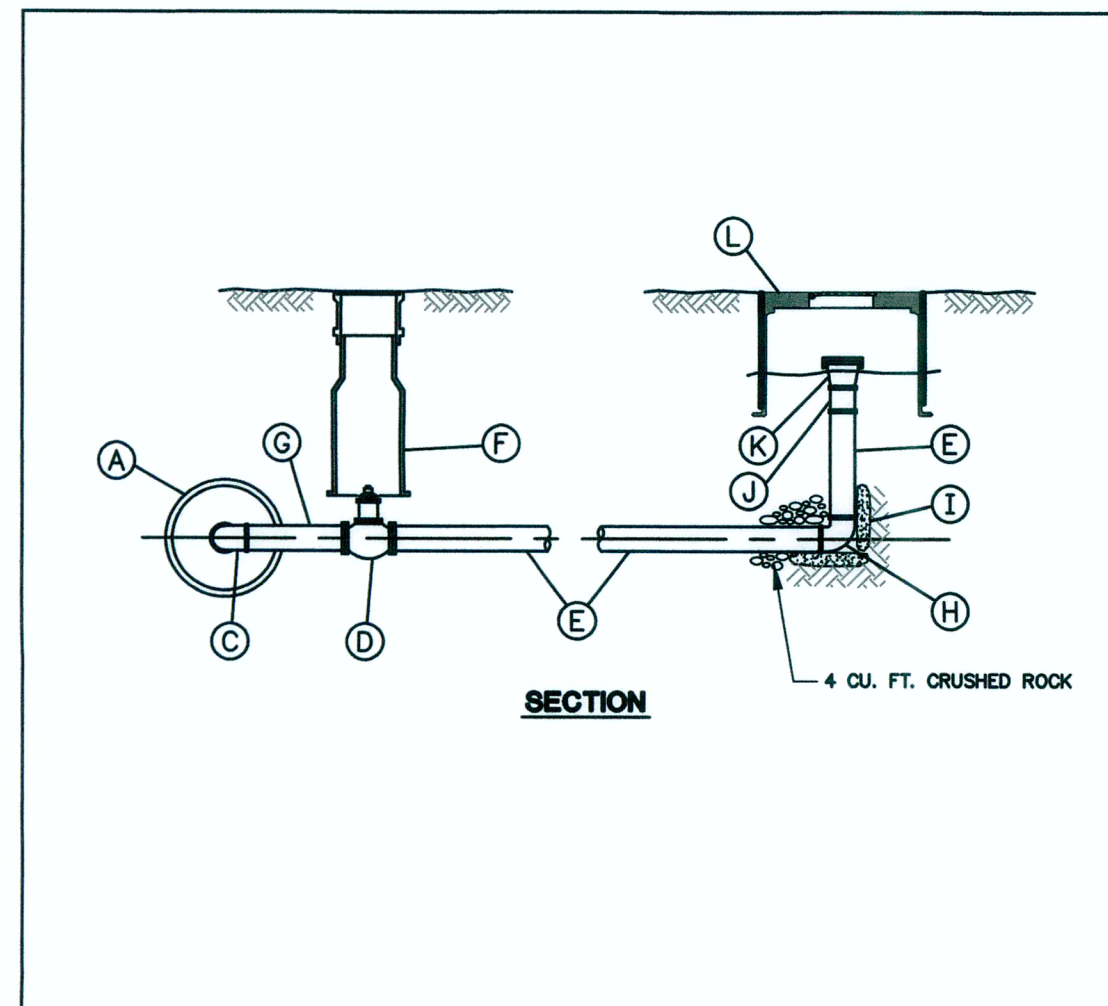
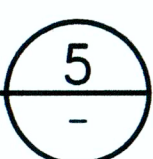
PAGE		STANDARD DETAIL HORIZONTAL CONCRETE BLOCKING			
11255 Midland Way, Suite 300 Bellevue, WA 98003 p. 425.827.2014 f. 425.827.5043 cml@structuralplanning.com	11255 Midland Way, Suite 300 Bellevue, WA 98003 p. 425.827.2014 f. 425.827.5043 cml@structuralplanning.com	11255 Midland Way, Suite 300 Bellevue, WA 98003 p. 425.827.2014 f. 425.827.5043 cml@structuralplanning.com	11255 Midland Way, Suite 300 Bellevue, WA 98003 p. 425.827.2014 f. 425.827.5043 cml@structuralplanning.com	11255 Midland Way, Suite 300 Bellevue, WA 98003 p. 425.827.2014 f. 425.827.5043 cml@structuralplanning.com	11255 Midland Way, Suite 300 Bellevue, WA 98003 p. 425.827.2014 f. 425.827.5043 cml@structuralplanning.com

HORIZONTAL CONCRETE BLOCKING
NTS



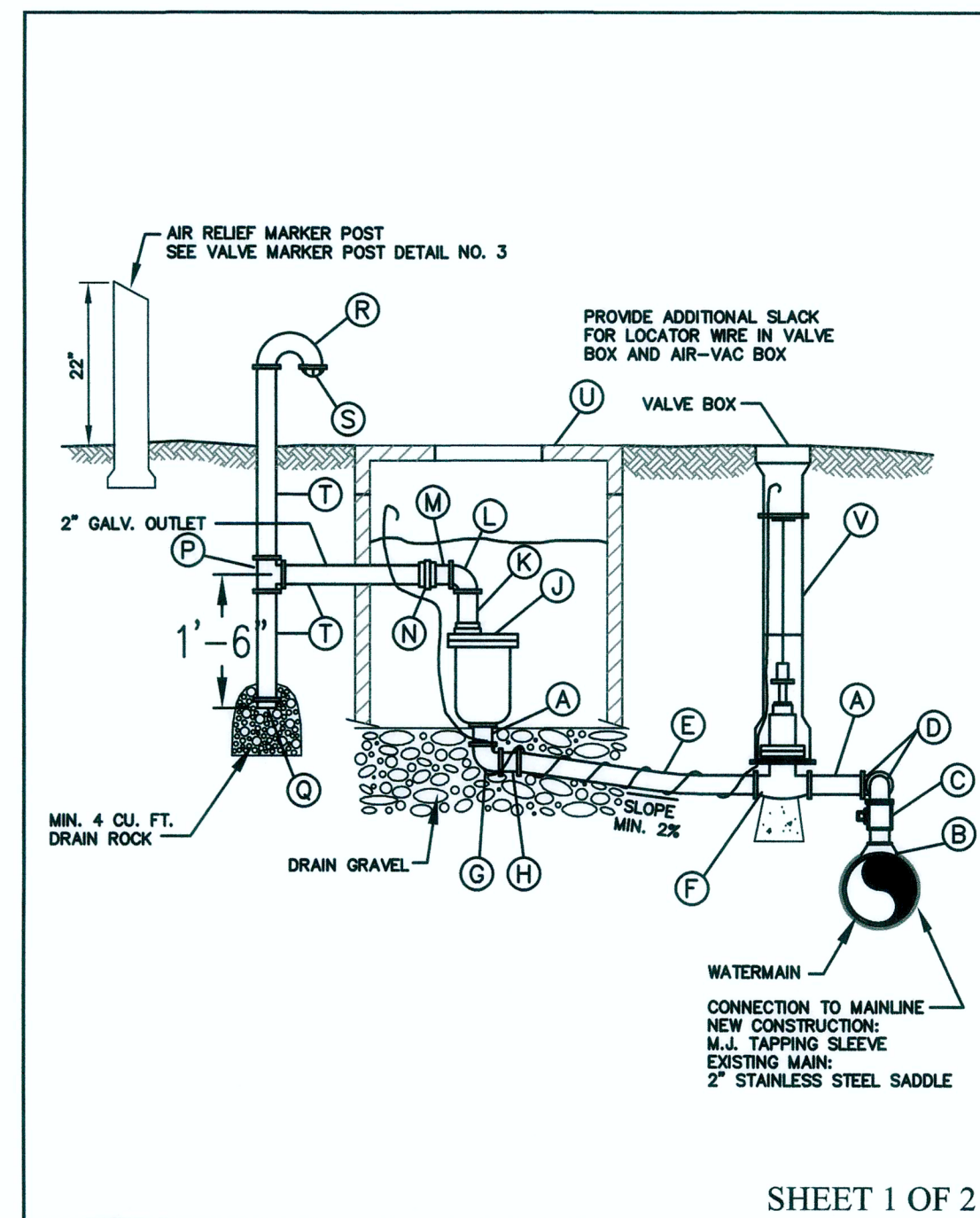
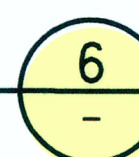
PAGE		STANDARD DETAIL VERTICAL CONCRETE BLOCKING			
11255 Midland Way, Suite 300 Bellevue, WA 98003 p. 425.827.2014 f. 425.827.5043 cml@structuralplanning.com	11255 Midland Way, Suite 300 Bellevue, WA 98003 p. 425.827.2014 f. 425.827.5043 cml@structuralplanning.com	11255 Midland Way, Suite 300 Bellevue, WA 98003 p. 425.827.2014 f. 425.827.5043 cml@structuralplanning.com	11255 Midland Way, Suite 300 Bellevue, WA 98003 p. 425.827.2014 f. 425.827.5043 cml@structuralplanning.com	11255 Midland Way, Suite 300 Bellevue, WA 98003 p. 425.827.2014 f. 425.827.5043 cml@structuralplanning.com	11255 Midland Way, Suite 300 Bellevue, WA 98003 p. 425.827.2014 f. 425.827.5043 cml@structuralplanning.com

VERTICAL CONCRETE BLOCKING
NTS



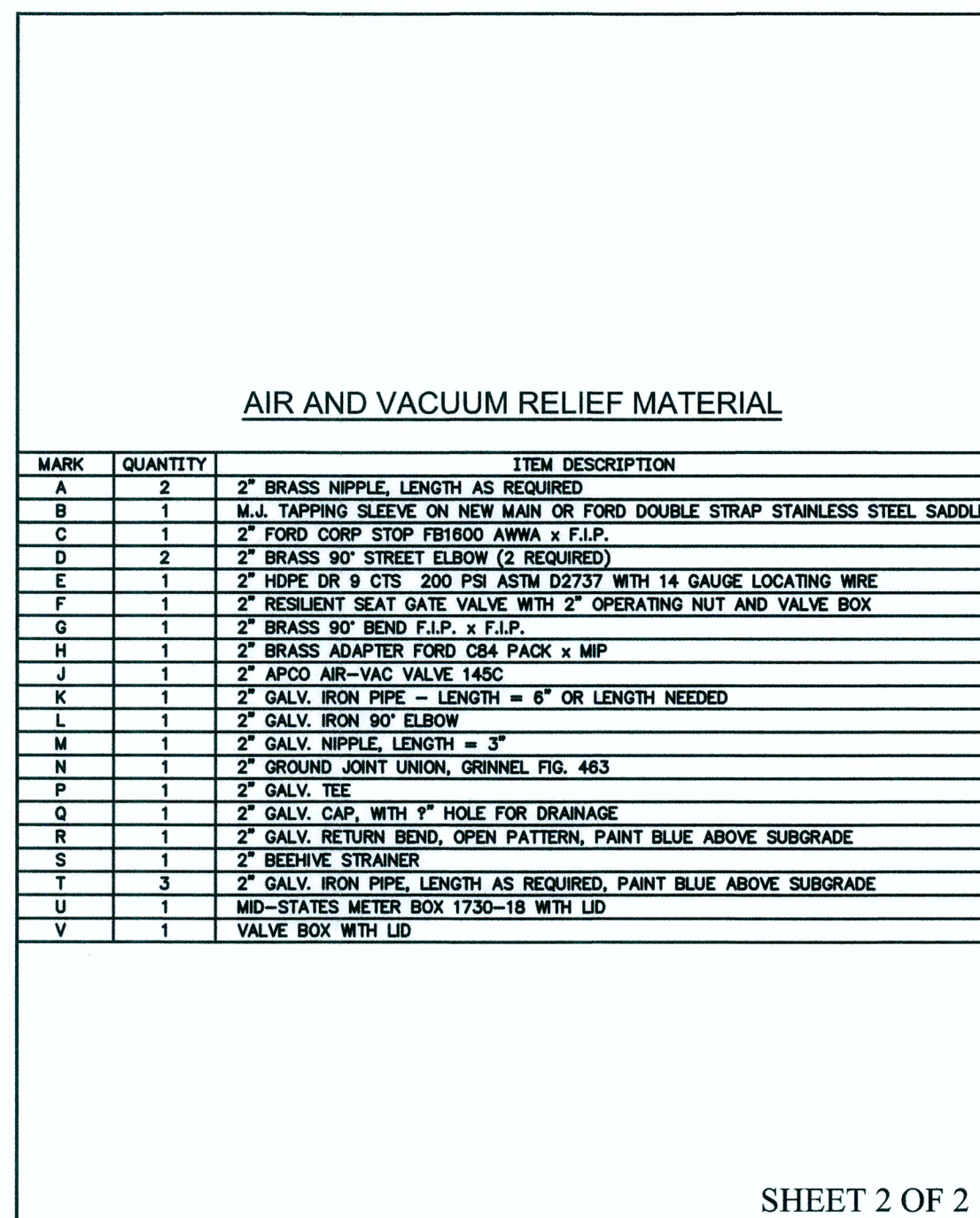
PAGE		STANDARD DETAIL BLOW OFF ASSEMBLY			
11255 Midland Way, Suite 300 Bellevue, WA 98003 p. 425.827.2014 f. 425.827.5043 cml@structuralplanning.com	11255 Midland Way, Suite 300 Bellevue, WA 98003 p. 425.827.2014 f. 425.827.5043 cml@structuralplanning.com	11255 Midland Way, Suite 300 Bellevue, WA 98003 p. 425.827.2014 f. 425.827.5043 cml@structuralplanning.com	11255 Midland Way, Suite 300 Bellevue, WA 98003 p. 425.827.2014 f. 425.827.5043 cml@structuralplanning.com	11255 Midland Way, Suite 300 Bellevue, WA 98003 p. 425.827.2014 f. 425.827.5043 cml@structuralplanning.com	11255 Midland Way, Suite 300 Bellevue, WA 98003 p. 425.827.2014 f. 425.827.5043 cml@structuralplanning.com

BLOW OFF ASSEMBLY
NTS



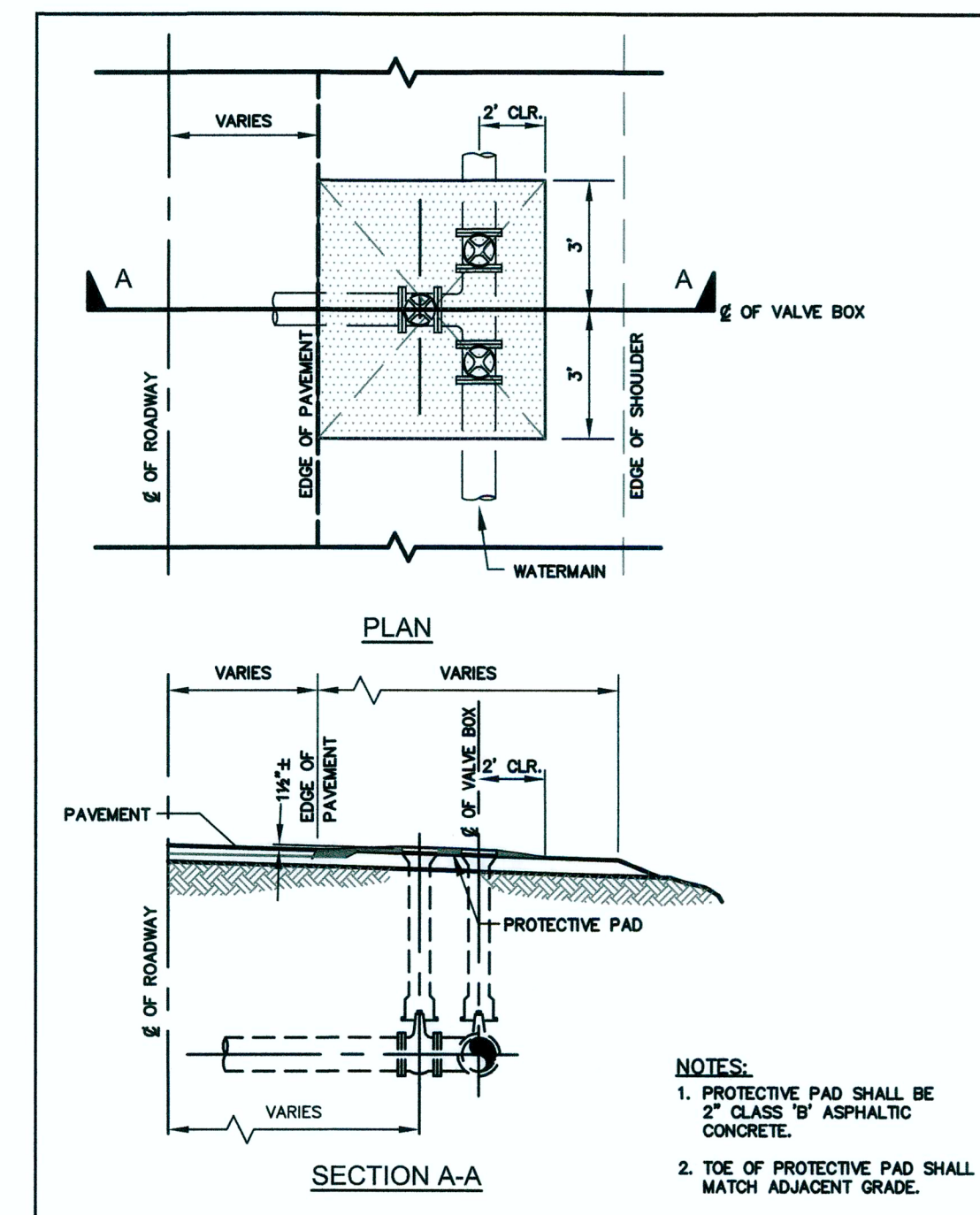
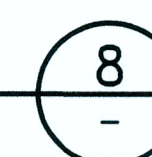
PAGE		STANDARD DETAIL AIR VACUUM AND RELIEF VALVE ASSEMBLY			
11255 Midland Way, Suite 300 Bellevue, WA 98003 p. 425.827.2014 f. 425.827.5043 cml@structuralplanning.com	11255 Midland Way, Suite 300 Bellevue, WA 98003 p. 425.827.2014 f. 425.827.5043 cml@structuralplanning.com	11255 Midland Way, Suite 300 Bellevue, WA 98003 p. 425.827.2014 f. 425.827.5043 cml@structuralplanning.com	11255 Midland Way, Suite 300 Bellevue, WA 98003 p. 425.827.2014 f. 425.827.5043 cml@structuralplanning.com	11255 Midland Way, Suite 300 Bellevue, WA 98003 p. 425.827.2014 f. 425.827.5043 cml@structuralplanning.com	11255 Midland Way, Suite 300 Bellevue, WA 98003 p. 425.827.2014 f. 425.827.5043 cml@structuralplanning.com

AIR VACUUM AND RELIEF VALVE ASSEMBLY
NTS



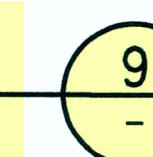
PAGE		STANDARD DETAIL AIR VACUUM AND RELIEF VALVE ASSEMBLY			
11255 Midland Way, Suite 300 Bellevue, WA 98003 p. 425.827.2014 f. 425.827.5043 cml@structuralplanning.com	11255 Midland Way, Suite 300 Bellevue, WA 98003 p. 425.827.2014 f. 425.827.5043 cml@structuralplanning.com	11255 Midland Way, Suite 300 Bellevue, WA 98003 p. 425.827.2014 f. 425.827.5043 cml@structuralplanning.com	11255 Midland Way, Suite 300 Bellevue, WA 98003 p. 425.827.2014 f. 425.827.5043 cml@structuralplanning.com	11255 Midland Way, Suite 300 Bellevue, WA 98003 p. 425.827.2014 f. 425.827.5043 cml@structuralplanning.com	11255 Midland Way, Suite 300 Bellevue, WA 98003 p. 425.827.2014 f. 425.827.5043 cml@structuralplanning.com

AIR VACUUM AND RELIEF VALVE ASSEMBLY
NTS



PAGE		STANDARD DETAIL VALVE BOX PROTECTIVE PAD			
11255 Midland Way, Suite 300 Bellevue, WA 98003 p. 425.827.2014 f. 425.827.5043 cml@structuralplanning.com	11255 Midland Way, Suite 300 Bellevue, WA 98003 p. 425.827.2014 f. 425.827.5043 cml@structuralplanning.com	11255 Midland Way, Suite 300 Bellevue, WA 98003 p. 425.827.2014 f. 425.827.5043 cml@structuralplanning.com	11255 Midland Way, Suite 300 Bellevue, WA 98003 p. 425.827.2014 f. 425.827.5043 cml@structuralplanning.com	11255 Midland Way, Suite 300 Bellevue, WA 98003 p. 425.827.2014 f. 425.827.5043 cml@structuralplanning.com	11255 Midland Way, Suite 300 Bellevue, WA 98003 p. 425.827.2014 f. 425.827.5043 cml@structuralplanning.com

VALVE BOX PROTECTIVE PAD
NTS



RECORD DRAWINGS

THESE AS-BUILT DOCUMENTS HAVE BEEN PREPARED FROM THE CONTRACTOR'S REDLINED MARK-UPS OF THE CONSTRUCTION DOCUMENTS. THE ENGINEER REVIEWING THESE RECORD DRAWINGS HAS NOT WITNESSED ALL OF THE ELEMENTS OF CONSTRUCTION AND IS NOT RESPONSIBLE FOR ERRORS OR OMISSIONS IN DATA OR CERTIFY THE ACCURACY OF THE INFORMATION PROVIDED BY THE CONTRACTOR'S AS-BUILT REDLINES.

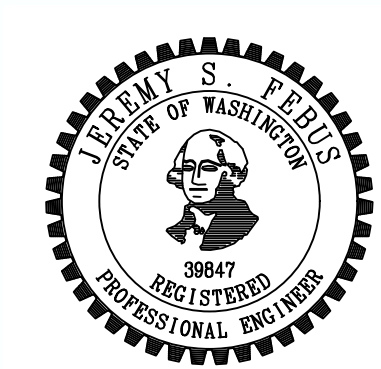
811 Call 811
two business days
before you dig

Water District
KING COUNTY
APPROVED CONSTRUCTION DRAWINGS: *Richard D. [Signature]* DATE: 3/5/20
DEA #25270.5

Z:\160001-160206 (Greenbridge)\CADD\Design\02-Design Development\W-13-01-01-10-01-12-DTL-6.dwg Feb 27, 2020 - 10:02am bfab

3	09/13/21	FINAL CORRECTED PLANS - PHASE 1
2	02/27/20	REVISED PER KOM#20 COMMENTS
1	02/05/20	ORIGINAL SUBMITTAL
NO.	DATE	DESCRIPTION

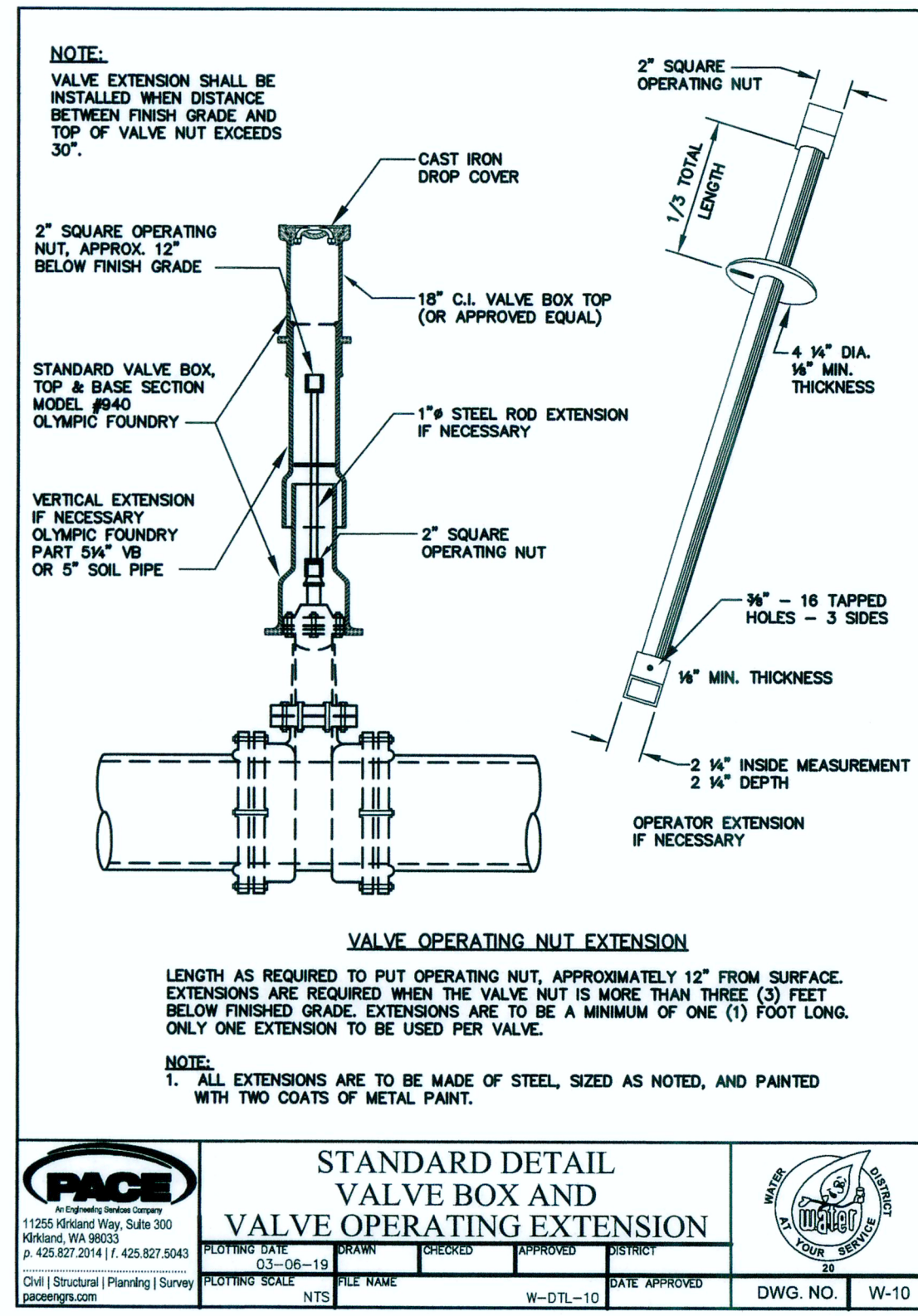
kpff
1601 5th Avenue, Suite 1600
Seattle, WA 98101
206.622.5822
www.kpff.com



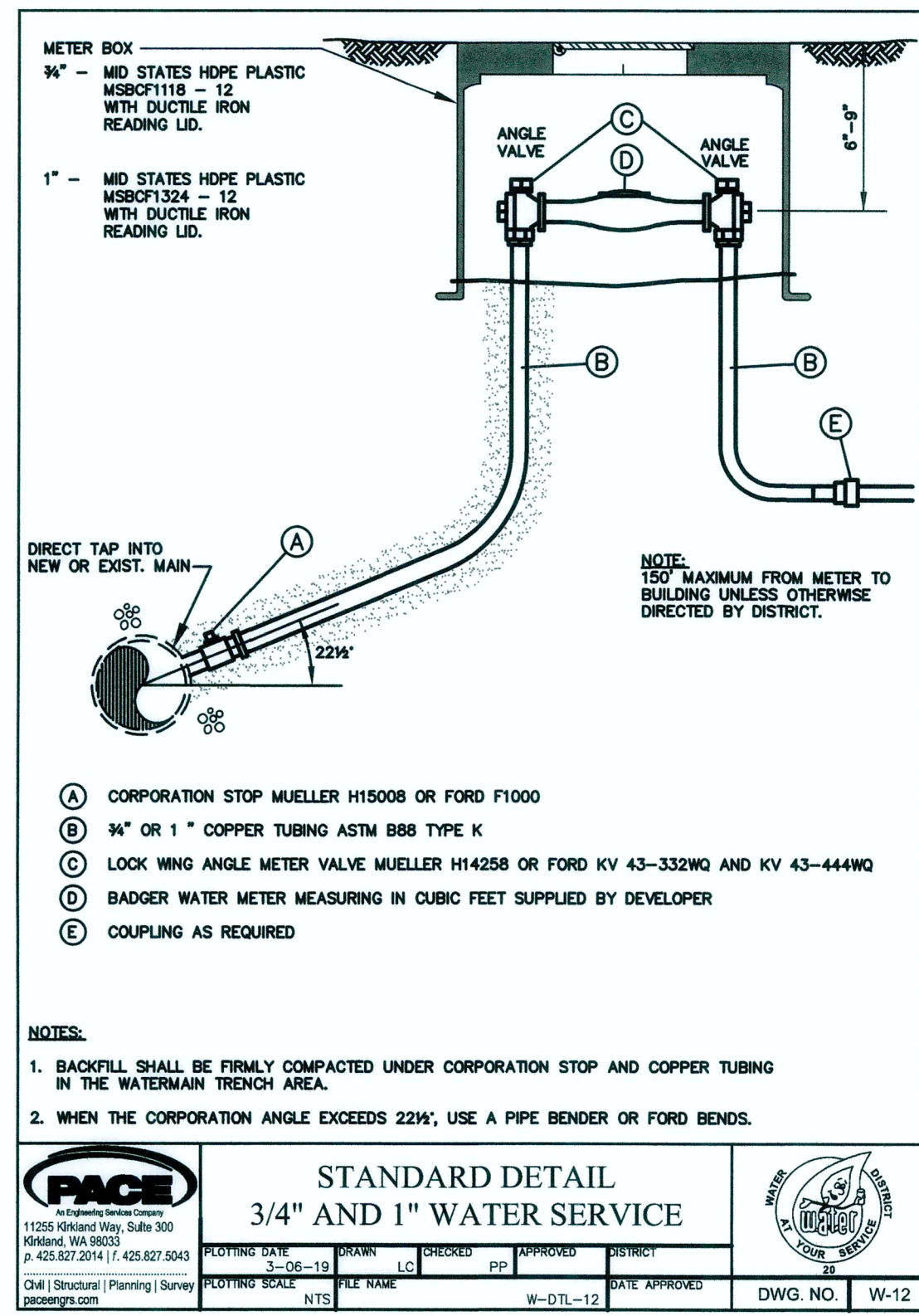
KING COUNTY WATER DISTRICT NO. 20
WATER MAIN EXTENSION

Greenbridge
SCALE: HORIZ: DES. F.L.D. BK. NO. PG. VERT: CST. F.L.D. BK. NO. PG. JOB NO. 1600206

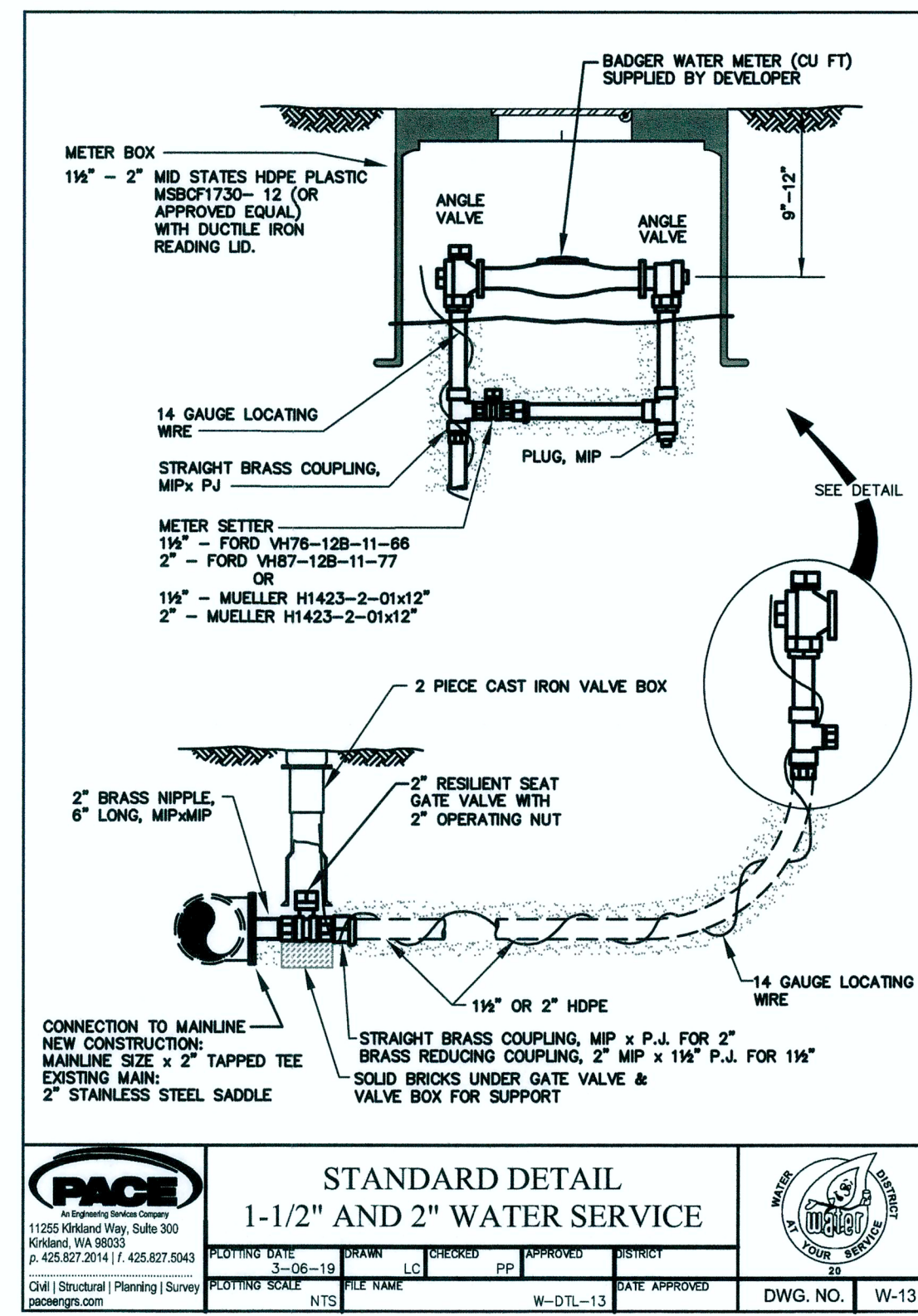
KING COUNTY HOUSING AUTHORITY
WHITE CENTER, WASHINGTON
GREENBRIDGE DIVISION 8
STANDARD DETAILS
BASE MAP SHEET 15 OF 16 DRAWING **W-13**



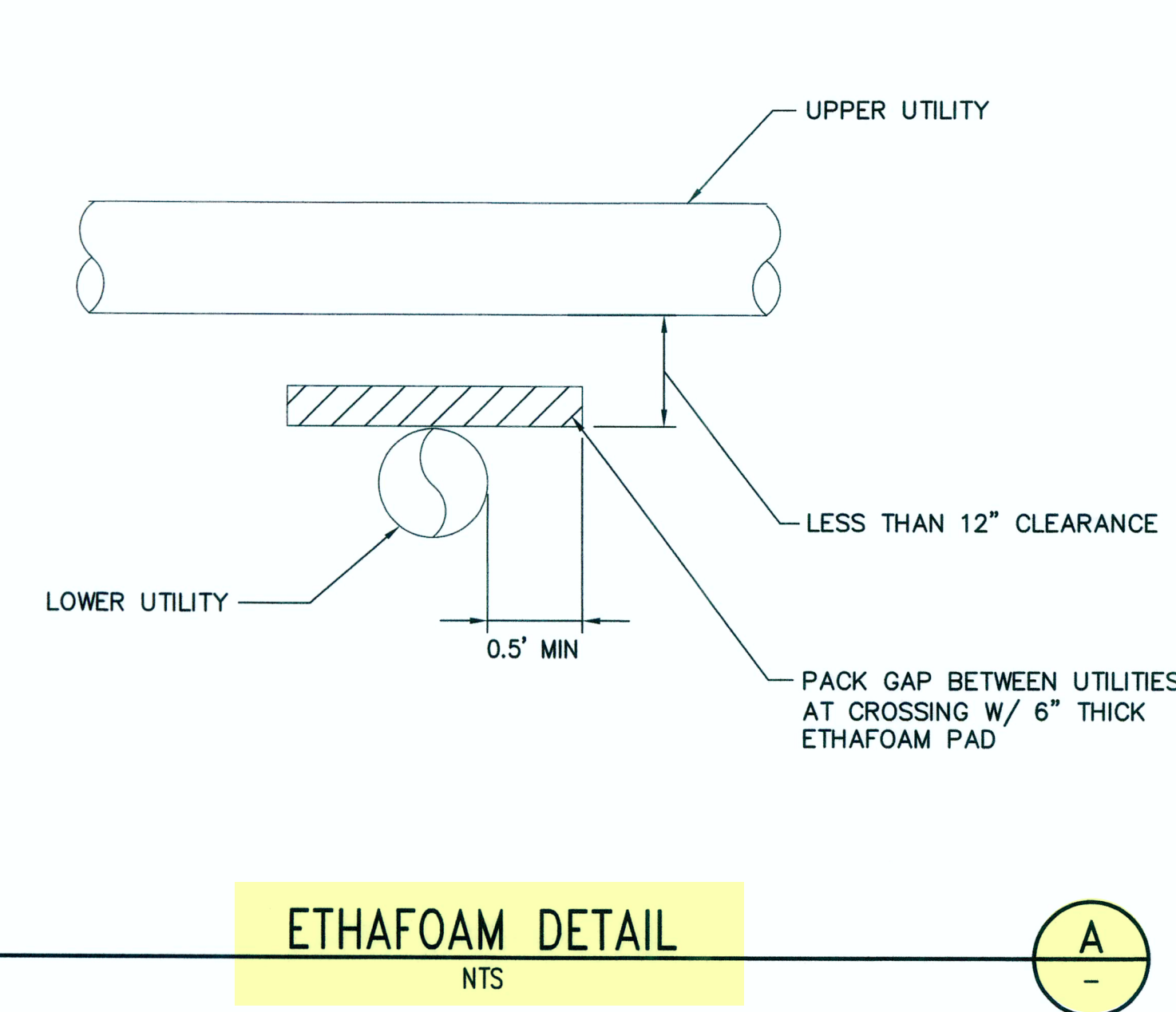
VALVE BOX AND VALVE OPERATING EXTENSION
NTS (10)



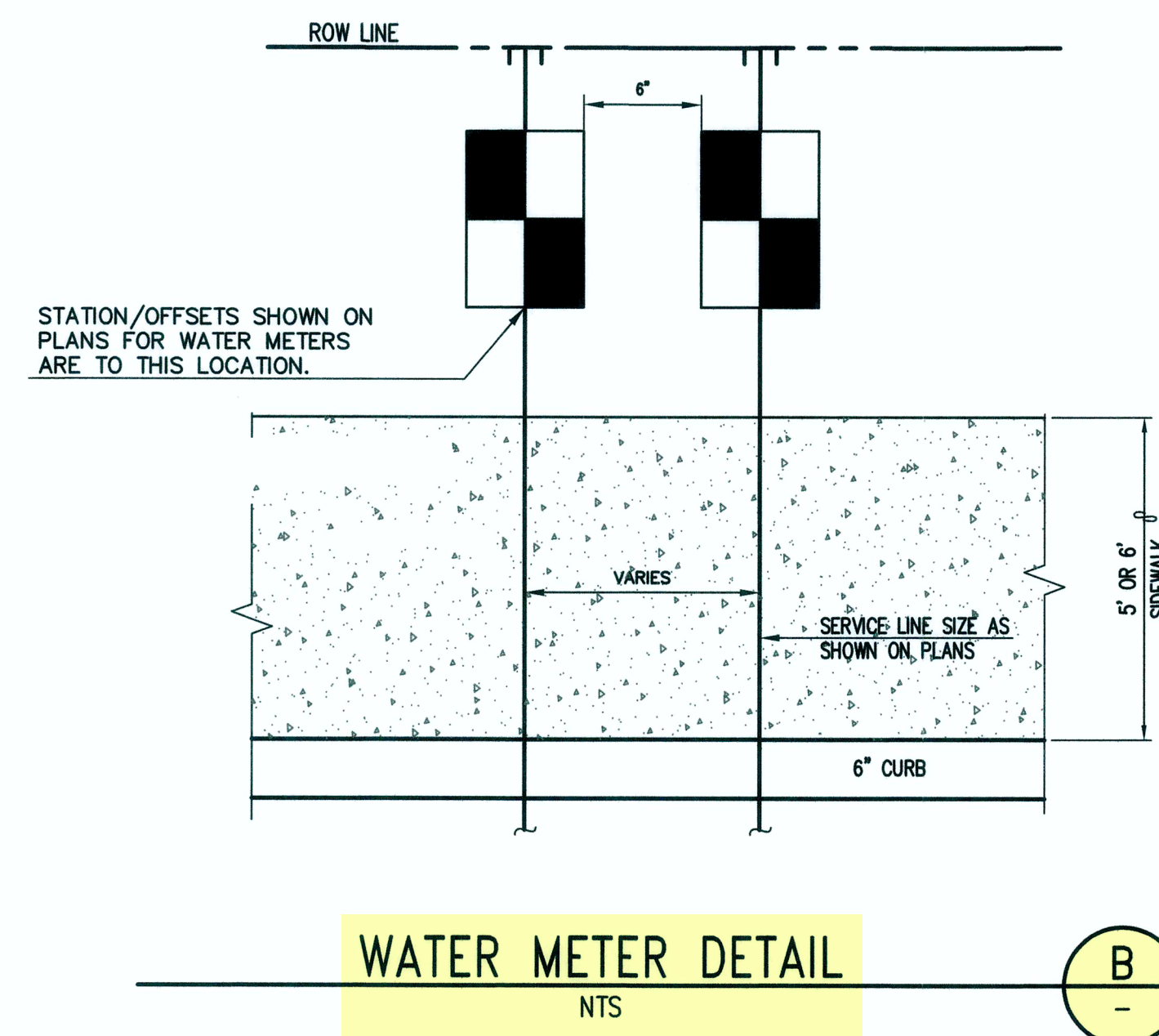
3/4" AND 1" WATER SERVICE
NTS (11)



1-1/2" AND 2" WATER SERVICE
NTS (12)



ETHAFOAM DETAIL
NTS (A)



WATER METER DETAIL
NTS (B)

RECORD DRAWINGS

THESE AS-BUILT DOCUMENTS HAVE BEEN PREPARED FROM THE CONTRACTOR'S REDLINED MARK-UPS OF THE CONSTRUCTION DOCUMENTS. THE ENGINEER REVIEWING THESE RECORD DRAWINGS HAS NOT WITNESSED ALL OF THE ELEMENTS OF CONSTRUCTION AND IS NOT RESPONSIBLE FOR ERRORS OR OMISSIONS IN DATA OR CERTIFY THE ACCURACY OF THE INFORMATION PROVIDED BY THE CONTRACTOR'S AS-BUILT REDLINES.

811 Call 811
two business days
before you dig

Water District 20
KING COUNTY

APPROVED CONSTRUCTION DRAWINGS: *Michael D. [Signature]* DATE: 3/5/20

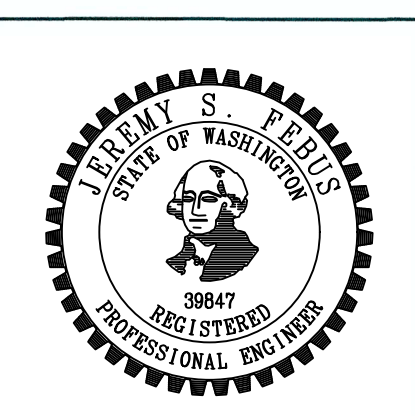
DEA #25270.5

Z:\1600001-1600006 (Greenbridge)\CAD\Design\102-Design Development\W-14-GB-W-14-12-DTL-14.dwg

NO.	BY	DATE	DESCRIPTION
3		09/13/21	FINAL CORRECTED PLANS - PHASE 1
2		02/27/20	REVISED PER KOM#20 COMMENTS
1		02/05/20	ORIGINAL SUBMITTAL

kpff

1601 5th Avenue, Suite 1600
Seattle, WA 98101
206.622.5822
www.kpff.com



KING COUNTY WATER DISTRICT NO. 20

WATER MAIN EXTENSION

Greenbridge

SCALE: HORIZ: DES. F.L.D. BK. NO. PG. VERT: CST. F.L.D. BK. NO. PG.

DATE APPROVED	MAV
PRINCIPAL APPROVAL	MAV
DESIGN	BJB
DRAWN	BJB
CHECKED	JCG
JOB NO.	1600206

KING COUNTY HOUSING AUTHORITY
WHITE CENTER, WASHINGTON

GREENBRIDGE DIVISION 8

STANDARD DETAILS

BASE MAP SHEET 16 OF 16 DRAWING **W-14**